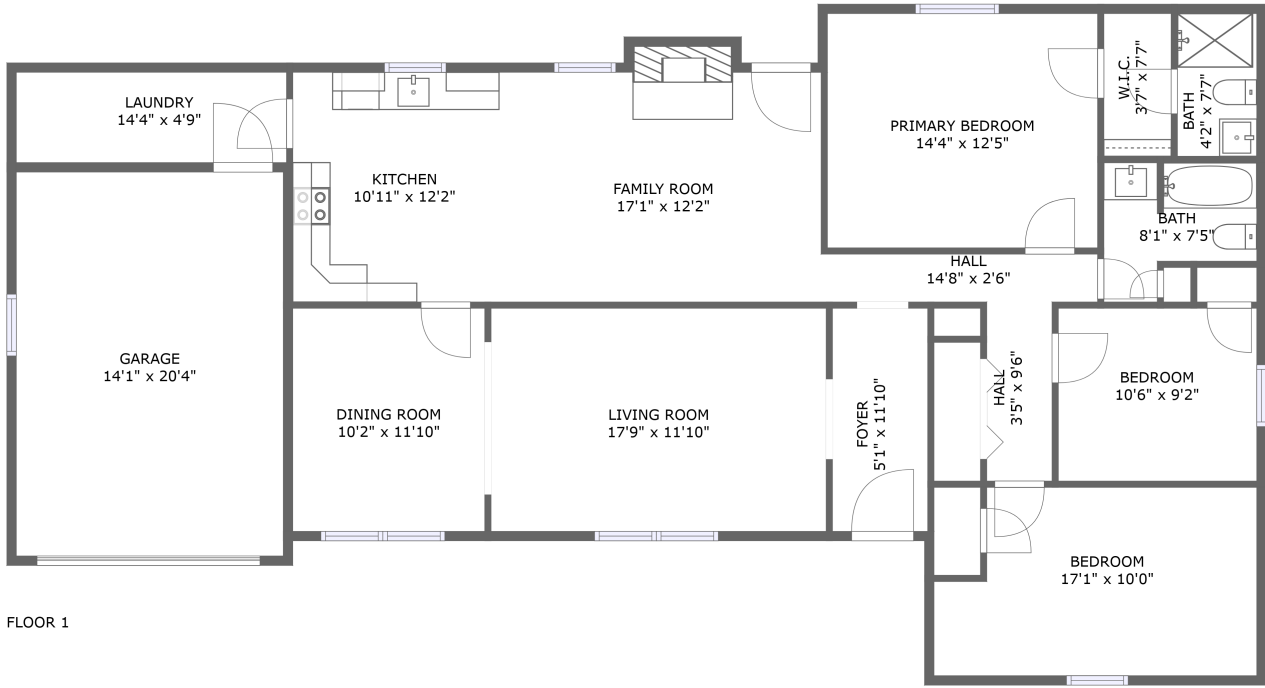



# 200 Greenbriar Circle North, Daphne, Baldwin County, Alabama, United States, 36526



## Property summary


 **1** Garages

 **3** Bedrooms

 **2** Bathrooms

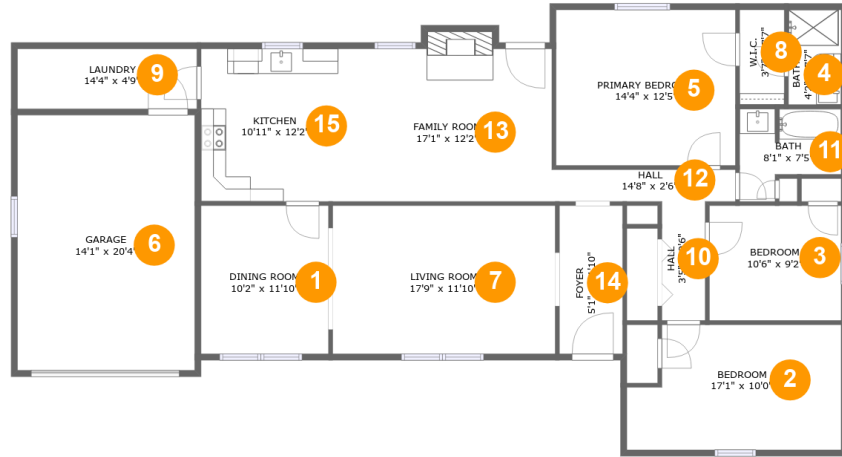
 **0** Half baths

 **1** Floors

 **1,614** Gross living area sqft

 **1,929** Total sqft

# 200 Greenbriar Circle North, Daphne, Baldwin County, Alabama, United States, 36526



## Room dimensions

Floor 1

Total sqft: 1929 Living area: 1614

#		Dimensions	sqft	Counted as living area
1	Dining Room	10'2" x 11'10"	120 sq. ft	Yes
2	Bedroom	17'1" x 10'0"	157 sq. ft	Yes
3	Bedroom	10'6" x 9'2"	96 sq. ft	Yes
4	Bath	4'2" x 7'7"	32 sq. ft	Yes
5	Bedroom	14'4" x 12'5"	177 sq. ft	Yes
6	Garage	14'1" x 20'4"	287 sq. ft	No
7	Living Room	17'9" x 11'10"	210 sq. ft	Yes
8	Cl	3'7" x 7'7"	27 sq. ft	Yes
9	Utility	14'4" x 4'9"	68 sq. ft	Yes
10	Hall	3'5" x 9'6"	33 sq. ft	Yes
11	Bath	8'1" x 7'5"	47 sq. ft	Yes

Scan captured on Thu, 19 Dec 2024 18:27:51 GMT

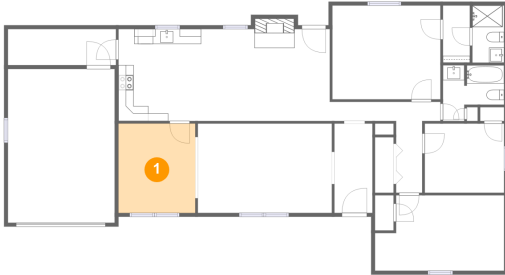
Information is calculated by Cubicasa technology deemed highly reliable but not guaranteed.

**200 Greenbriar Circle North, Daphne, Baldwin County,  
Alabama, United States, 36526**

#		Dimensions	sqft	Counted as living area
12	Hall	14'8" x 2'6"	37 sq. ft	Yes
13	Living Room	17'1" x 12'2"	215 sq. ft	Yes
14	Entry	5'1" x 11'10"	60 sq. ft	Yes
15	Kitchen	10'11" x 12'2"	133 sq. ft	Yes

# 200 Greenbriar Circle North, Daphne, Baldwin County, Alabama, United States, 36526

## 1 Floor 1 - Dining Room



Dimensions: 10'2" x 11'10"  
Area: 120 sq. ft  
Counted as living area: Yes

Heated: Yes  
Finished: Yes  
Enclosed: Yes  
Contiguous: Yes  
Permitted: Yes  
Wet space: No  
Addition: No  
Conversion: No

## 2 Floor 1 - Bedroom



Dimensions: 17'1" x 10'0"  
Area: 157 sq. ft  
Counted as living area: Yes

Heated: Yes  
Finished: Yes  
Enclosed: Yes  
Contiguous: Yes  
Permitted: Yes  
Wet space: No  
Addition: No  
Conversion: No

# 200 Greenbriar Circle North, Daphne, Baldwin County, Alabama, United States, 36526

## 3 Floor 1 - Bedroom



Dimensions: 10'6" x 9'2"  
Area: 96 sq. ft  
Counted as living area: Yes

Heated: Yes  
Finished: Yes  
Enclosed: Yes  
Contiguous: Yes  
Permitted: Yes  
Wet space: No  
Addition: No  
Conversion: No

## 4 Floor 1 - Bath



Dimensions: 4'2" x 7'7"  
Area: 32 sq. ft  
Counted as living area: Yes

Heated: Yes  
Finished: Yes  
Enclosed: Yes  
Contiguous: Yes  
Permitted: Yes  
Wet space: Yes  
Addition: No  
Conversion: No

## 5 Floor 1 - Bedroom



Dimensions: 14'4" x 12'5"  
Area: 177 sq. ft  
Counted as living area: Yes

Heated: Yes  
Finished: Yes  
Enclosed: Yes  
Contiguous: Yes  
Permitted: Yes  
Wet space: No  
Addition: No  
Conversion: No

# 200 Greenbriar Circle North, Daphne, Baldwin County, Alabama, United States, 36526

## 6 Floor 1 - Garage



Dimensions: 14'1" x 20'4"  
Area: 287 sq. ft  
Counted as living area: No

Heated: No  
Finished: No  
Enclosed: Yes  
Contiguous: Yes  
Permitted: Yes  
Wet space: No  
Addition: No  
Conversion: No

## 7 Floor 1 - Living Room



Dimensions: 17'9" x 11'10"  
Area: 210 sq. ft  
Counted as living area: Yes

Heated: Yes  
Finished: Yes  
Enclosed: Yes  
Contiguous: Yes  
Permitted: Yes  
Wet space: No  
Addition: No  
Conversion: No

## 8 Floor 1 - Cl



Dimensions: 3'7" x 7'7"  
Area: 27 sq. ft  
Counted as living area: Yes

Heated: Yes  
Finished: Yes  
Enclosed: Yes  
Contiguous: Yes  
Permitted: Yes  
Wet space: No  
Addition: No  
Conversion: No

# 200 Greenbriar Circle North, Daphne, Baldwin County, Alabama, United States, 36526

## 9 Floor 1 - Utility



Dimensions: 14'4" x 4'9"  
Area: 68 sq. ft  
Counted as living area: Yes

Heated: Yes  
Finished: Yes  
Enclosed: Yes  
Contiguous: Yes  
Permitted: Yes  
Wet space: No  
Addition: No  
Conversion: No

## 10 Floor 1 - Hall



Dimensions: 3'5" x 9'6"  
Area: 33 sq. ft  
Counted as living area: Yes

Heated: Yes  
Finished: Yes  
Enclosed: Yes  
Contiguous: Yes  
Permitted: Yes  
Wet space: No  
Addition: No  
Conversion: No

## 11 Floor 1 - Bath

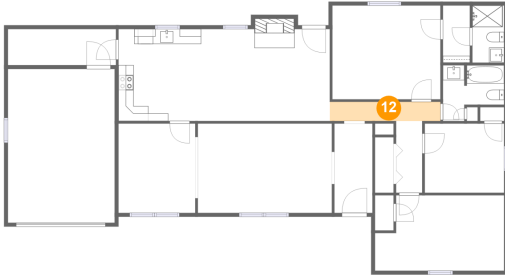


Dimensions: 8'1" x 7'5"  
Area: 47 sq. ft  
Counted as living area: Yes

Heated: Yes  
Finished: Yes  
Enclosed: Yes  
Contiguous: Yes  
Permitted: Yes  
Wet space: Yes  
Addition: No  
Conversion: No

# 200 Greenbriar Circle North, Daphne, Baldwin County, Alabama, United States, 36526

## 12 Floor 1 - Hall



Dimensions: 14'8" x 2'6"  
Area: 37 sq. ft  
Counted as living area: Yes

Heated: Yes  
Finished: Yes  
Enclosed: Yes  
Contiguous: Yes  
Permitted: Yes  
Wet space: No  
Addition: No  
Conversion: No

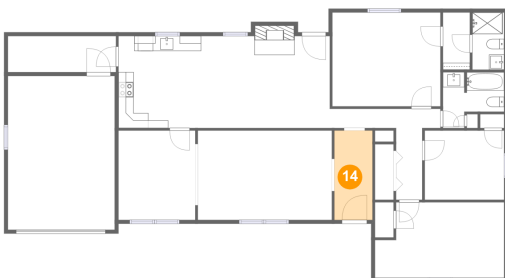
## 13 Floor 1 - Living Room



Dimensions: 17'1" x 12'2"  
Area: 215 sq. ft  
Counted as living area: Yes

Heated: Yes  
Finished: Yes  
Enclosed: Yes  
Contiguous: Yes  
Permitted: Yes  
Wet space: No  
Addition: No  
Conversion: No

## 14 Floor 1 - Entry



Dimensions: 5'1" x 11'10"  
Area: 60 sq. ft  
Counted as living area: Yes

Heated: Yes  
Finished: Yes  
Enclosed: Yes  
Contiguous: Yes  
Permitted: Yes  
Wet space: No  
Addition: No  
Conversion: No



**200 Greenbriar Circle North, Daphne, Baldwin County,  
Alabama, United States, 36526**

**15 Floor 1 - Kitchen**



**Dimensions:** 10'11" x 12'2"  
**Area:** 133 sq. ft  
**Counted as living area:** Yes

**Heated:** Yes  
**Finished:** Yes  
**Enclosed:** Yes  
**Contiguous:** Yes  
**Permitted:** Yes  
**Wet space:** No  
**Addition:** No  
**Conversion:** No