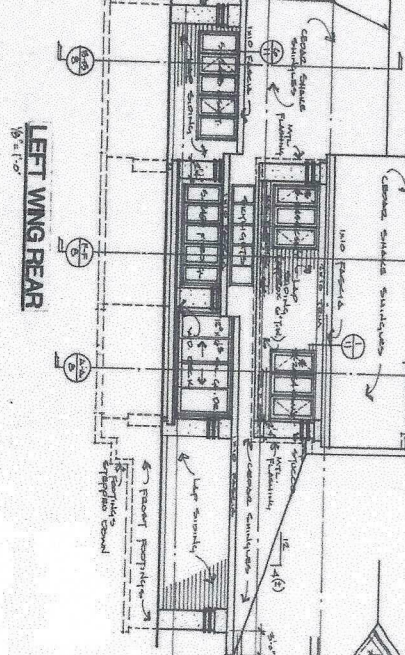
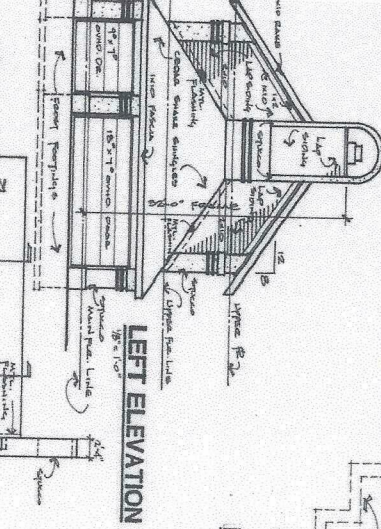


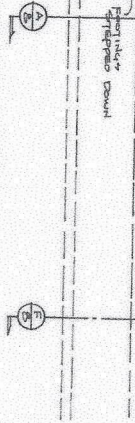
LEFT WING REAR
1/8" = 1'-0"



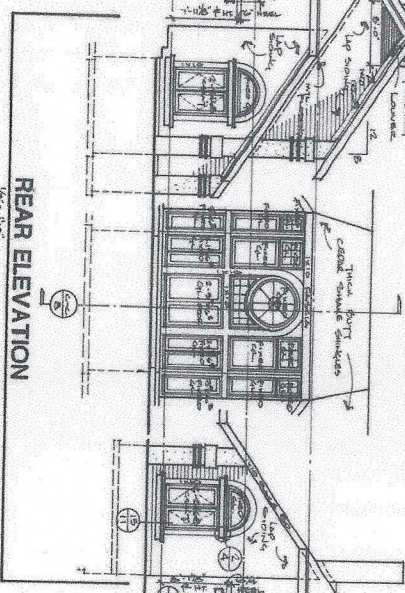
LEFT ELEVATION
1/8" = 1'-0"



LEFT WING FRONT
1/8" = 1'-0"

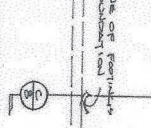


REAR ELEVATION
1/8" = 1'-0"

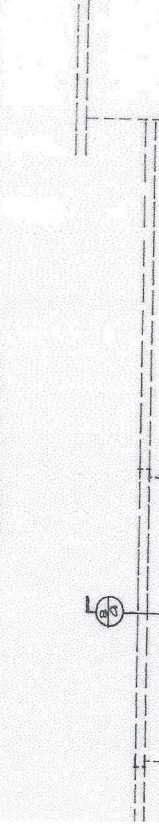


* EMERGENCY EGRESS
SEE LIST OF THE REAR EXIT ONLY WITH
RESERVATION FOR THE STAIR CASE

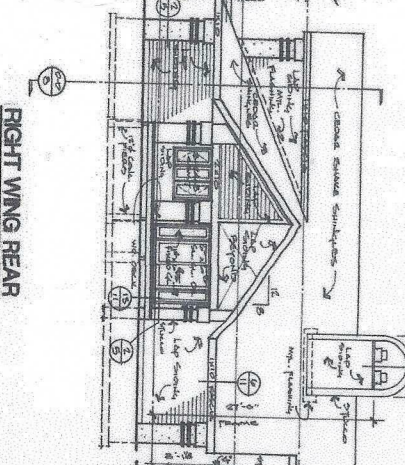
ENTRANCE
1/4" = 1'-0"



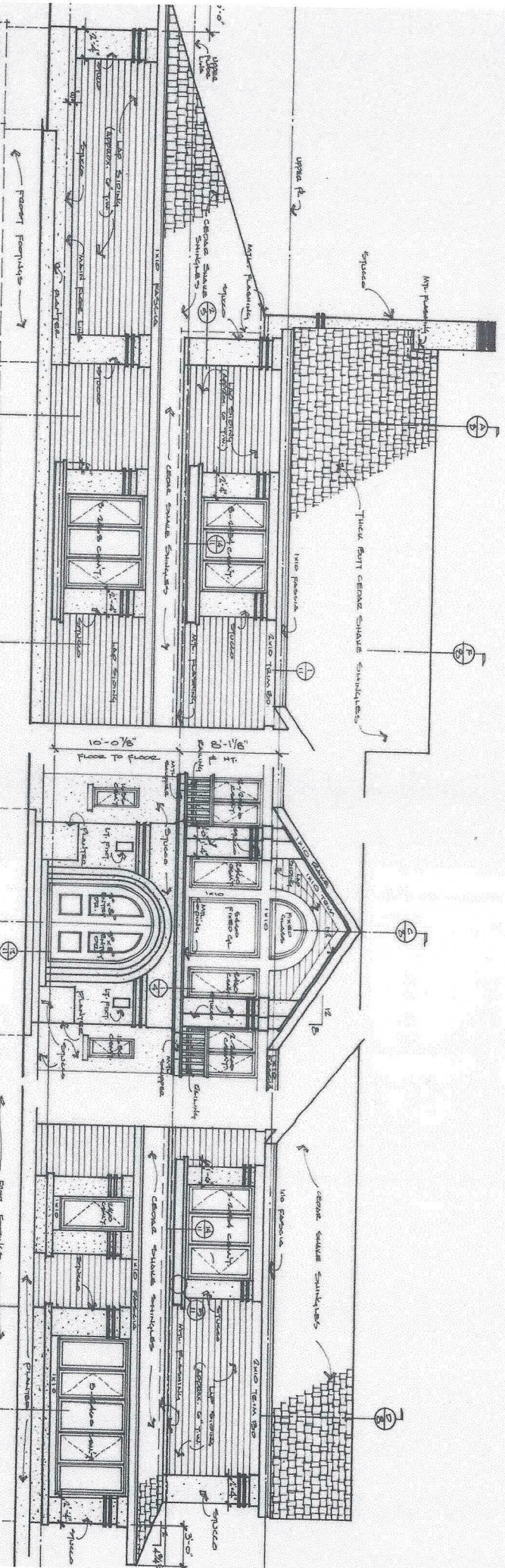
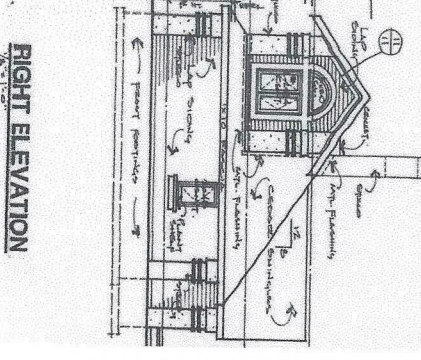
RIGHT WING FRONT
1/4" = 1'-0"

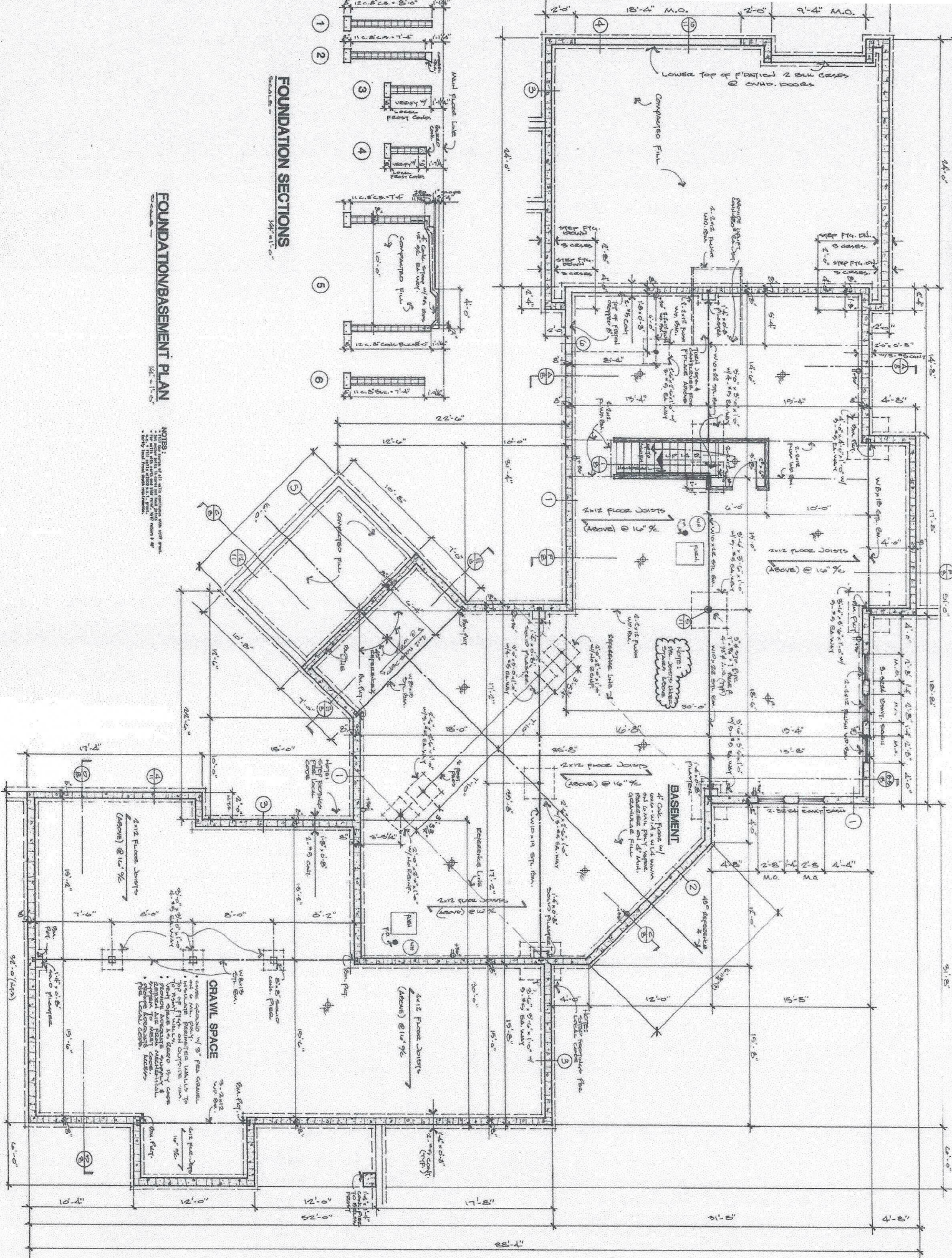


RIGHT WING REAR
1/8" = 1'-0"



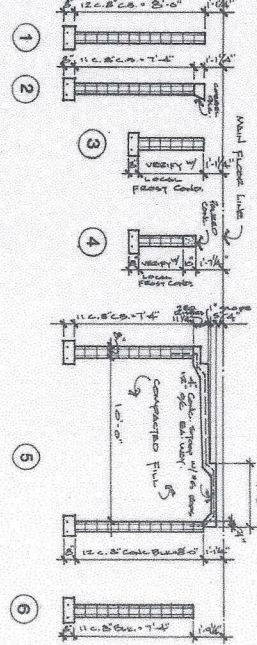
RIGHT ELEVATION
1/8" = 1'-0"





FOUNDATION SECTIONS

SCALE: 1/4" = 1'-0"

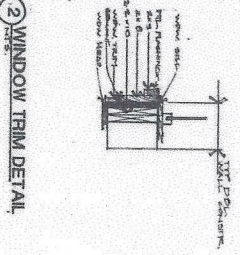
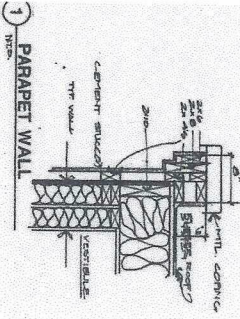


FOUNDATION/BASEMENT PLAN

SCALE: 1/4" = 1'-0"

NOTES:
 1. ALL FOUNDATION WALLS SHALL BE CONCRETE ON GRADE.
 2. ALL FOUNDATION WALLS SHALL BE FINISHED WITH 1/2" GYPSUM BOARD.
 3. ALL FOUNDATION WALLS SHALL BE PAINTED WITH RED LEAD PAINT.
 4. ALL FOUNDATION WALLS SHALL BE PROTECTED WITH 2" POLYSTYRENE INSULATION.
 5. ALL FOUNDATION WALLS SHALL BE PROTECTED WITH 1/2" GYPSUM BOARD.
 6. ALL FOUNDATION WALLS SHALL BE PROTECTED WITH 1/2" GYPSUM BOARD.
 7. ALL FOUNDATION WALLS SHALL BE PROTECTED WITH 1/2" GYPSUM BOARD.
 8. ALL FOUNDATION WALLS SHALL BE PROTECTED WITH 1/2" GYPSUM BOARD.
 9. ALL FOUNDATION WALLS SHALL BE PROTECTED WITH 1/2" GYPSUM BOARD.
 10. ALL FOUNDATION WALLS SHALL BE PROTECTED WITH 1/2" GYPSUM BOARD.

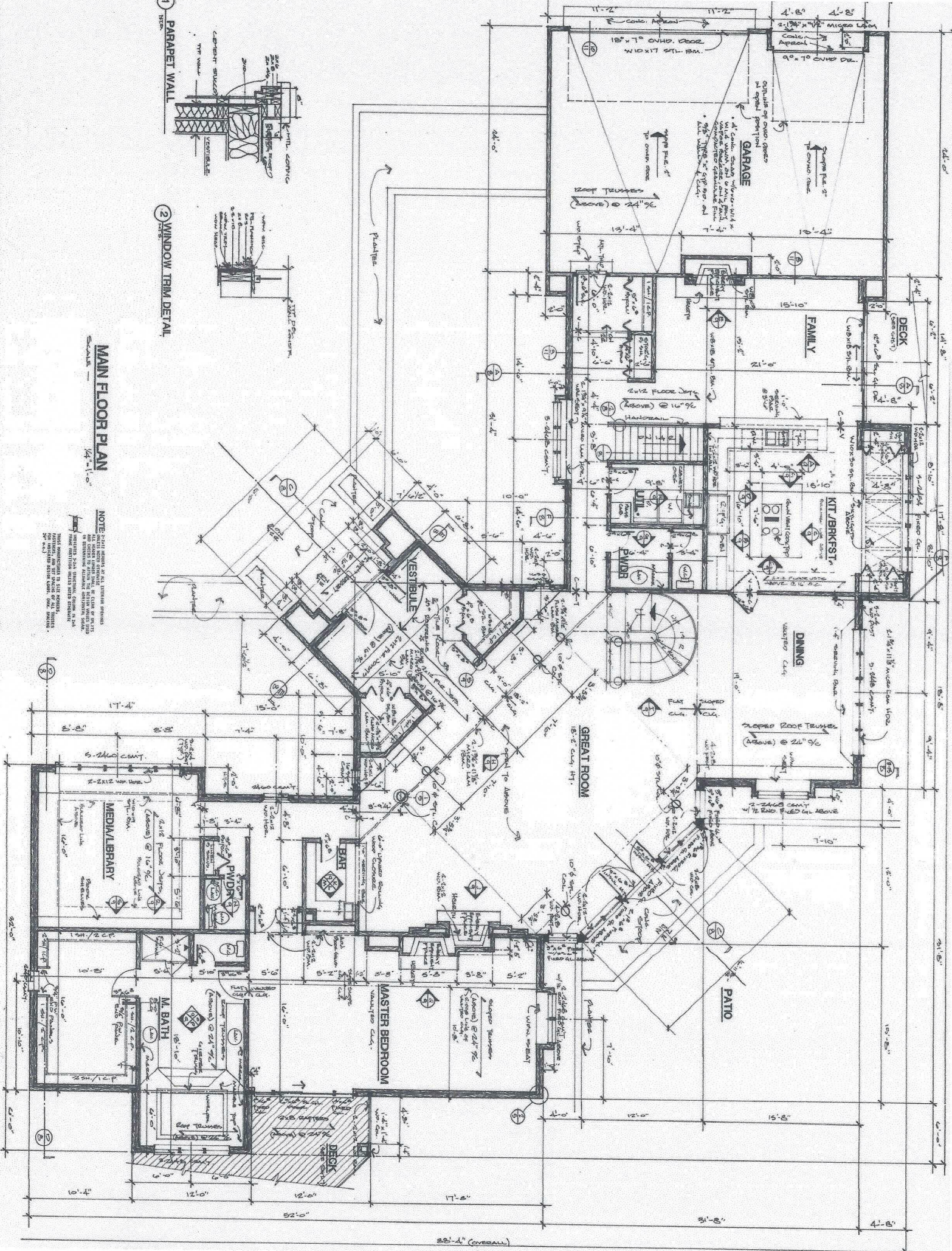
CRAWL SPACE
 1. CRAWL SPACE SHALL BE 3' HIGH.
 2. CRAWL SPACE SHALL BE FINISHED WITH 1/2" GYPSUM BOARD.
 3. CRAWL SPACE SHALL BE PROTECTED WITH 2" POLYSTYRENE INSULATION.
 4. CRAWL SPACE SHALL BE PROTECTED WITH 1/2" GYPSUM BOARD.
 5. CRAWL SPACE SHALL BE PROTECTED WITH 1/2" GYPSUM BOARD.
 6. CRAWL SPACE SHALL BE PROTECTED WITH 1/2" GYPSUM BOARD.
 7. CRAWL SPACE SHALL BE PROTECTED WITH 1/2" GYPSUM BOARD.
 8. CRAWL SPACE SHALL BE PROTECTED WITH 1/2" GYPSUM BOARD.
 9. CRAWL SPACE SHALL BE PROTECTED WITH 1/2" GYPSUM BOARD.
 10. CRAWL SPACE SHALL BE PROTECTED WITH 1/2" GYPSUM BOARD.



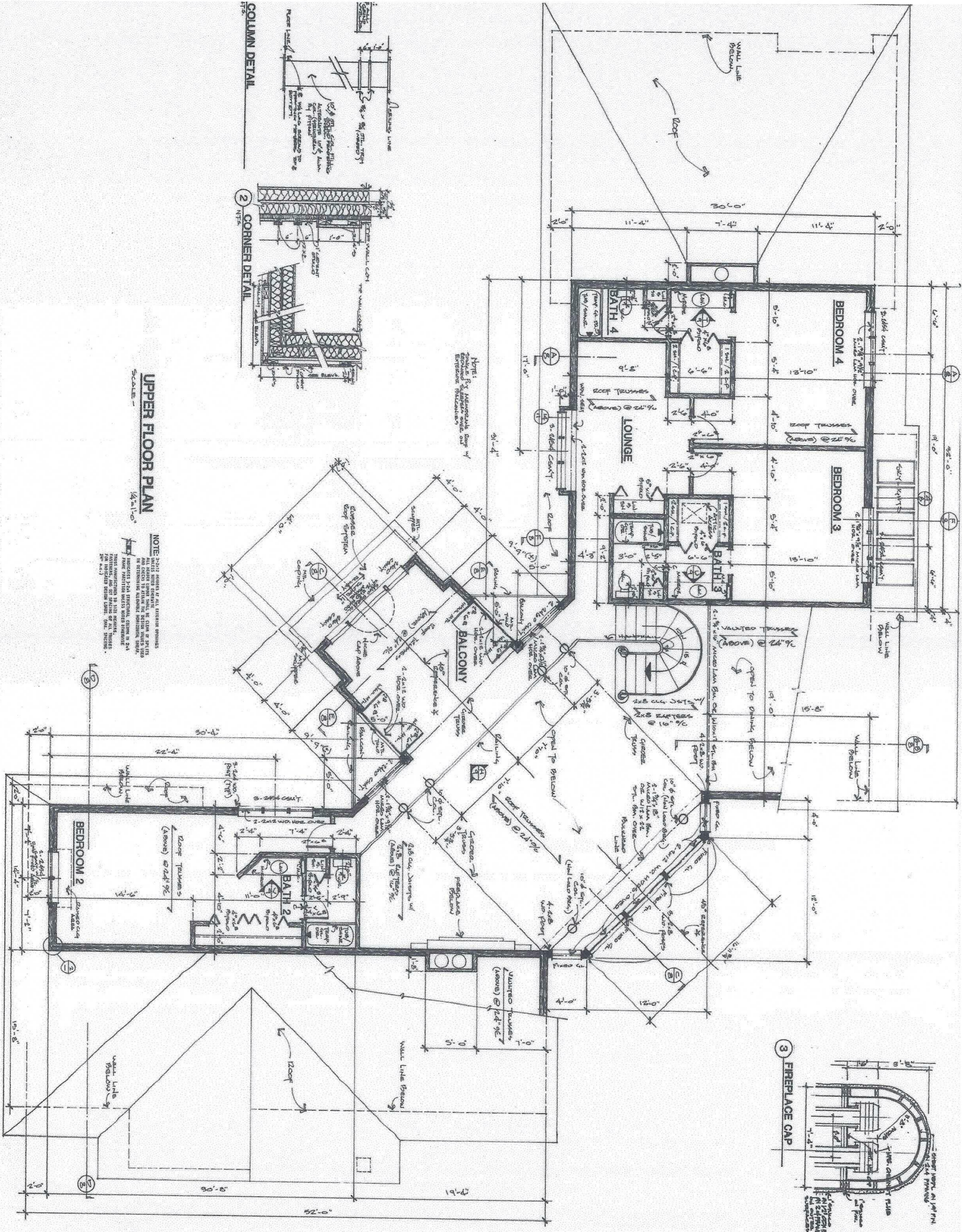
MAIN FLOOR PLAN

SCALE: 1/4" = 1'-0"

NOTE: VERIFY ALL SYSTEMS PERMITS AND CHECKS TO MEET THE DESIGN AND ALL APPLICABLE LOCAL, STATE, AND FEDERAL REQUIREMENTS. ALL DIMENSIONS ARE TO FACE UNLESS OTHERWISE NOTED. ALL FINISHES ARE TO BE DETERMINED BY THE ARCHITECT AND SHALL BE SHOWN ON THE FINISH SCHEDULE.



88'-4" (OVERALL)

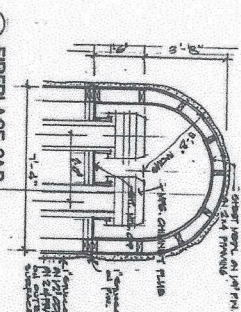


UPPER FLOOR PLAN
 SCALE: 1/4" = 1'-0"

NOTE: 2012 IBC CODES IN ALL OTHER AREAS.
 ALL DIMENSIONS FROM FINISH TO FINISH UNLESS NOTED OTHERWISE.
 ALL DIMENSIONS FROM FINISH TO FINISH UNLESS NOTED OTHERWISE.
 ALL DIMENSIONS FROM FINISH TO FINISH UNLESS NOTED OTHERWISE.
 ALL DIMENSIONS FROM FINISH TO FINISH UNLESS NOTED OTHERWISE.
 ALL DIMENSIONS FROM FINISH TO FINISH UNLESS NOTED OTHERWISE.

1 COLUMN DETAIL
 REINFORCED CONCRETE COLUMN WITH BRASS LINE
 12" DIA. REINFORCED CONCRETE COLUMN WITH BRASS LINE
 12" DIA. REINFORCED CONCRETE COLUMN WITH BRASS LINE
 12" DIA. REINFORCED CONCRETE COLUMN WITH BRASS LINE

2 CORNER DETAIL
 REINFORCED CONCRETE CORNER WITH BRASS LINE
 REINFORCED CONCRETE CORNER WITH BRASS LINE
 REINFORCED CONCRETE CORNER WITH BRASS LINE
 REINFORCED CONCRETE CORNER WITH BRASS LINE



3 FIREPLACE CAP