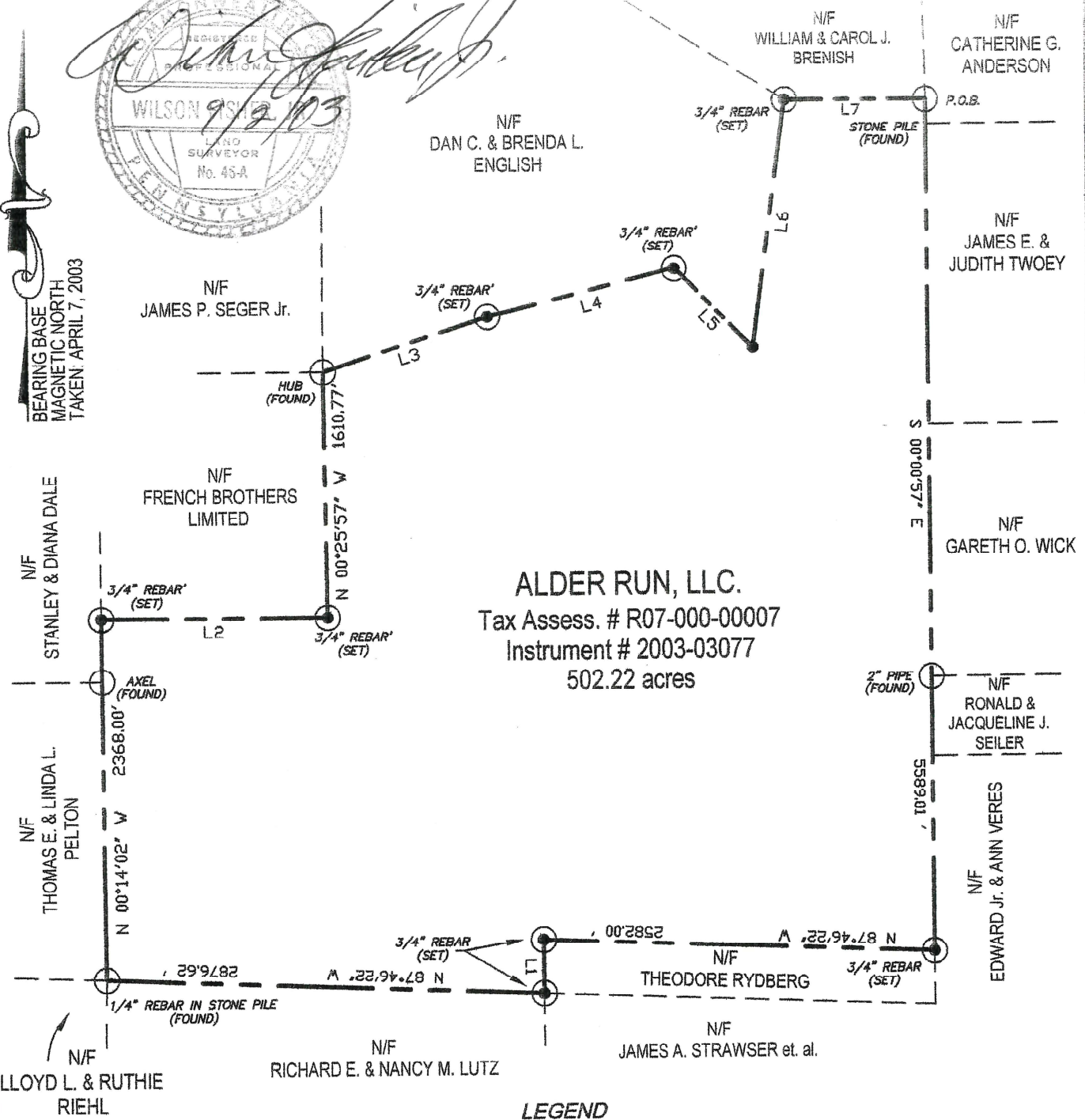


*Wilson*  
 WILSON 9/2/03  
 REGISTERED PROFESSIONAL ENGINEER  
 LAND SURVEYOR  
 No. 46-A

BEARING BASE  
 MAGNETIC NORTH  
 TAKEN APRIL 7, 2003



**ALDER RUN, LLC.**  
 Tax Assess. # R07-000-00007  
 Instrument # 2003-03077  
 502.22 acres

**BEARING TABLE:**

NUMBER	DIRECTION	DISTANCE
L1	S 00°00'57" E	350.00'
L2	S 89°59'02" E	1487.00'
L3	N 72°00'59" E	1142.52'
L4	N 75°58'35" E	1272.00'
L5	S 44°16'02" E	736.61'
L6	N 07°45'58" E	1635.00'
L7	S 89°41'53" E	931.80'

**LEGEND**

- — — — — SURVEYED PROPERTY LINES
- — — — — ADJOINING PROPERTY LINES
- ⊙ 3/4" REBAR (SET)
- EXISTING MONUMENT
- BEGINNING OR END OF A LINE SEGMENT
- N/F NOW OR FORMERLY
- P.O.B. POINT OF BEGINNING

DRAWN BY: RL	FILE NO.:
CHECKED BY: WF	JOB NO.:
DATE: 8/18/03	FB NO.:
SCALE: 1"=1000'	REVISION
BY	
cadservers/neilson2/neil2.dwg	

PLAT OF LAND OF  
 ALDER RUN, LLC.  
 GRAHAM TOWNSHIP, CLEARFIELD COUNTY

**HESS & FISHER ENGINEERS, INC.**  
 CONSULTING ENGINEERS & GEOLOGISTS  
 36 NORTH SECOND STREET  
 CLEARFIELD, PENNSYLVANIA 16830 814-765-7541