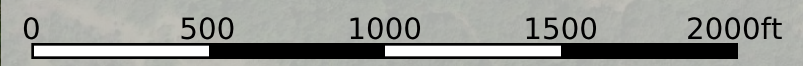
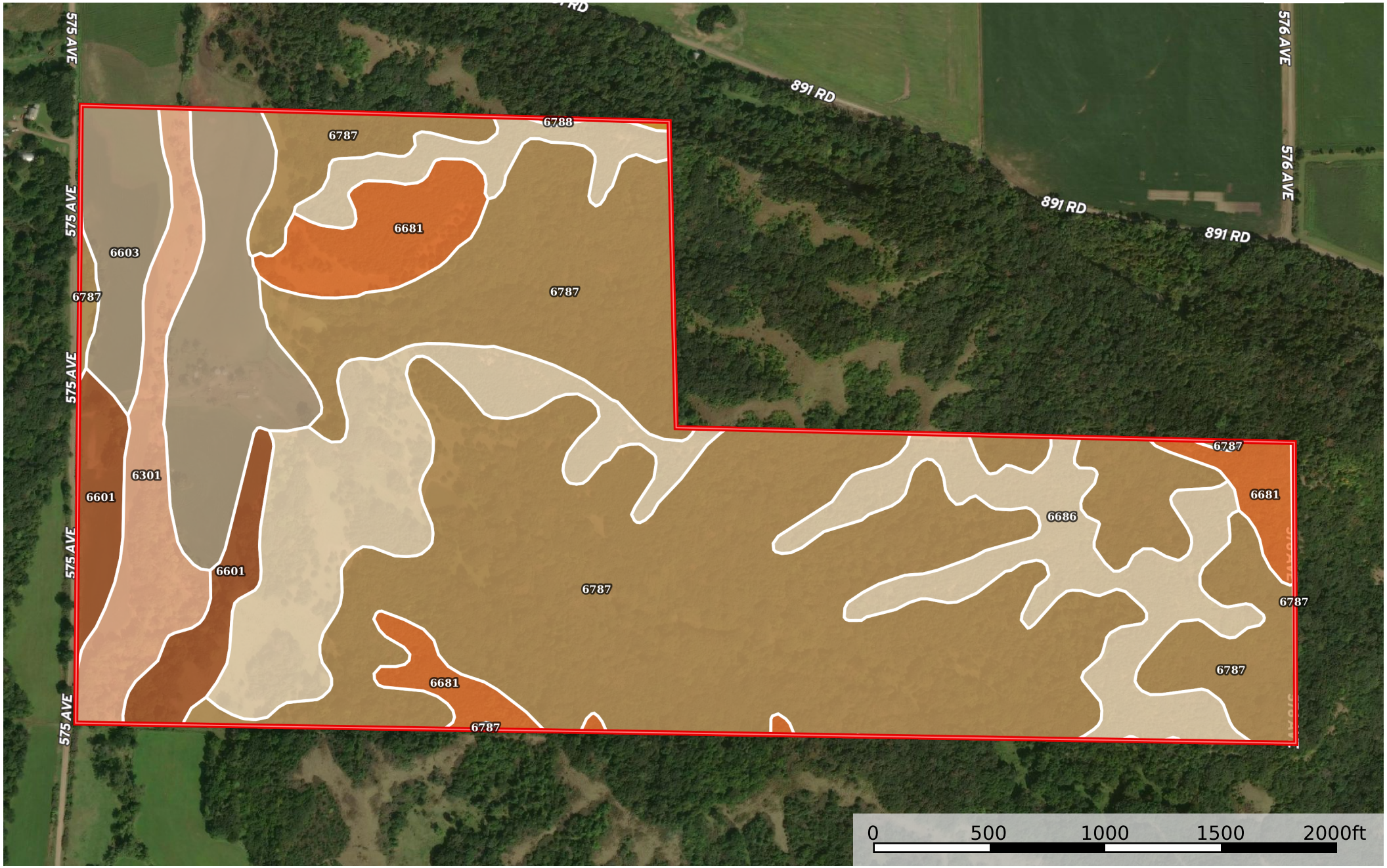


# 240+/- Acres Cedar Co, Nebraska

Nebraska, AC +/-



 Boundary

Boundary 236.39 ac

SOIL CODE	SOIL DESCRIPTION	ACRES	%	CPI	NCCPI	CAP
6787	Crofton-Alcester silt loams, 20 to 60 percent slopes	126.6 1	53.56	0	23	7e
6686	Crofton silt loam, 30 to 60 percent slopes	47.81	20.23	0	15	7e
6603	Alcester silty clay loam, 2 to 6 percent slopes	24.48	10.36	91	76	2e
6681	Crofton silt loam, 17 to 30 percent slopes, eroded	14.68	6.21	0	37	6e
6301	Aowa silt loam, channeled, 0 to 3 percent slopes, frequently flooded	12.5	5.29	0	54	6w
6601	Alcester silty clay loam, 6 to 11 percent slopes	10.08	4.26	0	74	3e
6788	Crofton-Gavins silt loams, 30 to 60 percent slopes	0.23	0.1	0	10	7e
TOTALS		236.3 9(*)	100%	9.42	31.54	6.2

(\*) Total acres may differ in the second decimal compared to the sum of each acreage soil. This is due to a round error because we only show the acres of each soil with two decimal.

### Capability Legend

Increased Limitations and Hazards

Decreased Adaptability and Freedom of Choice Users

Land, Capability

	1	2	3	4	5	6	7	8
'Wild Life'	•	•	•	•	•	•	•	•
Forestry	•	•	•	•	•	•	•	
Limited	•	•	•	•	•	•	•	
Moderate	•	•	•	•	•	•		
Intense	•	•	•	•	•			
Limited	•	•	•	•				
Moderate	•	•	•					
Intense	•	•						
Very Intense	•							

### Grazing Cultivation

(c) climatic limitations (e) susceptibility to erosion

(s) soil limitations within the rooting zone (w) excess of water