

Old Thomas Place Lot 10



\$70,000

Datiland Properties

Marie Farr-Lee Qualifying Broker

Home office: (575) 772-5168

Cell: (505) 239-3416

License # REC 2022-1255

Helga Baughn, Qualifying Broker

Home office: (575) 772-5512

Cell: (505) 209-0274

License # 19972

19 Zuni Trail

PO Box 69

Datil, NM 87821

www.datiland.com

The information was obtained from sources deemed reliable, but is not guaranteed.
Prospective Buyers should check all data to their own satisfaction.



Imagine owning a 20 acres where nature and opportunity converge! This expansive plot offers the best of rural country living and is located just 20 miles southwest of Datil, NM. Whether you're dreaming of building your own homestead, planning a retreat, or establishing a hunting getaway, this land has it all.

The wooded acreage, is partially fenced, and includes a cased well and a small camper in need of TLC. Imagine waking up to majestic views of the surrounding mountains right from your doorstep. The property is dotted with lush pinion pines and cedar, providing a sanctuary for a diverse array of wildlife, while also ensuring you enjoy the privacy you crave.

For the hunting enthusiast, this land is ideally located in the prestigious Hunting Unit 15, renowned for its trophy sized elk. With road frontage on two sides, accessibility is simplified, offering multiple options for entrance and development. The open meadow presents ample building sites, allowing you to design and construct a home or cabin that perfectly suits your vision.

With its generous terrain and versatile features, this 20-acre parcel is more than just a piece of land—it's a chance to cultivate the life you've always desired. Seize this rare opportunity to own a slice of countryside heaven where peace, privacy, and pristine nature harmoniously coexist. Whether you plan to build immediately or hold this opportunity for the future, this is a chance not to be missed. Act now, and make your rural living dreams a reality!

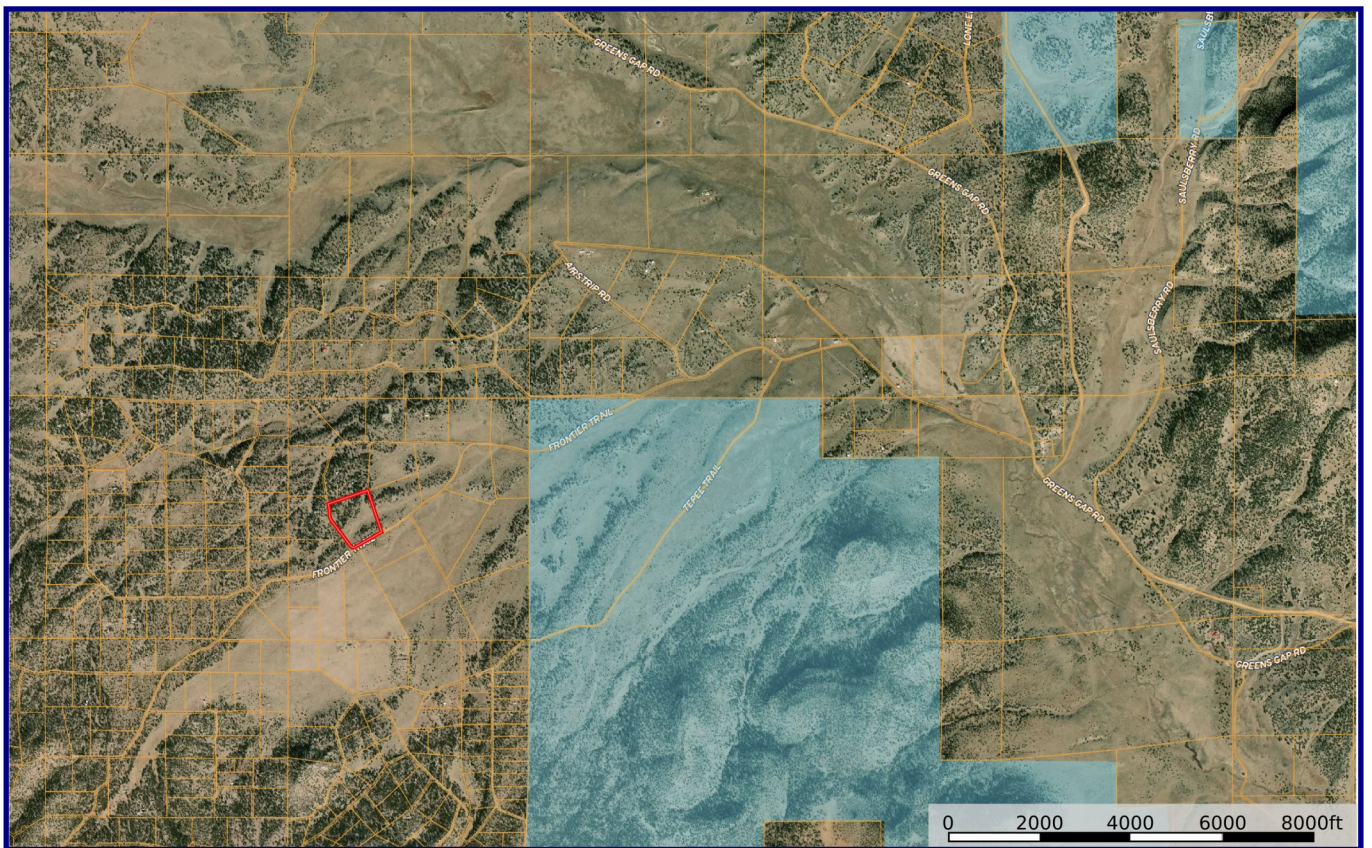
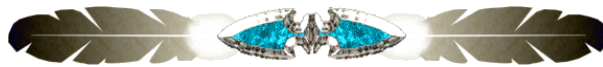
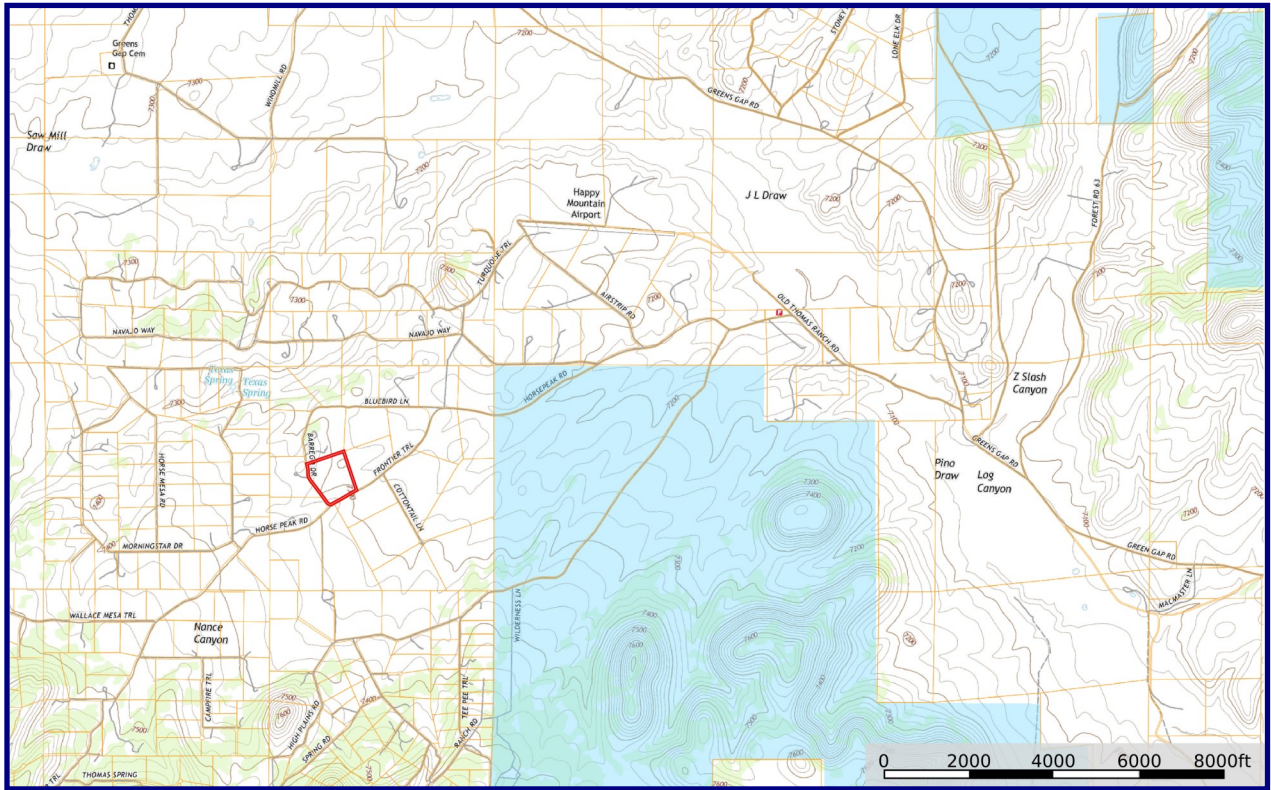
[original of property.mp4](#)

Click on the link for an aerial footage that shows a sweeping bird's-eye view of this 20-acre parcel.









The information was obtained from sources deemed reliable, but is not guaranteed by Datiland Properties. Prospective Buyers should check all data to their own satisfaction.