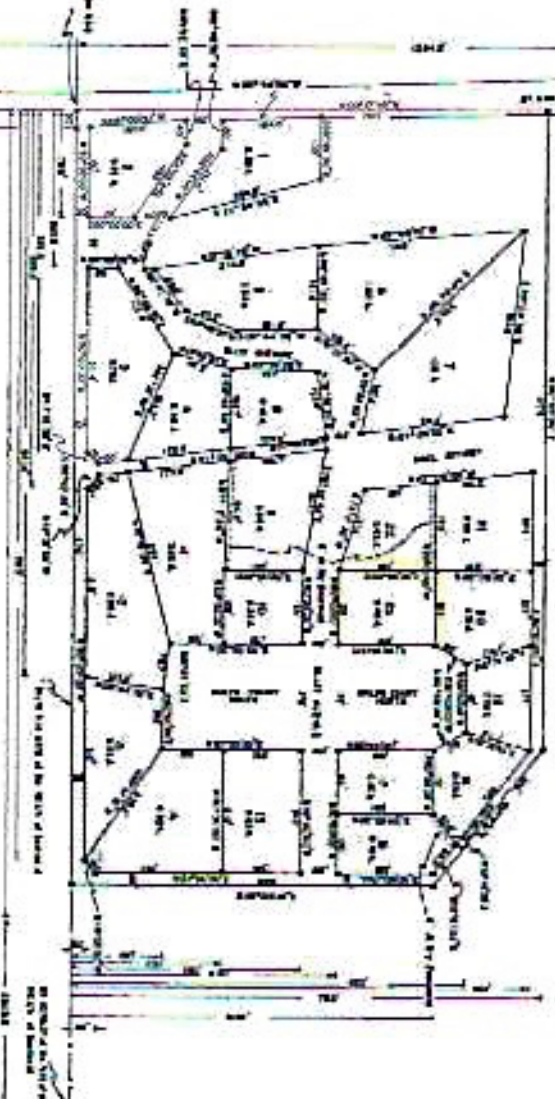


"SOUTH RIDGE"

A SUBDIVISION OF PART OF THE N1/2 OF THE NE1/4 OF SECTION 18, T1N, R34W OF THE 6TH PM, YUMA COUNTY, COLORADO
 WYRAV, COLORADO

STATE OF COLORADO
 COUNTY OF YUMA
 I, the undersigned, County Clerk of the County of Yuma, State of Colorado, do hereby certify that the foregoing is a true and correct copy of the original record of the subdivision of the land described in the foregoing plat, as the same appears in the records of the County Clerk of the County of Yuma, State of Colorado, and that the same has been duly recorded in the records of the County Clerk of the County of Yuma, State of Colorado, and that the same is a true and correct copy of the original record of the subdivision of the land described in the foregoing plat, as the same appears in the records of the County Clerk of the County of Yuma, State of Colorado, and that the same has been duly recorded in the records of the County Clerk of the County of Yuma, State of Colorado.



PLAT OF THE SUBDIVISION OF PART OF THE N1/2 OF THE NE1/4 OF SECTION 18, T1N, R34W OF THE 6TH PM, YUMA COUNTY, COLORADO, WYRAV, COLORADO.
 The land described in the foregoing plat is situated in the County of Yuma, State of Colorado, and is more particularly described as follows: To-wit: Part of the N1/2 of the NE1/4 of Section 18, T1N, R34W of the 6th PM, Yuma County, Colorado, containing 1.25 acres, more or less, as the same appears in the records of the County Clerk of the County of Yuma, State of Colorado, and that the same has been duly recorded in the records of the County Clerk of the County of Yuma, State of Colorado.

Frank E. Hager

APPROVED AND FORWARDED:
 COUNTY CLERK
 YUMA COUNTY, COLORADO

WITNESSED MY HAND AND SEAL OF OFFICE THIS 15th DAY OF MARCH, 1925.

APPROVED AND FORWARDED:
 COUNTY CLERK
 YUMA COUNTY, COLORADO

WITNESSED MY HAND AND SEAL OF OFFICE THIS 15th DAY OF MARCH, 1925.



Frank E. Hager

WYRAV, COLORADO
 The land described in the foregoing plat is situated in the County of Yuma, State of Colorado, and is more particularly described as follows: To-wit: Part of the N1/2 of the NE1/4 of Section 18, T1N, R34W of the 6th PM, Yuma County, Colorado, containing 1.25 acres, more or less, as the same appears in the records of the County Clerk of the County of Yuma, State of Colorado, and that the same has been duly recorded in the records of the County Clerk of the County of Yuma, State of Colorado.

ARIZON ENGINEERING SERVICES
 100 N. 1st St., Phoenix, Arizona
 Phone No. 11