

## Room Dimensions and Areas:

1. Living Room:

$$14'10'' \times 10'0'' \Rightarrow 14.833 \times 10 = 148.33 \text{ sq ft}$$

2. Kitchen:

$$15'3'' \times 7'8'' \Rightarrow 15.25 \times 7.667 = 116.97 \text{ sq ft}$$

3. Dining Area:

$$10'0'' \times 8'10'' \Rightarrow 10 \times 8.833 = 88.33 \text{ sq ft}$$

4. Bedroom:

$$9'8'' \times 9'8'' \Rightarrow 9.667 \times 9.667 = 93.47 \text{ sq ft}$$

5. Bath:

$$9'3'' \times 7'9'' \Rightarrow 9.25 \times 7.75 = 71.69 \text{ sq ft}$$

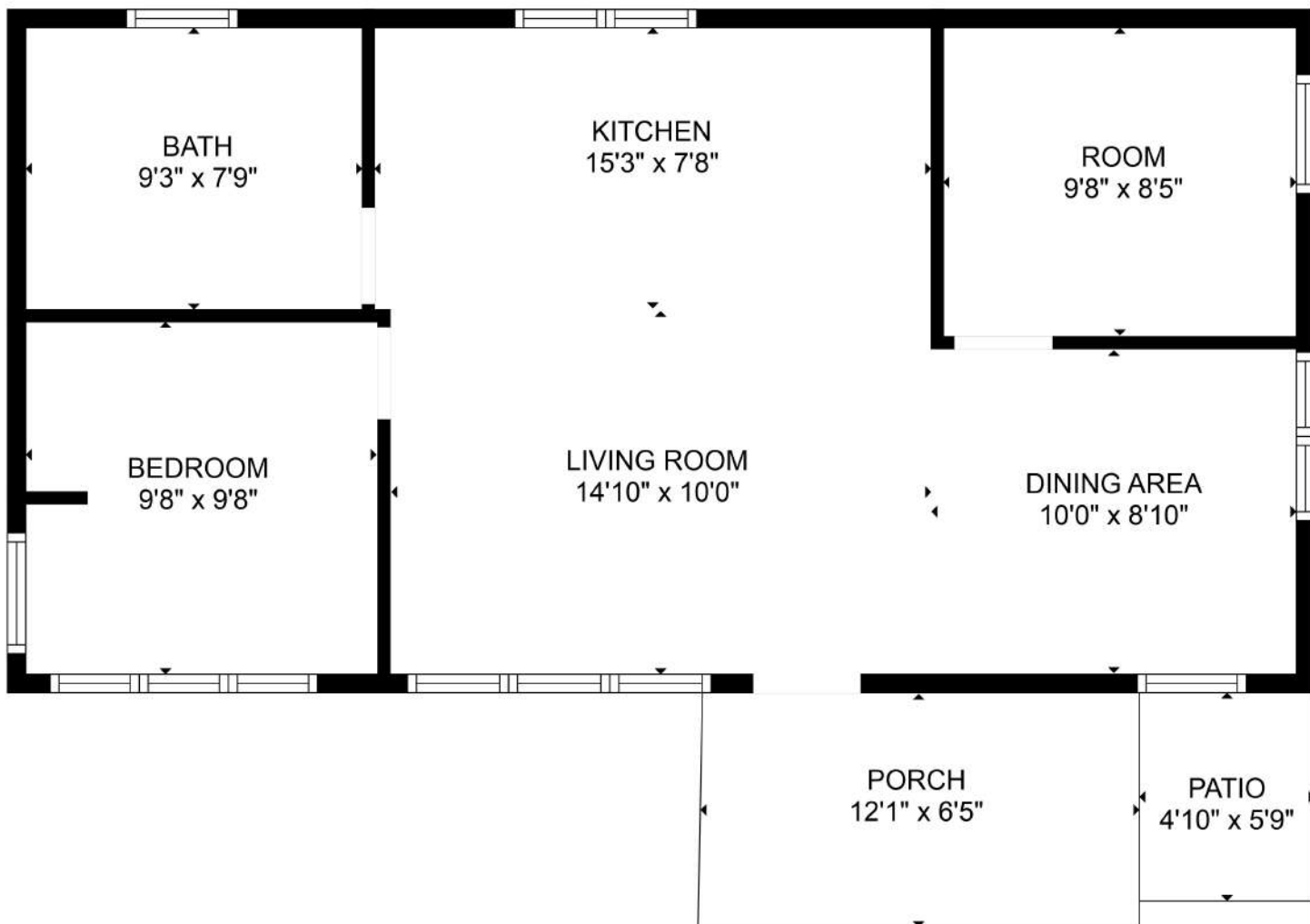
6. Room:

$$9'8'' \times 8'5'' \Rightarrow 9.667 \times 8.417 = 81.32 \text{ sq ft}$$

---

## Total Area (excluding porch and patio):

$$148.33 + 116.97 + 88.33 + 93.47 + 71.69 + 81.32 = \boxed{599.11 \text{ sq ft}}$$



FLOOR PLAN CREATED BY CUBICASA APP. MEASUREMENTS DEEMED HIGHLY RELIABLE BUT NOT GUARANTEED.