

Sanctuary Land & Lake, LLC

Kershaw County, SC

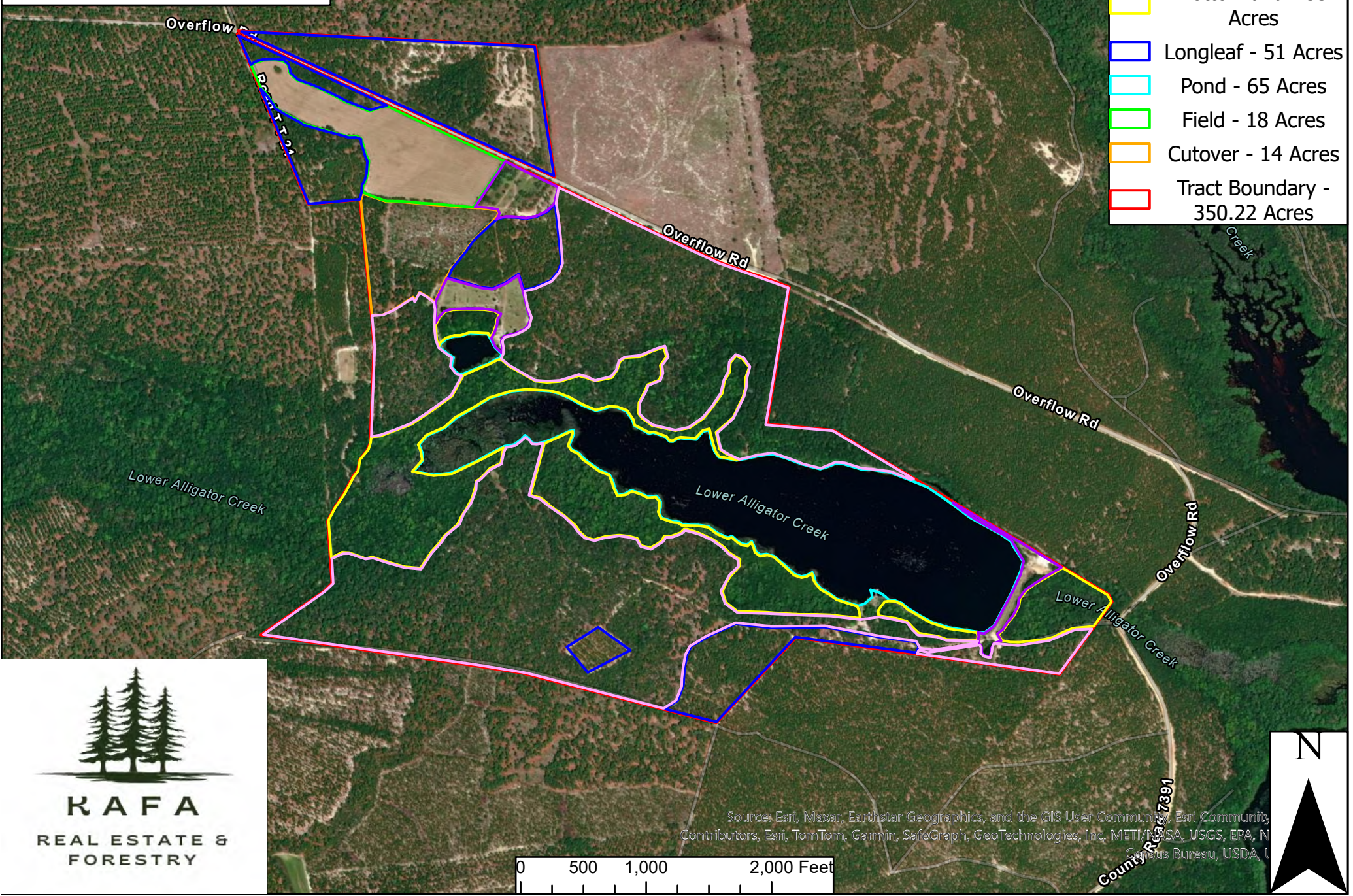
142 000 000 002

142 000 000 003

142 000 000 006

Legend

- Upland - 139 Acres
- Open - 10 Acres
- Bottomland - 53 Acres
- Longleaf - 51 Acres
- Pond - 65 Acres
- Field - 18 Acres
- Cutover - 14 Acres
- Tract Boundary - 350.22 Acres



RAFA
REAL ESTATE &
FORESTRY

Sources: Esri, Maxar, Earthstar Geographics, and the GIS User Community, Esri Community Contributors, Esri, TomTom, Garmin, SafeGraph, GeoTechnologies, Inc, METI/NOAA, USGS, EPA, N
Census Bureau, USDA, I