



Farmers  
National  
Company™

[www.FarmersNational.com/ONeill](http://www.FarmersNational.com/ONeill)

L-2500380

SCAN THE QR CODE  
FOR MORE INFO!



# HOME FOR SALE

208 East Elm Street | Bloomfield, Nebraska

OFFERED AT

**\$120,000**

## Highlights:

- Large double lot with mature trees
- Updated exterior finishes
- Close proximity to local school



**For additional information, please contact:**

**Kendra Suhr, Real Estate Agent**

**Cell: (402) 841-1299**

**[KSuhr@FarmersNational.com](mailto:KSuhr@FarmersNational.com)**



# Property Information

## Property Location:

208 East Elm Street, Bloomfield, Nebraska

## Lot Size:

17,140 sq ft

## Residential Description:

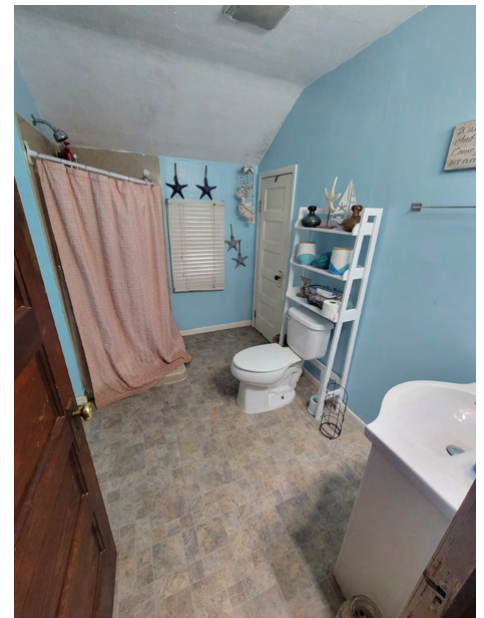
This charming home has great potential! Exterior finishes have had updates with the home sitting on a large double lot surrounded by mature shade trees. The interior features four bedrooms and one bathroom. The kitchen, living and dining rooms offer plenty of space to move right into or update to your liking. The elementary and high school are just a short walk away as well as the local swimming pool! Family friendly neighborhood with many amenities right in this small community!

## 2024 Taxes:

\$757.48 for (year) 2024

## Price:

\$120,000



Information provided was obtained from sources deemed reliable, but the broker makes no guarantees as to its accuracy. All prospective buyers are urged to inspect the property, its title and to rely on their own conclusions. Seller reserves the right to refuse any or all offers submitted and may withdraw the property from offering without notice. Farmers National Company and its representatives on the reverse side are the Designated Agents for the seller.