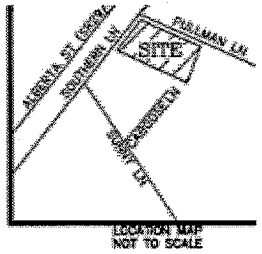
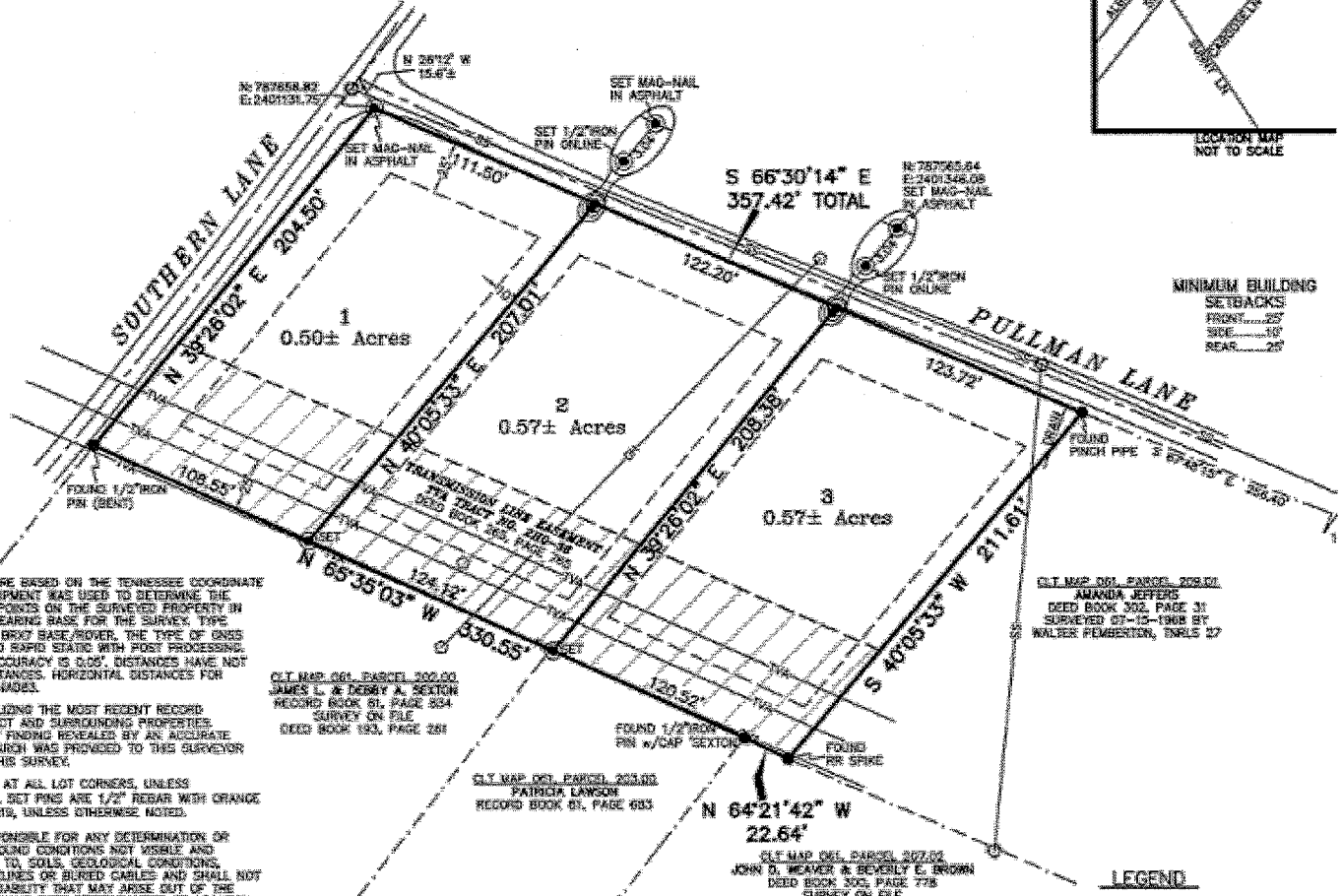


MAP REFERENCE

EL. NUMBER 208.00 AS SHOWN ON SCOTT COUNTY PROPERTY MAP



TENNESSEE STATE PLANE



MINIMUM BUILDING
SETBACKS:
FRONT...25'
SIDE...10'
REAR...25'

SHOWN HEREON ARE BASED ON THE TENNESSEE COORDINATE SYSTEM OF 1983. GNSS EQUIPMENT WAS USED TO DETERMINE THE POSITION OF TWO CONTROL POINTS ON THE SURVEYED PROPERTY IN ORDER TO ESTABLISH THE BEARING BASE FOR THE SURVEY. TYPE 1 GNSS RECEIVER WAS USED. CARLSON BRK7 BASE/MOVER, THE TYPE OF GNSS NETWORK ADJUSTED SAID STATION WITH POST PROCESSING. THE POSITIONAL ACCURACY IS 0.05'. DISTANCES HAVE NOT BEEN ADJUSTED TO GRID DISTANCES. HORIZONTAL DISTANCES FOR THIS SURVEY ARE IN METERS.

AS PREPARED UTILIZING THE MOST RECENT RECORDS FOR THE SUBJECT AND SURROUNDING PROPERTIES. SUBJECT TO ANY FINDING REVEALED BY AN ACCURATE TITLE SEARCH. NO TITLE SEARCH WAS PROVIDED TO THIS SURVEYOR FOR COMPILATION OF THIS SURVEY.

CORNER MARKERS AT ALL LOT CORNERS, UNLESS OTHERWISE NOTED. ALL SET PINS ARE 1/2" REBAR WITH ORANGE CAPS, UNLESS OTHERWISE NOTED.

SYOR IS NOT RESPONSIBLE FOR ANY DETERMINATION OR OF ANY UNDERGROUND CONDITIONS NOT VISIBLE AND BUT NOT LIMITED TO, SOILS, GEOLOGICAL CONDITIONS, DEVICES AND PIPELINES OR BURIED CABLES AND SHALL NOT BE LIABLE FOR ANY LIABILITY THAT MAY ARISE OUT OF THE

LEGEND