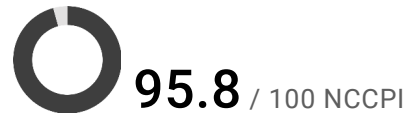
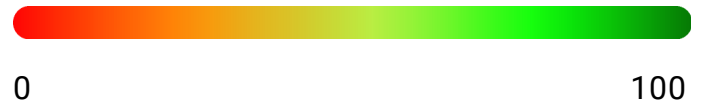
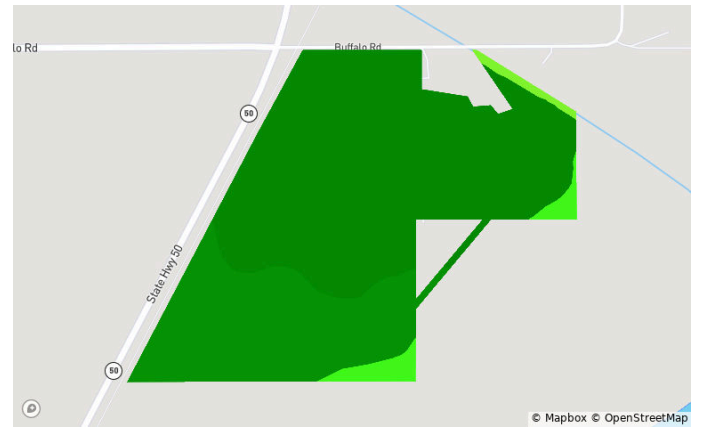
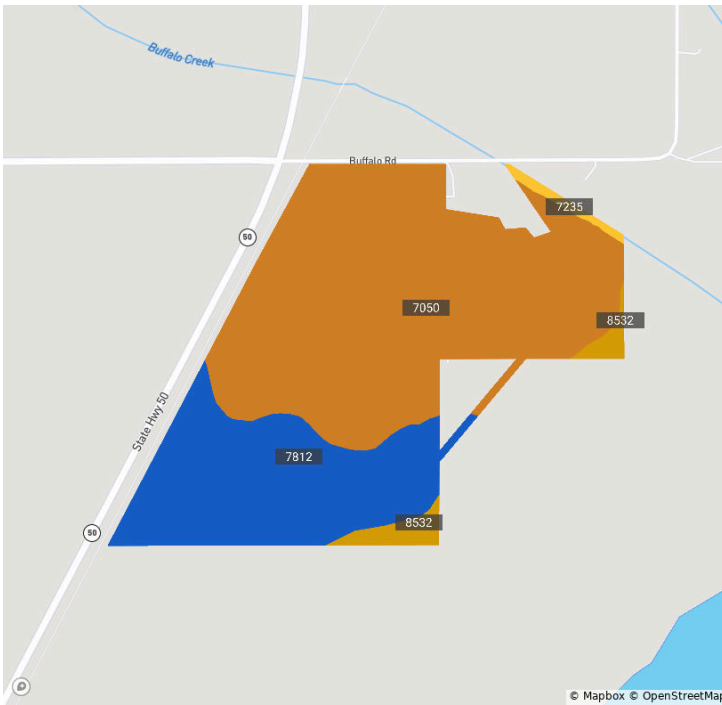


Soils

Sarpy, NE • Township: Platford-Springfield I
 Locations: 01-12N-11E, 02-12N-11E

133.36 acres, 2 selections



Code	Soil Description	Acres	% of Field	Non-IRR Class	IRR Class	NCCPI
7050	Kennebec silt loam, occasionally flooded	88.3	66.1%	2w	2w	97.3
7812	Smithland-Kenridge silty clay loams, occasionally flooded	40.1	30.1%	2w	2w	95.9
8532	Novina-Gibbon complex, occasionally flooded	3.9	2.9%	2w	2w	70.3
7235	Judson-Nodaway channeled-Contrary complex, 0 to 12 percent slopes	1.3	0.9%	6w	4e	61.8