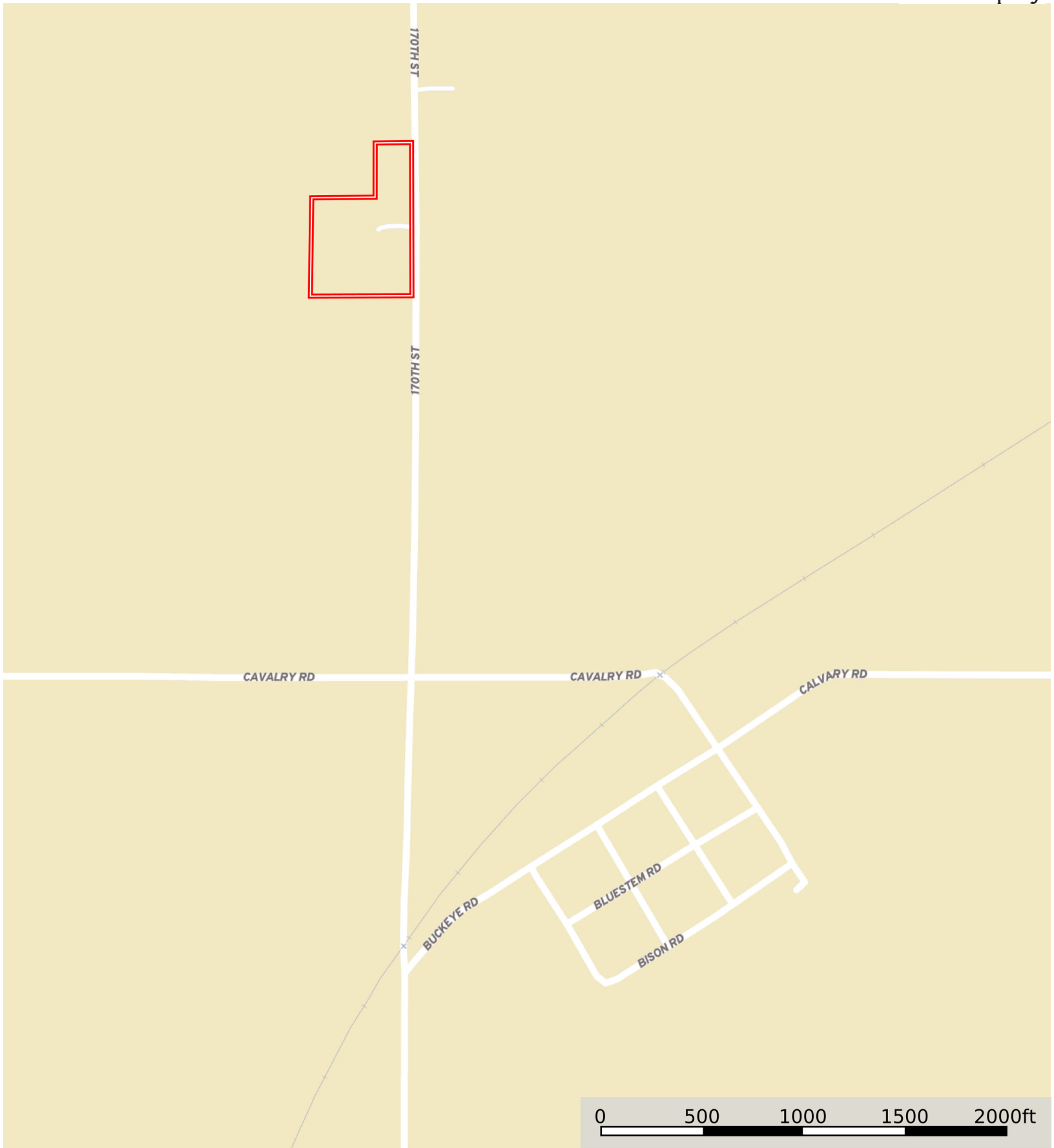


L-2500458-1

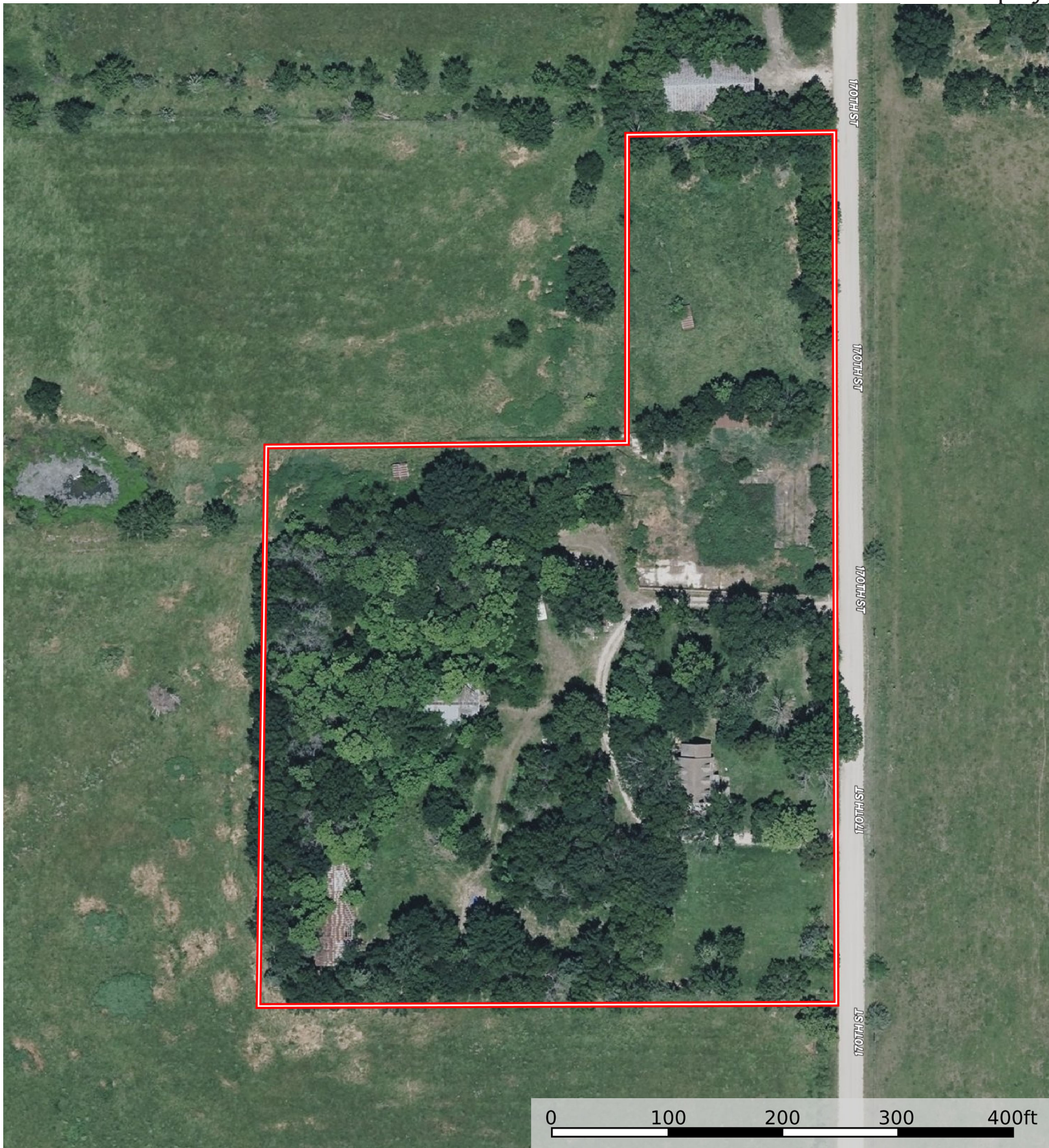
Bourbon County, Kansas, 6.695 AC +/-



 Boundary

L-2500458-1

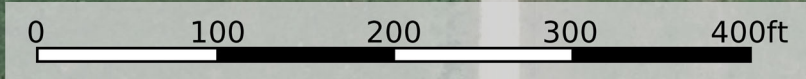
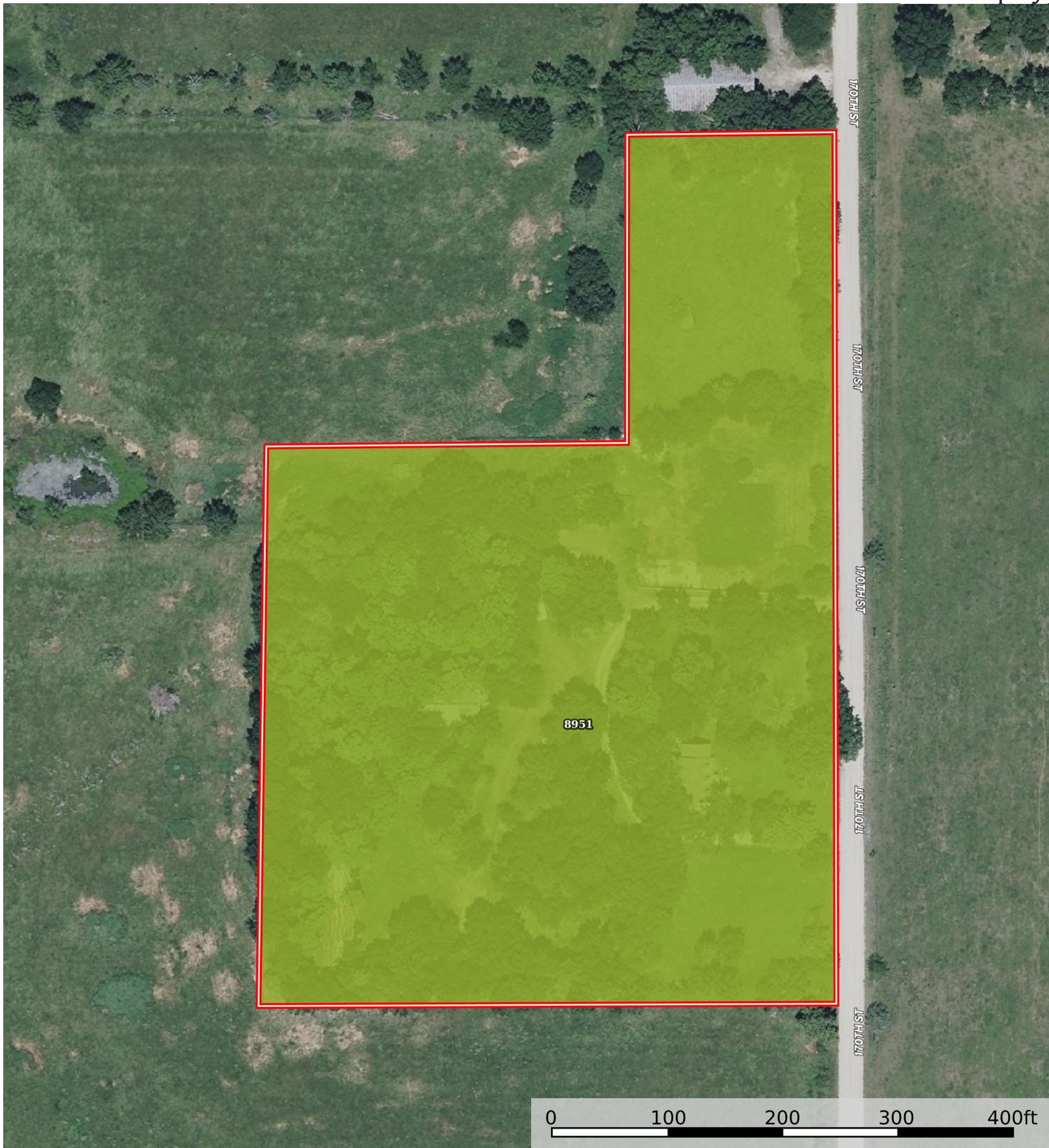
Bourbon County, Kansas, 6.695 AC +/-



 Boundary

L-2500458-1

Bourbon County, Kansas, 6.695 AC +/-



 Boundary

Boundary 6.69 ac

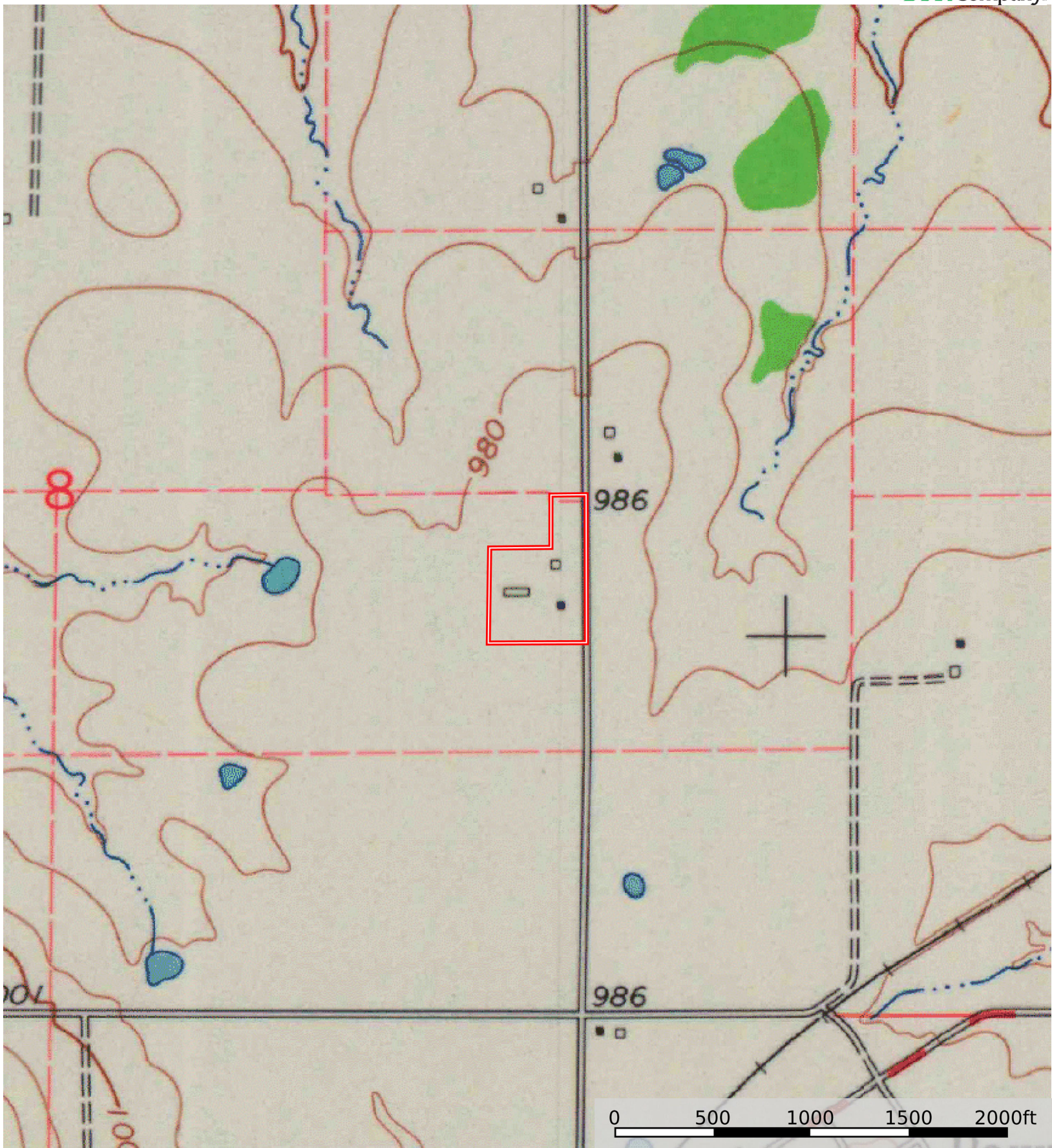
SOIL CODE	SOIL DESCRIPTION	ACRES	%	CPI	NCCPI	CAP
8951	Wagstaff silty clay loam, 1 to 3 percent slopes	6.69	100	0	52	3e
TOTALS		6.69(*)	100%	-	52.0	3


(*) Total acres may differ in the second decimal compared to the sum of each acreage soil. This is due to a round error because we only show the acres of each soil with two decimal.



L-2500458-1

Bourbon County, Kansas, 6.695 AC +/-



 Boundary