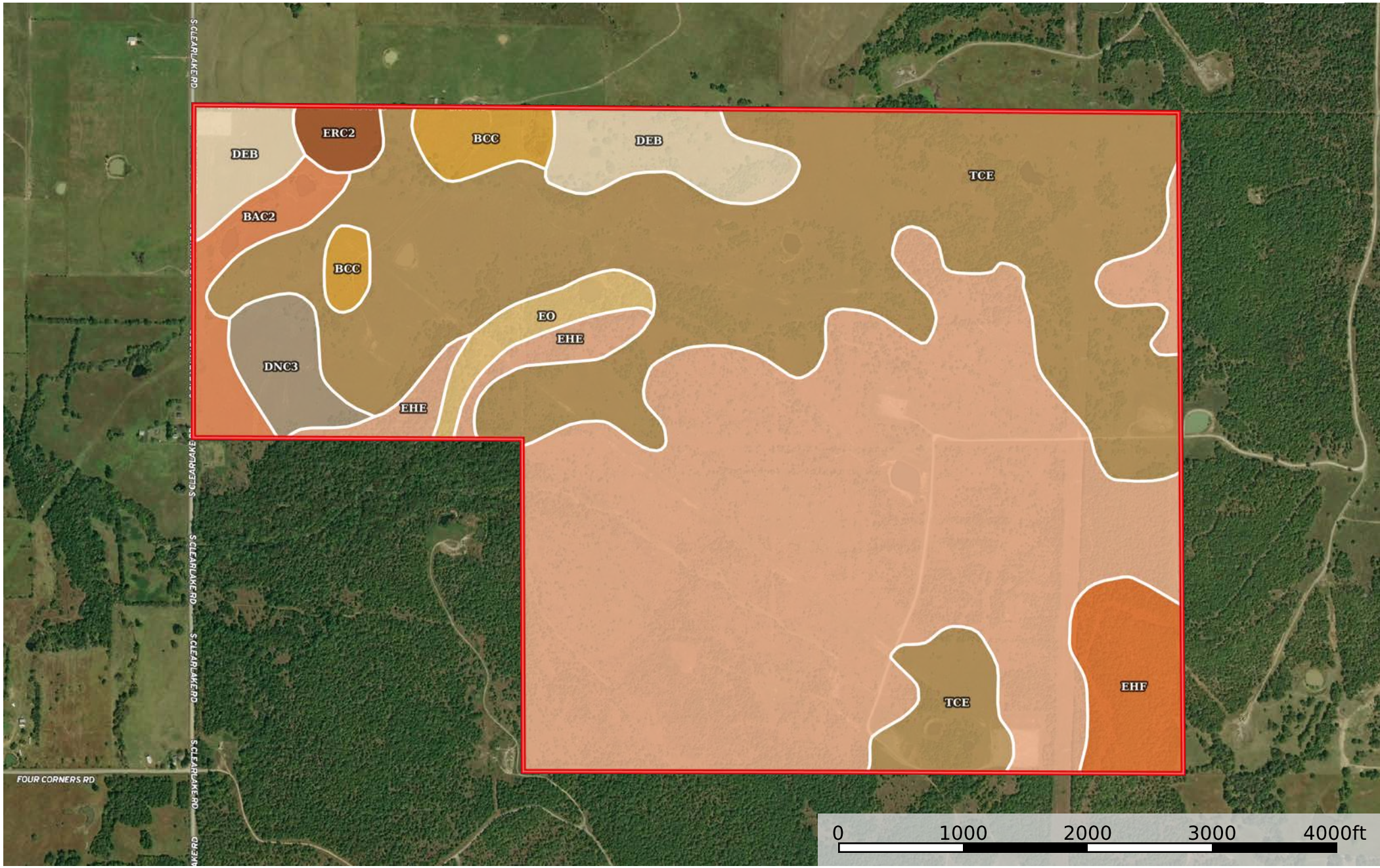


Combs 800 ac  
Oklahoma, AC +/-



 Boundary

|  Boundary 803.8 ac

SOIL CODE	SOIL DESCRIPTION	ACRES	%	CPI	NCCPI	CAP
EhE	Bengal-Clebit-Clearview complex, 5 to 30 percent slopes	366.0 1	45.54	0	21	7e
TcE	Talihina-Eram-Collinsville complex, 5 to 20 percent slopes	292.9 3	36.44	0	29	6e
DeB	Dennis loam, 1 to 3 percent slopes	40.13	4.99	0	64	2e
EhF	Bengal-Clebit-Rock outcrop complex, 30 to 60 percent slopes	28.24	3.51	0	6	7e
BaC2	Bates fine sandy loam, 1 to 3 percent slopes, eroded	21.14	2.63	0	52	3e
BcC	Bates-Coweta complex, 3 to 5 percent slopes	17.51	2.18	0	42	3e
DnC3	Dennis-Pharoah-Eram complex, 3 to 5 percent slopes, severely eroded	16.94	2.11	0	51	6e
Eo	Rexor and Verdigris soils, 0 to 1 percent slopes, frequently flooded	13.36	1.66	0	64	5w
ErC2	Eram clay loam, 3 to 5 percent slopes, eroded	7.54	0.94	0	41	4e
TOTALS		803.8( *)	100%	-	28.34	6.11









(\*) Total acres may differ in the second decimal compared to the sum of each acreage soil. This is due to a round error because we only show the acres of each soil with two decimal.

## Capability Legend

Increased Limitations and Hazards

Decreased Adaptability and Freedom of Choice Users

Land, Capability

								
	1	2	3	4	5	6	7	8
'Wild Life'	•	•	•	•	•	•	•	•
Forestry	•	•	•	•	•	•	•	
Limited	•	•	•	•	•	•	•	
Moderate	•	•	•	•	•	•		
Intense	•	•	•	•	•			
Limited	•	•	•	•				
Moderate	•	•	•					
Intense	•	•						
Very Intense	•							

### Grazing Cultivation

(c) climatic limitations (e) susceptibility to erosion

(s) soil limitations within the rooting zone (w) excess of water