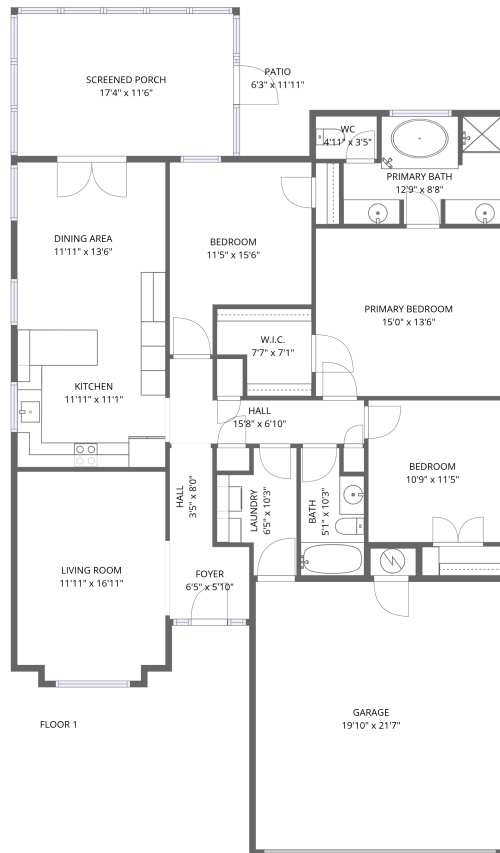


Home report

201 South Bradbury Circle, Daphne, Baldwin County, Alabama,
United States, 36526



Total Area: 1476 sq. ft

Floor 1: 1476 sq. ft

Excluded: Patio 73 sq. ft, Screened porch 200 sq. ft, Garage 428 sq. ft, Walls: 137 sq. ft

Property summary



1
Floors



3
Bedrooms



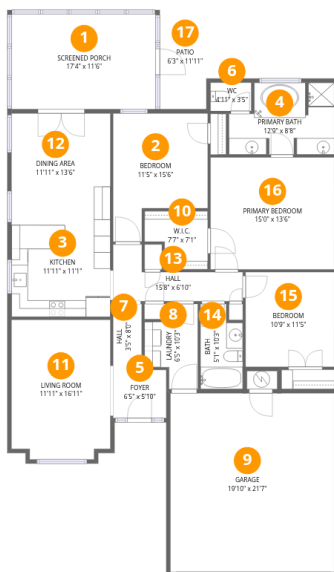
2
Bathrooms



1
Garages

Home report

201 South Bradbury Circle, Daphne, Baldwin County, Alabama, United States, 36526



Room dimensions

Floor 1

Total:1476sqft

Excluded: 701sqft

#		Max Dimensions	sqft	Included
1	Screened Porch	17'4" x 11'6"	200 sq. ft	No
2	Bedroom	11'5" x 15'6"	145 sq. ft	Yes
3	Kitchen	11'11" x 11'1"	133 sq. ft	Yes
4	Primary Bath	12'9" x 8'8"	97 sq. ft	Yes
5	Foyer	6'5" x 5'10"	37 sq. ft	Yes
6	WC	4'11" x 3'5"	17 sq. ft	Yes
7	Hall	3'5" x 8'0"	28 sq. ft	Yes
8	Laundry	6'5" x 10'3"	52 sq. ft	Yes
9	Garage	19'10" x 21'7"	428 sq. ft	No
10	W.I.C.	7'7" x 7'1"	46 sq. ft	Yes
11	Living Room	11'11" x 16'11"	196 sq. ft	Yes

Home report

**201 South Bradbury Circle, Daphne, Baldwin County, Alabama,
United States, 36526**

#		Max Dimensions	sqft	Included
12	Dining Area	11'11" x 13'6"	161 sq. ft	Yes
13	Hall	15'8" x 6'10"	67 sq. ft	Yes
14	Bath	5'1" x 10'3"	48 sq. ft	Yes
15	Bedroom	10'9" x 11'5"	123 sq. ft	Yes
16	Primary Bedroom	15'0" x 13'6"	203 sq. ft	Yes
17	Patio	6'3" x 11'11"	73 sq. ft	No

201 South Bradbury Circle, Daphne, Baldwin County, Alabama,
United States, 36526

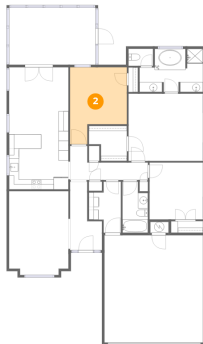
1 Floor 1 - Screened Porch



Max Dimensions: 17'4" x
11'6"
Calculated Area: 200 sq. ft
Included: No

Heated: No
Finished: No
Enclosed: No
Contiguous:
Yes
Permitted: Yes
Wet space: No
Addition: No
Conversion: No

2 Floor 1 - Bedroom

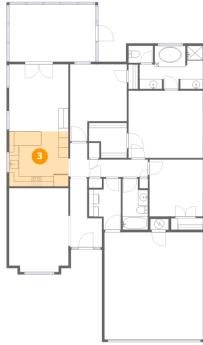


Max Dimensions: 11'5" x
15'6"
Calculated Area: 145 sq. ft
Included: Yes

Heated: Yes
Finished: Yes
Enclosed: Yes
Contiguous:
Yes
Permitted: Yes
Wet space: No
Addition: No
Conversion: No

201 South Bradbury Circle, Daphne, Baldwin County, Alabama, United States, 36526

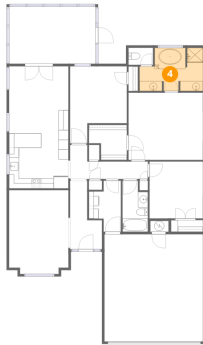
3 Floor 1 - Kitchen



Max Dimensions: 11'11" x 11'1"
Calculated Area: 133 sq. ft
Included: Yes

Heated: Yes
Finished: Yes
Enclosed: Yes
Contiguous: Yes
Permitted: Yes
Wet space: No
Addition: No
Conversion: No

4 Floor 1 - Primary Bath



Max Dimensions: 12'9" x 8'8"
Calculated Area: 97 sq. ft
Included: Yes

Heated: Yes
Finished: Yes
Enclosed: Yes
Contiguous: Yes
Permitted: Yes
Wet space: Yes
Addition: No
Conversion: No

5 Floor 1 - Foyer



Max Dimensions: 6'5" x 5'10"
Calculated Area: 37 sq. ft
Included: Yes

Heated: Yes
Finished: Yes
Enclosed: Yes
Contiguous: Yes
Permitted: Yes
Wet space: No
Addition: No
Conversion: No

201 South Bradbury Circle, Daphne, Baldwin County, Alabama,
United States, 36526

6 Floor 1 - WC



Max Dimensions: 4'11" x 3'5"
Calculated Area: 17 sq. ft
Included: Yes

Heated: Yes
Finished: Yes
Enclosed: Yes
Contiguous: Yes
Permitted: Yes
Wet space: Yes
Addition: No
Conversion: No

7 Floor 1 - Hall



Max Dimensions: 3'5" x 8'0"
Calculated Area: 28 sq. ft
Included: Yes

Heated: Yes
Finished: Yes
Enclosed: Yes
Contiguous: Yes
Permitted: Yes
Wet space: No
Addition: No
Conversion: No

8 Floor 1 - Laundry

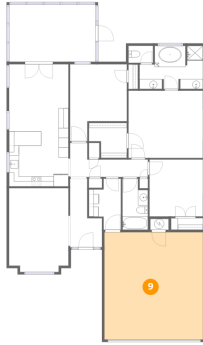


Max Dimensions: 6'5" x 10'3"
Calculated Area: 52 sq. ft
Included: Yes

Heated: Yes
Finished: Yes
Enclosed: Yes
Contiguous: Yes
Permitted: Yes
Wet space: No
Addition: No
Conversion: No

201 South Bradbury Circle, Daphne, Baldwin County, Alabama,
United States, 36526

9 Floor 1 - Garage



Max Dimensions: 19'10" x 21'7"
Calculated Area: 428 sq. ft
Included: No

Heated: No
Finished: No
Enclosed: Yes
Contiguous: Yes
Permitted: Yes
Wet space: No
Addition: No
Conversion: No

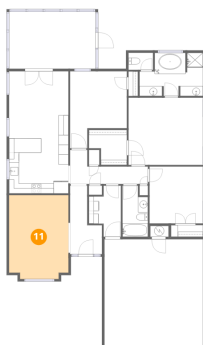
10 Floor 1 - W.I.C.



Max Dimensions: 7'7" x 7'1"
Calculated Area: 46 sq. ft
Included: Yes

Heated: Yes
Finished: Yes
Enclosed: Yes
Contiguous: Yes
Permitted: Yes
Wet space: No
Addition: No
Conversion: No

11 Floor 1 - Living Room

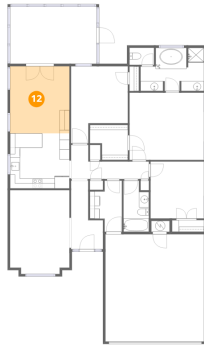


Max Dimensions: 11'11" x 16'11"
Calculated Area: 196 sq. ft
Included: Yes

Heated: Yes
Finished: Yes
Enclosed: Yes
Contiguous: Yes
Permitted: Yes
Wet space: No
Addition: No
Conversion: No

201 South Bradbury Circle, Daphne, Baldwin County, Alabama,
United States, 36526

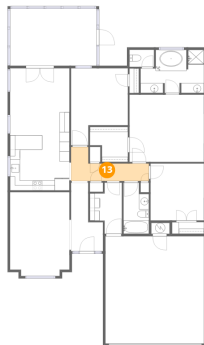
12 Floor 1 - Dining Area



Max Dimensions: 11'11" x 13'6"
Calculated Area: 161 sq. ft
Included: Yes

Heated: Yes
Finished: Yes
Enclosed: Yes
Contiguous: Yes
Permitted: Yes
Wet space: No
Addition: No
Conversion: No

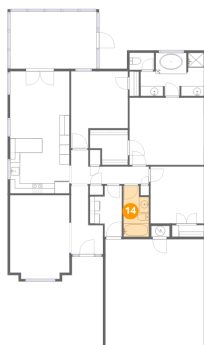
13 Floor 1 - Hall



Max Dimensions: 15'8" x 6'10"
Calculated Area: 67 sq. ft
Included: Yes

Heated: Yes
Finished: Yes
Enclosed: Yes
Contiguous: Yes
Permitted: Yes
Wet space: No
Addition: No
Conversion: No

14 Floor 1 - Bath

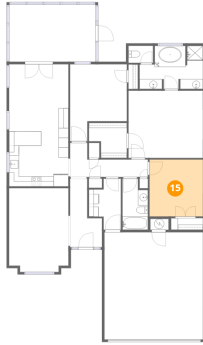


Max Dimensions: 5'1" x 10'3"
Calculated Area: 48 sq. ft
Included: Yes

Heated: Yes
Finished: Yes
Enclosed: Yes
Contiguous: Yes
Permitted: Yes
Wet space: Yes
Addition: No
Conversion: No

201 South Bradbury Circle, Daphne, Baldwin County, Alabama,
United States, 36526

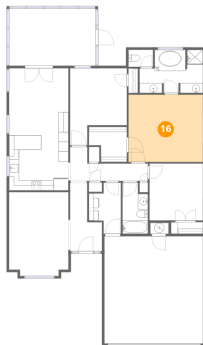
15 Floor 1 - Bedroom



Max Dimensions: 10'9" x 11'5"
Calculated Area: 123 sq. ft
Included: Yes

Heated: Yes
Finished: Yes
Enclosed: Yes
Contiguous: Yes
Permitted: Yes
Wet space: No
Addition: No
Conversion: No

16 Floor 1 - Primary Bedroom



Max Dimensions: 15'0" x 13'6"
Calculated Area: 203 sq. ft
Included: Yes

Heated: Yes
Finished: Yes
Enclosed: Yes
Contiguous: Yes
Permitted: Yes
Wet space: No
Addition: No
Conversion: No

17 Floor 1 - Patio



Max Dimensions: 6'3" x 11'11"
Calculated Area: 73 sq. ft
Included: No

Heated: No
Finished: No
Enclosed: No
Contiguous: Yes
Permitted: Yes
Wet space: No
Addition: No
Conversion: No