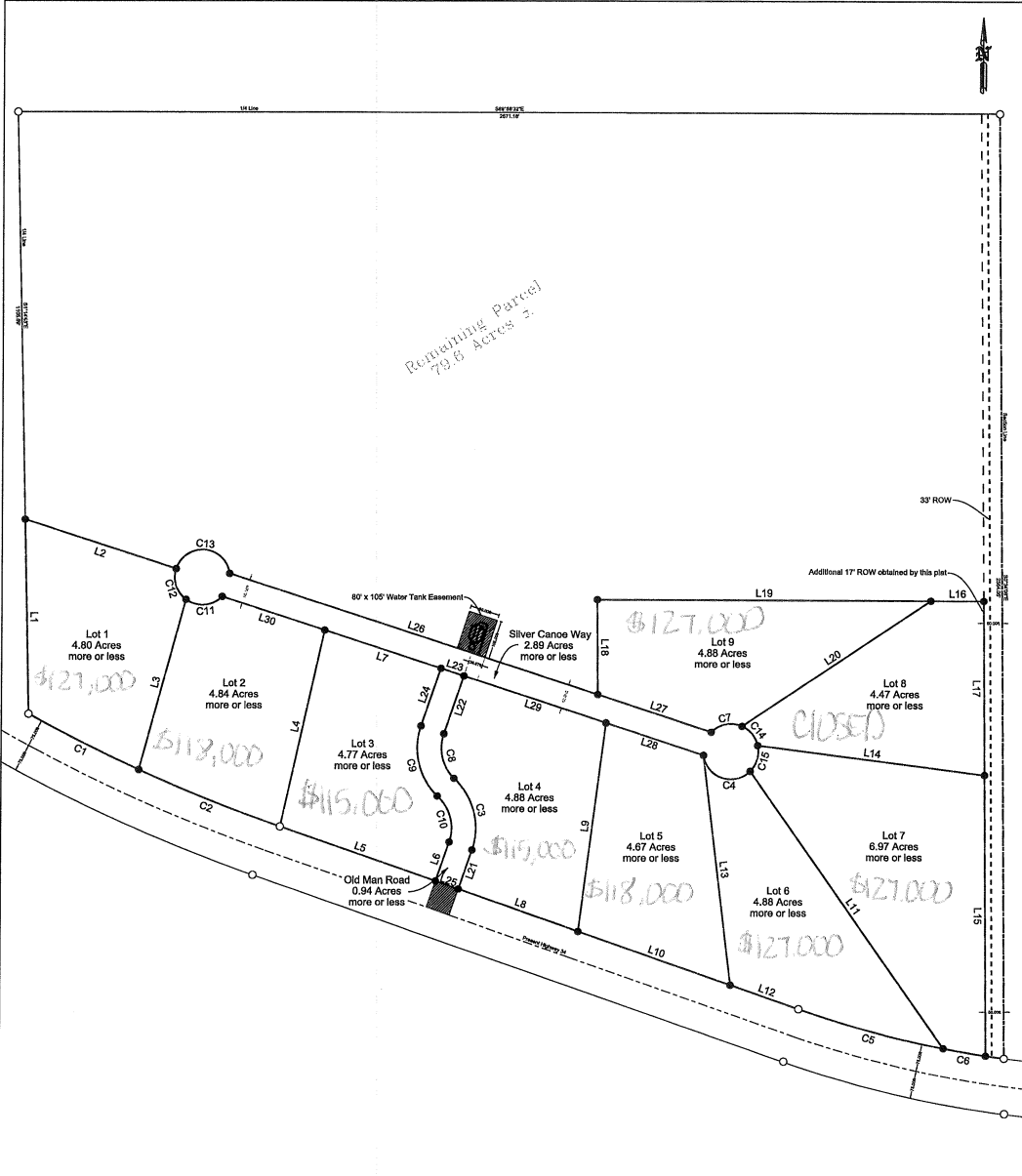


PLAT OF LOTS 1-9, FORT GEORGE ESTATES

located in the SE1/4 Section 25, less USA Take & Highway 34 Right of Way,
Township 110 North, Range 77 West of the 5th Principal Meridian,
Hughes County, South Dakota

SCALE: 1" = 200 FEET

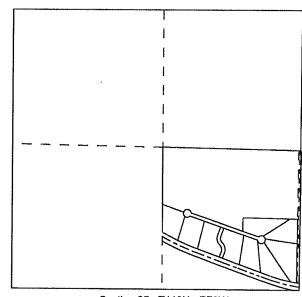


Line Table		
Name	Length	Direction
L1	531.19	S 1°14'43" E
L2	432.07	N 71°57'10" W
L3	480.52	S 15°52'32" W
L4	547.52	N 12°31'41" E
L5	449.40	S 70°50'01" E
L6	112.65	N 19°01'57" E
L7	333.70	N 71°57'10" W
L8	346.23	S 70°50'01" E
L9	572.17	S 7°20'17" W
L10	440.27	S 70°50'01" E
L11	920.85	S 35°07'13" E
L12	197.14	N 70°50'01" W
L13	629.92	N 6°58'21" W
L14	622.34	S 82°51'43" E
L15	764.76	S 0°34'08" E
L16	144.06	S 66°58'32" E
L17	472.38	S 0°34'08" W
L18	256.66	N 0°34'08" W
L19	908.01	S 89°58'32" E
L20	615.91	S 56°11'05" W
L21	112.85	N 19°01'57" E
L22	166.56	N 18°50'51" E
L23	66.01	N 71°57'10" W
L24	165.64	S 18°50'51" W
L25	66.00	S 70°50'01" E
L26	1056.31	S 71°57'10" W
L27	325.69	S 71°57'10" E
L28	280.10	N 71°57'10" W
L29	406.13	N 71°57'10" W
L30	294.07	N 71°57'10" W

Note 1: The coordinates, bearings, distances, and areas shown on the plat are based on South Dakota State Plane Coordinate System (old South Zone).
NAD 83/11 epoch, 2010.00
Geoid 18 SP = 0.9999108

Note 2: Plat is subject to Easement and Right to Share Water/Wast Water Line Easement. Filed for record on 8th day of November 2008 @ 4:30 PM, in Book 06, Page 2996.

Curve Table							
Name	Radius	Arc Length	Chord Length	Tangent Length	Middle Ordinate	External Distance	Chord Direction
C1	4508.66	395.91	335.83	168.03	3.13	3.13	S 63°29'19" E
C2	4508.66	414.61	414.47	207.46	4.77	4.77	S 68°11'28" E
C3	163.00	213.74	201.80	120.95	30.33	36.36	S 14°25'40" E
C4	75.00	166.31	134.27	150.60	41.57	93.24	S 71°34'48" E
C5	2789.79	408.82	408.45	204.78	7.49	7.51	N 74°59'52" W
C6	2789.79	117.01	117.00	58.51	0.61	0.61	N 60°23'51" W
C7	75.00	91.14	85.63	52.15	13.42	16.35	S 76°57'40" W
C8	117.00	136.44	123.79	72.03	17.71	20.87	N 13°05'25" W
C9	163.00	206.07	195.38	115.51	28.25	33.40	S 13°24'44" E
C10	117.00	137.94	130.09	78.25	19.75	23.76	S 14°49'29" E
C11	75.00	107.73	98.70	65.54	18.52	24.60	S 85°17'50" W
C12	75.00	93.73	87.74	54.09	14.17	17.47	N 17°45'12" W
C13	75.00	201.45	146.13	323.56	58.06	297.14	S 85°02'12" E
C14	75.00	70.24	67.70	37.83	8.07	9.05	S 98°23'62" E
C15	75.00	75.22	72.11	41.11	9.23	10.33	S 16°09'45" W



- LEGEND**
- - Found Corner
 - - Set 60" x 24" Rebar w/ Cap
"Broz Eng RLS # 15034"
 - ▣ - Existing Approach

3030 Airport Rd., Box 23
Pierre, SD 57501
PH: 605.224.1123

Broz
ENGINEERING, INC.