

2111 EVERLY
BROTHERS BLVD.
POWDERLY
KENTUCKY
42367

VICINITY MAP

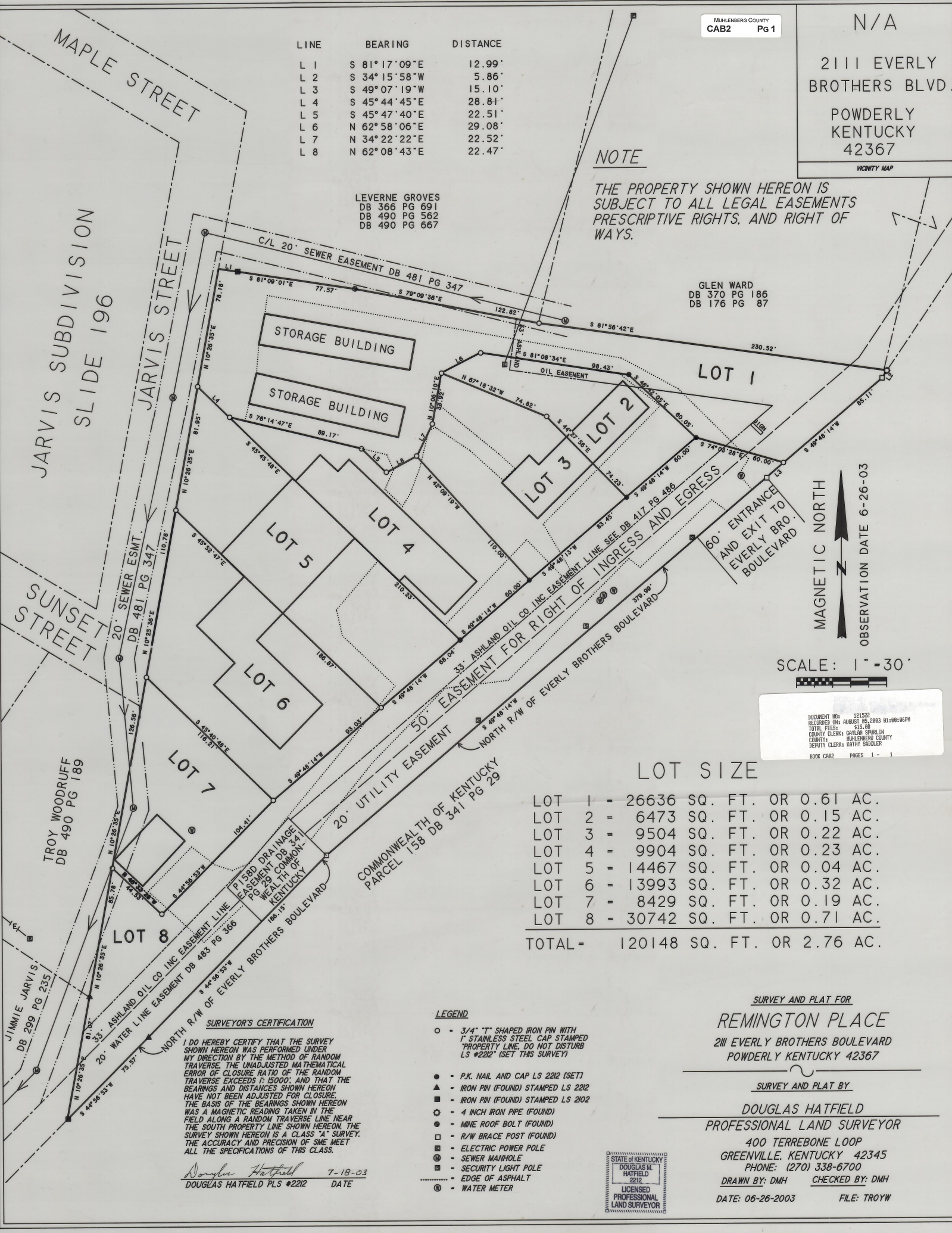
LINE	BEARING	DISTANCE
L 1	S 81° 17' 09" E	12.99'
L 2	S 34° 15' 58" W	5.86'
L 3	S 49° 07' 19" W	15.10'
L 4	S 45° 44' 45" E	28.81'
L 5	S 45° 47' 40" E	22.51'
L 6	N 62° 58' 06" E	29.08'
L 7	N 34° 22' 22" E	22.52'
L 8	N 62° 08' 43" E	22.47'

NOTE

THE PROPERTY SHOWN HEREON IS
SUBJECT TO ALL LEGAL EASEMENTS
PRESCRIPTIVE RIGHTS, AND RIGHT OF
WAYS.

LEVERNE GROVES
DB 366 PG 691
DB 490 PG 562
DB 490 PG 667

GLEN WARD
DB 370 PG 186
DB 176 PG 87



MAGNETIC NORTH
OBSERVATION DATE 6-26-03

SCALE: 1" = 30'

DOCUMENT NO: 121522
RECORDED ON: AUGUST 05, 2003 01:08:06PM
FEE: \$15.00
COUNTY CLERK: GAYLEN SPURLIN
COUNTY: MUHLENBERG COUNTY
DEPUTY CLERK: KATHY SADBLER
BOOK CAB2 PAGES 1 - 1

LOT SIZE

LOT 1	=	26636 SQ. FT.	OR	0.61 AC.
LOT 2	=	6473 SQ. FT.	OR	0.15 AC.
LOT 3	=	9504 SQ. FT.	OR	0.22 AC.
LOT 4	=	9904 SQ. FT.	OR	0.23 AC.
LOT 5	=	14467 SQ. FT.	OR	0.04 AC.
LOT 6	=	13993 SQ. FT.	OR	0.32 AC.
LOT 7	=	8429 SQ. FT.	OR	0.19 AC.
LOT 8	=	30742 SQ. FT.	OR	0.71 AC.
TOTAL	=	120148 SQ. FT.	OR	2.76 AC.

SURVEYOR'S CERTIFICATION
I DO HEREBY CERTIFY THAT THE SURVEY SHOWN HEREON WAS PERFORMED UNDER MY DIRECTION BY THE METHOD OF RANDOM TRAVERSE. THE UNADJUSTED MATHEMATICAL ERROR OF CLOSURE RATIO OF THE RANDOM TRAVERSE EXCEEDS 1:15000, AND THAT THE BEARINGS AND DISTANCES SHOWN HEREON HAVE NOT BEEN ADJUSTED FOR CLOSURE. THE BASIS OF THE BEARINGS SHOWN HEREON WAS A MAGNETIC READING TAKEN IN THE FIELD ALONG A RANDOM TRAVERSE LINE NEAR THE SOUTH PROPERTY LINE SHOWN HEREON. THE SURVEY SHOWN HEREON IS A CLASS "A" SURVEY. THE ACCURACY AND PRECISION OF SAME MEET ALL THE SPECIFICATIONS OF THIS CLASS.

Douglas Hatfield
DOUGLAS HATFIELD PLS #2212 7-18-03 DATE

- LEGEND**
- - 3/4" "T" SHAPED IRON PIN WITH 1" STAINLESS STEEL CAP STAMPED "PROPERTY LINE, DO NOT DISTURB LS #2212" (SET THIS SURVEY)
 - - P.K. NAIL AND CAP LS 2212 (SET)
 - ▲ - IRON PIN (FOUND) STAMPED LS 2212
 - - IRON PIN (FOUND) STAMPED LS 2102
 - ⊙ - 4 INCH IRON PIPE (FOUND)
 - ⊖ - MINE ROOF BOLT (FOUND)
 - - R/W BRACE POST (FOUND)
 - ⊕ - ELECTRIC POWER POLE
 - ⊗ - SEWER MANHOLE
 - ⊙ - SECURITY LIGHT POLE
 - - EDGE OF ASPHALT
 - ⊕ - WATER METER



SURVEY AND PLAT FOR
REMINGTON PLACE
2111 EVERLY BROTHERS BOULEVARD
POWDERLY KENTUCKY 42367

SURVEY AND PLAT BY
DOUGLAS HATFIELD
PROFESSIONAL LAND SURVEYOR

400 TERREBONE LOOP
GREENVILLE, KENTUCKY 42345
PHONE: (270) 338-6700

DRAWN BY: DMH CHECKED BY: DMH
DATE: 06-26-2003 FILE: TROYW