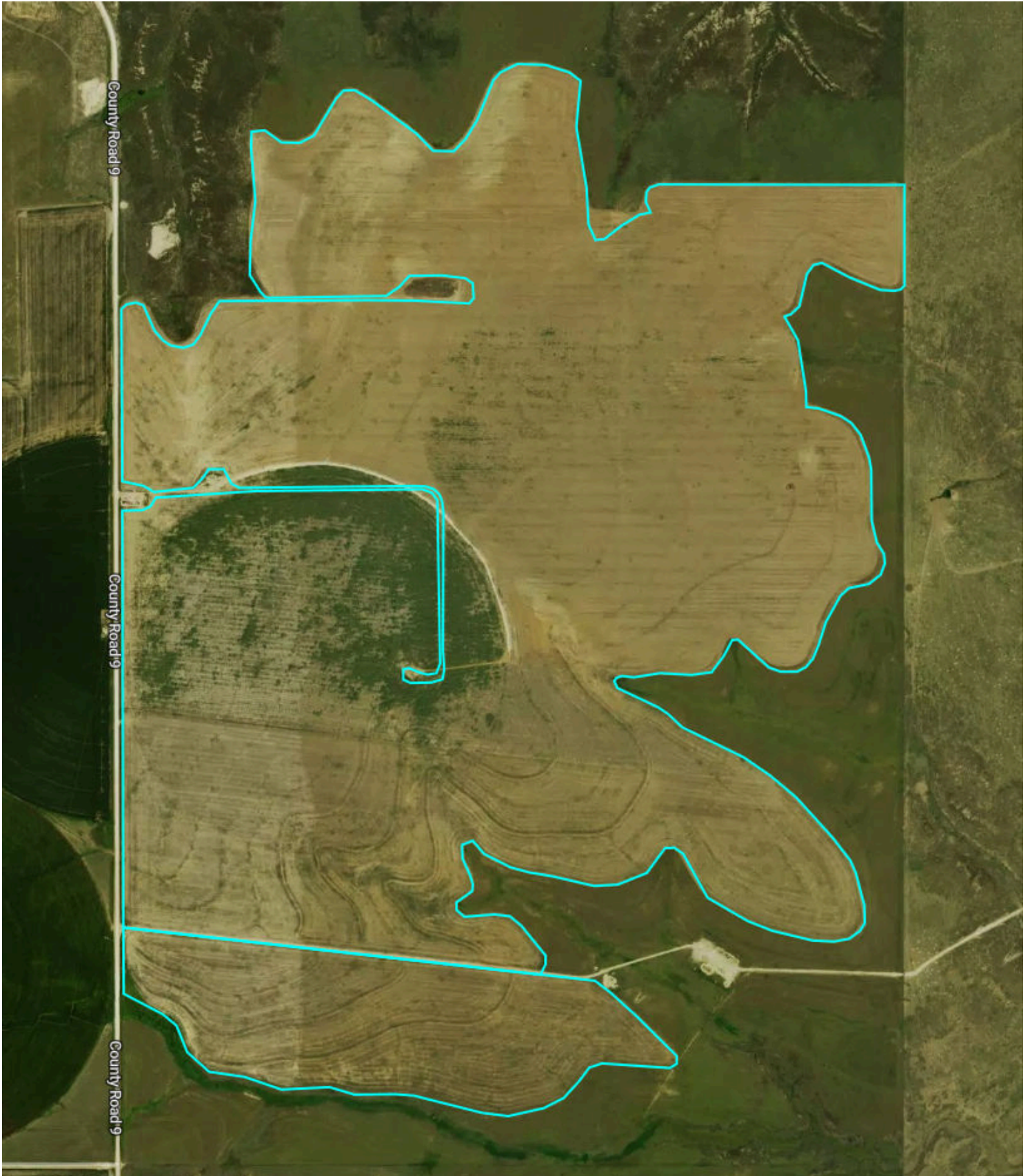


Overview



604.4 Acres, 2 Boundaries

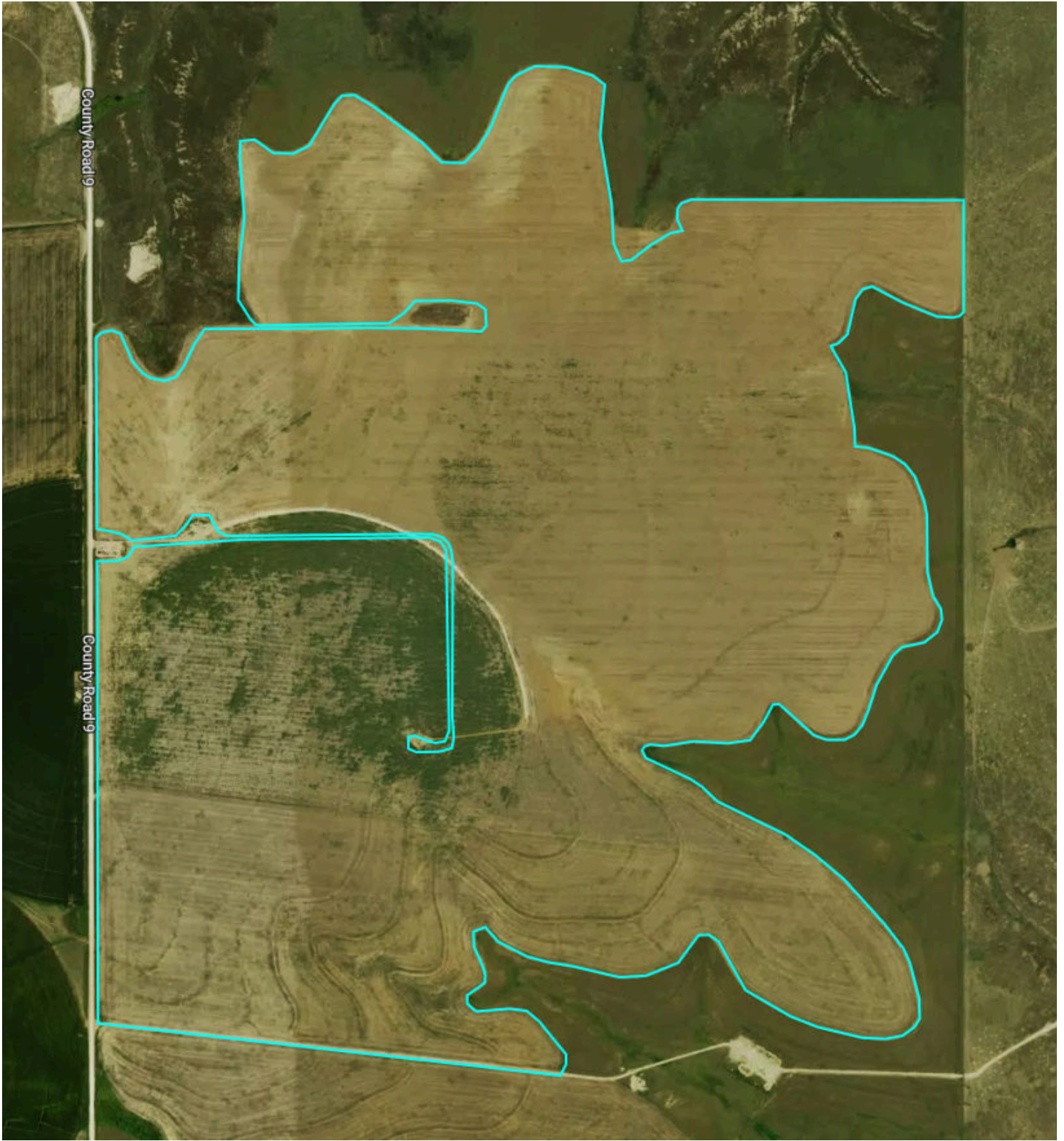


Overview



Lipscomb County, TX

537.3 Acres, Boundary 1 of 2



Lipscomb County, TX
Township: -

Locations
-

Acres
537.25

Overview



Lipscomb County, TX

67.1 Acres, Boundary 2 of 2



Lipscomb County, TX
Township: -

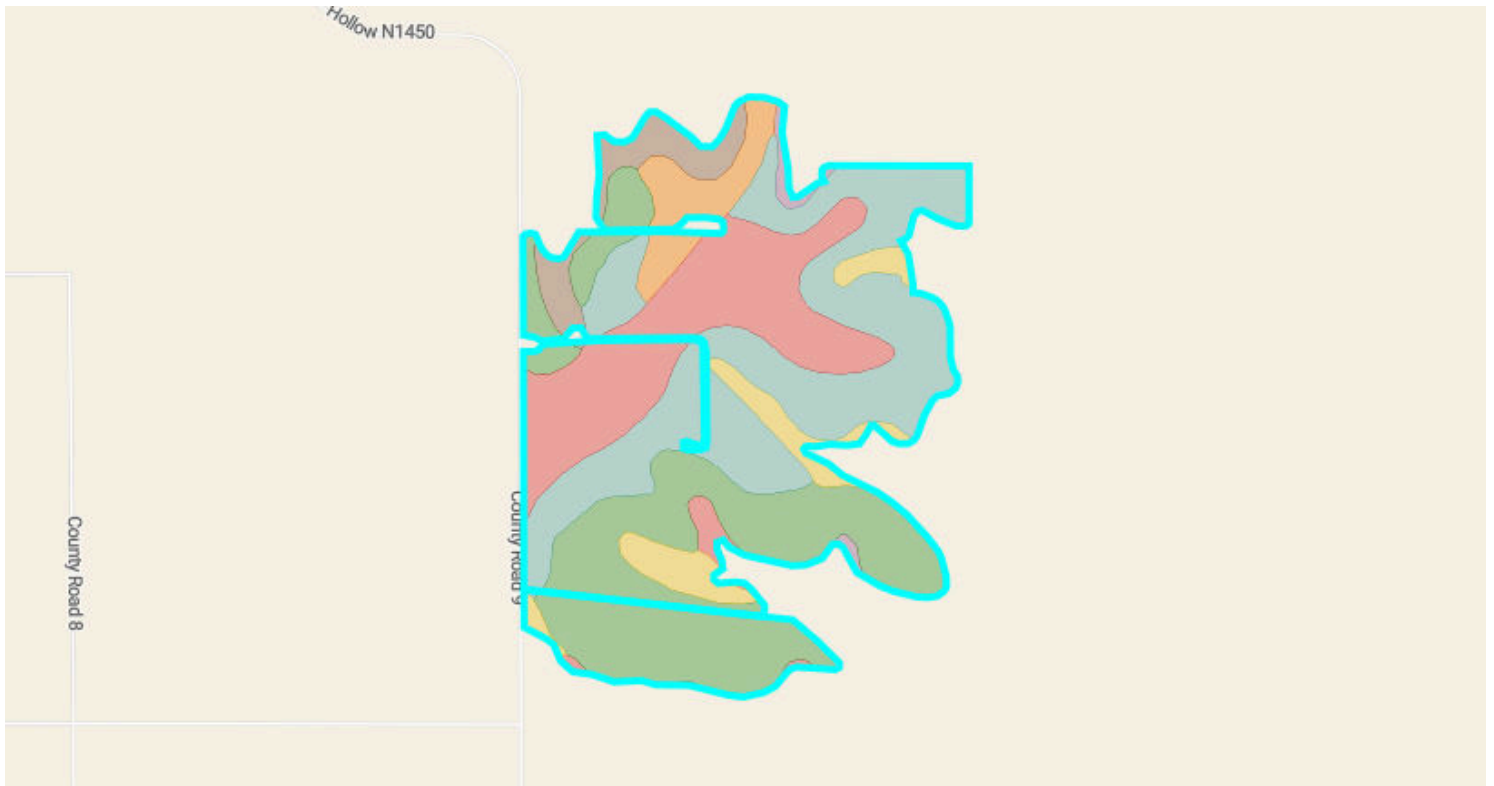
Locations
-

Acres
67.13

Soils



604.4 Acres, 2 Boundaries



49.7 / 100 NCCPI

	Code	Soil Description	% of Selection	Acres	Non-IRR Class	IRR Class	NCCPI
●	DaB	Darrouzett silty clay loam, 1 to 3 percent slopes	31.5%	190.4	3e	3e	50
●	OIB	Olton clay loam, 1 to 3 percent slopes	28.1%	170	3e	3e	49.5
●	DaA	Darrouzett silty clay loam, 0 to 1 percent slopes	19.4%	117.5	3e	2e	50
●	OIC	Olton clay loam, 3 to 5 percent slopes	6.4%	38.5	4e	4e	49
●	EsB	Estacado silty clay loam, 1 to 3 percent slopes	5.0%	30.5	3e	3e	45.6

Soils



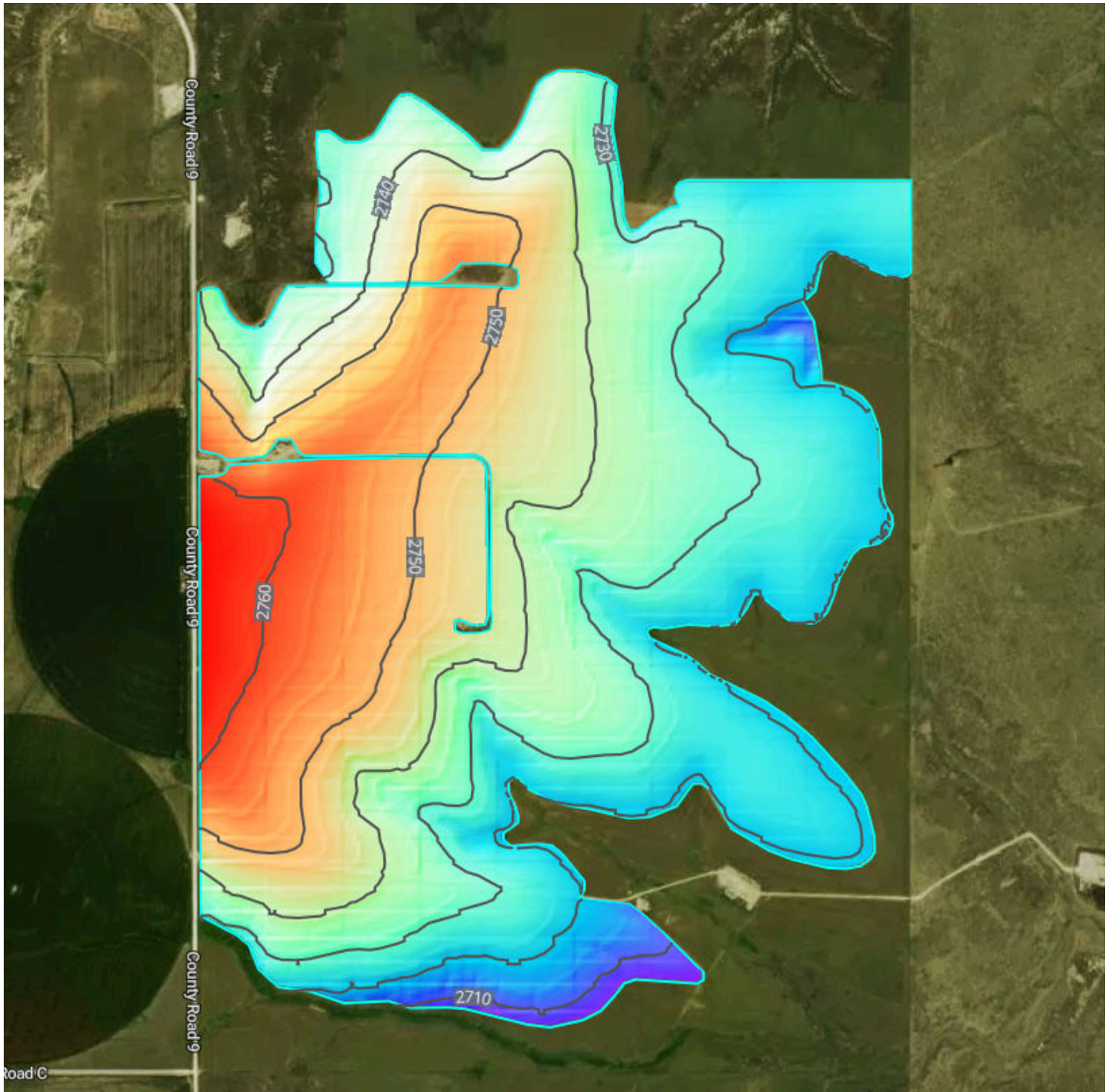
604.4 Acres, 2 Boundaries

	Code	Soil Description	% of Selection	Acres	Non-IRR Class	IRR Class	NCCPI
●	BoC	Balko-Oslo silt loams, 2 to 5 percent slopes	4.8%	29.1	3e	3e	56.6
●	DaC	Darrouzett silty clay loam, 3 to 5 percent slopes	2.5%	15.1	4e	4e	49.6
●	CsC	Catesby-Slapout loams, 3 to 5 percent slopes	1.2%	7.3	3e	3e	36.2
●	AcC	Acuff loam, 3 to 5 percent slopes	1.0%	6	4e	4e	46
●	BeD	Berda and Potter soils, 5 to 12 percent slopes	<0.1%	0	6e	--	39

Elevation



604.4 Acres, 2 Boundaries



2,703.8 feet

2,764.1 feet

Source: USGS 3 Meter Dem

Interval: 10 feet

Range: 60.3 feet

Min: 2703.8 feet

Max: 2764.1 feet

Slope: 1.7%

Min: 0%

Max: 7.8%

