

Oconee Station

±2.2 Acre Homesite In Walhalla, SC



REEDY
LAND CO.

Parcel Overview

00 Oconee Station Rd., Walhalla, SC 29691
Oconee County Tax ID: 083-00-02-003

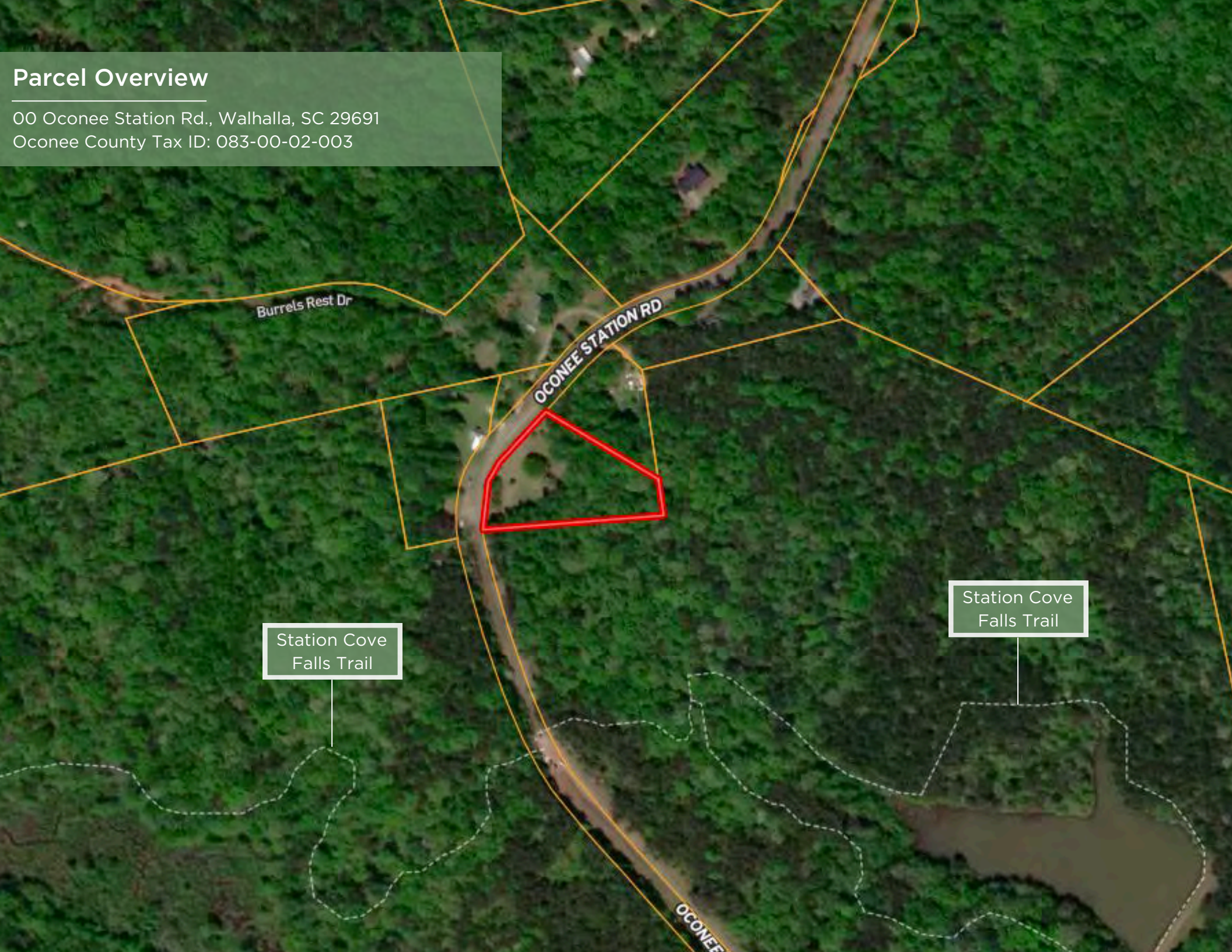
Burrels Rest Dr

OCONEE STATION RD

Station Cove Falls Trail

Station Cove Falls Trail

OCONEE



Executive Summary

00 Oconee Station Rd. | Walhalla, SC 29691

Property Highlights

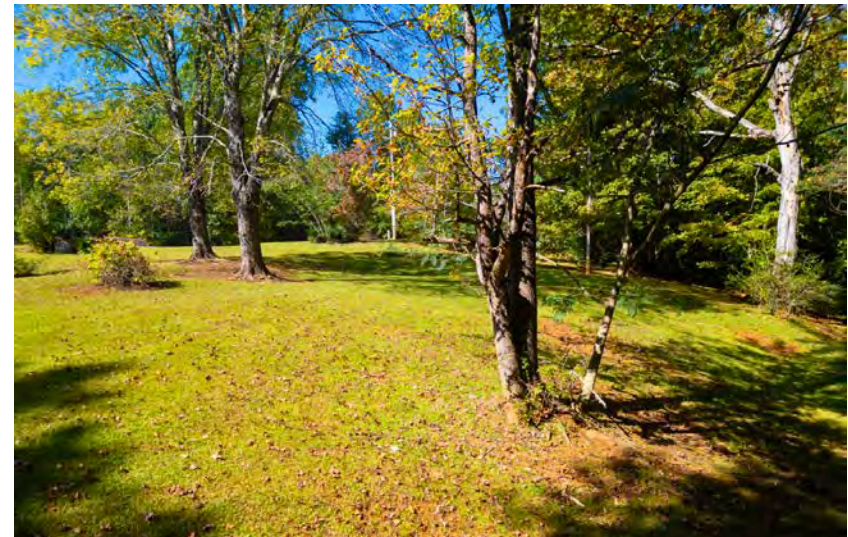
- 2.2 acres of rolling topography
- 0.6 acres cleared for a homesite
- Located next to Station Cove Falls Trail
- ±5 minutes off of Hwy 11
- ±7 minutes to Walhalla High School
- ±15 minutes from Downtown Walhalla
- ±20 minutes to Falls Creek Landing
- ±25 minutes from Oconee State Park
- Perc test results in hand

Offering Summary

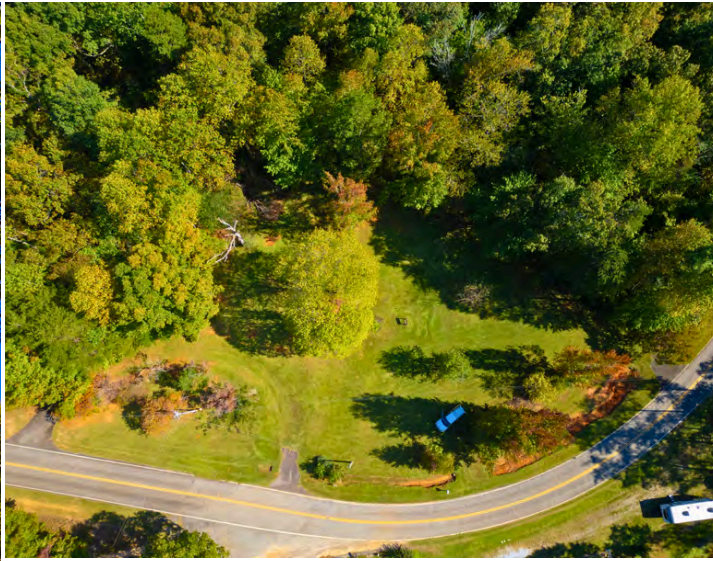
Lot Size: ±2.2 Acres

Sale Price: \$59,900

Acreage, taxes, utilities, and lot dimensions to be verified by Buyer and/or Buyer's agent



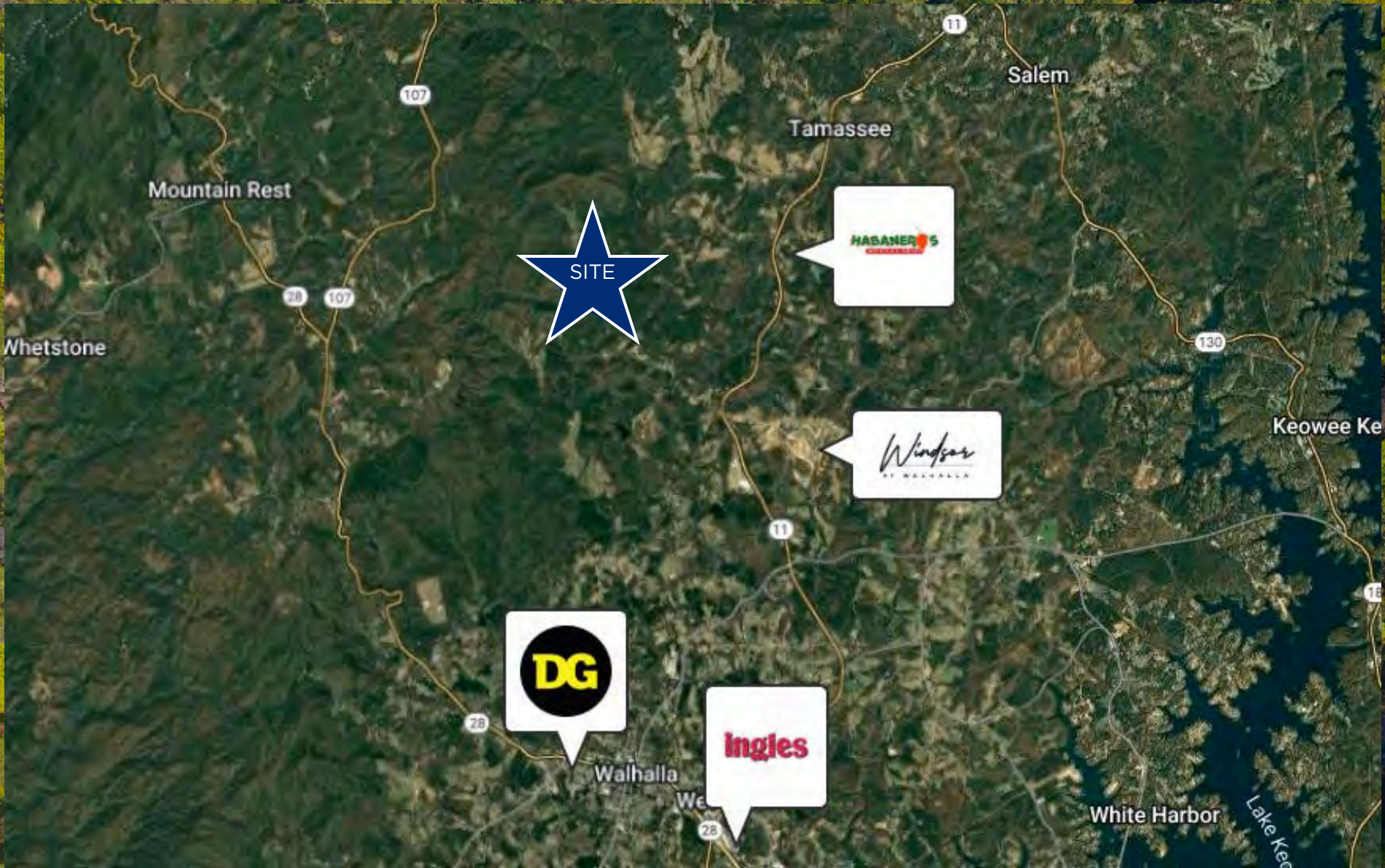
Property Photos



Retail Map

Walhalla, SC

REEDY



Contact Info

Reedy Land Co.

REEDY



Knox Duncan

Senior Associate

864-608-0029

kduncan@reedypg.com



Gabe Grammer

Senior Associate

803-205-3260

ggrammer@reedypg.com



Jonathan Monts

Associate

864-389-0299

jmonts@reedypg.com



Denton Warlick

Associate

864-238-7740

dwarlick@reedypg.com