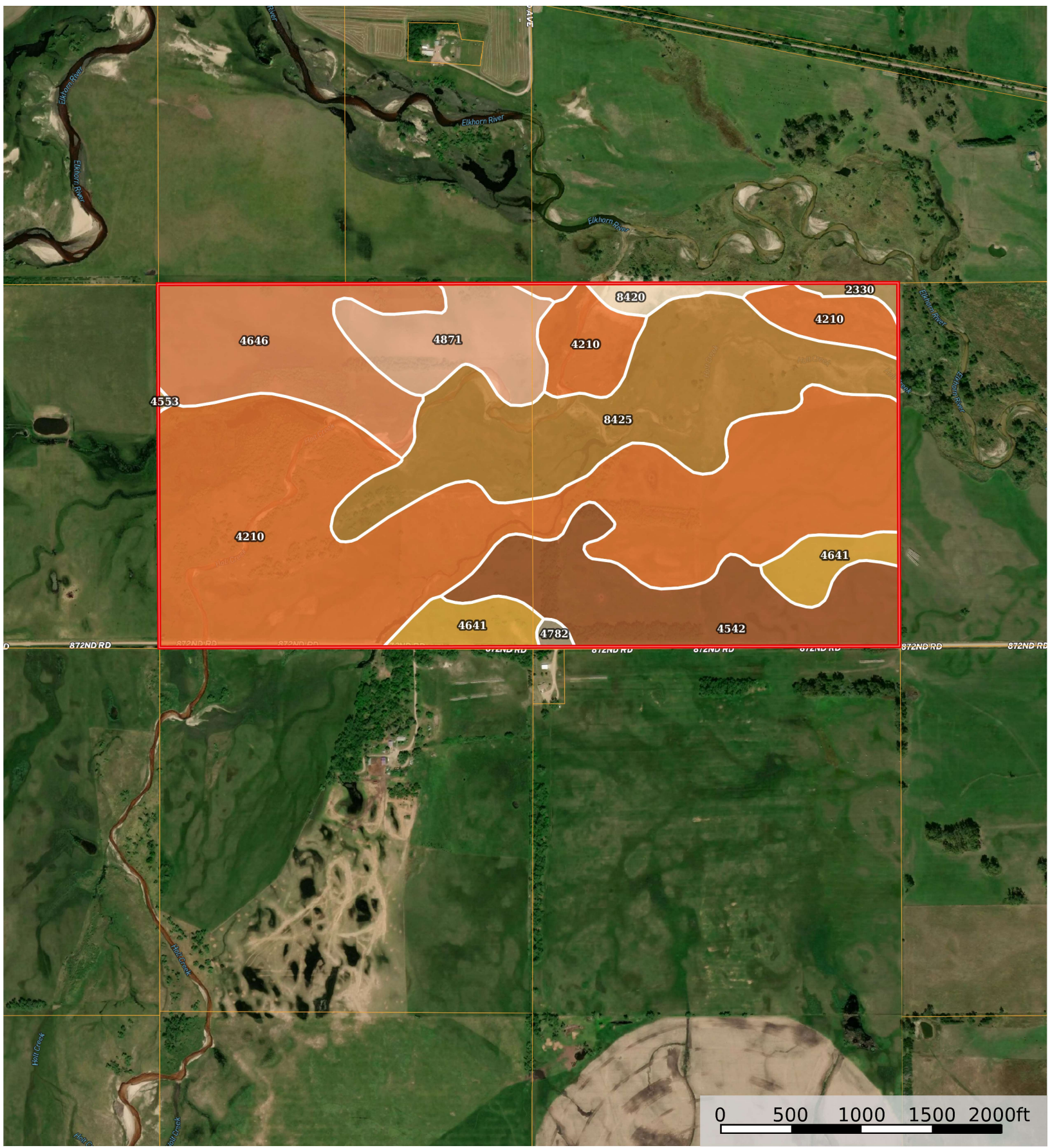


320± Acres, Holt County, Nebraska

Nebraska, AC +/-



 Boundary

|  Boundary 314.32 ac

SOIL CODE	SOIL DESCRIPTION	ACRES	%	CPI	NCCPI	CAP
4210	Almeria-Calamus complex, channeled, frequently flooded	142.4 1	45.31	5	11	5w
8425	Boel-Inavale complex, channeled, frequently flooded	59.89	19.05	0	17	6w
4542	Els-lpage complex, 0 to 3 percent slopes	37.1	11.8	0	26	6w
4646	lpage loamy fine sand, 0 to 3 percent slopes	35.01	11.14	54	31	4e
4871	Valentine-Dunday loamy fine sands, 0 to 3 percent slopes	19.64	6.25	0	34	4e
4641	lpage fine sand, 0 to 3 percent slopes	13.7	4.36	53	25	6e
8420	Boel loamy fine sand, occasionally flooded	3.66	1.16	0	28	4w
2330	Inavale fine sand, rarely flooded	1.76	0.56	0	27	6e
4782	Valentine fine sand, 0 to 3 percent slopes, moist	0.92	0.29	0	31	6e
4553	Elsmere loamy fine sand, 0 to 3 percent slopes	0.23	0.07	64	35	4w
TOTALS		314.3 2(*)	100%	10.64	18.55	5.17









(*) Total acres may differ in the second decimal compared to the sum of each acreage soil. This is due to a round error because we only show the acres of each soil with two decimal.

Capability Legend

Increased Limitations and Hazards

Decreased Adaptability and Freedom of Choice Users

Land, Capability

								
	1	2	3	4	5	6	7	8
'Wild Life'	•	•	•	•	•	•	•	•
Forestry	•	•	•	•	•	•	•	
Limited	•	•	•	•	•	•	•	
Moderate	•	•	•	•	•	•		
Intense	•	•	•	•	•			
Limited	•	•	•	•				
Moderate	•	•	•					
Intense	•	•						
Very Intense	•							

Grazing Cultivation

(c) climatic limitations (e) susceptibility to erosion

(s) soil limitations within the rooting zone (w) excess of water