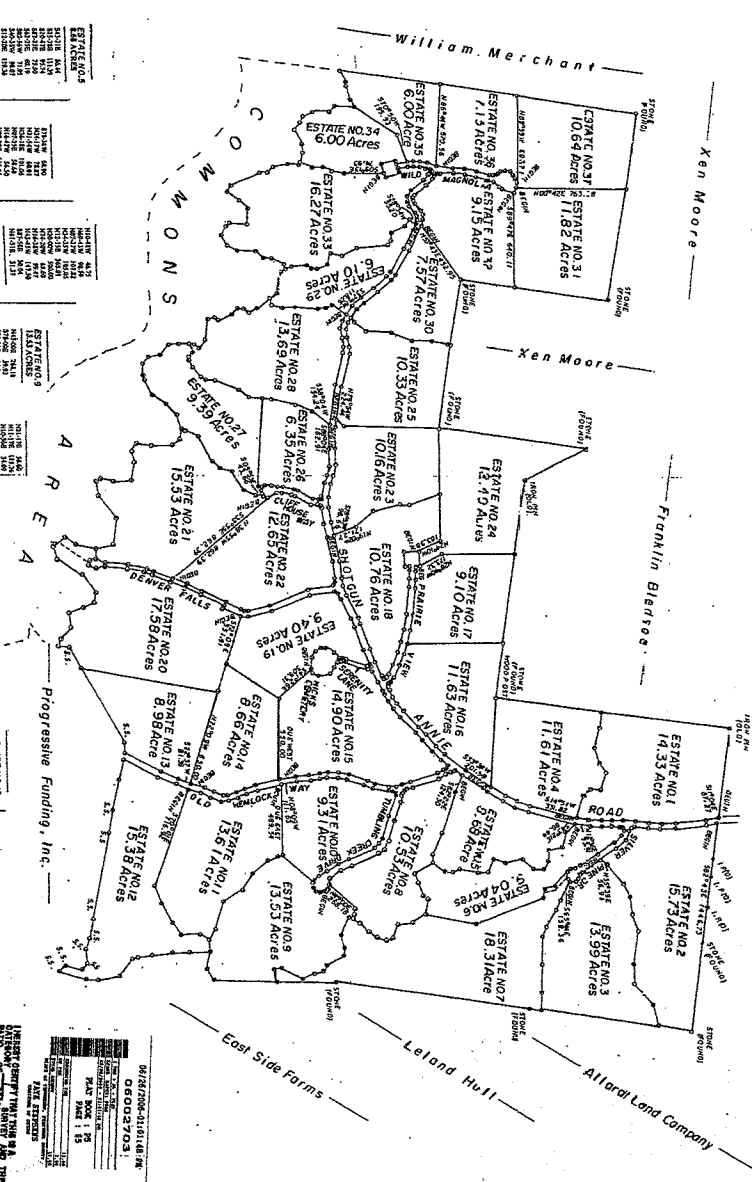


PLATEAU PROPERTIES
 CHATELAIN SUBDIVISION
 Allard Land Company



ESTATE NO. 1
 10.64 Acres
 ...
ESTATE NO. 2
 1.13 Acres
 ...
ESTATE NO. 3
 9.15 Acres
 ...
ESTATE NO. 4
 10.64 Acres
 ...
ESTATE NO. 5
 11.82 Acres
 ...
ESTATE NO. 6
 1.13 Acres
 ...
ESTATE NO. 7
 9.15 Acres
 ...
ESTATE NO. 8
 10.64 Acres
 ...
ESTATE NO. 9
 11.82 Acres
 ...
ESTATE NO. 10
 1.13 Acres
 ...
ESTATE NO. 11
 9.15 Acres
 ...
ESTATE NO. 12
 10.64 Acres
 ...
ESTATE NO. 13
 11.82 Acres
 ...
ESTATE NO. 14
 1.13 Acres
 ...
ESTATE NO. 15
 9.15 Acres
 ...
ESTATE NO. 16
 10.64 Acres
 ...
ESTATE NO. 17
 11.82 Acres
 ...
ESTATE NO. 18
 1.13 Acres
 ...
ESTATE NO. 19
 9.15 Acres
 ...
ESTATE NO. 20
 10.64 Acres
 ...
ESTATE NO. 21
 11.82 Acres
 ...
ESTATE NO. 22
 1.13 Acres
 ...
ESTATE NO. 23
 9.15 Acres
 ...
ESTATE NO. 24
 10.64 Acres
 ...
ESTATE NO. 25
 11.82 Acres
 ...
ESTATE NO. 26
 1.13 Acres
 ...
ESTATE NO. 27
 9.15 Acres
 ...
ESTATE NO. 28
 10.64 Acres
 ...
ESTATE NO. 29
 11.82 Acres
 ...
ESTATE NO. 30
 1.13 Acres
 ...
ESTATE NO. 31
 9.15 Acres
 ...
ESTATE NO. 32
 10.64 Acres
 ...
ESTATE NO. 33
 11.82 Acres
 ...
ESTATE NO. 34
 1.13 Acres
 ...
ESTATE NO. 35
 9.15 Acres
 ...

ESTATE NO. 36
 10.64 Acres
 ...
ESTATE NO. 37
 11.82 Acres
 ...
ESTATE NO. 38
 1.13 Acres
 ...
ESTATE NO. 39
 9.15 Acres
 ...
ESTATE NO. 40
 10.64 Acres
 ...
ESTATE NO. 41
 11.82 Acres
 ...
ESTATE NO. 42
 1.13 Acres
 ...
ESTATE NO. 43
 9.15 Acres
 ...
ESTATE NO. 44
 10.64 Acres
 ...
ESTATE NO. 45
 11.82 Acres
 ...
ESTATE NO. 46
 1.13 Acres
 ...
ESTATE NO. 47
 9.15 Acres
 ...
ESTATE NO. 48
 10.64 Acres
 ...
ESTATE NO. 49
 11.82 Acres
 ...
ESTATE NO. 50
 1.13 Acres
 ...
ESTATE NO. 51
 9.15 Acres
 ...
ESTATE NO. 52
 10.64 Acres
 ...
ESTATE NO. 53
 11.82 Acres
 ...
ESTATE NO. 54
 1.13 Acres
 ...
ESTATE NO. 55
 9.15 Acres
 ...
ESTATE NO. 56
 10.64 Acres
 ...
ESTATE NO. 57
 11.82 Acres
 ...
ESTATE NO. 58
 1.13 Acres
 ...
ESTATE NO. 59
 9.15 Acres
 ...
ESTATE NO. 60
 10.64 Acres
 ...
ESTATE NO. 61
 11.82 Acres
 ...
ESTATE NO. 62
 1.13 Acres
 ...
ESTATE NO. 63
 9.15 Acres
 ...
ESTATE NO. 64
 10.64 Acres
 ...
ESTATE NO. 65
 11.82 Acres
 ...
ESTATE NO. 66
 1.13 Acres
 ...
ESTATE NO. 67
 9.15 Acres
 ...
ESTATE NO. 68
 10.64 Acres
 ...
ESTATE NO. 69
 11.82 Acres
 ...
ESTATE NO. 70
 1.13 Acres
 ...
ESTATE NO. 71
 9.15 Acres
 ...
ESTATE NO. 72
 10.64 Acres
 ...
ESTATE NO. 73
 11.82 Acres
 ...
ESTATE NO. 74
 1.13 Acres
 ...
ESTATE NO. 75
 9.15 Acres
 ...
ESTATE NO. 76
 10.64 Acres
 ...
ESTATE NO. 77
 11.82 Acres
 ...
ESTATE NO. 78
 1.13 Acres
 ...
ESTATE NO. 79
 9.15 Acres
 ...
ESTATE NO. 80
 10.64 Acres
 ...
ESTATE NO. 81
 11.82 Acres
 ...
ESTATE NO. 82
 1.13 Acres
 ...
ESTATE NO. 83
 9.15 Acres
 ...
ESTATE NO. 84
 10.64 Acres
 ...
ESTATE NO. 85
 11.82 Acres
 ...
ESTATE NO. 86
 1.13 Acres
 ...
ESTATE NO. 87
 9.15 Acres
 ...
ESTATE NO. 88
 10.64 Acres
 ...
ESTATE NO. 89
 11.82 Acres
 ...
ESTATE NO. 90
 1.13 Acres
 ...
ESTATE NO. 91
 9.15 Acres
 ...
ESTATE NO. 92
 10.64 Acres
 ...
ESTATE NO. 93
 11.82 Acres
 ...
ESTATE NO. 94
 1.13 Acres
 ...
ESTATE NO. 95
 9.15 Acres
 ...
ESTATE NO. 96
 10.64 Acres
 ...
ESTATE NO. 97
 11.82 Acres
 ...
ESTATE NO. 98
 1.13 Acres
 ...
ESTATE NO. 99
 9.15 Acres
 ...
ESTATE NO. 100
 10.64 Acres
 ...

06/24/2008-01:01:48 PM
 060029031

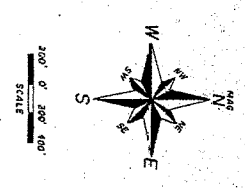
DATE	TIME	USER
06/24/2008	01:01:48 PM	060029031

FOR SURVEY COMPANY
 J. E. D. O.
 J. E. D. O. & ASSOCIATES
 1000 N. 11th St., Suite 100
 Oklahoma City, Oklahoma 73102
 (405) 241-1111
 www.jedo.com



River Park on the Clear Fork

ESTATE NO. 20
 11.82 Acres
 ...
ESTATE NO. 21
 1.13 Acres
 ...
ESTATE NO. 22
 9.15 Acres
 ...
ESTATE NO. 23
 10.64 Acres
 ...
ESTATE NO. 24
 11.82 Acres
 ...
ESTATE NO. 25
 1.13 Acres
 ...
ESTATE NO. 26
 9.15 Acres
 ...
ESTATE NO. 27
 10.64 Acres
 ...
ESTATE NO. 28
 11.82 Acres
 ...
ESTATE NO. 29
 1.13 Acres
 ...
ESTATE NO. 30
 9.15 Acres
 ...
ESTATE NO. 31
 10.64 Acres
 ...
ESTATE NO. 32
 11.82 Acres
 ...
ESTATE NO. 33
 1.13 Acres
 ...
ESTATE NO. 34
 9.15 Acres
 ...
ESTATE NO. 35
 10.64 Acres
 ...
ESTATE NO. 36
 11.82 Acres
 ...
ESTATE NO. 37
 1.13 Acres
 ...
ESTATE NO. 38
 9.15 Acres
 ...
ESTATE NO. 39
 10.64 Acres
 ...
ESTATE NO. 40
 11.82 Acres
 ...
ESTATE NO. 41
 1.13 Acres
 ...
ESTATE NO. 42
 9.15 Acres
 ...
ESTATE NO. 43
 10.64 Acres
 ...
ESTATE NO. 44
 11.82 Acres
 ...
ESTATE NO. 45
 1.13 Acres
 ...
ESTATE NO. 46
 9.15 Acres
 ...
ESTATE NO. 47
 10.64 Acres
 ...
ESTATE NO. 48
 11.82 Acres
 ...
ESTATE NO. 49
 1.13 Acres
 ...
ESTATE NO. 50
 9.15 Acres
 ...
ESTATE NO. 51
 10.64 Acres
 ...
ESTATE NO. 52
 11.82 Acres
 ...
ESTATE NO. 53
 1.13 Acres
 ...
ESTATE NO. 54
 9.15 Acres
 ...
ESTATE NO. 55
 10.64 Acres
 ...
ESTATE NO. 56
 11.82 Acres
 ...
ESTATE NO. 57
 1.13 Acres
 ...
ESTATE NO. 58
 9.15 Acres
 ...
ESTATE NO. 59
 10.64 Acres
 ...
ESTATE NO. 60
 11.82 Acres
 ...
ESTATE NO. 61
 1.13 Acres
 ...
ESTATE NO. 62
 9.15 Acres
 ...
ESTATE NO. 63
 10.64 Acres
 ...
ESTATE NO. 64
 11.82 Acres
 ...
ESTATE NO. 65
 1.13 Acres
 ...
ESTATE NO. 66
 9.15 Acres
 ...
ESTATE NO. 67
 10.64 Acres
 ...
ESTATE NO. 68
 11.82 Acres
 ...
ESTATE NO. 69
 1.13 Acres
 ...
ESTATE NO. 70
 9.15 Acres
 ...
ESTATE NO. 71
 10.64 Acres
 ...
ESTATE NO. 72
 11.82 Acres
 ...
ESTATE NO. 73
 1.13 Acres
 ...
ESTATE NO. 74
 9.15 Acres
 ...
ESTATE NO. 75
 10.64 Acres
 ...
ESTATE NO. 76
 11.82 Acres
 ...
ESTATE NO. 77
 1.13 Acres
 ...
ESTATE NO. 78
 9.15 Acres
 ...
ESTATE NO. 79
 10.64 Acres
 ...
ESTATE NO. 80
 11.82 Acres
 ...
ESTATE NO. 81
 1.13 Acres
 ...
ESTATE NO. 82
 9.15 Acres
 ...
ESTATE NO. 83
 10.64 Acres
 ...
ESTATE NO. 84
 11.82 Acres
 ...
ESTATE NO. 85
 1.13 Acres
 ...
ESTATE NO. 86
 9.15 Acres
 ...
ESTATE NO. 87
 10.64 Acres
 ...
ESTATE NO. 88
 11.82 Acres
 ...
ESTATE NO. 89
 1.13 Acres
 ...
ESTATE NO. 90
 9.15 Acres
 ...
ESTATE NO. 91
 10.64 Acres
 ...
ESTATE NO. 92
 11.82 Acres
 ...
ESTATE NO. 93
 1.13 Acres
 ...
ESTATE NO. 94
 9.15 Acres
 ...
ESTATE NO. 95
 10.64 Acres
 ...
ESTATE NO. 96
 11.82 Acres
 ...
ESTATE NO. 97
 1.13 Acres
 ...
ESTATE NO. 98
 9.15 Acres
 ...
ESTATE NO. 99
 10.64 Acres
 ...
ESTATE NO. 100
 11.82 Acres
 ...



BEGIN
N53°43'E 452.0

ESTATE NO. 30
7.57 Acres

180°34'W
55.20

BEGIN

ESTATE
NO. 29
6.9 Acres

ST. 187
N 67° 21' W
BEG IN

TE NO. 33
27 Acres

ESTATE
13.6

