

CERTIFICATION OF OWNERSHIP AND DEDICATION
 I, the undersigned, hereby certify that I am (we and the owner(s) of this property shown and described hereon and/or (we) hereby adopt this plan of subdivision with my (our) free consent and dedicate all streets, alleys, walks, park or other public ways and open spaces to public or private use as noted.

Owner: [Signature] Date: 7-9-2021
 Owner: [Signature] Date: 7-9-2021
 Surveyor: [Signature] Date: 7-9-2021

CERTIFICATION OF APPROVAL OF WATER SYSTEMS

I certify that the water system installed, or proposed for installation, fully meets the requirements of the Tennessee Department of Environment and Conservation, and is hereby approved as shown on a plan of record or other assurance of record. The Tennessee Department of Environment and Conservation has been notified of this approval and its approval is provided in the case of default.

Authorized Representative of Jefferson County Communications District:
[Signature] Date: 7-9-2021

CERTIFICATION OF STREET NAMES

I certify that all street names on this plan have been reviewed and approved by the Jefferson County Communications District.

Authorized Representative of Jefferson County Communications District:
[Signature] Date: 7-9-2021

CERTIFICATION OF APPROVAL OF ELECTRIC LINES

I certify that the electric lines shown on this plan have been reviewed and approved by the Tennessee Department of Transportation, and is hereby approved as shown on a plan of record or other assurance of record. The Tennessee Department of Transportation has been notified of this approval and its approval is provided in the case of default.

Authorized Representative of Tennessee Department of Transportation:
[Signature] Date: 7-12-2021

CERTIFICATION OF APPROVAL OF SUBSURFACE SEWAGE DISPOSAL

I certify that all lots in this subdivision are approved for subsurface sewage disposal system (sewer) suitable for houses containing a minimum of two (2) bedrooms.

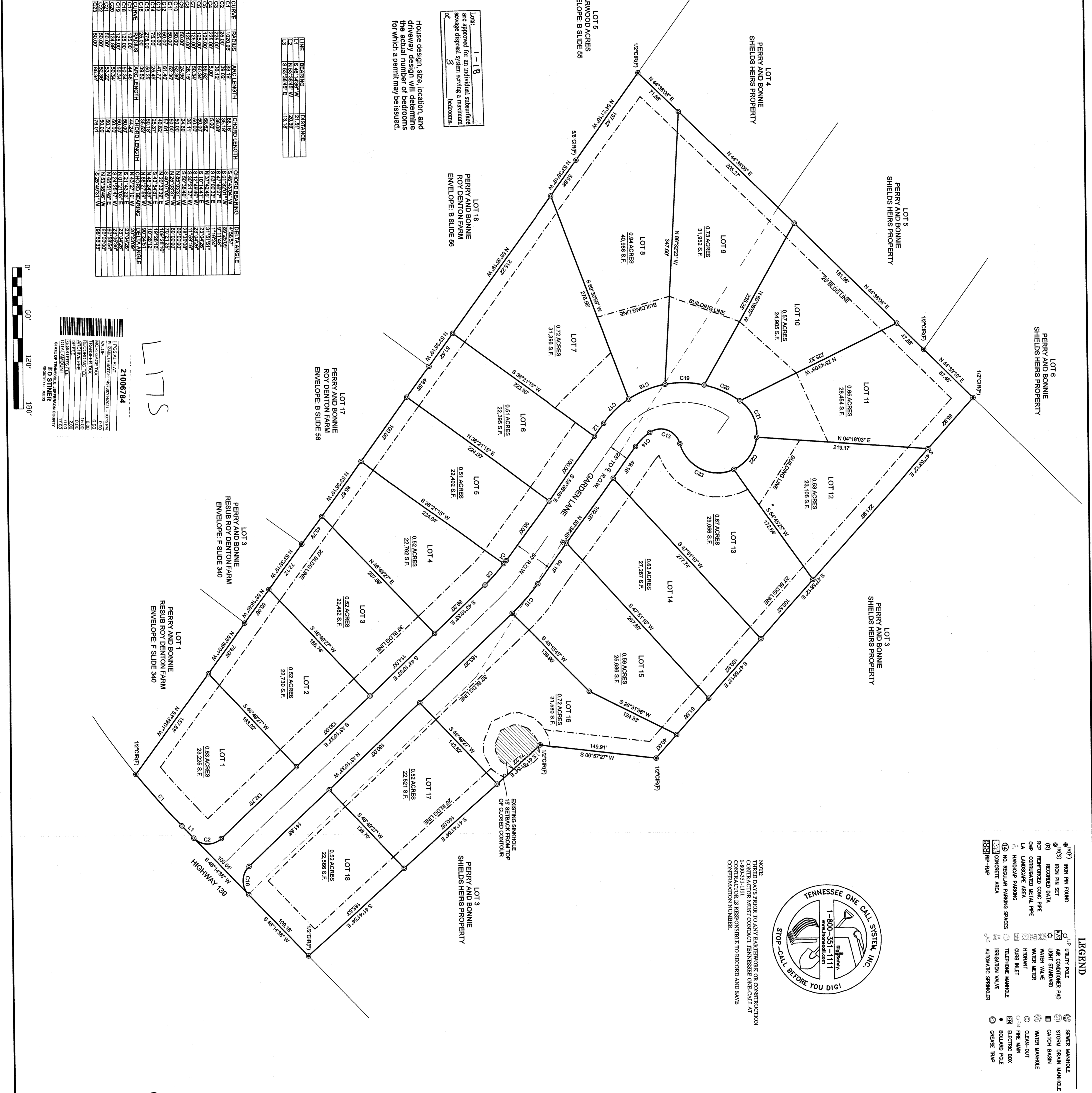
Jefferson County Health Department:
[Signature] Date: 7-13-21

CERTIFICATION OF APPROVAL FOR RECORDING

I certify that this plan has been found to comply with the subdivision requirements for the City of Dandridge with the exception of such variances, if any, which are noted in the minutes of the planning commission. All improvements have been installed, or an acceptable plan has been prepared in order to assure completion. This plan is approved for recording in the Register of Deeds.

Secretary, JCRPC:
[Signature] Date: 7-13-21

ROBERT G. CAMPBELL & ASSOCIATES, L.P.
 CONSULTING ENGINEERS
 KNOXVILLE, PIGEON FORGE & SEVERVILLE, TENNESSEE
 621 Wall Street
 Sevierville, Tennessee 37862
 Phone: (865) 429-4883 FAX: (865) 429-4884



LINE	BEARING	DISTANCE
C1	N 44° 30' 00" E	131.18
C2	S 89° 59' 59" W	131.18
C3	N 44° 30' 00" E	131.18
C4	S 89° 59' 59" W	131.18
C5	N 44° 30' 00" E	131.18
C6	S 89° 59' 59" W	131.18
C7	N 44° 30' 00" E	131.18
C8	S 89° 59' 59" W	131.18
C9	N 44° 30' 00" E	131.18
C10	S 89° 59' 59" W	131.18
C11	N 44° 30' 00" E	131.18
C12	S 89° 59' 59" W	131.18
C13	N 44° 30' 00" E	131.18
C14	S 89° 59' 59" W	131.18
C15	N 44° 30' 00" E	131.18
C16	S 89° 59' 59" W	131.18
C17	N 44° 30' 00" E	131.18
C18	S 89° 59' 59" W	131.18
C19	N 44° 30' 00" E	131.18
C20	S 89° 59' 59" W	131.18
C21	N 44° 30' 00" E	131.18
C22	S 89° 59' 59" W	131.18
C23	N 44° 30' 00" E	131.18
C24	S 89° 59' 59" W	131.18
C25	N 44° 30' 00" E	131.18
C26	S 89° 59' 59" W	131.18
C27	N 44° 30' 00" E	131.18
C28	S 89° 59' 59" W	131.18
C29	N 44° 30' 00" E	131.18
C30	S 89° 59' 59" W	131.18
C31	N 44° 30' 00" E	131.18
C32	S 89° 59' 59" W	131.18
C33	N 44° 30' 00" E	131.18
C34	S 89° 59' 59" W	131.18
C35	N 44° 30' 00" E	131.18
C36	S 89° 59' 59" W	131.18
C37	N 44° 30' 00" E	131.18
C38	S 89° 59' 59" W	131.18
C39	N 44° 30' 00" E	131.18
C40	S 89° 59' 59" W	131.18
C41	N 44° 30' 00" E	131.18
C42	S 89° 59' 59" W	131.18
C43	N 44° 30' 00" E	131.18
C44	S 89° 59' 59" W	131.18
C45	N 44° 30' 00" E	131.18
C46	S 89° 59' 59" W	131.18
C47	N 44° 30' 00" E	131.18
C48	S 89° 59' 59" W	131.18
C49	N 44° 30' 00" E	131.18
C50	S 89° 59' 59" W	131.18
C51	N 44° 30' 00" E	131.18
C52	S 89° 59' 59" W	131.18
C53	N 44° 30' 00" E	131.18
C54	S 89° 59' 59" W	131.18
C55	N 44° 30' 00" E	131.18
C56	S 89° 59' 59" W	131.18
C57	N 44° 30' 00" E	131.18
C58	S 89° 59' 59" W	131.18
C59	N 44° 30' 00" E	131.18
C60	S 89° 59' 59" W	131.18
C61	N 44° 30' 00" E	131.18
C62	S 89° 59' 59" W	131.18
C63	N 44° 30' 00" E	131.18
C64	S 89° 59' 59" W	131.18
C65	N 44° 30' 00" E	131.18
C66	S 89° 59' 59" W	131.18
C67	N 44° 30' 00" E	131.18
C68	S 89° 59' 59" W	131.18
C69	N 44° 30' 00" E	131.18
C70	S 89° 59' 59" W	131.18
C71	N 44° 30' 00" E	131.18
C72	S 89° 59' 59" W	131.18
C73	N 44° 30' 00" E	131.18
C74	S 89° 59' 59" W	131.18
C75	N 44° 30' 00" E	131.18
C76	S 89° 59' 59" W	131.18
C77	N 44° 30' 00" E	131.18
C78	S 89° 59' 59" W	131.18
C79	N 44° 30' 00" E	131.18
C80	S 89° 59' 59" W	131.18
C81	N 44° 30' 00" E	131.18
C82	S 89° 59' 59" W	131.18
C83	N 44° 30' 00" E	131.18
C84	S 89° 59' 59" W	131.18
C85	N 44° 30' 00" E	131.18
C86	S 89° 59' 59" W	131.18
C87	N 44° 30' 00" E	131.18
C88	S 89° 59' 59" W	131.18
C89	N 44° 30' 00" E	131.18
C90	S 89° 59' 59" W	131.18
C91	N 44° 30' 00" E	131.18
C92	S 89° 59' 59" W	131.18
C93	N 44° 30' 00" E	131.18
C94	S 89° 59' 59" W	131.18
C95	N 44° 30' 00" E	131.18
C96	S 89° 59' 59" W	131.18
C97	N 44° 30' 00" E	131.18
C98	S 89° 59' 59" W	131.18
C99	N 44° 30' 00" E	131.18
C100	S 89° 59' 59" W	131.18

LINE	BEARING	DISTANCE
L1	N 44° 30' 00" E	131.18
L2	S 89° 59' 59" W	131.18
L3	N 44° 30' 00" E	131.18
L4	S 89° 59' 59" W	131.18
L5	N 44° 30' 00" E	131.18
L6	S 89° 59' 59" W	131.18
L7	N 44° 30' 00" E	131.18
L8	S 89° 59' 59" W	131.18
L9	N 44° 30' 00" E	131.18
L10	S 89° 59' 59" W	131.18
L11	N 44° 30' 00" E	131.18
L12	S 89° 59' 59" W	131.18
L13	N 44° 30' 00" E	131.18
L14	S 89° 59' 59" W	131.18
L15	N 44° 30' 00" E	131.18
L16	S 89° 59' 59" W	131.18
L17	N 44° 30' 00" E	131.18
L18	S 89° 59' 59" W	131.18
L19	N 44° 30' 00" E	131.18
L20	S 89° 59' 59" W	131.18
L21	N 44° 30' 00" E	131.18
L22	S 89° 59' 59" W	131.18
L23	N 44° 30' 00" E	131.18
L24	S 89° 59' 59" W	131.18
L25	N 44° 30' 00" E	131.18
L26	S 89° 59' 59" W	131.18
L27	N 44° 30' 00" E	131.18
L28	S 89° 59' 59" W	131.18
L29	N 44° 30' 00" E	131.18
L30	S 89° 59' 59" W	131.18
L31	N 44° 30' 00" E	131.18
L32	S 89° 59' 59" W	131.18
L33	N 44° 30' 00" E	131.18
L34	S 89° 59' 59" W	131.18
L35	N 44° 30' 00" E	131.18
L36	S 89° 59' 59" W	131.18
L37	N 44° 30' 00" E	131.18
L38	S 89° 59' 59" W	131.18
L39	N 44° 30' 00" E	131.18
L40	S 89° 59' 59" W	131.18
L41	N 44° 30' 00" E	131.18
L42	S 89° 59' 59" W	131.18
L43	N 44° 30' 00" E	131.18
L44	S 89° 59' 59" W	131.18
L45	N 44° 30' 00" E	131.18
L46	S 89° 59' 59" W	131.18
L47	N 44° 30' 00" E	131.18
L48	S 89° 59' 59" W	131.18
L49	N 44° 30' 00" E	131.18
L50	S 89° 59' 59" W	131.18
L51	N 44° 30' 00" E	131.18
L52	S 89° 59' 59" W	131.18
L53	N 44° 30' 00" E	131.18
L54	S 89° 59' 59" W	131.18
L55	N 44° 30' 00" E	131.18
L56	S 89° 59' 59" W	131.18
L57	N 44° 30' 00" E	131.18
L58	S 89° 59' 59" W	131.18
L59	N 44° 30' 00" E	131.18
L60	S 89° 59' 59" W	131.18
L61	N 44° 30' 00" E	131.18
L62	S 89° 59' 59" W	131.18
L63	N 44° 30' 00" E	131.18
L64	S 89° 59' 59" W	131.18
L65	N 44° 30' 00" E	131.18
L66	S 89° 59' 59" W	131.18
L67	N 44° 30' 00" E	131.18
L68	S 89° 59' 59" W	131.18
L69	N 44° 30' 00" E	131.18
L70	S 89° 59' 59" W	131.18
L71	N 44° 30' 00" E	131.18
L72	S 89° 59' 59" W	131.18
L73	N 44° 30' 00" E	131.18
L74	S 89° 59' 59" W	131.18
L75	N 44° 30' 00" E	131.18
L76	S 89° 59' 59" W	131.18
L77	N 44° 30' 00" E	131.18
L78	S 89° 59' 59" W	131.18
L79	N 44° 30' 00" E	131.18
L80	S 89° 59' 59" W	131.18
L81	N 44° 30' 00" E	131.18
L82	S 89° 59' 59" W	131.18
L83	N 44° 30' 00" E	131.18
L84	S 89° 59' 59" W	131.18
L85	N 44° 30' 00" E	131.18
L86	S 89° 59' 59" W	131.18
L87	N 44° 30' 00" E	131.18
L88	S 89° 59' 59" W	131.18
L89	N 44° 30' 00" E	131.18
L90	S 89° 59' 59" W	131.18
L91	N 44° 30' 00" E	131.18
L92	S 89° 59' 59" W	131.18
L93	N 44° 30' 00" E	131.18
L94	S 89° 59' 59" W	131.18
L95	N 44° 30' 00" E	131.18
L96	S 89° 59' 59" W	131.18
L97	N 44° 30' 00" E	131.18
L98	S 89° 59' 59" W	131.18
L99	N 44° 30' 00" E	131.18
L100	S 89° 59' 59" W	131.18

LINE	BEARING	DISTANCE
L1	N 44° 30' 00" E	131.18
L2	S 89° 59' 59" W	131.18
L3	N 44° 30' 00" E	131.18
L4	S 89° 59' 59" W	131.18
L5	N 44° 30' 00" E	131.18
L6	S 89° 59' 59" W	131.18
L7	N 44° 30' 00" E	131.18
L8	S 89° 59' 59" W	131.18
L9	N 44° 30' 00" E	131.18
L10	S 89° 59' 59" W	131.18
L11	N 44° 30' 00" E	131.18
L12	S 89° 59' 59" W	131.18
L13	N 44° 30' 00" E	131.18
L14	S 89° 59' 59" W	131.18
L15	N 44° 30' 00" E	131.18
L16	S 89° 59' 59" W	131.18
L17	N 44° 30' 00" E	131.18
L18	S 89° 59' 59" W	131.18
L19	N 44° 30' 00" E	131.18
L20	S 89° 59' 59" W	131.18
L21	N 44° 30' 00" E	131.18
L22	S 89° 59' 59" W	131.18
L23	N 44° 30' 00" E	131.18
L24	S 89° 59' 59" W	131.18
L25	N 44° 30' 00" E	131.18
L26	S 89° 59' 59" W	131.18
L27	N 44° 30' 00" E	131.18
L28	S 89° 59' 59" W	131.18
L29	N 44° 30' 00" E	131.18
L30	S 89° 59' 59" W	131.18
L31	N 44° 30' 00" E	131.18
L32	S 89° 59' 59" W	131.18
L33	N 44° 30' 00" E	131.18
L34	S 89° 59' 59" W	131.18
L35	N 44° 30' 00" E	131.18
L36	S 89° 59' 59" W	131.18
L37	N 44° 30' 00" E	131.18
L38	S 89° 59' 59" W	131.18
L39	N 44° 30' 00" E	131.18
L40	S 89° 59' 59" W	131.18
L41	N 44° 30' 00" E	131.18
L42	S 89° 59' 59" W	131.18
L43	N 44° 30' 00" E	131.18
L44	S 89° 59' 59" W	131.18
L45	N 44° 30' 00" E	131.18
L46	S 89° 59' 59" W	131.18
L47	N 44° 30' 00" E	131.18
L48	S 89° 59' 59" W	131.18
L49	N 44° 30' 00" E	131.18
L50	S 89° 59' 59" W	131.18
L51	N 44° 30' 00" E	131.18
L52	S 89° 59' 59" W	131.18
L53	N 44° 30' 00" E	131.18
L54	S 89° 59' 59" W	131.18
L55	N 44° 30' 00" E	131.18
L56	S 89° 59' 59" W	131.18
L57	N 44° 30' 00" E	131.18
L58	S 89° 59' 59" W	131.18
L59	N 44° 30' 00" E	131.18
L60	S 89° 59' 59" W	131.18
L61	N 44° 30' 00" E	