

Sunset Ridge

±53.87 Acre Foothill Mountain Tract



REEDY
LAND CO.

Property Map

Meece Mill Rd, Pickens, SC 29671
Pickens County Tax ID: R0093845



Executive Summary

Meece Mill Rd | Pickens, SC 29671

Property Highlights

- ±6 acre cleared homesite
- Mostly Hardwoods
- ±630 feet of road frontage
- Over half a mile of trails
- Powerline easement
- Mountain Views

Location Highlights

Municipal Proximities:

- ±10 minutes to Pickens
- ±20 minutes to Easley
- ±35-40 minutes to Clemson, Brevard, and Greenville

Amenity Proximities

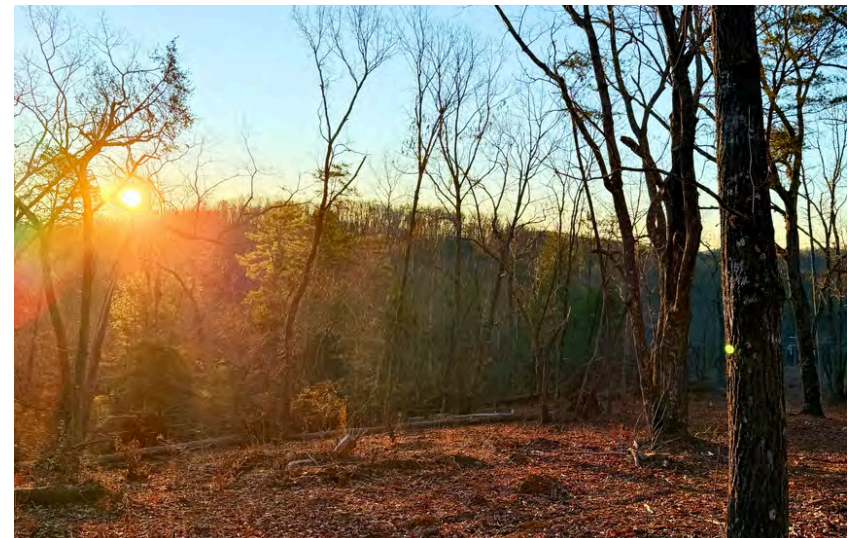
- ±10 minutes to Table Rock State Park
- ±20 minutes to The Reserve at Lake Keowee
- ±20 minutes to Devils Fork State Park, Lake Jocassee

Offering Summary

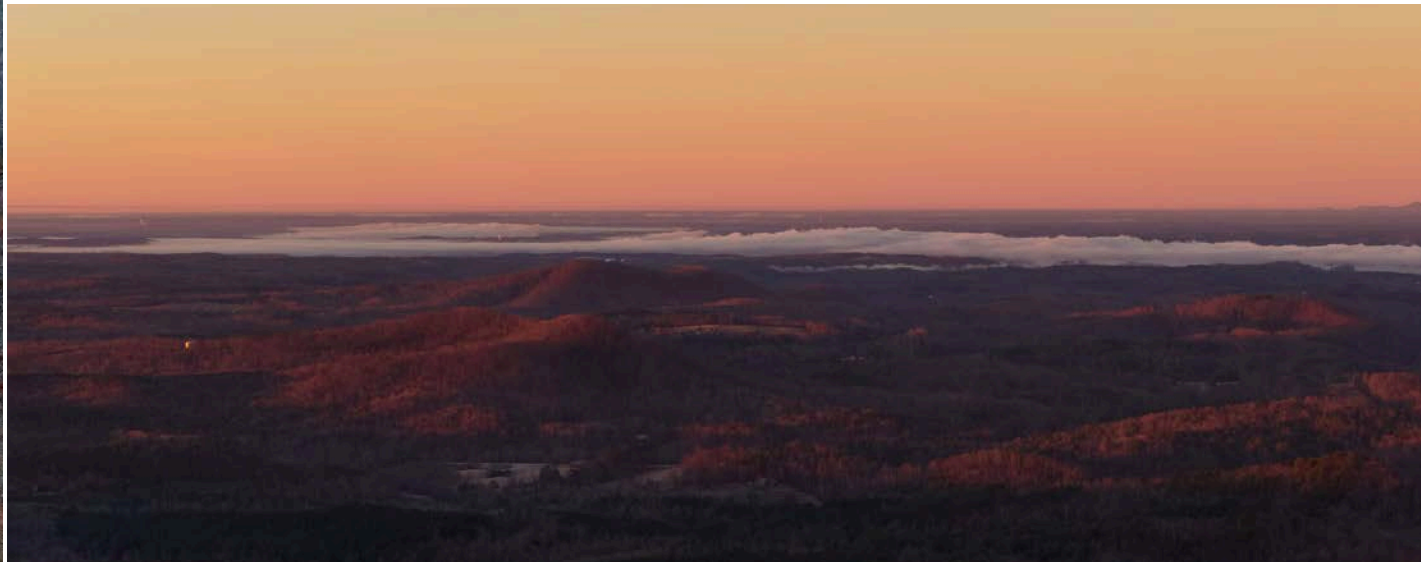
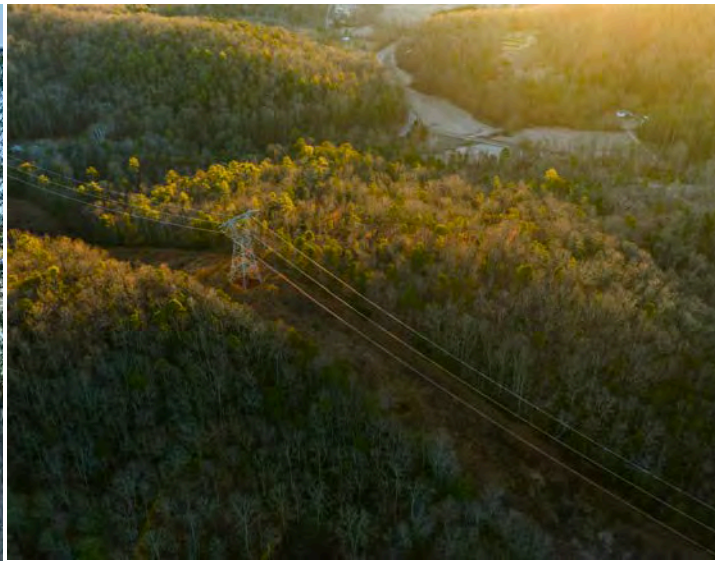
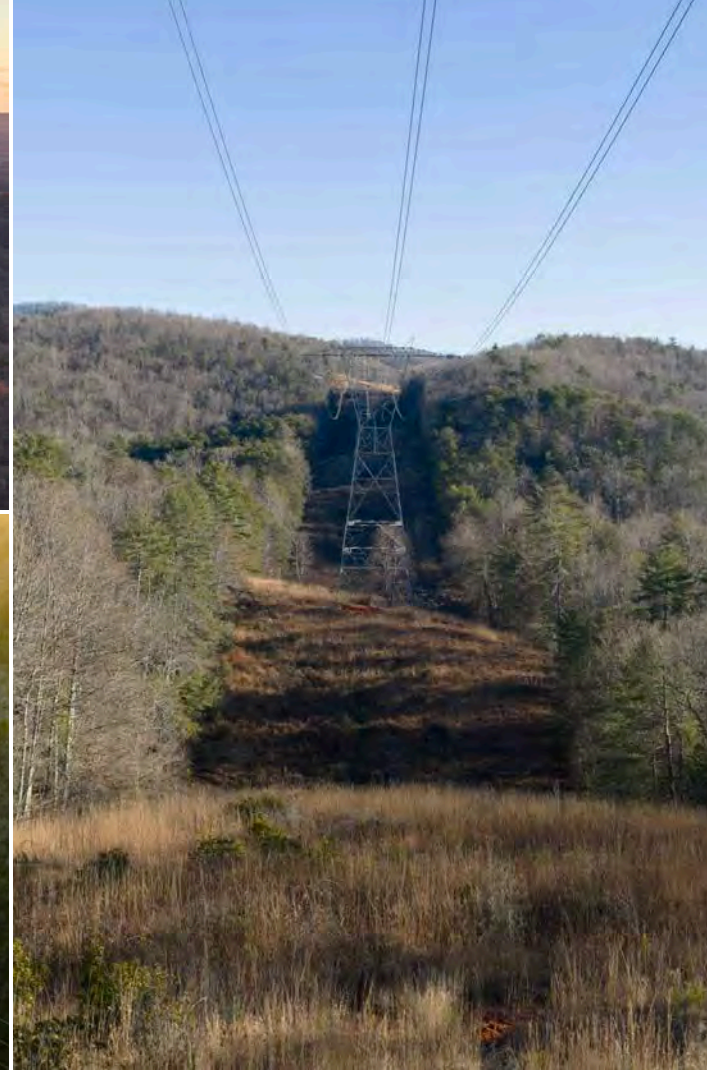
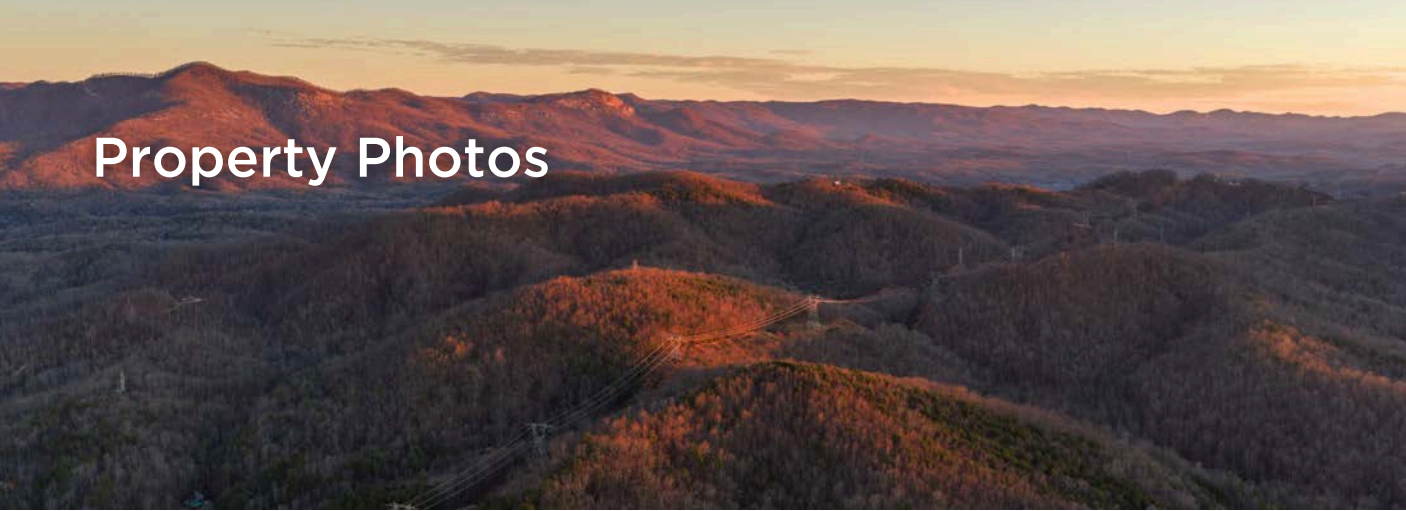
Lot Size: ±53.87 Acres

Sale Price: \$614,000

Acreage, taxes, utilities, and lot dimensions to be verified by Buyer and/or Buyer's agent



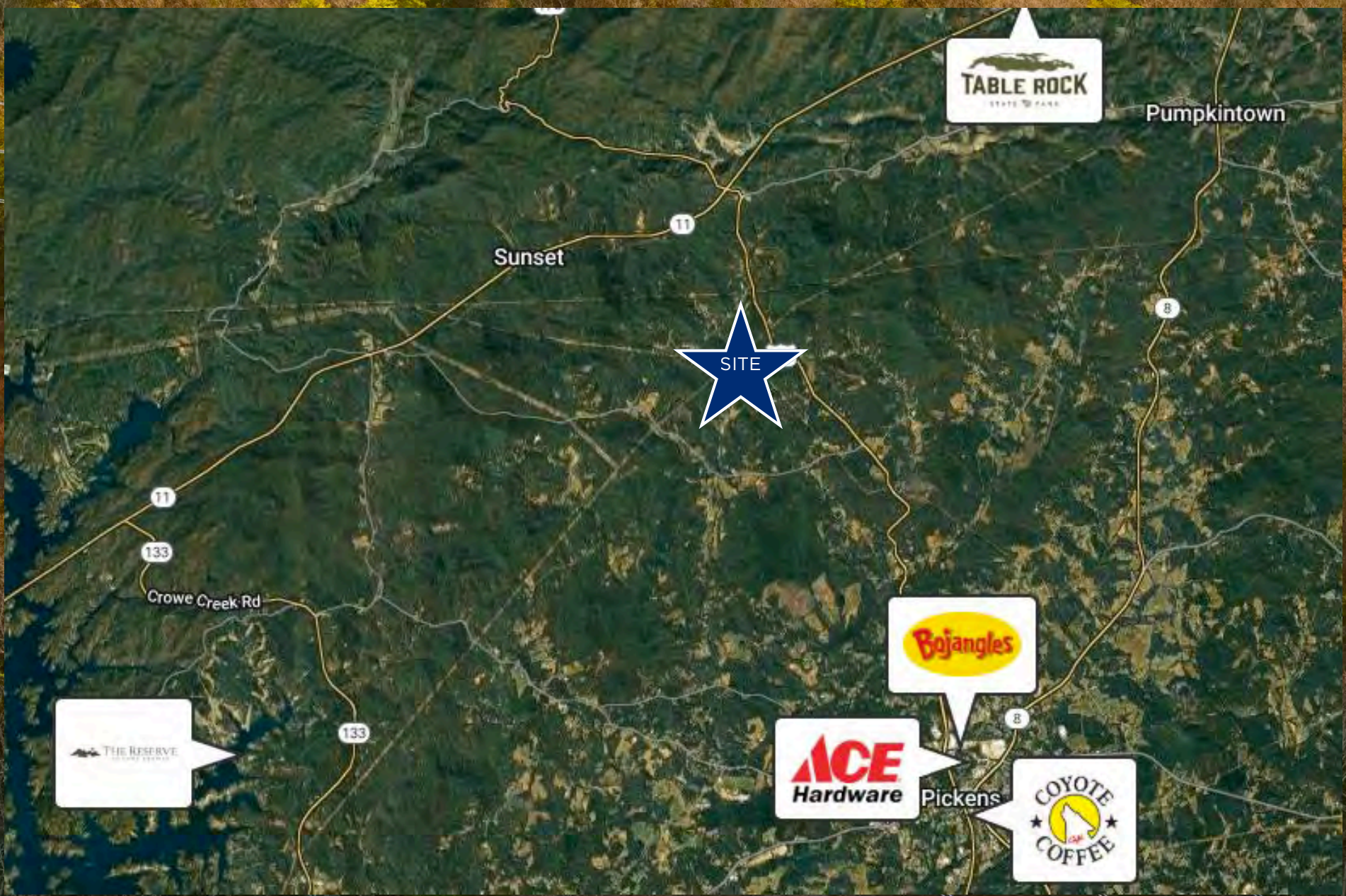
Property Photos



Retail Map

Pickens, SC

REEDY



Contact Info

Reedy Land Co.



Knox Duncan

Senior Associate

864-608-0029

kduncan@reedypg.com



Gabe Grammer

Senior Associate

803-205-3260

ggrammer@reedypg.com



Jonathan Monts

Associate

864-389-0299

jmonts@reedypg.com



Denton Warlick

Associate

864-238-7740

dwarlick@reedypg.com