



SMALLTOWN

HUNTING PROPERTIES
& REAL ESTATESM

56.7± ACRES
STONE COUNTY, MS
\$256,000



OFFICE (769) 760-0005 | WWW.SMALLTOWNPROPERTIES.COM

THE STONE 56.7

PROPERTY PROFILE

LOCATION:

- New Hope Road
Wiggins, MS 39577
- Stone County
- 8± Miles NE of Wiggins
- 38± Miles S of Hattiesburg

COORDINATES:

- 30.895498, -89.252231

PROPERTY USE:

- Hunting
- Timber Investment
- Potential Home/Cabin Site

PROPERTY INFORMATION:

- 56.7± Total Acres
- County Road Frontage w/Gate
- Established Trail System
- Diverse Terrain & Habitat
- Mixed Timber
- Pine Plantation
- Deer & Turkey
- Frontage on Double Branch
- Utilities Available

TAX INFORMATION:

- Parcel 131-01-004.000
- \$242.08 (2025)



DENNIS WEST | MANAGING BROKER
C: 601-248-4396 | dennis@smalltownproperties.com

DEWAYNE ATKINSON | LAND SPECIALIST
C: 601-832-3075 | dewayne@smalltownproperties.com

2121 5th St., Ste 206 - Meridian, MS 39301 | O: 769-760-0005 | smalltownproperties.com Information is believed to be accurate but not guaranteed.

WELCOME TO THE STONE 56.7

WELCOME TO THE STONE 56.7! Located in Stone County, Mississippi, this 56.7± acre tract fronts New Hope Road and is situated approximately 8 miles north of Wiggins, offering an excellent balance of accessibility, recreation, and investment potential.

The property features county road frontage with a gated entrance and an established interior trail system that provides easy access throughout. The land offers diverse terrain and habitat, including a well-stocked, productive pine plantation for timber investment and hardwood bottoms along Double Branch, which runs through the property and enhances both aesthetics and wildlife appeal. The pines were last thinned in 2016. Double Branch serves as a natural water source and travel corridor for wildlife, contributing to strong deer and turkey hunting opportunities.



DENNIS WEST | MANAGING BROKER
C: 601-248-4396 | dennis@smalltownproperties.com

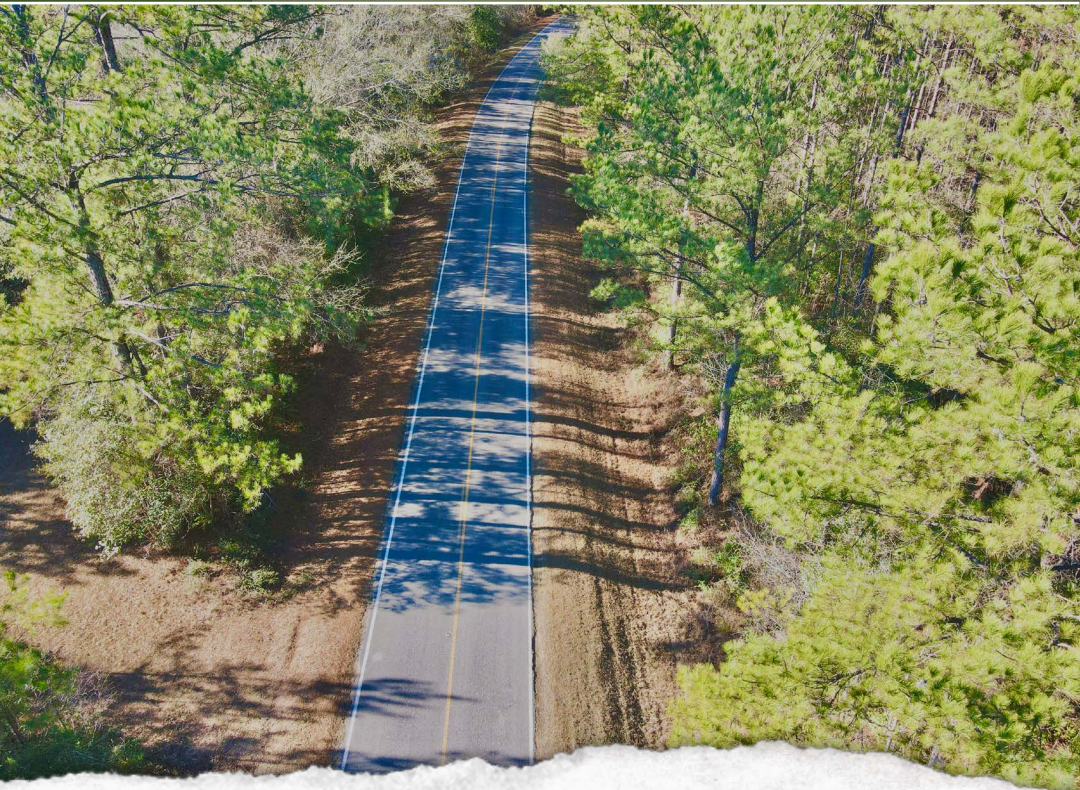
DEWAYNE ATKINSON | LAND SPECIALIST
C: 601-832-3075 | dewayne@smalltownproperties.com

2121 5th St., Ste 206 - Meridian, MS 39301 | O: 769-760-0005 | smalltownproperties.com Information is believed to be accurate but not guaranteed.

MORE ABOUT THE STONE 56.7

Power and water are available nearby, making this tract well suited for a future homestead, hunting camp, or rural retreat. Whether you're looking for a hunting property, timber investment, or a peaceful place to build in the country, the Stone 56.7 offers versatility, privacy, and long-term value in a convenient location.

Contact DeWayne Atkinson or Dennis West today to schedule a private showing and experience #TheSmallTownWay.



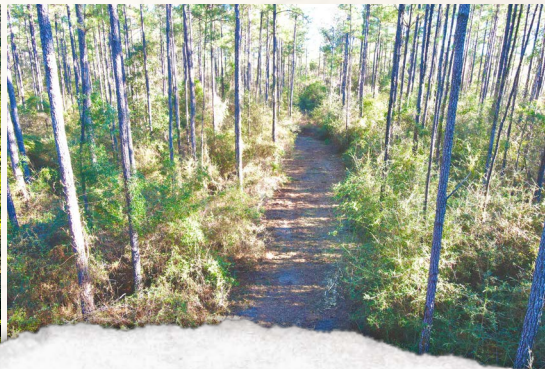
DENNIS WEST | MANAGING BROKER
C: 601-248-4396 | dennis@smalltownproperties.com

DEWAYNE ATKINSON | LAND SPECIALIST
C: 601-832-3075 | dewayne@smalltownproperties.com

2121 5th St., Ste 206 - Meridian, MS 39301 | O: 769-760-0005 | smalltownproperties.com Information is believed to be accurate but not guaranteed.

56.7± ACRES

STONE COUNTY, MISSISSIPPI



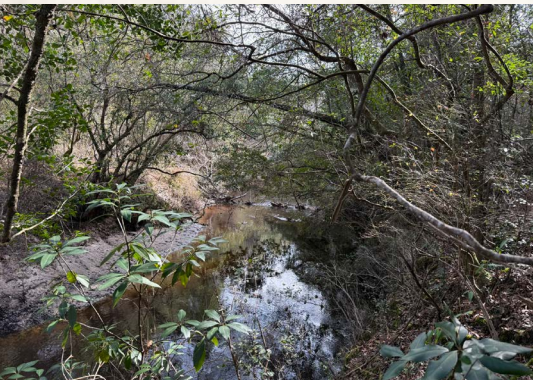
DENNIS WEST | MANAGING BROKER
C: 601-248-4396 | dennis@smalltownproperties.com

DEWAYNE ATKINSON | LAND SPECIALIST
C: 601-832-3075 | dewayne@smalltownproperties.com

2121 5th St., Ste 206 - Meridian, MS 39301 | O: 769-760-0005 | smalltownproperties.com *Information is believed to be accurate but not guaranteed.*

56.7± ACRES

STONE COUNTY, MISSISSIPPI



DENNIS WEST | MANAGING BROKER
C: 601-248-4396 | dennis@smalltownproperties.com

DEWAYNE ATKINSON | LAND SPECIALIST
C: 601-832-3075 | dewayne@smalltownproperties.com

2121 5th St., Ste 206 - Meridian, MS 39301 | O: 769-760-0005 | smalltownproperties.com *Information is believed to be accurate but not guaranteed.*

56.7± ACRES

STONE COUNTY, MISSISSIPPI



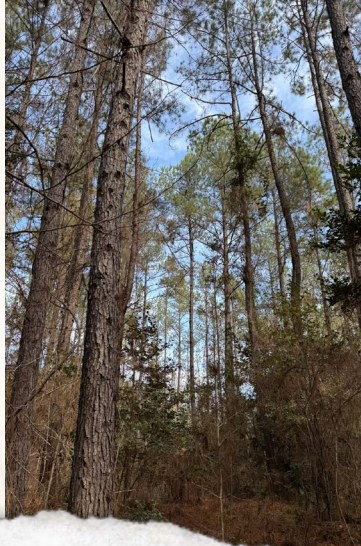
DENNIS WEST | MANAGING BROKER
C: 601-248-4396 | dennis@smalltownproperties.com

DEWAYNE ATKINSON | LAND SPECIALIST
C: 601-832-3075 | dewayne@smalltownproperties.com

2121 5th St., Ste 206 - Meridian, MS 39301 | O: 769-760-0005 | smalltownproperties.com *Information is believed to be accurate but not guaranteed.*

56.7± ACRES

STONE COUNTY, MISSISSIPPI



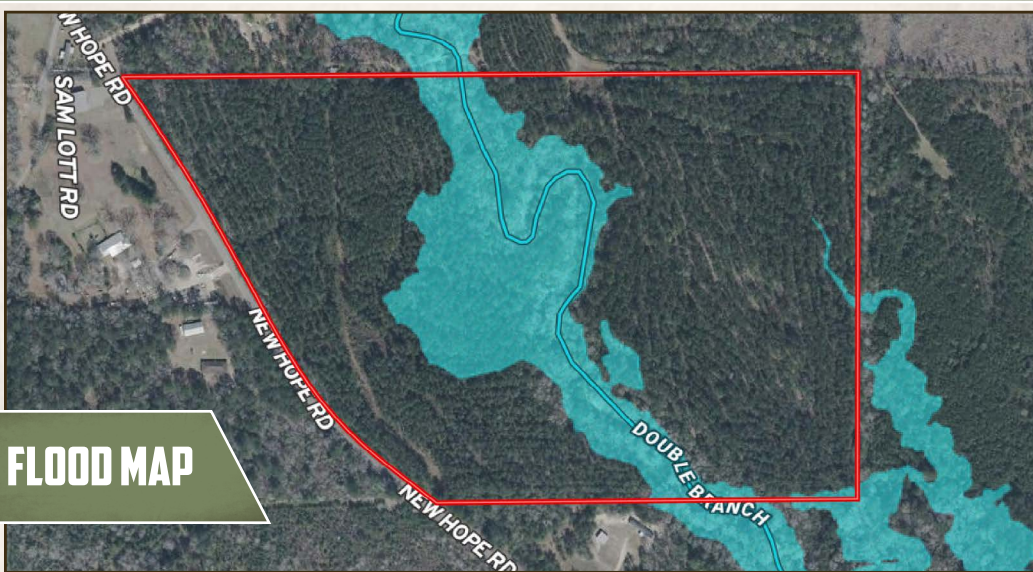
DENNIS WEST | MANAGING BROKER
C: 601-248-4396 | dennis@smalltownproperties.com

DEWAYNE ATKINSON | LAND SPECIALIST
C: 601-832-3075 | dewayne@smalltownproperties.com

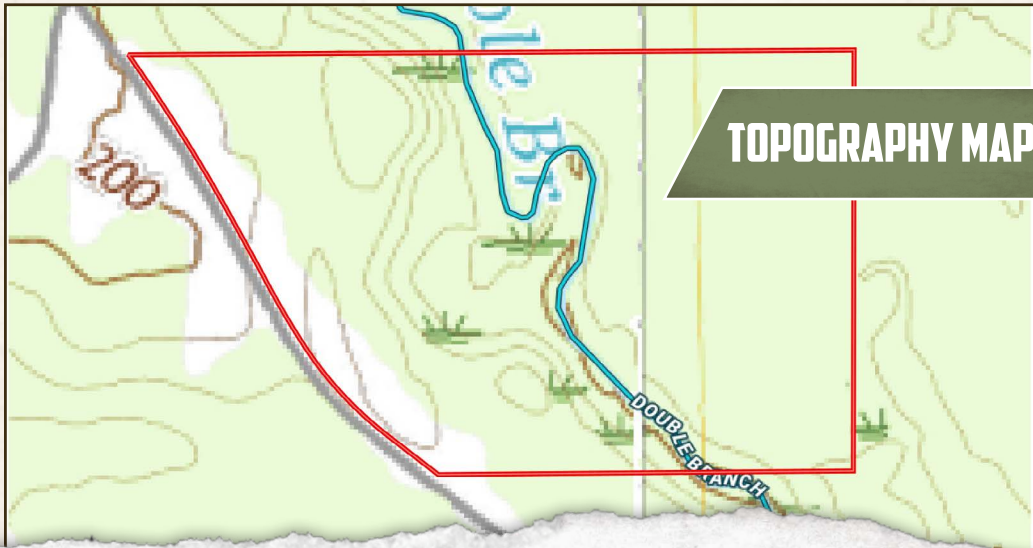
2121 5th St., Ste 206 - Meridian, MS 39301 | O: 769-760-0005 | smalltownproperties.com *Information is believed to be accurate but not guaranteed.*

56.7± ACRES

STONE COUNTY, MISSISSIPPI



FLOOD MAP



TOPOGRAPHY MAP



DENNIS WEST | MANAGING BROKER
 C: 601-248-4396 | dennis@smalltownproperties.com



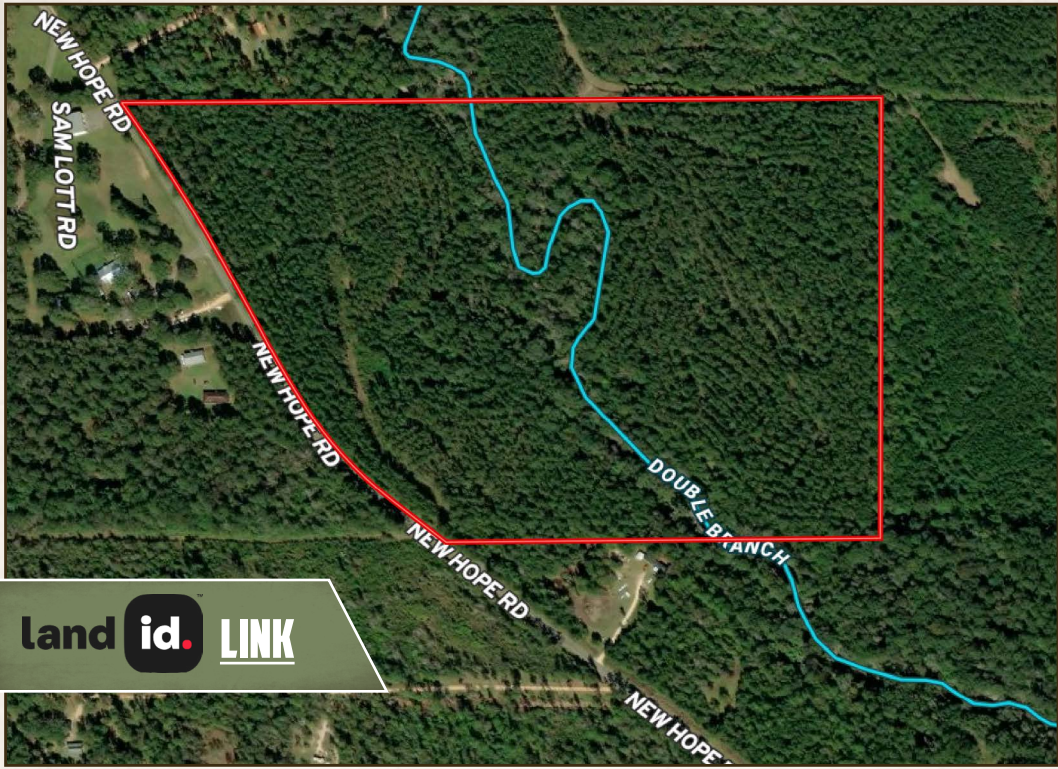
SMALLTOWN
 HUNTING PROPERTIES
 & REAL ESTATESM



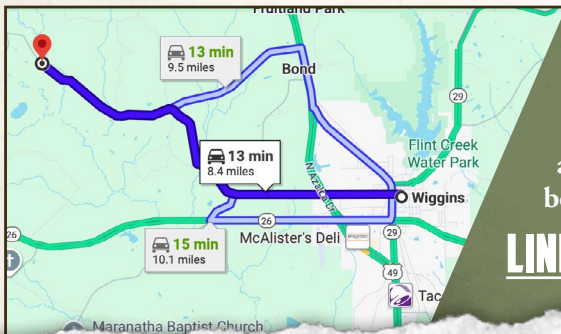
DEWAYNE ATKINSON | LAND SPECIALIST
 C: 601-832-3075 | dewayne@smalltownproperties.com

56.7± ACRES

STONE COUNTY, MISSISSIPPI



land id. LINK



Directions From Wiggins, MS:
 Travel on East College Avenue for 1.5 miles. Continue onto New Hope Road, and after 6.8 miles, the destination will be on the right.

[LINK TO GOOGLE MAP DIRECTIONS](#)



DENNIS WEST | MANAGING BROKER
 C: 601-248-4396 | dennis@smalltownproperties.com



SMALLTOWN
 HUNTING PROPERTIES
 & REAL ESTATESM



DEWAYNE ATKINSON | LAND SPECIALIST
 C: 601-832-3075 | dewayne@smalltownproperties.com