

Home report

# 115 Carnoustie Road, Dover, Kent County, Delaware, United States, 19904



**Total Area: 3249 sq. ft**

Floor 1: 1289 sq. ft, Floor 2: 1960 sq. ft

Excluded: Garage 548 sq. ft, Walls: 221 sq. ft

## Property summary


 **2** Floors

 **4** Bedrooms

 **2** Bathrooms

Home report

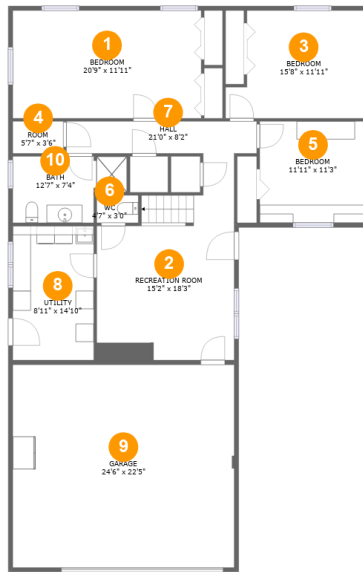
**115 Carnoustie Road, Dover, Kent County, Delaware, United States, 19904**

 **1**  
Half baths

 **1**  
Garages

Home report

# 115 Carnoustie Road, Dover, Kent County, Delaware, United States, 19904



## Room dimensions

Floor 1

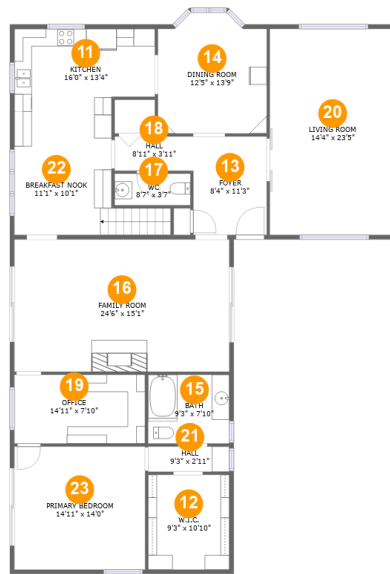
Total:1289sqft

Excluded: 548sqft

#		Max Dimensions	sqft	Included
1	Bedroom	20'9" x 11'11"	248 sq. ft	Yes
2	Recreation Room	15'2" x 18'3"	259 sq. ft	Yes
3	Bedroom	15'8" x 11'11"	166 sq. ft	Yes
4	Room	5'7" x 3'6"	20 sq. ft	Yes
5	Bedroom	11'11" x 11'3"	133 sq. ft	Yes
6	WC	4'7" x 3'0"	14 sq. ft	Yes
7	Hall	21'0" x 8'2"	90 sq. ft	Yes
8	Utility	8'11" x 14'10"	133 sq. ft	Yes
9	Garage	24'6" x 22'5"	548 sq. ft	No
10	Bath	12'7" x 7'4"	80 sq. ft	Yes

Home report

# 115 Carnoustie Road, Dover, Kent County, Delaware, United States, 19904



## Room dimensions

Floor 2

Total:1960sqft

Excluded: 0sqft

#		Max Dimensions	sqft	Included
11	Kitchen	16'0" x 13'4"	186 sq. ft	Yes
12	W.I.C.	9'3" x 10'10"	100 sq. ft	Yes
13	Foyer	8'4" x 11'3"	94 sq. ft	Yes
14	Dining Room	12'5" x 13'9"	159 sq. ft	Yes
15	Bath	9'3" x 7'10"	72 sq. ft	Yes
16	Family Room	24'6" x 15'1"	368 sq. ft	Yes
17	WC	8'7" x 3'7"	31 sq. ft	Yes
18	Hall	8'11" x 3'11"	35 sq. ft	Yes
19	Office	14'11" x 7'10"	117 sq. ft	Yes
20	Living Room	14'4" x 23'5"	336 sq. ft	Yes
21	Hall	9'3" x 2'11"	27 sq. ft	Yes

Home report

# 115 Carnoustie Road, Dover, Kent County, Delaware, United States, 19904

#		Max Dimensions	sqft	Included
22	Breakfast Nook	11'1" x 10'1"	132 sq. ft	Yes
23	Primary Bedroom	14'11" x 14'0"	209 sq. ft	Yes

115 Carnoustie Road, Dover, Kent County, Delaware, United States, 19904

**1** Floor 1 - Bedroom

---

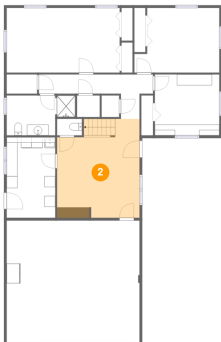


**Max Dimensions:** 20'9" x 11'11"  
**Calculated Area:** 248 sq. ft  
**Included:** Yes

**Heated:** Yes  
**Finished:** Yes  
**Enclosed:** Yes  
**Contiguous:** Yes  
**Permitted:** Yes  
**Wet space:** No  
**Addition:** No  
**Conversion:** No

**2** Floor 1 - Recreation Room

---



**Max Dimensions:** 15'2" x 18'3"  
**Calculated Area:** 259 sq. ft  
**Included:** Yes

**Heated:** Yes  
**Finished:** Yes  
**Enclosed:** Yes  
**Contiguous:** Yes  
**Permitted:** Yes  
**Wet space:** No  
**Addition:** No  
**Conversion:** No

115 Carnoustie Road, Dover, Kent County, Delaware, United States, 19904

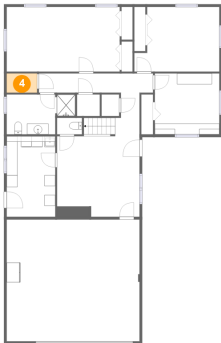
**3** Floor 1 - Bedroom



Max Dimensions: 15'8" x 11'11"  
Calculated Area: 166 sq. ft  
Included: Yes

Heated: Yes  
Finished: Yes  
Enclosed: Yes  
Contiguous: Yes  
Permitted: Yes  
Wet space: No  
Addition: No  
Conversion: No

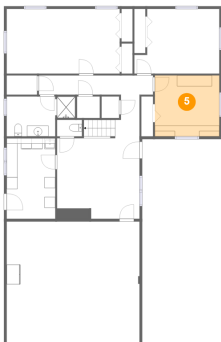
**4** Floor 1 - Room



Max Dimensions: 5'7" x 3'6"  
Calculated Area: 20 sq. ft  
Included: Yes

Heated: Yes  
Finished: Yes  
Enclosed: Yes  
Contiguous: Yes  
Permitted: Yes  
Wet space: No  
Addition: No  
Conversion: No

**5** Floor 1 - Bedroom



Max Dimensions: 11'11" x 11'3"  
Calculated Area: 133 sq. ft  
Included: Yes

Heated: Yes  
Finished: Yes  
Enclosed: Yes  
Contiguous: Yes  
Permitted: Yes  
Wet space: No  
Addition: No  
Conversion: No

115 Carnoustie Road, Dover, Kent County, Delaware, United States, 19904

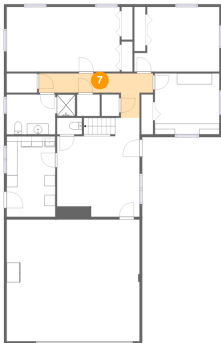
**6** Floor 1 - WC



Max Dimensions: 4'7" x 3'0"  
Calculated Area: 14 sq. ft  
Included: Yes

Heated: Yes  
Finished: Yes  
Enclosed: Yes  
Contiguous: Yes  
Permitted: Yes  
Wet space: Yes  
Addition: No  
Conversion: No

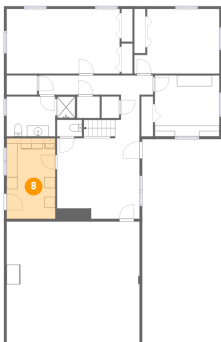
**7** Floor 1 - Hall



Max Dimensions: 21'0" x 8'2"  
Calculated Area: 90 sq. ft  
Included: Yes

Heated: Yes  
Finished: Yes  
Enclosed: Yes  
Contiguous: Yes  
Permitted: Yes  
Wet space: No  
Addition: No  
Conversion: No

**8** Floor 1 - Utility



Max Dimensions: 8'11" x 14'10"  
Calculated Area: 133 sq. ft  
Included: Yes

Heated: Yes  
Finished: Yes  
Enclosed: Yes  
Contiguous: Yes  
Permitted: Yes  
Wet space: No  
Addition: No  
Conversion: No

115 Carnoustie Road, Dover, Kent County, Delaware, United States, 19904

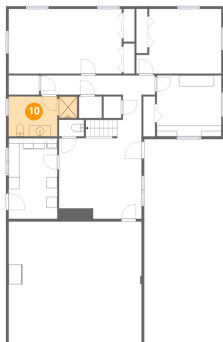
9 Floor 1 - Garage



Max Dimensions: 24'6" x 22'5"  
Calculated Area: 548 sq. ft  
Included: No

Heated: No  
Finished: No  
Enclosed: Yes  
Contiguous: Yes  
Permitted: Yes  
Wet space: No  
Addition: No  
Conversion: No

10 Floor 1 - Bath



Max Dimensions: 12'7" x 7'4"  
Calculated Area: 80 sq. ft  
Included: Yes

Heated: Yes  
Finished: Yes  
Enclosed: Yes  
Contiguous: Yes  
Permitted: Yes  
Wet space: Yes  
Addition: No  
Conversion: No

11 Floor 2 - Kitchen



Max Dimensions: 16'0" x 13'4"  
Calculated Area: 186 sq. ft  
Included: Yes

Heated: Yes  
Finished: Yes  
Enclosed: Yes  
Contiguous: Yes  
Permitted: Yes  
Wet space: No  
Addition: No  
Conversion: No

115 Carnoustie Road, Dover, Kent County, Delaware, United States, 19904

**12** Floor 2 - W.I.C.



Max Dimensions: 9'3" x 10'10"  
Calculated Area: 100 sq. ft  
Included: Yes

Heated: Yes  
Finished: Yes  
Enclosed: Yes  
Contiguous: Yes  
Permitted: Yes  
Wet space: No  
Addition: No  
Conversion: No

**13** Floor 2 - Foyer



Max Dimensions: 8'4" x 11'3"  
Calculated Area: 94 sq. ft  
Included: Yes

Heated: Yes  
Finished: Yes  
Enclosed: Yes  
Contiguous: Yes  
Permitted: Yes  
Wet space: No  
Addition: No  
Conversion: No

**14** Floor 2 - Dining Room



Max Dimensions: 12'5" x 13'9"  
Calculated Area: 159 sq. ft  
Included: Yes

Heated: Yes  
Finished: Yes  
Enclosed: Yes  
Contiguous: Yes  
Permitted: Yes  
Wet space: No  
Addition: No  
Conversion: No

115 Carnoustie Road, Dover, Kent County, Delaware, United States, 19904

**15** Floor 2 - Bath



Max Dimensions: 9'3" x 7'10"  
Calculated Area: 72 sq. ft  
Included: Yes

Heated: Yes  
Finished: Yes  
Enclosed: Yes  
Contiguous: Yes  
Permitted: Yes  
Wet space: Yes  
Addition: No  
Conversion: No

**16** Floor 2 - Family Room



Max Dimensions: 24'6" x 15'1"  
Calculated Area: 368 sq. ft  
Included: Yes

Heated: Yes  
Finished: Yes  
Enclosed: Yes  
Contiguous: Yes  
Permitted: Yes  
Wet space: No  
Addition: No  
Conversion: No

**17** Floor 2 - WC



Max Dimensions: 8'7" x 3'7"  
Calculated Area: 31 sq. ft  
Included: Yes

Heated: Yes  
Finished: Yes  
Enclosed: Yes  
Contiguous: Yes  
Permitted: Yes  
Wet space: Yes  
Addition: No  
Conversion: No

115 Carnoustie Road, Dover, Kent County, Delaware, United States, 19904

**18** Floor 2 - Hall



Max Dimensions: 8'11" x 3'11"  
Calculated Area: 35 sq. ft  
Included: Yes

Heated: Yes  
Finished: Yes  
Enclosed: Yes  
Contiguous: Yes  
Permitted: Yes  
Wet space: No  
Addition: No  
Conversion: No

**19** Floor 2 - Office



Max Dimensions: 14'11" x 7'10"  
Calculated Area: 117 sq. ft  
Included: Yes

Heated: Yes  
Finished: Yes  
Enclosed: Yes  
Contiguous: Yes  
Permitted: Yes  
Wet space: No  
Addition: No  
Conversion: No

**20** Floor 2 - Living Room



Max Dimensions: 14'4" x 23'5"  
Calculated Area: 336 sq. ft  
Included: Yes

Heated: Yes  
Finished: Yes  
Enclosed: Yes  
Contiguous: Yes  
Permitted: Yes  
Wet space: No  
Addition: No  
Conversion: No

**21** Floor 2 - Hall



Max Dimensions: 9'3" x 2'11"  
Calculated Area: 27 sq. ft  
Included: Yes

Heated: Yes  
Finished: Yes  
Enclosed: Yes  
Contiguous: Yes  
Permitted: Yes  
Wet space: No  
Addition: No  
Conversion: No

**22** Floor 2 - Breakfast Nook



Max Dimensions: 11'1" x 10'1"  
Calculated Area: 132 sq. ft  
Included: Yes

Heated: Yes  
Finished: Yes  
Enclosed: Yes  
Contiguous: Yes  
Permitted: Yes  
Wet space: No  
Addition: No  
Conversion: No

**23** Floor 2 - Primary Bedroom



Max Dimensions: 14'11" x 14'0"  
Calculated Area: 209 sq. ft  
Included: Yes

Heated: Yes  
Finished: Yes  
Enclosed: Yes  
Contiguous: Yes  
Permitted: Yes  
Wet space: No  
Addition: No  
Conversion: No