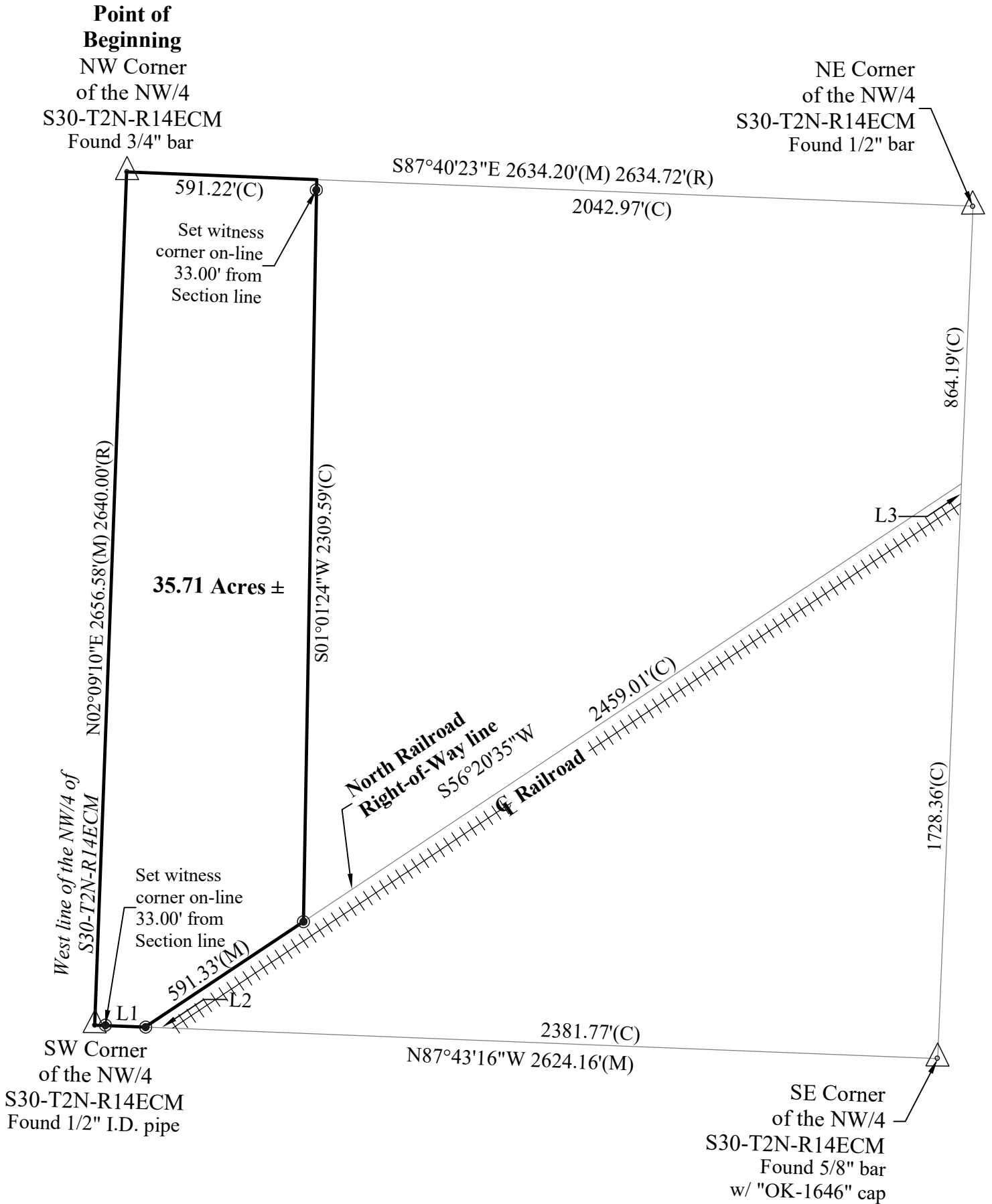
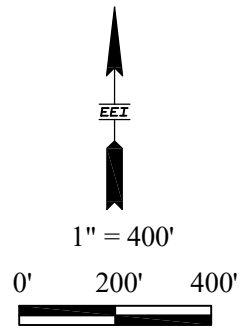


LINE DATA		
	Bearing	Distance
L1	N87°43'16"W	157.20'(C)
L2	N87°43'16"W	85.20'(C)
L3	S02°22'10"W	61.82'(C)

LEGEND

- △ Section Corner
- Set 1/2"x24" Rebar w/ "EEI-1853" cap
- C Calculated Distance
- M Measured Distance
- R Recorded Distance (from GLO notes)



EARLES ENGINEERING & INSPECTION, LLC	
Engineers — Surveyors — Construction Inspectors	
116 N. Augustus St. McPherson, Ks 67460 (785)309-1060	211 North Kansas Liberal, Kansas 67901 (620)626-8912
112 W. 4th St. Pittsburg, Ks 66762 (620)308-5577	
FIELDWORK: TR	Certificate of Survey A parcel in the NW/4 S30-T2N-R14ECM Texas Co., Oklahoma
DRAWN BY: JR	
CHECKED BY: TR	
DATE: 11/20/2025	
FILE NO: 25-761	
SHEET 2 OF 2	