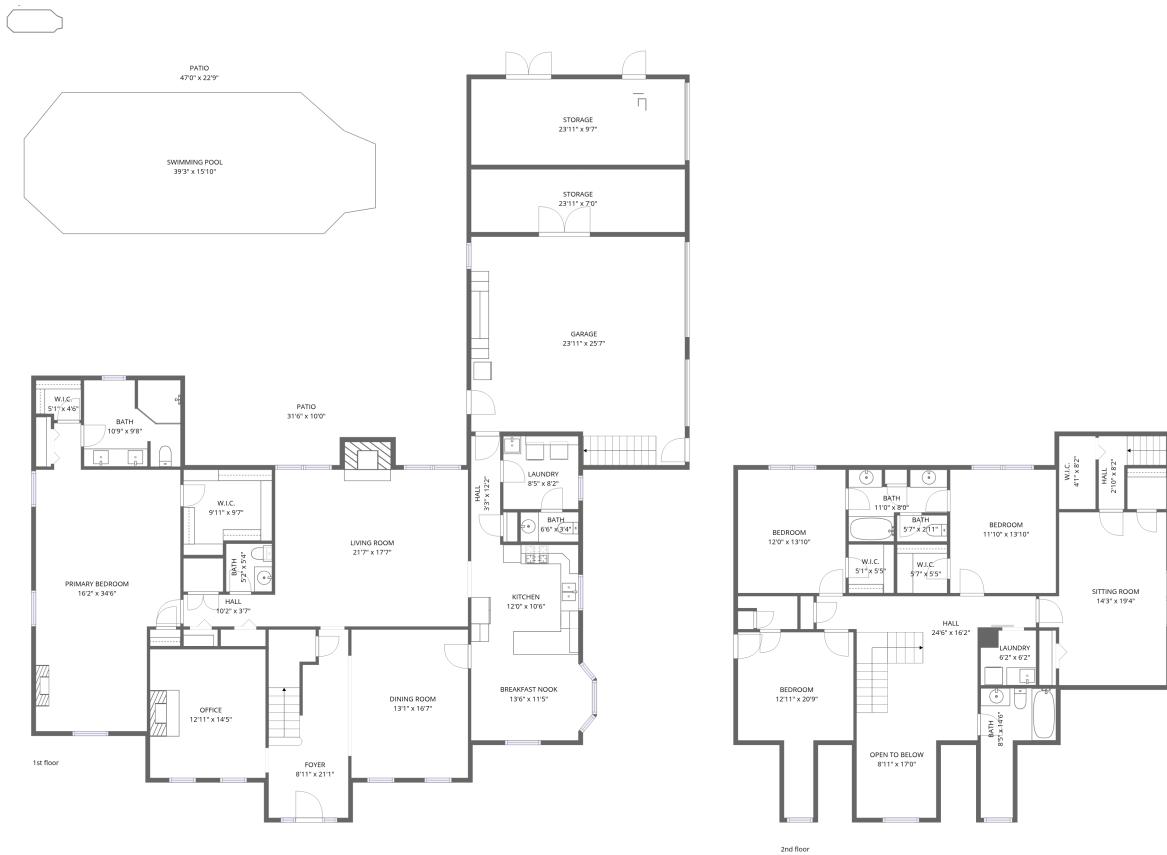


Home data report

31515 Rhett Drive, Spanish Fort, Baldwin County, Alabama, United States, 36527



Total Area: 3601 sq. ft

1st Floor: 2231 sq. ft, 2nd Floor: 1370 sq. ft

Excluded: Patio 723 sq. ft, Garage 564 sq. ft, Storage 397 sq. ft, Fireplace 20 sq. ft, Open to below 185 sq. ft, Walls: 304 sq. ft

Property summary



Home data report

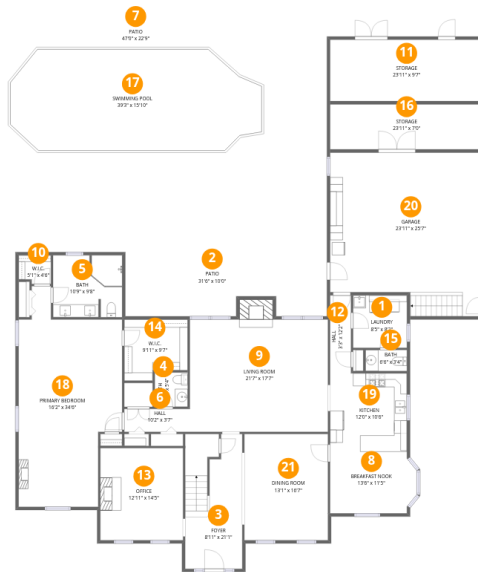
**31515 Rhett Drive, Spanish Fort, Baldwin County, Alabama,
United States, 36527**

 **2**
Half baths

 **1**
Garages

Home data report

31515 Rhett Drive, Spanish Fort, Baldwin County, Alabama, United States, 36527



Room dimensions

Floor 1

Total:2231sqft

Excluded: 1704sqft

#		Dimensions	sqft	Counted as living area
1	Laundry	8'5" x 8'2"	69 sq. ft	Yes
2	Patio	31'6" x 10'0"	315 sq. ft	No
3	Foyer	8'11" x 21'1"	188 sq. ft	Yes
4	Bath	5'2" x 5'4"	28 sq. ft	Yes
5	Bath	10'9" x 9'8"	104 sq. ft	Yes
6	Hall	10'2" x 3'7"	36 sq. ft	Yes
7	Patio	47'0" x 22'9"	1071 sq. ft	No
8	Breakfast Nook	13'6" x 11'5"	154 sq. ft	Yes
9	Living Room	21'7" x 17'7"	379 sq. ft	Yes
10	W.I.C.	5'1" x 4'6"	23 sq. ft	Yes
11	Storage	23'11" x 9'7"	229 sq. ft	No

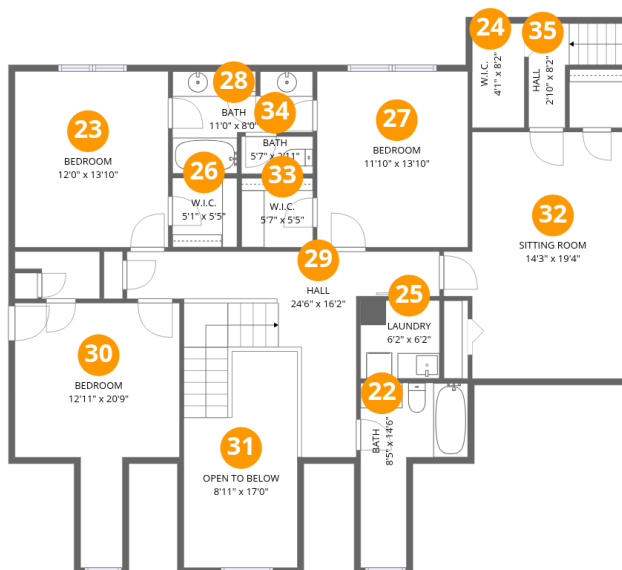
Home data report

**31515 Rhett Drive, Spanish Fort, Baldwin County, Alabama,
United States, 36527**

#		Dimensions	sqft	Counted as living area
12	Hall	3'3" x 12'2"	40 sq. ft	Yes
13	Office	12'11" x 14'5"	186 sq. ft	Yes
14	W.I.C.	9'11" x 9'7"	95 sq. ft	Yes
15	Bath	6'6" x 3'4"	21 sq. ft	Yes
16	Storage	23'11" x 7'0"	168 sq. ft	No
17	Swimming Pool	39'3" x 15'10"	621 sq. ft	No
18	Primary Bedroom	16'2" x 34'6"	557 sq. ft	Yes
19	Kitchen	12'0" x 10'6"	126 sq. ft	Yes
20	Garage	23'11" x 25'7"	611 sq. ft	No
21	Dining Room	13'1" x 16'7"	217 sq. ft	Yes

Home data report

31515 Rhett Drive, Spanish Fort, Baldwin County, Alabama, United States, 36527



Room dimensions

Floor 2

Total:1370sqft Excluded: 185sqft

#		Dimensions	sqft	Counted as living area
22	Bath	8'5" x 14'6"	122 sq. ft	Yes
23	Bedroom	12'0" x 13'10"	166 sq. ft	Yes
24	W.I.C.	4'1" x 8'2"	33 sq. ft	Yes
25	Laundry	6'2" x 6'2"	38 sq. ft	Yes
26	W.I.C.	5'1" x 5'5"	28 sq. ft	Yes
27	Bedroom	11'10" x 13'10"	163 sq. ft	Yes
28	Bath	11'0" x 8'0"	88 sq. ft	Yes
29	Hall	24'6" x 16'2"	396 sq. ft	Yes
30	Bedroom	12'11" x 20'9"	268 sq. ft	Yes
31	Open To Below	8'11" x 17'0"	151 sq. ft	No
32	Sitting Room	14'3" x 19'4"	275 sq. ft	Yes

Home data report

**31515 Rhett Drive, Spanish Fort, Baldwin County, Alabama,
United States, 36527**

#		Dimensions	sqft	Counted as living area
33	W.I.C.	5'7" x 5'5"	30 sq. ft	Yes
34	Bath	5'7" x 2'11"	16 sq. ft	Yes
35	Hall	2'10" x 8'2"	23 sq. ft	Yes

31515 Rhett Drive, Spanish Fort, Baldwin County, Alabama,
United States, 36527

1 Floor 1 - Laundry



Dimensions: 8'5" x 8'2"
Area: 69 sq. ft
Counted as living area: Yes

Heated: Yes
Finished: Yes
Enclosed: Yes
Contiguous: Yes
Permitted: Yes
Wet space: No
Addition: No
Conversion: No

2 Floor 1 - Patio



Dimensions: 31'6" x 10'0"
Area: 315 sq. ft
Counted as living area: No

Heated: No
Finished: No
Enclosed: No
Contiguous: Yes
Permitted: Yes
Wet space: No
Addition: No
Conversion: No

31515 Rhett Drive, Spanish Fort, Baldwin County, Alabama,
United States, 36527

3 Floor 1 - Foyer



Dimensions: 8'11" x 21'1"
Area: 188 sq. ft
Counted as living area: Yes

Heated: Yes
Finished: Yes
Enclosed: Yes
Contiguous: Yes
Permitted: Yes
Wet space: No
Addition: No
Conversion: No

4 Floor 1 - Bath



Dimensions: 5'2" x 5'4"
Area: 28 sq. ft
Counted as living area: Yes

Heated: Yes
Finished: Yes
Enclosed: Yes
Contiguous: Yes
Permitted: Yes
Wet space: Yes
Addition: No
Conversion: No

5 Floor 1 - Bath



Dimensions: 10'9" x 9'8"
Area: 104 sq. ft
Counted as living area: Yes

Heated: Yes
Finished: Yes
Enclosed: Yes
Contiguous: Yes
Permitted: Yes
Wet space: Yes
Addition: No
Conversion: No

31515 Rhett Drive, Spanish Fort, Baldwin County, Alabama, United States, 36527

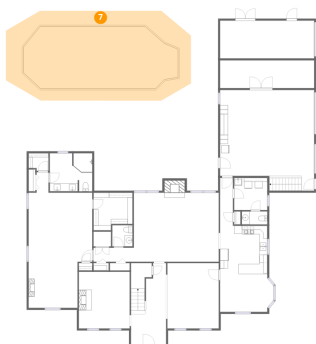
6 Floor 1 - Hall



Dimensions: 10'2" x 3'7"
Area: 36 sq. ft
Counted as living area: Yes

Heated: Yes
Finished: Yes
Enclosed: Yes
Contiguous: Yes
Permitted: Yes
Wet space: No
Addition: No
Conversion: No

7 Floor 1 - Patio



Dimensions: 47'0" x 22'9"
Area: 1071 sq. ft
Counted as living area: No

Heated: No
Finished: No
Enclosed: No
Contiguous: Yes
Permitted: Yes
Wet space: No
Addition: No
Conversion: No

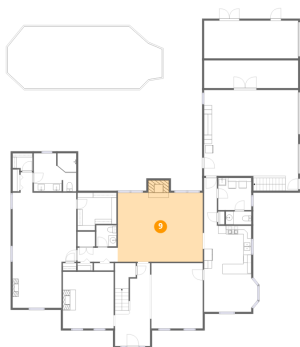
8 Floor 1 - Breakfast Nook



Dimensions: 13'6" x 11'5"
Area: 154 sq. ft
Counted as living area: Yes

Heated: Yes
Finished: Yes
Enclosed: Yes
Contiguous: Yes
Permitted: Yes
Wet space: No
Addition: No
Conversion: No

9 Floor 1 - Living Room



Dimensions: 21'7" x 17'7"
Area: 379 sq. ft
Counted as living area: Yes

Heated: Yes
Finished: Yes
Enclosed: Yes
Contiguous: Yes
Permitted: Yes
Wet space: No
Addition: No
Conversion: No

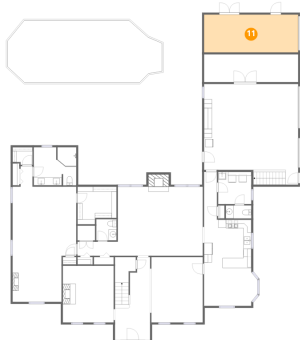
10 Floor 1 - W.I.C.



Dimensions: 5'1" x 4'6"
Area: 23 sq. ft
Counted as living area: Yes

Heated: Yes
Finished: Yes
Enclosed: Yes
Contiguous: Yes
Permitted: Yes
Wet space: No
Addition: No
Conversion: No

11 Floor 1 - Storage



Dimensions: 23'11" x 9'7"
Area: 229 sq. ft
Counted as living area: No

Heated: No
Finished: No
Enclosed: No
Contiguous: Yes
Permitted: Yes
Wet space: No
Addition: No
Conversion: No

12 Floor 1 - Hall



Dimensions: 3'3" x 12'2"
Area: 40 sq. ft
Counted as living area: Yes

Heated: Yes
Finished: Yes
Enclosed: Yes
Contiguous: Yes
Permitted: Yes
Wet space: No
Addition: No
Conversion: No

13 Floor 1 - Office



Dimensions: 12'11" x 14'5"
Area: 186 sq. ft
Counted as living area: Yes

Heated: Yes
Finished: Yes
Enclosed: Yes
Contiguous: Yes
Permitted: Yes
Wet space: No
Addition: No
Conversion: No

14 Floor 1 - W.I.C.



Dimensions: 9'11" x 9'7"
Area: 95 sq. ft
Counted as living area: Yes

Heated: Yes
Finished: Yes
Enclosed: Yes
Contiguous: Yes
Permitted: Yes
Wet space: No
Addition: No
Conversion: No

15 Floor 1 - Bath



Dimensions: 6'6" x 3'4"
Area: 21 sq. ft
Counted as living area: Yes

Heated: Yes
Finished: Yes
Enclosed: Yes
Contiguous: Yes
Permitted: Yes
Wet space: Yes
Addition: No
Conversion: No

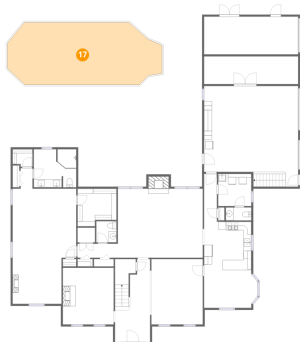
16 Floor 1 - Storage



Dimensions: 23'11" x 7'0"
Area: 168 sq. ft
Counted as living area: No

Heated: No
Finished: No
Enclosed: No
Contiguous: Yes
Permitted: Yes
Wet space: No
Addition: No
Conversion: No

17 Floor 1 - Swimming Pool



Dimensions: 39'3" x 15'10"
Area: 621 sq. ft
Counted as living area: No

Heated: No
Finished: No
Enclosed: No
Contiguous: Yes
Permitted: No
Wet space: No
Addition: No
Conversion: No

31515 Rhett Drive, Spanish Fort, Baldwin County, Alabama,
United States, 36527

18 Floor 1 - Primary Bedroom



Dimensions: 16'2" x 34'6"
Area: 557 sq. ft
Counted as living area: Yes

Heated: Yes
Finished: Yes
Enclosed: Yes
Contiguous: Yes
Permitted: Yes
Wet space: No
Addition: No
Conversion: No

19 Floor 1 - Kitchen



Dimensions: 12'0" x 10'6"
Area: 126 sq. ft
Counted as living area: Yes

Heated: Yes
Finished: Yes
Enclosed: Yes
Contiguous: Yes
Permitted: Yes
Wet space: No
Addition: No
Conversion: No

20 Floor 1 - Garage



Dimensions: 23'11" x 25'7"
Area: 611 sq. ft
Counted as living area: No

Heated: No
Finished: No
Enclosed: Yes
Contiguous: Yes
Permitted: Yes
Wet space: No
Addition: No
Conversion: No

31515 Rhett Drive, Spanish Fort, Baldwin County, Alabama,
United States, 36527

21 Floor 1 - Dining Room



Dimensions: 13'1" x 16'7"
Area: 217 sq. ft
Counted as living area: Yes

Heated: Yes
Finished: Yes
Enclosed: Yes
Contiguous: Yes
Permitted: Yes
Wet space: No
Addition: No
Conversion: No

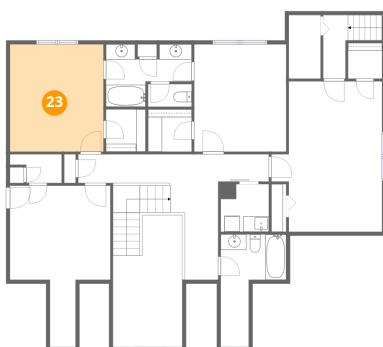
22 Floor 2 - Bath



Dimensions: 8'5" x 14'6"
Area: 122 sq. ft
Counted as living area: Yes

Heated: Yes
Finished: Yes
Enclosed: Yes
Contiguous: Yes
Permitted: Yes
Wet space: Yes
Addition: No
Conversion: No

23 Floor 2 - Bedroom



Dimensions: 12'0" x 13'10"
Area: 166 sq. ft
Counted as living area: Yes

Heated: Yes
Finished: Yes
Enclosed: Yes
Contiguous: Yes
Permitted: Yes
Wet space: No
Addition: No
Conversion: No

24 Floor 2 - W.I.C.



Dimensions: 4'1" x 8'2"
Area: 33 sq. ft
Counted as living area: Yes

Heated: Yes
Finished: Yes
Enclosed: Yes
Contiguous: Yes
Permitted: Yes
Wet space: No
Addition: No
Conversion: No

25 Floor 2 - Laundry



Dimensions: 6'2" x 6'2"
Area: 38 sq. ft
Counted as living area: Yes

Heated: Yes
Finished: Yes
Enclosed: Yes
Contiguous: Yes
Permitted: Yes
Wet space: No
Addition: No
Conversion: No

26 Floor 2 - W.I.C.



Dimensions: 5'1" x 5'5"
Area: 28 sq. ft
Counted as living area: Yes

Heated: Yes
Finished: Yes
Enclosed: Yes
Contiguous: Yes
Permitted: Yes
Wet space: No
Addition: No
Conversion: No

31515 Rhett Drive, Spanish Fort, Baldwin County, Alabama,
United States, 36527

27 Floor 2 - Bedroom



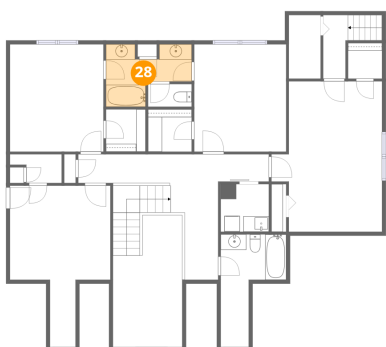
Dimensions: 11'10" x 13'10"

Area: 163 sq. ft

Counted as living area: Yes

Heated: Yes
Finished: Yes
Enclosed: Yes
Contiguous: Yes
Permitted: Yes
Wet space: No
Addition: No
Conversion: No

28 Floor 2 - Bath



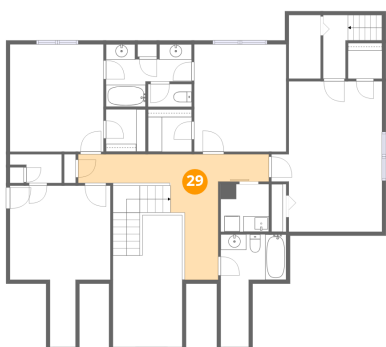
Dimensions: 11'0" x 8'0"

Area: 88 sq. ft

Counted as living area: Yes

Heated: Yes
Finished: Yes
Enclosed: Yes
Contiguous: Yes
Permitted: Yes
Wet space: Yes
Addition: No
Conversion: No

29 Floor 2 - Hall



Dimensions: 24'6" x 16'2"

Area: 396 sq. ft

Counted as living area: Yes

Heated: Yes
Finished: Yes
Enclosed: Yes
Contiguous: Yes
Permitted: Yes
Wet space: No
Addition: No
Conversion: No

31515 Rhett Drive, Spanish Fort, Baldwin County, Alabama,
United States, 36527

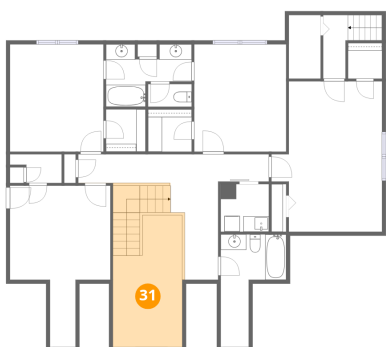
30 Floor 2 - Bedroom



Dimensions: 12'11" x 20'9"
Area: 268 sq. ft
Counted as living area: Yes

Heated: Yes
Finished: Yes
Enclosed: Yes
Contiguous: Yes
Permitted: Yes
Wet space: No
Addition: No
Conversion: No

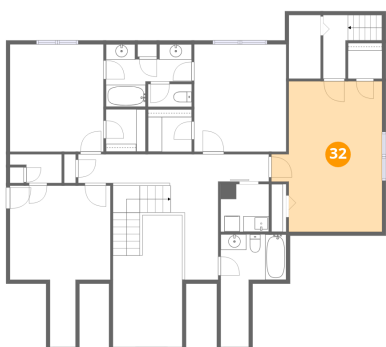
31 Floor 2 - Open To Below



Dimensions: 8'11" x 17'0"
Area: 151 sq. ft
Counted as living area: No

Heated: No
Finished: No
Enclosed: No
Contiguous: Yes
Permitted: No
Wet space: No
Addition: No
Conversion: No

32 Floor 2 - Sitting Room



Dimensions: 14'3" x 19'4"
Area: 275 sq. ft
Counted as living area: Yes

Heated: Yes
Finished: Yes
Enclosed: Yes
Contiguous: Yes
Permitted: Yes
Wet space: No
Addition: No
Conversion: No

31515 Rhett Drive, Spanish Fort, Baldwin County, Alabama,
United States, 36527

33 Floor 2 - W.I.C.



Dimensions: 5'7" x 5'5"
Area: 30 sq. ft
Counted as living area: Yes

Heated: Yes
Finished: Yes
Enclosed: Yes
Contiguous: Yes
Permitted: Yes
Wet space: No
Addition: No
Conversion: No

34 Floor 2 - Bath



Dimensions: 5'7" x 2'11"
Area: 16 sq. ft
Counted as living area: Yes

Heated: Yes
Finished: Yes
Enclosed: Yes
Contiguous: Yes
Permitted: Yes
Wet space: Yes
Addition: No
Conversion: No

35 Floor 2 - Hall



Dimensions: 2'10" x 8'2"
Area: 23 sq. ft
Counted as living area: Yes

Heated: Yes
Finished: Yes
Enclosed: Yes
Contiguous: Yes
Permitted: Yes
Wet space: No
Addition: No
Conversion: No