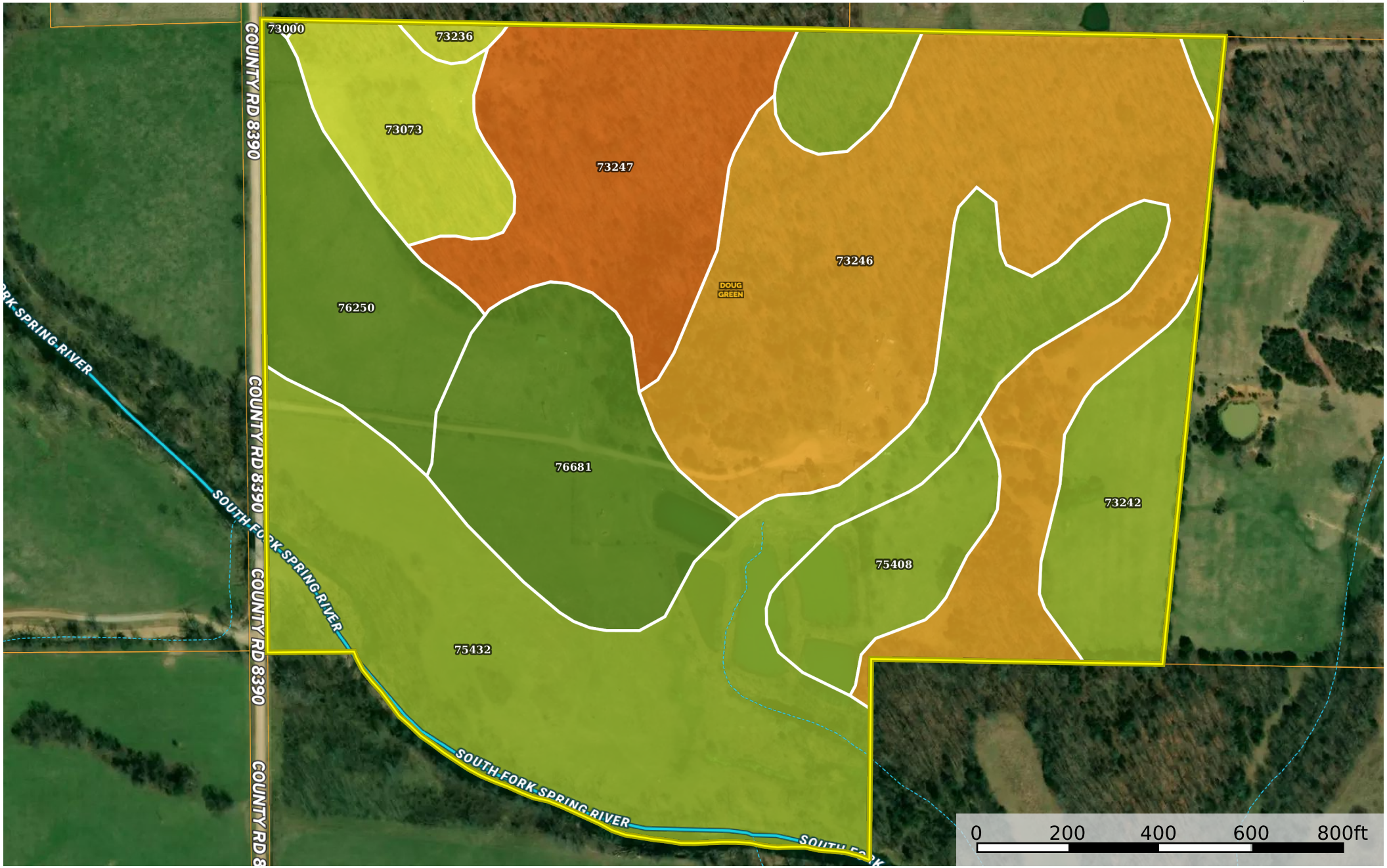


# Howell 72, Spring River Missouri, AC +/-



|  Boundary 72.26 ac

SOIL CODE	SOIL DESCRIPTION	ACRES	%	CPI	NCCPI	CAP
75432	Batcave-Farewell complex, 0 to 2 percent slopes, frequently flooded	19.5	26.98	0	57	3w
73246	Alred very gravelly silt loam, 8 to 15 percent slopes	19.48	26.95	0	61	6e
73247	Alred extremely gravelly silt loam, 15 to 35 percent slopes	8.2	11.34	0	11	7e
76681	Lostpond silt loam, 0 to 2 percent slopes, rarely flooded	7.11	9.84	0	67	2e
73242	Fanchon-Tonti complex, 3 to 8 percent slopes	5.74	7.94	0	63	3e
76250	Britwater silt loam, 0 to 2 percent slopes, rarely flooded	5.25	7.26	0	81	2e
73073	Scholten-Poynor complex, 8 to 15 percent slopes	3.48	4.81	0	36	4w
75408	Secesh silt loam, 0 to 2 percent slopes, rarely flooded	3.15	4.36	0	79	3s
73236	Scholten-Poynor complex, 3 to 8 percent slopes	0.32	0.44	0	45	4s
73000	Pomme silt loam, 3 to 8 percent slopes	0.03	0.04	0	70	3e
TOTALS		72.26( *)	100%	-	55.95	4.14

(\*) Total acres may differ in the second decimal compared to the sum of each acreage soil. This is due to a round error because we only show the acres of each soil with two decimal.

## Capability Legend

Increased Limitations and Hazards

Decreased Adaptability and Freedom of Choice Users

Land, Capability

								
	1	2	3	4	5	6	7	8
'Wild Life'	•	•	•	•	•	•	•	•
Forestry	•	•	•	•	•	•	•	
Limited	•	•	•	•	•	•	•	
Moderate	•	•	•	•	•	•		
Intense	•	•	•	•	•			
Limited	•	•	•	•				
Moderate	•	•	•					
Intense	•	•						
Very Intense	•							

### Grazing Cultivation

(c) climatic limitations (e) susceptibility to erosion

(s) soil limitations within the rooting zone (w) excess of water