

1037 Barber St

Quiet & Serene in Hurst!



Reasons that you'll regret if you let this property pass...

1037 Barber St, Hurst, TX — clean, classic, and immaculately maintained. This **single-story ranch-style brick home** has pleasing & striking curb appeal: warm brick, light trim, and an **arched recessed entry** w/storm/screen door & arched windows that complement a distinctive look. Inside, it's an **open plan** w/living + dining + kitchen flowing together, and the **living room sits at the center of it all**—easy sightlines, good flow, and a comfortable setup for everyday life. Look up and you'll notice the **vaulted ceiling** w/the center beam—nice touch and it makes the space feel bigger. The window package is a big plus here: **vinyl double-pane (low-E) double-hung windows** throughout, lots of daylight, and they come w/**transferable lifetime warranty**. Window coverings stay. The **galley kitchen** is set up for real use —plenty of cabinets, solid counter space, and a **separate pantry**. Appliances convey: **refrig, microwave, dishwasher, oven, cooktop & vent**. Laundry is separate with cabinets and **washer/dryer convey**. The **primary suite** is generously sized (approx **16x11**) w/a **huge walk-in closet** + ensuite bath. Floors are a practical mix of **laminated, tile, & carpet**. Out back, there's a **16x16 covered patio/pergola** plus a privacy fence/gate. The lot feels roomy, w/mature shade trees, landscaping, fencing, and a **15x9 storage shed**. Mechanical + big items: **Trane R410-A / 16 SEER HVAC, Rheem gas HWH w/recirc pump**, and an **impact-resistant Class 4 roof (CertainTeed Landmark IR)**. Attic has **blown-in insulation + spray-on heat block**. Partial cast-iron plumbing replacement (between house and sewer) has been completed, and there's a termite treatment/maintenance plan in place. The **2-car garage** has an extended area w/work bench + extra storage—great for projects and gear. Convenient to everyday stops and commuter routes, and part of **HEB ISD**. Priced for affordability and a great catch for anyone looking in the HEB ISD area and walking distance to the northeast mall.

Floorplan: 3 beds + 2 baths + kitchen (w/pantry) + living + dining + laundry + covered patio (w/pergola & privacy fence) + 2-car gar (incl extension).

Other References:

- Virtual Tour, Photos, 3D-walkthrough, & Features: <https://www.seetheproperty.com/489925>
- MLS Listing:

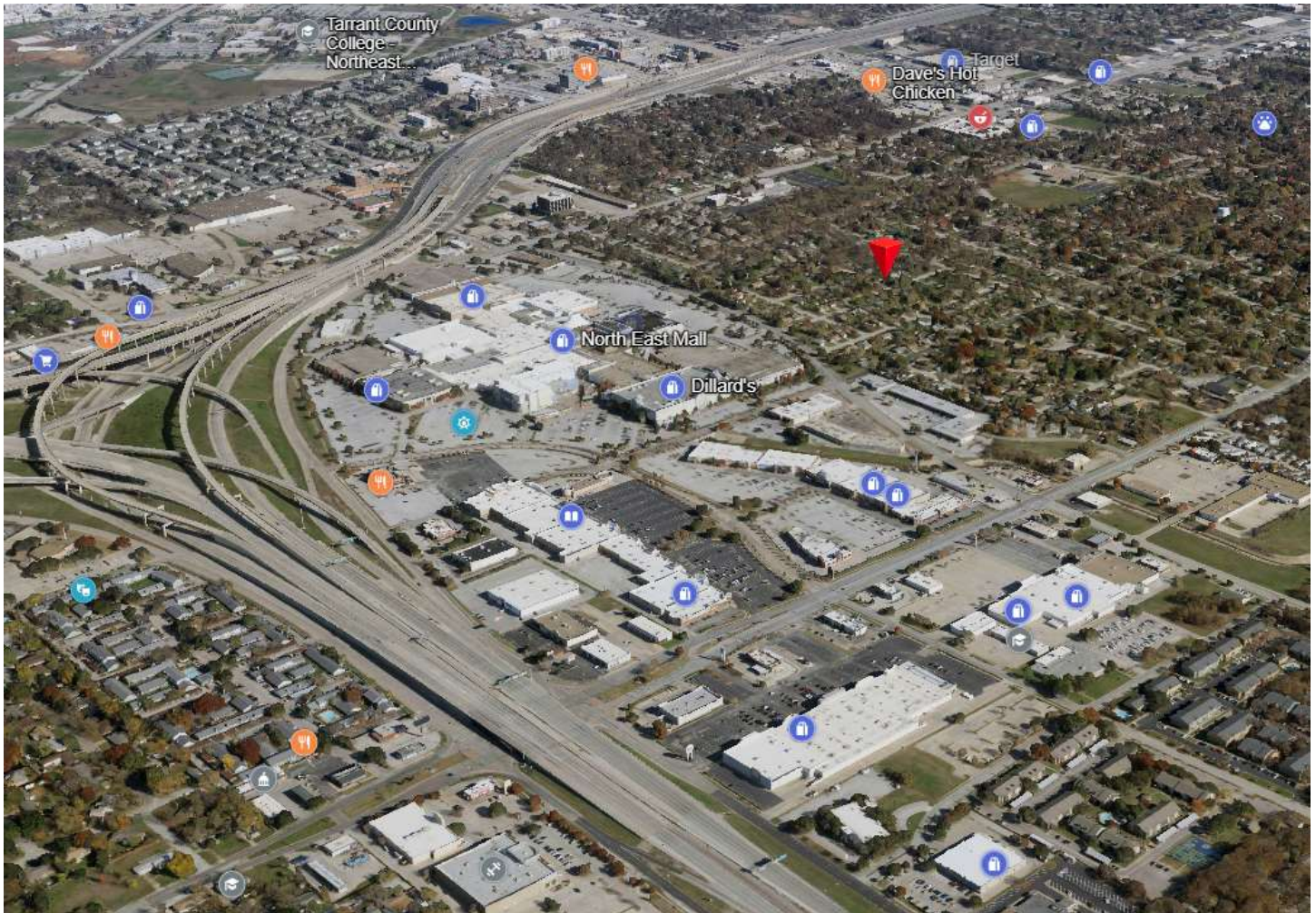
Exclusions & notes about conveyance: all appliances convey incl refrigerator & washer/dryer; window coverings



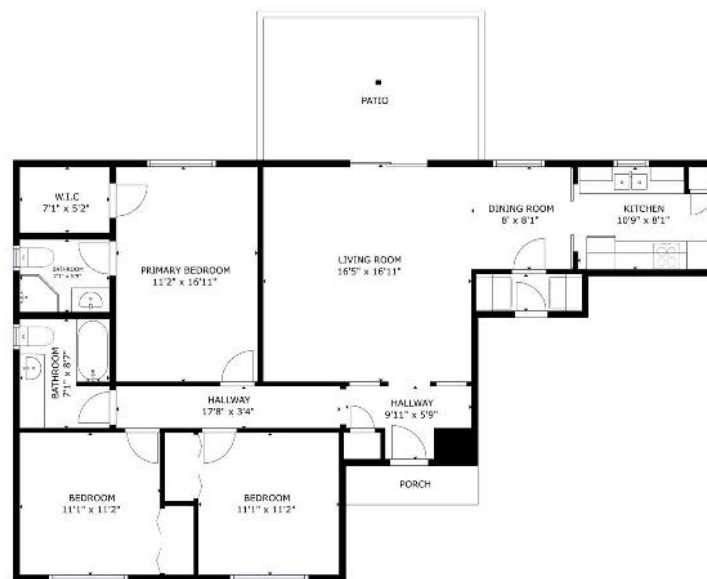
SCAN ME

Prime Location:

- [Hurst-Euless-Bedford ISD](#) – well-rated schools; Donna Park Elementary; Bedford JHS; LD Bell HS
- Walking distance to [North East Mall](#); minutes from [NRH20](#), & [other Hurst/NRH/Colleyville attractions](#); shopping, entertainment, dining.
- Minutes from Bell Helicopter, BNSF, American Airlines, Lockheed Martin, & many [other major employers](#) in the DFW area
- Nearby access to Hwys SH-183, I-820, SH-360, TX-26, I-10, US-377
- DFW airport nearby (~16 mins by car)



Floorplan:



Notable features*:

- Single-story ranch-style brick home
- welcoming arched, recessed entry leading to a storm/screen front door
- 3-bed/2-bath + kitchen + dining + living + laundry + 2 car garage; open floorplan
- laundry - washer/dryer convey
- located on a large lot with landscaping, fencing, and storage shed
- nicely landscaped; mature trees and plenty of shade
- vaulted ceiling with beautiful, center beam
- updated vinyl double pane (low-E)/double hung windows throughout - plenty of natural lighting (w/transferrable lifetime warranty); arched exterior
- window coverings
- warm-toned brick exterior w/contrasting light trim
- large 16 x 11 master bedroom has huge walkin closet; ensuite bathroom
- galley kitchen with appliances (refrig, microwave, dishwasher, oven, cooktop & vent), lots of cabinets, counter top, and separate pantry
- laminate, tile, & carpet flooring
- 16 x 16 covered back porch (pergola plus privacy fence/gate)
- large 15 x 9 storage shed
- Trane R410-A / 16 SEER HVAC [Trane 4TTR6030B1000AA]
- Rheem gas hot water heater w/recirculation pump
- impact resistant (class 4) roof (CertainTeed Landmark IR)
- 2 car garage with extended area having work bench and storage space
- attic has blown-in insulation and spray-on heat block
- partial replacement of cast-iron plumbing between house & sewer
- termite treatment/maintenance plan
- great HEB ISD schools
- any and all furnishings stay with the home (if buyer desires)

*buyer's and their agents need to verify all features, measurements, taxes, easements, & school info.

*Send
your
offer
today!*