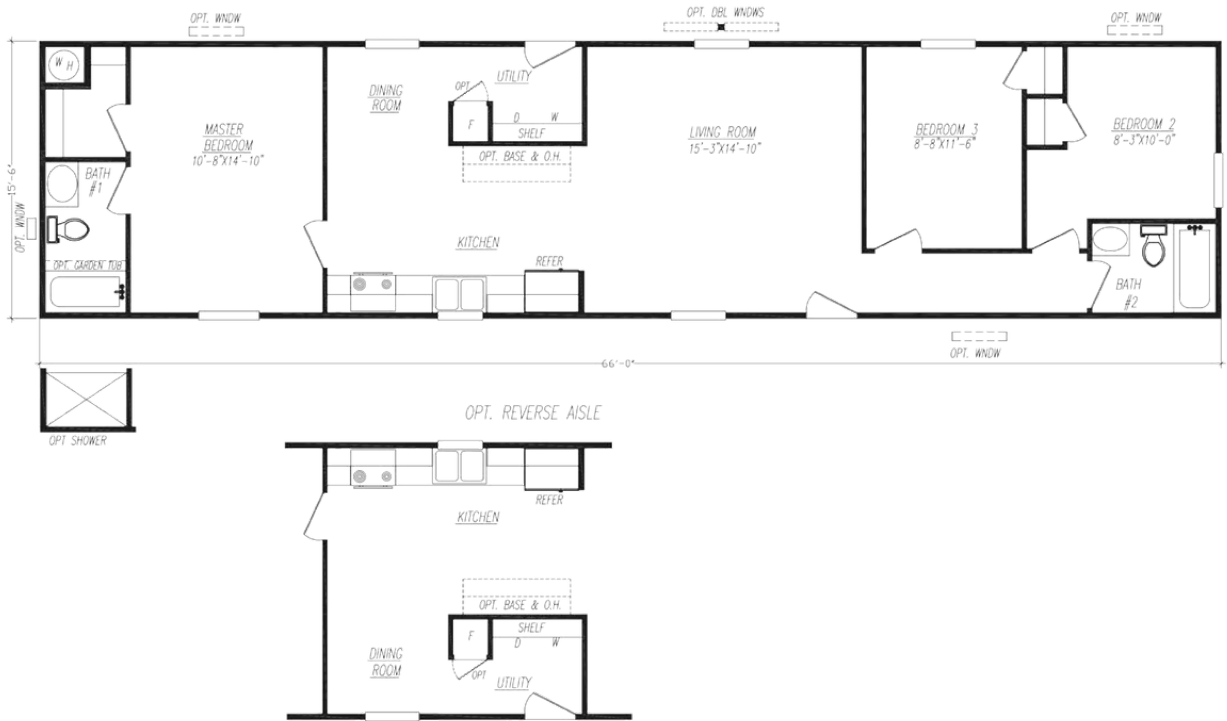


Featured Home 2026



Model 6663X-KH

3 Bedroom • 2 Bath • Floor Size 1,023 sq. ft.



**Hometown
Communities**

The
Kalahari
Single & Sectional Series





Contact Us Today

Hometown Communities

Park Name	Address	Tour	Park Type	Contact Info	Socials
Danville Mobile Home Park	1773 Spinks Chapman Rd, Kilgore, TX 75662	Tour	All Ages	903-615-3150 Email	Facebook
Posada Del Sol Resort, Mobile Home Park, and RV Park	28513 S Palm Ct Dr, Harlingen, TX 78552	Tour RV	55+	956-420-4287 Email	Facebook
Towne North Mobile Home Park	301 International Blvd, Laredo, TX 78045	Tour	All Ages	956-727-1222 Email	Facebook
Plaza Mobile Home Park	2145 N Dixie Hwy, Lima, OH 45801	Tour	All Ages	567-289-9030 Email	Facebook
Jackson Mobile Home Park	2240 Brooklyn Rd, Jackson, MI 49203	Call to schedule	All Ages	517-784-9833 Email	
Brook Park Estates - Mobile Home Park	2400 S Twp Rd 119, Tiffin, OH 44883	Tour	All Ages	419-455-6058 Email	Facebook
Northland Mobile Home Park	746 North Main St, Ada, OH 45810	Tour	All Ages	419-634-9997 Email	Facebook

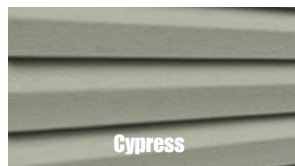
Available Options

- Black Appliance Package #1**
Microwave, Dishwasher, 18cf O/U Refer, Coil Top Electric Range
- Black Appliance Package #2**
Microwave, Dishwasher, SxS Refer, Coil Top Electric Range
- Black Appliance Package #3**
Microwave, Dishwasher, 18cf O/U Refer, Smooth Top Electric Range
- Black Appliance Package #4**
Microwave, Dishwasher, SxS Refer, Smooth Top Electric Range
- Black Appliance Package #5**
Microwave, Dishwasher, 18cf O/U Refer, Deluxe Gas Range
- Black Appliance Package #6**
Microwave, Dishwasher, SxS Refer, Deluxe Gas Range
- Stainless Steel Appliance Package #4**
Microwave, Dishwasher, SxS Refer, Smooth Top Electric Range
- Stainless Steel Appliance Package #6**
Microwave, Dishwasher, SxS Refer, Deluxe Gas Range
- Solid Cabinet Doors & Solid Cabinet Stiles**
- Cabinet over Refrigerator**
- 2" MDF Stile Cabinet Cove**
- 3 Door Linen (where available)**
- Overhead Cabinets above Washer & Dryer (24" tall)**
- Optional Base & Overhead Cabinets (where available)**
- Black Dishwasher**
- Stainless Steel Dishwasher**
- Black Microwave Over Range**
- Stainless Steel Microwave Over Range**
- Black Smooth Top Electric Range ilo Black Coil Top**
- Stainless Steel Smooth Top Electric Range ilo Black Coil Top**
- Black Deluxe Gas Range ilo Black Coil Top**
- Stainless Steel Deluxe Gas Range ilo Black Coil Top**
- Garbage Disposal**
- Add Icemaker to 18cf O/U Refrigerator**
- Black SxS Refrigerator ilo Black 18cf O/U**
- Stainless Steel SxS Refrigerator ilo Black 18cf O/U**
- 1"x4" Laminate Backsplash Throughout**
- Omit Standard Range**
 - Standard Electric Range Hookup
 - Plumb for Future Gas Range
- Omit Standard Refrigerator**
 - Plumb for Future Icemaker
- Plumb & Wire for Future Dishwasher**
- Wire for Future Microwave Over Range**
- Gas Furnace w/ 100 AMP Service**
 - 200 AMP Service
- 10 Wire Thermostat**
- Digital Thermostat**
- 40 Gallon Gas Water Heater ilo Electric**
- Plumb for Future Gas Dryer ilo Electric**
- Plumb for Water Softener**
- Add Exterior Faucet**
- Add Exterior Receptacle (with approval)**
- Add Interior Receptacle (with approval)**
- Freezer Receptacle on Dedicated Circuit (with approval)**
- 40 AMP A/C Disconnect**
- Prep for Future EV Charging Station**
- Wire & Brace for Ceiling Fan (capped off)**
- White Ceiling Fan w/ Globe Light**
- Black Ceiling Fan w/ Globe Light**
- Additional Recessed Can Lights (per set)**
- Wire & Brace for Flat Screen TV**
 - Access for TV Wiring
- TV Jack**
- Phone Jack**
- Media Jack**
- 1pc Garden Tub / Shower (where available)**
- 54" Shower Stall (where available)**
- Double Bowl Vanity (where available)**
- Vanity Light above Bathroom Sink**
- Mirrored Medicine Cabinet**
- Towel Bar & Tissue Holders**
- Medicine Cabinet**
- Stomped Ceiling ilo Popcorn**
- Beamless Mateline**
- MDF Mateline Ceiling Beam**
- 6" Mateline Drop Header**
- 3" MDF Stile Cove & Casing**
 - Main Living Area
 - Throughout Home
- 2" Plastic Blinds Throughout**
- Hardwood Window Sills Throughout**
- Add 25oz Carpet (per room)**
- Upgrade Siding**
- Add Shutters (per pair)**
- Add Smart Panel Shutters (per pair)**
- Add Cedar Shutters (per pair)**
- Add Window Lineal (per window)**
- Drop Starter Strip 3"**
- Raise Starter Strip 5"**
- Full Dormer (sectional)**
- Full Recessed Dormer (sectional)**
 - Shake Insert inside Recessed Dormer
- Clear Skies Exterior Hitch Treatment (single section)**
- Clear Skies Exterior Sidewall Treatment (sectional)**
- 1 set of Exterior Columns**
- 38"x82" 4 Lite Front Door (no storm)**
- 38"x82" 6 Lite Front Door (no storm)**
- 34"x82" 9 Lite Rear Door (no storm)**
- Full View Storm Door**
- Self-Storing Storm Door**
- Vinyl Sliding Glass Door (sectionals where available)**
- Optional Window (where available)**
- 14"x40" Privacy Bath Window (where available)**
- Add Interior Passage Door (where available)**
- Single Lever Interior Door Handles**
- White Metal Furnace Door**
- Foundation Ready Chassis**
- 30# Roof Load**
 - Alternate Frame for 30# Roof Load
- Adjustable Outriggers (per set)**
- 2x6 Wall w/ R-19 Insulation**
- R-22 Floor Insulation**
- R-33 Roof Insulation**
- Reverse Aisle (single section)**
- Mirror Image**
- End to End Flip**
- Mirror Image & End to End Flip**

Exterior Decor Selections

Standard Vinyl Siding Upgrade Vinyl Siding

Double 4.5" Dutch Lap Double 4.5" Dutch Lap



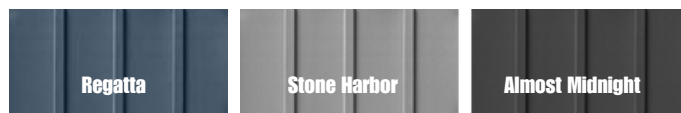
Optional Vinyl Shake



Optional Vinyl Board & Batten



Optional Upgrade Vinyl Board & Batten

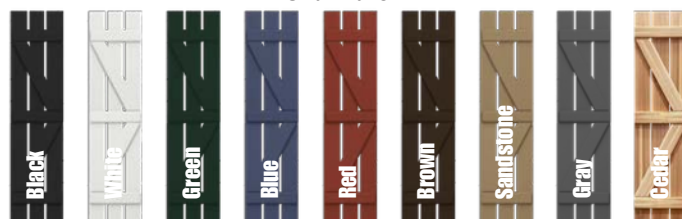


Upgrade Shutters

Raised Panel



Smart Panel

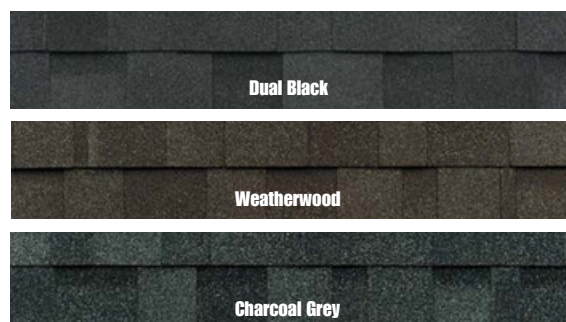


Upgrade Vinyl Lineals



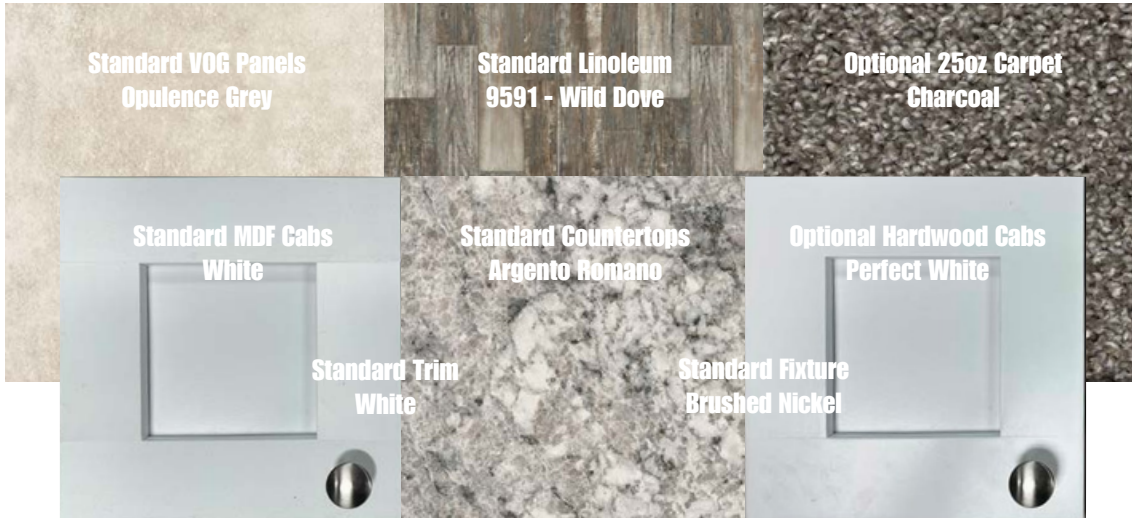
Standard Architectural Shingles

IKO Cambridge Series

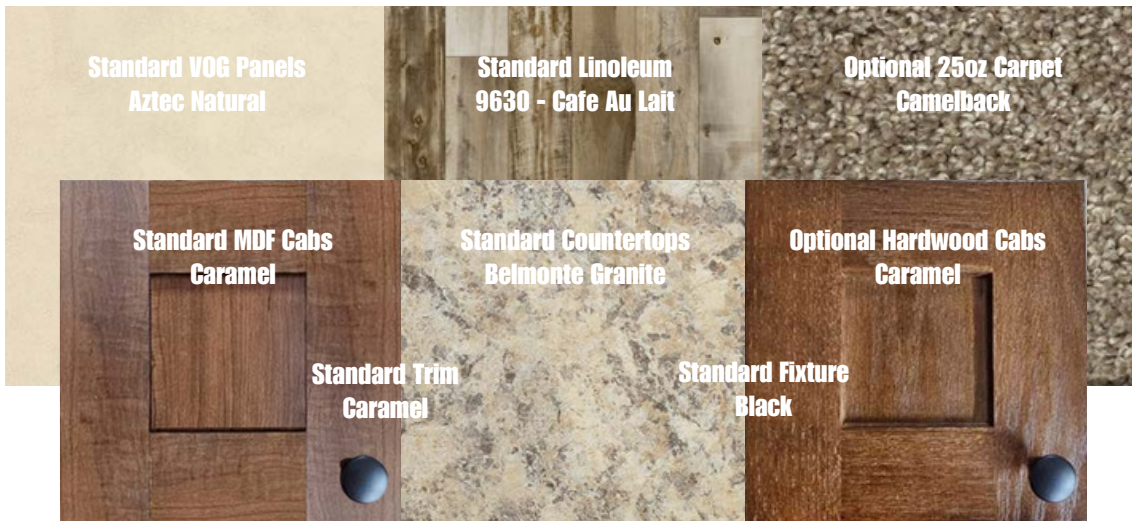


Interior Decor Selections

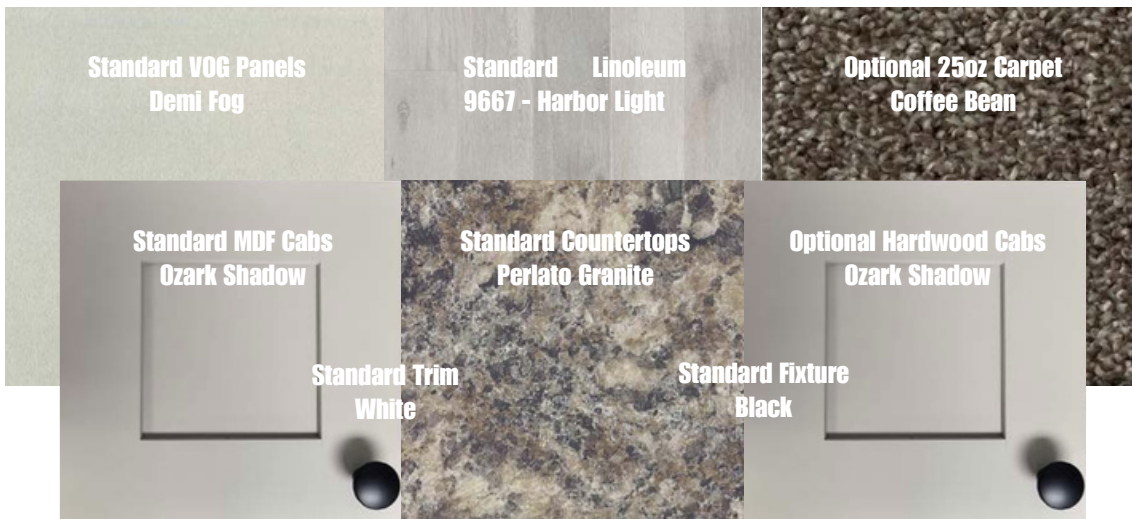
Decor #1



Decor #2



Decor #3



Kalahari Series

Standard Features

Exterior

Thermal Zone III Construction
Nominal 3/12 Roof Pitch
R-28-11-11 Insulation
(Additional Windows & Doors May Require Higher Insulation Values)
Vinyl Siding
7/16" OSB Wrap under Vinyl Siding
Housewrap w/ Window Tape
Architectural Shingles w/ Water & Ice Shield
7/16" OSB Roof Sheathing
Dead Bolt Locks at Front and Rear (Keyed Alike)
Vinyl Single Hung Gridless Windows - Low "E" w/ Argon Foam All Exterior Windows
38"x 82" R.O. 6 Panel Residential Front Door (No Storm)
34"x 82" R.O. 6 Panel Residential Rear Door (No Storm)
Jamsill Guards (34" & 38" Exterior Doors)
2x6 Floor Joists 16" O.C. (12', 14', 24' & 28' Wide)
2x8 Floor Joists 16" O.C. (16' & 32' Wide)
20 LB Roof Load
2x4 Exterior Walls 16" O.C.
Jelly Jar Light Fixtures at All Exterior Doors
Full Length Chassis w/ Outriggers
99.5" I-Beam Spread & Detachable Hitch

Interior

Pre-Selected Interior Décor Choices
Door Stop All 3 Sides
94" Flat Ceilings
Blown Textured Ceiling (Popcorn)
OSB Tongue & Groove Floor Decking
Vinyl Wall Panels Throughout
Flat Wrapped Moldings Throughout
Vinyl Flooring Throughout
Lino Entry at Front Door (w/ Opt. Carpet)
Wire Closet Shelving
2 Panel White Interior Doors Throughout
Mortised Interior Door Hinges

Because of continuous product improvements, specifications are subject to change without notice or obligation.

Electrical, Plumbing & Heating

Smoke Detectors in Main Living Areas & All Bedrooms
200 AMP Service w/ Electric Furnace
40 Gallon Electric Water Heater
(1) Exterior Electrical Receptacle (FDS)
Copper Wiring & PEX Plumbing
Whole House Shut-off Valve near Water Heater
Water Shut-off Valves (All Sinks & Commodes)
Metal Heat Ducts
GFI Receptacles in Kitchen and Baths
LED Can Lights Throughout

(Includes Living & Family Rooms)
Plumb & Wire for Washer & Dryer
Wire Shelf above Washer & Dryer

Kitchen

Black Electric Coil Top Range
Black 18cf Refrigerator
Black 30" Power Range Hood
Finished Base Cabinets & Center Shelves w/ Knobs
30" Overhead Cabinets w/ Fixed Center Shelves
Shaker Style MDF Wrapped Cabinet Doors & Stiles
Concealed Cabinet Door Hinges
Dovetail Drawers Throughout
(1) Bank of Drawers w/ Residential Rails & Guides
Laminated Countertops
Stainless Steel Kitchen Sink
Nickel Gooseneck Faucet w/ Pulldown Sprayer
Cabinet over Range & Shelf over Refrigerator

Bath

1pc Tub & Shower Combo
(Bath #1 and Additional Bathrooms)
Laminated Countertops
Mirror above Each Bathroom Sink
Power Exhaust Fan in Bathroom(s)
China Raised & Elongated Commode in Bathroom(s)
White Oval China Sink(s) w/ Single Lever Faucet(s)

ADVENTURE HOMES

www.AdventureHomes.net

1119 Fuller Drive, Garrett, IN 46738

877-510-1955



January
2026