

Home data report

**104 Chinquapin Circle, Daphne, Baldwin County, Alabama,
United States, 36526**



Total Area: 1947 sq. ft

1st Floor: 975 sq. ft, 2nd Floor: 972 sq. ft

Excluded: Carport 270 sq. ft, Porch 32 sq. ft, Deck 125 sq. ft, Fireplace 14 sq. ft, Walls: 125 sq. ft

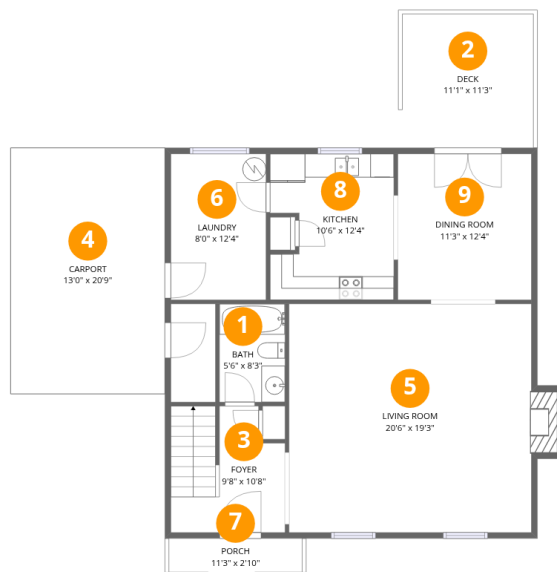
Property summary

 **2** Floors

 **3** Bedrooms

 **3** Bathrooms

104 Chinquapin Circle, Daphne, Baldwin County, Alabama, United States, 36526



Room dimensions

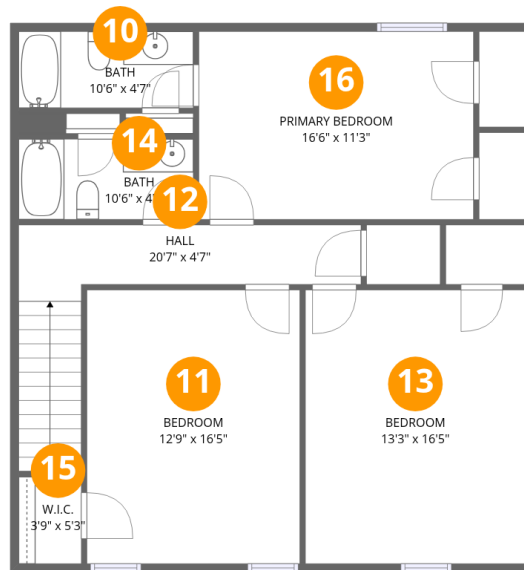
Floor 1

Total:975sqft Excluded: 441sqft

#		Dimensions	sqft	Counted as living area
1	Bath	5'6" x 8'3"	46 sq. ft	Yes
2	Deck	11'1" x 11'3"	125 sq. ft	No
3	Foyer	9'8" x 10'8"	103 sq. ft	Yes
4	Carport	13'0" x 20'9"	269 sq. ft	No
5	Living Room	20'6" x 19'3"	395 sq. ft	Yes
6	Laundry	8'0" x 12'4"	99 sq. ft	Yes
7	Porch	11'3" x 2'10"	32 sq. ft	No
8	Kitchen	10'6" x 12'4"	129 sq. ft	Yes
9	Dining Room	11'3" x 12'4"	139 sq. ft	Yes

Home data report

104 Chinquapin Circle, Daphne, Baldwin County, Alabama,
United States, 36526



Room dimensions

Floor 2

Total:972sqft Excluded: 0sqft

#		Dimensions	sqft	Counted as living area
10	Bath	10'6" x 4'7"	48 sq. ft	Yes
11	Bedroom	12'9" x 16'5"	210 sq. ft	Yes
12	Hall	20'7" x 4'7"	94 sq. ft	Yes
13	Bedroom	13'3" x 16'5"	217 sq. ft	Yes
14	Bath	10'6" x 4'10"	51 sq. ft	Yes
15	W.I.C.	3'9" x 5'3"	20 sq. ft	Yes
16	Primary Bedroom	16'6" x 11'3"	186 sq. ft	Yes

104 Chinquapin Circle, Daphne, Baldwin County, Alabama,
United States, 36526

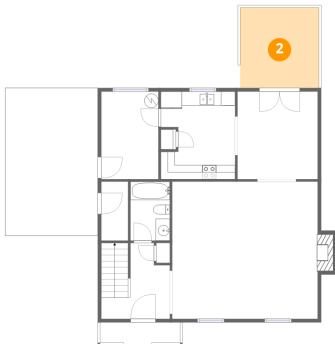
1 Floor 1 - Bath



Dimensions: 5'6" x 8'3"
Area: 46 sq. ft
Counted as living area: Yes

Heated: Yes
Finished: Yes
Enclosed: Yes
Contiguous: Yes
Permitted: Yes
Wet space: Yes
Addition: No
Conversion: No

2 Floor 1 - Deck



Dimensions: 11'1" x 11'3"
Area: 125 sq. ft
Counted as living area: No

Heated: No
Finished: No
Enclosed: No
Contiguous: Yes
Permitted: Yes
Wet space: No
Addition: No
Conversion: No

104 Chinquapin Circle, Daphne, Baldwin County, Alabama,
United States, 36526

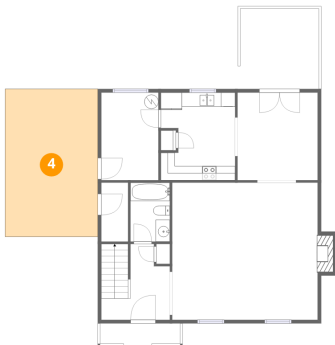
3 Floor 1 - Foyer



Dimensions: 9'8" x 10'8"
Area: 103 sq. ft
Counted as living area: Yes

Heated: Yes
Finished: Yes
Enclosed: Yes
Contiguous: Yes
Permitted: Yes
Wet space: No
Addition: No
Conversion: No

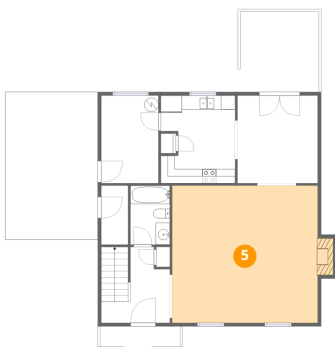
4 Floor 1 - Carport



Dimensions: 13'0" x 20'9"
Area: 269 sq. ft
Counted as living area: No

Heated: No
Finished: Yes
Enclosed: No
Contiguous: Yes
Permitted: Yes
Wet space: No
Addition: No
Conversion: No

5 Floor 1 - Living Room



Dimensions: 20'6" x 19'3"
Area: 395 sq. ft
Counted as living area: Yes

Heated: Yes
Finished: Yes
Enclosed: Yes
Contiguous: Yes
Permitted: Yes
Wet space: No
Addition: No
Conversion: No

104 Chinquapin Circle, Daphne, Baldwin County, Alabama,
United States, 36526

6 Floor 1 - Laundry



Dimensions: 8'0" x 12'4"
Area: 99 sq. ft
Counted as living area: Yes

Heated: Yes
Finished: Yes
Enclosed: Yes
Contiguous: Yes
Permitted: Yes
Wet space: No
Addition: No
Conversion: No

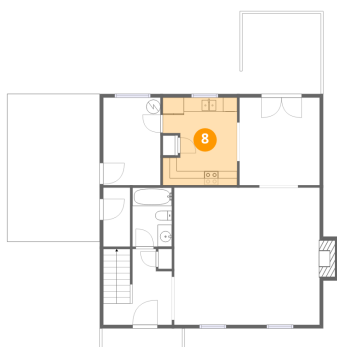
7 Floor 1 - Porch



Dimensions: 11'3" x 2'10"
Area: 32 sq. ft
Counted as living area: No

Heated: No
Finished: No
Enclosed: No
Contiguous: Yes
Permitted: Yes
Wet space: No
Addition: No
Conversion: No

8 Floor 1 - Kitchen



Dimensions: 10'6" x 12'4"
Area: 129 sq. ft
Counted as living area: Yes

Heated: Yes
Finished: Yes
Enclosed: Yes
Contiguous: Yes
Permitted: Yes
Wet space: No
Addition: No
Conversion: No

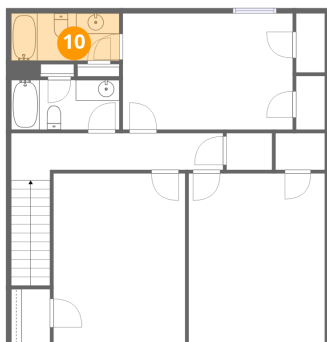
9 Floor 1 - Dining Room



Dimensions: 11'3" x 12'4"
Area: 139 sq. ft
Counted as living area: Yes

Heated: Yes
Finished: Yes
Enclosed: Yes
Contiguous: Yes
Permitted: Yes
Wet space: No
Addition: No
Conversion: No

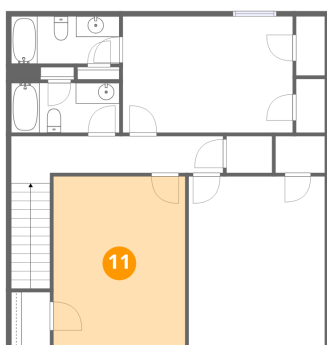
10 Floor 2 - Bath



Dimensions: 10'6" x 4'7"
Area: 48 sq. ft
Counted as living area: Yes

Heated: Yes
Finished: Yes
Enclosed: Yes
Contiguous: Yes
Permitted: Yes
Wet space: Yes
Addition: No
Conversion: No

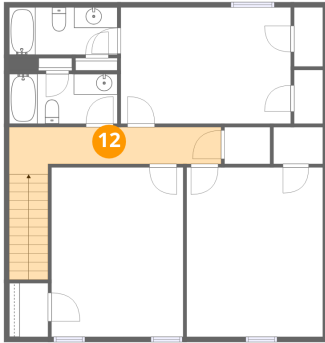
11 Floor 2 - Bedroom



Dimensions: 12'9" x 16'5"
Area: 210 sq. ft
Counted as living area: Yes

Heated: Yes
Finished: Yes
Enclosed: Yes
Contiguous: Yes
Permitted: Yes
Wet space: No
Addition: No
Conversion: No

12 Floor 2 - Hall



Dimensions: 20'7" x 4'7"
Area: 94 sq. ft
Counted as living area: Yes

Heated: Yes
Finished: Yes
Enclosed: Yes
Contiguous: Yes
Permitted: Yes
Wet space: No
Addition: No
Conversion: No

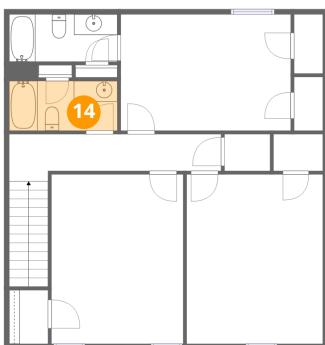
13 Floor 2 - Bedroom



Dimensions: 13'3" x 16'5"
Area: 217 sq. ft
Counted as living area: Yes

Heated: Yes
Finished: Yes
Enclosed: Yes
Contiguous: Yes
Permitted: Yes
Wet space: No
Addition: No
Conversion: No

14 Floor 2 - Bath

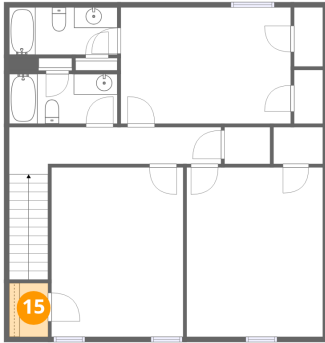


Dimensions: 10'6" x 4'10"
Area: 51 sq. ft
Counted as living area: Yes

Heated: Yes
Finished: Yes
Enclosed: Yes
Contiguous: Yes
Permitted: Yes
Wet space: Yes
Addition: No
Conversion: No

104 Chinquapin Circle, Daphne, Baldwin County, Alabama,
United States, 36526

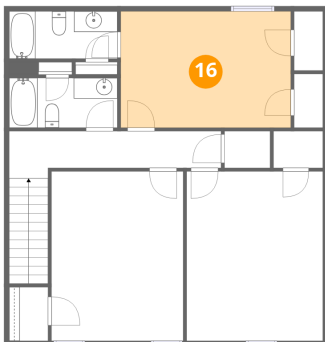
15 Floor 2 - W.I.C.



Dimensions: 3'9" x 5'3"
Area: 20 sq. ft
Counted as living area: Yes

Heated: Yes
Finished: Yes
Enclosed: Yes
Contiguous: Yes
Permitted: Yes
Wet space: No
Addition: No
Conversion: No

16 Floor 2 - Primary Bedroom



Dimensions: 16'6" x 11'3"
Area: 186 sq. ft
Counted as living area: Yes

Heated: Yes
Finished: Yes
Enclosed: Yes
Contiguous: Yes
Permitted: Yes
Wet space: No
Addition: No
Conversion: No