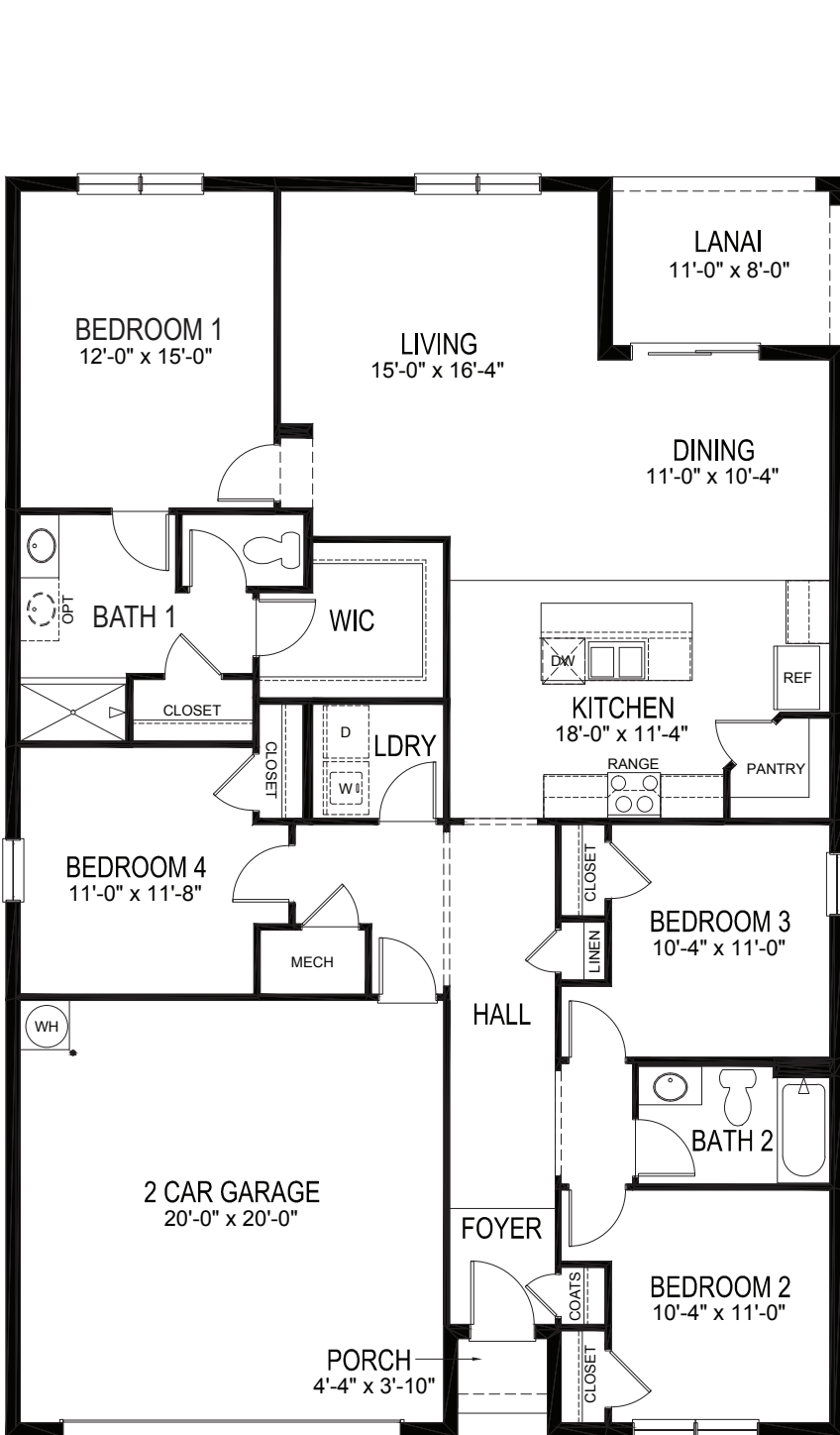




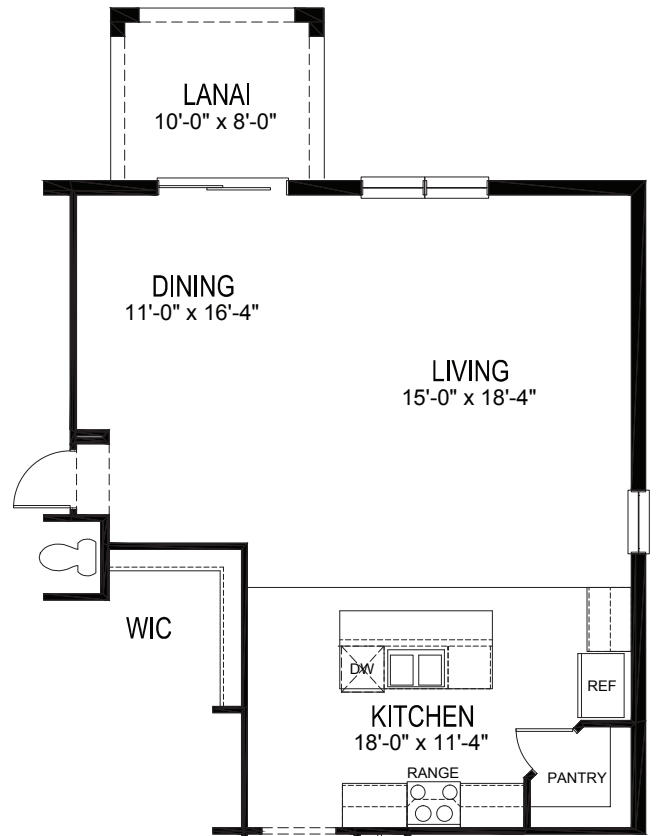
Cali

4 Bedroom, 2 Bath, 2-Car Garage, 1,828-1,916 Sq. Ft.

D.R. Horton is equal housing opportunity builder. Pictures, photographs, features, colors, drawings, floor plans, square footages and sizes are approximate for illustration purposes only and will vary from the homes as built. All drawings are the artist's concept. Certified Residential Contractor License Number CRC1327068



Cali - 1828



Opt. Lanai with Large Living Area
Cali - Extended - 1916