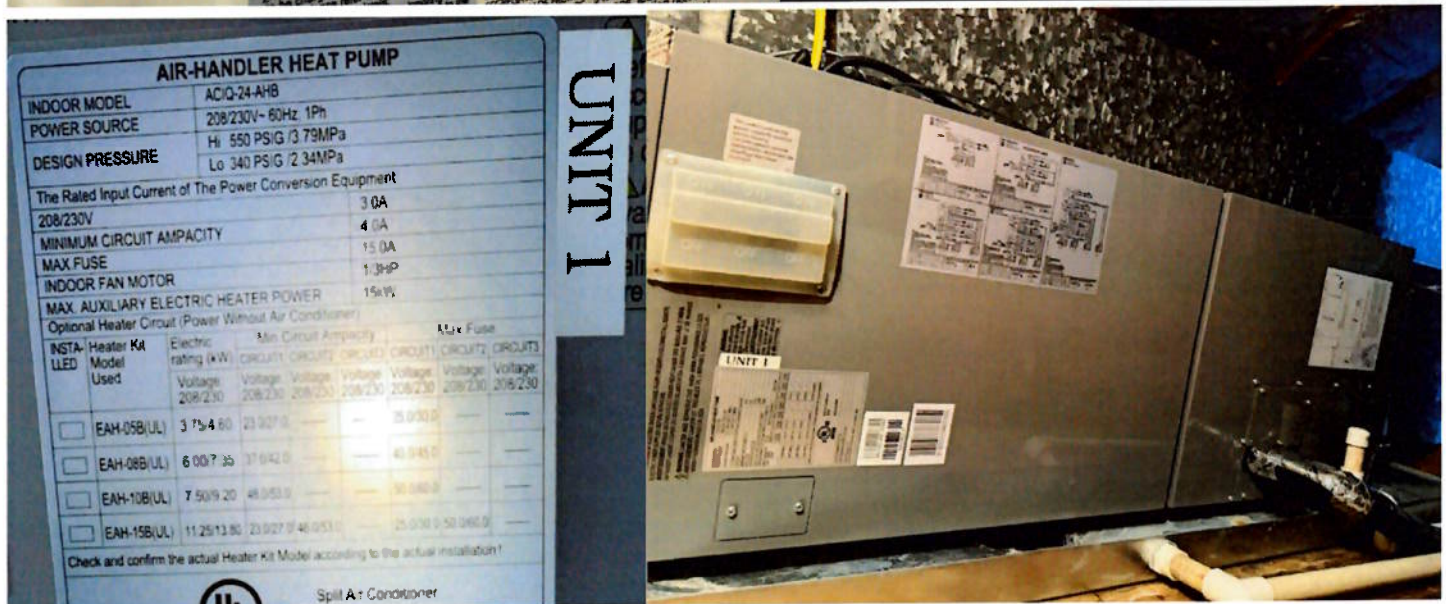


WHEATLAND CONDENSING UNITS						
Unit	Brand	Model	Tonnage	Type	Year	Location
1	ACIQ	ACIQ-24-HPB	2	HP	04/24	LIV/DIN/FNT BDR
2	GOODMAN	CLJ42-1C	3.5	COOL	09/06	KIT/BRK/COOPER
3	TRANE	TTR018D100A0	1.5	COOL	04/96	3RD FL BDR
4	PAYNE	PY4GNAB24060AATP	2	COOL	04/17	LIBRARY
5	TRANE	TTX030C100A3	2.5	COOL	02/96	MUSIC
6	TRANE	TTX040C100A1	4	COOL	07/94	LAKEVIEW/WHEATLAND

WHEATLAND AIR HANDLER UNITS						
Unit	Brand	Model	Tonnage	Type	Year	location
1	ACIQ	ACIQ-24-AHB	2	HP/5KW STR	04/24	LIV/DIN/FNT BDR
2	GOODMAN	ARUF049-00A-1B	3.5	COOL	09/06	KIT/BRK/COOPER
3	TRANE	TWH018B140A1	1.5	COOL	04/96	3RD FL BDR
4	PAYNE	PY4GNAB24060AATP	2	COOL	04/17	LIBRARY
5	TRANE	TW11030B140B0	2.5	10KW STR	02/96	MUSIC
6	TRANE	TWE048P130A0	4	15KW STR	07/94	LAKEVIEW/WHEATLAND

LAW OFFICE						
Unit	Model	Model	Tonnage	Type	Year	Location
1	HEIL	CH3012QKA2	2.5	HP	May-90	LAW OFFICE

LAW OFFICE						
Unit	Model	Model	Tonnage	Type	Year	Location
1	HEIL	UNKN	2.5	HP/5KW STR	May-90	LAW OFFICE





**UNIT 2**

MODEL NO. ARUF49-00A-18      SERIAL NO. 0601026993

MOTOR		160T EXTERNAL STATIC PRESSURE (INCHES) 0.3	MAXIMUM OUTLET TEMPERATURE 200 F
AMP	H/P	OR LEAK, 8 INCH CLEARANCE FROM CABINET, PLENUM AND DUCT, FOR INSTALLATION.	
3.95	1/2	SEE MANUAL CARRIER INSULATION R-VALUE = 4.2	

PART NO. SR1431012

208/230 VOLTS      60 HERTZ      1 PHASE

WHEN INSTALLING ONE OF THE ACCESSORY HEAT KITS, PERMANENTLY IDENTIFY THE MODEL ON THIS PLATE

MARK	HEATER KIT MODEL USED	W	H	CIRCUIT 1			CIRCUIT 2		
				H.A.	M.C.A.	M.O.P.	H.A.	M.C.A.	M.O.P.
	NO HEAT KIT	L	0/0	4	9/4.9	15/15			
	W/HK-R-03	L	10	8/12.5	18/21	20/20			
	W/HK-R-05(C)	L	17	1/19.8	26/30	30/30			
	W/HK-R-06	L	21	6/25.0	32/36	40/40			
	W/HK-R-08(C)	L	25	2/29.1	38/39	40			
	W/HK-R-10(C)	L	34	3/39.6	48/54	60			
	W/HK-R-15C	L	34	3/39.6	48/54	60/60	17	1/19.8	22/25
	W/HK-R-20C	L	34	3/39.6	48/54	60/60	34	3/39.6	43/49
	W/HK-R-21C	L	37	9/43.8	52/59	60/60	37	9/43.8	48/55
	W/HK-R3-15*	L	0/0	4	9/4.9	15/15	31	2/36.1	39/45
	W/HK-R3-20*	L	0/0	4	9/4.9	15/15	40	6/46.9	51/59

H.A.S. = MAXIMUM BLOWER SPEED  
 H.A. = HEATER AMPS  
 M.C.A. = MAXIMUM CIRCUIT AMPS  
 M.O.P. = MAXIMUM OVERCURRENT PROTECTION

\* CIRCUIT 1: SINGLE PHASE FOR AIRHANDLER  
 \* CIRCUIT 2: THREE PHASE FOR AIR/2 HEATER KIT

WARNING: HAZARD OF ELECTRIC SHOCK. DISCONNECT ALL POWER BEFORE REMOVING THIS PANEL. MORE THAN ONE DISCONNECT WILL BE REQUIRED TO DE-ENERGIZE EQUIPMENT SUPPLIED BY MORE THAN ONE BRANCH CIRCUIT.

AVERTENCIA: PELIGRO DE CHOQUE ELECTRICO.



**UNIT 3**

**XE 1000** MFR DATE 04/96

MOD. NO. TTR018D100A0 VOLTS 200/230  
 SERIAL NO. L18242DB PH 1 HZ 60  
 MINIMUM CIRCUIT AMPACITY 11.0 AMPS  
 OVERCURRENT PROTECTIVE DEVICE USA CANADA  
 RECOMMENDED FUSE / BREAKER (HACR) 15 15  
 MAX FUSE / BREAKER (HACR) 15 15  
 HCFC-22 3 LBS. 12 OZ. OR 1.70 Kg(m)  
 BAYFCCY 053A REQUIRED INDOORS FOR RATED PERFORMANCE

THE TRANE COMPANY  
 TYLER, TX 75711-9010 MADE IN USA OUTDOOR USE

COMPR. MOT. 8.0 FLA 200/230 V 45 LRA  
 O.D. MOT. .83 FLA 200/230 V 1/8 HP  
 M.E.A. NO.  
 DESIGN P88 - HIGH 300 LOW 300 F. I.D. R88



**UNIT 3**

American Standard Inc.  
 The Trane Company  
 Tyler, TX 75711-9010 Made in USA

TW1018B140A1 122149521 1/8 1.0 200-230 1/8  
 MODEL NO. SERIAL NO. MOTOR HP F.L. AMPS VOLTS PH

ELECTRICAL HEATER 208 OR 240V 1 Ph. 60 Hz  
 REFRIGERANT 22 ONLY TEST PRESSURE 300 PSI  
 UNLESS INDICATED "NA" ANY ONE OF THE FOLLOWING HEATERS MAY BE INSTALLED IN THIS UNIT. AN INSTALLER MUST MARK ONE APPROPRIATE BLOCK IN COLUMN A

A	HEATER MODEL	SUPPLY VOLTS	HP	HEATER AMPS	MIN BRANCH CIRCUIT AMPACITY	MAX FUSE OR HACR TYPE	LIST BREAKER
	NONE						
	USF ACCESSORY BAY 99 x 123						
	BAY96X1404	208 240	2.88 3.84	13.8 16	19 22	20 25	
	BAY96X1405	208 240	3.60 4.80	17.3 20	24 27	25 30	
	BAY96X1406	208 240	4.73 5.76	20.8 24	28 32	30 35	
	BAY96X1408	208 240	5.76 7.68	27.7 32	37 42	40 45	
	BAY96X1410	208 240	7.20 9.60	34.7 40	45 52	45 60	
	BAY96X1411	208 240	7.93 10.56	38.1 44	50 57	50 60	
B	HEATER MODEL	SUPPLY VOLTS	HP	HEATER AMPS	MIN BRANCH CIRCUIT AMPACITY	MAX OVERCURRENT DEVICE	
	CIRCUIT 1	208	NA	NA	NA	NA	
	BAY96X1414	240	NA	NA	NA	NA	
	CIRCUIT 2	208	NA	NA	NA	NA	
	BAY96X1411	240	7.93	24.7	32	35	
		240	10.56	28	37	40	



**UNIT 4**

RAYNE HEATING & COOLING  
 7310 West Mons Street  
 Indianapolis, IN 46231 U.S.A.

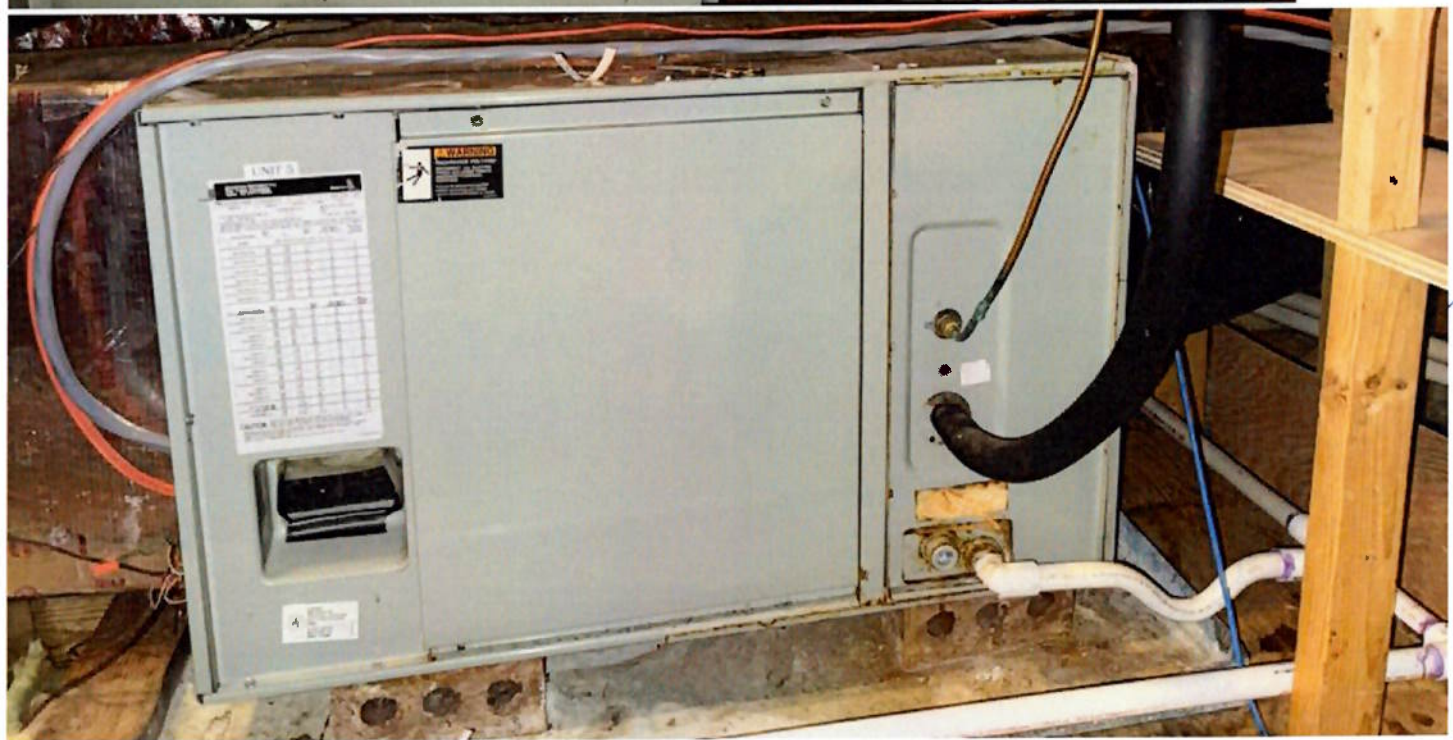
MODEL PY4GNAB2#060AATP  
 SERIAL / SERIE 1617C13027  
 FACTORY CHARGED WITH R-410A REFRIGERANT

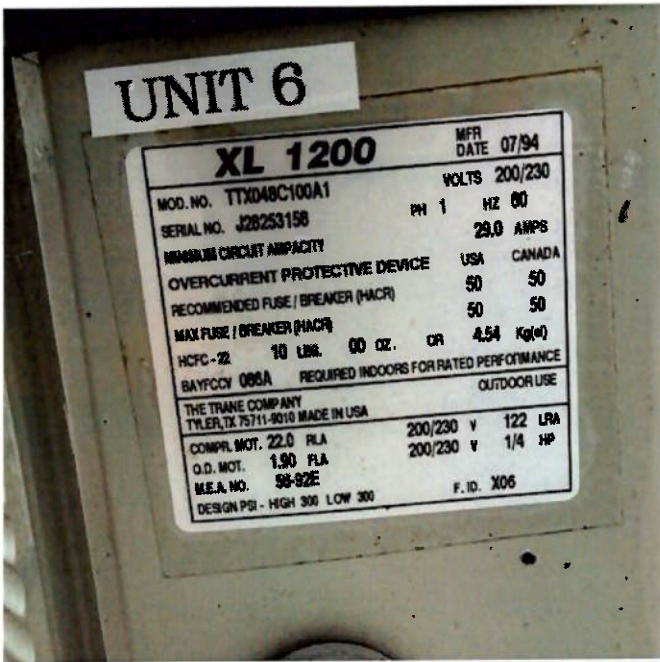
POWER SUPPLY	V	PH	60	HZ	MINIMUM CIRCUIT AMPACITY (MCA)	52	A'95	Minimum Disconnect Protection Device (Per MCA)	3	AMPS	
200/230											
PERMISSIBLE VOLTAGE AT UNIT	VOLTS AC	PH	HZ	FLA	LRA	FACTORY CHARGED	TEST PRESSURE GAGE				
	200/230	1	60	8.7	48	LBS 59 Kg 24	HI 40 / PSI 270 LO 25 / PSI 175				
COMPRESSOR	200/230	1	60	8.7	48						
MOTOR	200/230	1	60	0.6	10 (10)						
OUTDOOR FAN	200/230	1	60	3.8	12 (12)						
INDOOR FAN	200/230	1	60	0.85	10 (10)						
INDUCED DRAFT	200/230	1	60	0.85	10 (10)						
GAS INPUT / GAZ ENTREE (See Note Below)		BTU/HR									
GAS OUTPUT / GAZ SORTIE (See Note Below)		BTU/HR									
AIR TEMPERATURE RISE / AUGMENTATION DE LA TEMPERATURE DE L'AIR		°F									
DESIGN MAXIMUM OUTLET AIR TEMPERATURE / CONDU POUR UNE TEMPERATURE MAX D'AIR DE SORTIE DE		°F									
THERMAL EFFICIENCY		%									
MAX INLET GAS PRESSURE - PRESURE MAX D'ADMISSION DE GAZ		PSI									



UNIT 5

**XL 1200** MFR DATE 02/96  
MOD. NO. TTX030C100A3 VOLTS 200/230  
SERIAL NO. L065X7H7F PH 1 HZ 60  
MINIMUM CIRCUIT CAPACITY 17.0 AMPS  
OVERCURRENT PROTECTIVE DEVICE USA CANADA  
RECOMMENDED FUSE / BREAKER (HACR) 25 25  
MAX FUSE / BREAKER (HACR) 25 25  
HCFC - 22 7 LBS. 08 OZ. OR 3.40 Kg (w)  
BAYFCCY 069A REQUIRED INDOORS FOR RATED PERFORMANCE  
OUTDOOR USE  
THE TRANE COMPANY  
TYLER, TX 75711-5010 MADE IN USA  
COMPR. MOT. 12.0 FLA 200/230 V 65 LRA  
O.D. MOT. 1.50 FLA 200/230 V 1/5 HP  
M.E.A. NO. 56-92E F. ID. X08  
DESIGN PSI - HIGH 300 LOW 300





**UNIT 6**

Trane Company  
Tyler, TX 75711-9010

Model: TWED48P130A0    K25829734    1/2    3.3    200-230

PH 1    HZ 60    29.0 AMPS

OVERCURRENT PROTECTIVE DEVICE: USA 50, CANADA 50

RECOMMENDED FUSE / BREAKER (NACR): 50

MAX FUSE / BREAKER (NACR): 50

HCFD-22 10 LBS. 00 OZ. OR 4.54 Kg(±)

BAYPCY 006A REQUIRED INDOORS FOR RATED PERFORMANCE

THE TRANE COMPANY  
TYLER, TX 75711-9010 MADE IN USA

COMPL. MOT. 22.0 FLA    200/230 V 122 LRA

O.D. MOT. 1.90 FLA    200/230 V 1/4 HP

M.E.A. NO. 98-82E    F.T.D. X06

---

**UNIT 6**

Electric Heater-208 OR 240V, 60Hz, 1 PH OR 3 PH  
REFRIGERANT 22 ONLY TEST PRESSURE 300 PSI  
UNLESS INDICATED "HA" ANY ONE OF THE FOLLOWING HEATERS MAY BE INSTALLED IN THIS UNIT. INSTALLER MUST MARK ONE APPROPRIATE BLOCK IN COLUMN A.

B	TRANE HEATER MODEL	SUPPLY VOLTS	PHASE	KW	HEATER		MIN BRANCH CIRCUIT AMPS	MAX FUSE OR HACR TYPE CIRCUIT BREAKER	MFR. DATE	
					AMPS	FLA			06/95	
	NONE									
	USE ACCESSORY PLATE BAY 80 X 121									
	BAY9K1405	208 240	1	3.80 4.80	17.3 20	28 28	30 30	30 30	LOW	LOW
	BAY9K1406	208 240	1	4.33 5.78	20.8 24	30 34	35 35	35 35	LOW	LOW
	BAY9K1408	208 240	1	5.77 7.68	27.7 32	38 44	40 44	45 45	LOW	LOW
	BAY9K1410	208 240	1	7.21 8.90	34.7 40	48 54	50 60	60 60	LOW	LOW
	BAY9K1411	208 240	1	7.93 10.58	38.1 44	52 58	60 60	60 60	LOW	HI *1
	BAY9K3411	208 240	3	7.93 10.58	24.2 28	34 38	34 38	34 38	LOW	HI *1
	BAY9K3415	208 240	3	11.54 15.34	38 41.8	45 52	45 52	45 60	LOW	HI *1
A	TRANE HEATER MODEL	SUPPLY VOLTS		KW	HEATER AMPS	MIN BRANCH CIRCUIT AMPS	MAX OVERCURRENT DEVICE			
	CIRCUIT 1	208	1	7.21	34.7	48	50			
	BAY9K1415	240	1	8.90	40	54	60			
	CIRCUIT 2	208	1	4.33	20.8	28	30		LOW	HI *1
		240	1	5.78	24	30	30			
	CIRCUIT 1	208	1	7.21	34.7	48	50			
	BAY9K1419	240	1	8.90	40	54	60		LOW	HI *2
	CIRCUIT 2	208	1	7.20	34.7	43	45			
		240	1	8.90	40	50	60			
	CIRCUIT 1	208	1	7.21	34.7	48	50			
	BAY9K1421	240	1	8.88	41.8	52	60		LOW	HI *2
	CIRCUIT 2	208	1	11.52	48	60	60			



LAW OFFICE

DATE 5-200

**HEAT PUMP**

MODEL NO. CH30120KA2  
267. 000551

LISTED OUTDOOR SECTION OF HEAT PUMP SUB

STYLE NO. 12BH-000087AE	SERIAL NO. L902013331	MFR. NO. NCH09120KA2
-------------------------	-----------------------	----------------------

RATED VOLTAGE 208/230 PH 1 HZ 60  
VOLTAGE: MIN. 197 MAX. 253  
MAX. FUSE OR CKT. BKR. (HACR TYPE IN USA) 15 AMPS  
MINIMUM CIRCUIT AMPACITY: 9.9  
COMPRESSOR: HP PH FLA RLA LRA  
FAN: 1/8 1 9.57 1.3  
HEAT PUMP OUTPUT: 3600 WATTS COOLING  
3700 WATTS HEATING  
OUTDOOR UNIT SHIPPING CHARGE R22: 61 OZ.  
TOTAL OPERATING CHARGE [ ] OZ.  
TO DETERMINE TOTAL OPERATING CHARGE REFER TO TECH SHEET OR INSTALLATION INSTRUCTIONS  
TEST PRESSURE (PSIG): HIGH 310 LOW 300 HOCO LAVERGNE, TN, 37085  
OUTDOOR USE CONTROL BOX ACCESS 1053826

**WARNING**



# INVOICE

**FROM:**  
 O'Brien Appraisal Group  
 Ann Pool Redd  
 PO Box 1316  
 Clarksville, VA 23927-1316  
 Telephone Number: (434) 374-2958 Fax Number:

INVOICE NUMBER	
VAA26091	
DATES	
Invoice Date:	02/18/2026
Due Date:	02/18/2026
REFERENCE	
Internal Order #:	VAA26091
Lender Case #:	
Client File #:	
FHA/VA Case #:	
Main File # on form:	VAA26091
Other File # on form:	
Federal Tax ID:	
Employer ID:	81-1870833

**TO:**  
 Karin Kuhn  
  
 E-Mail:  
 Telephone Number: Fax Number:  
 Alternate Number:

**DESCRIPTION**

Lender: N/A Client: Karin Kuhn  
 Purchaser/Borrower:  
 Property Address: 115 Dan Cir  
 City: Clarksville  
 County: Mecklenburg State: VA Zip: 23927  
 Legal Description:

**FEES**

**AMOUNT**

Sketch	200.00
<b>SUBTOTAL</b>	
	200.00

**PAYMENTS**

**AMOUNT**

Check #:	Date:	Description:	
Check #:	Date:	Description:	
Check #:	Date:	Description:	
<b>SUBTOTAL</b>			0
<b>TOTAL DUE</b>			<b>\$ 200.00</b>

---

**Delivery notification for 115 Dan Cir, Clarksville, VA 23927**

1 message

---

**Precision Vue** <tlee@precisionvuellc.com>  
Reply-To: Precision Vue <tlee@precisionvuellc.com>  
To: karinkuhnrealtor@gmail.com

Wed, Mar 18, 2026 at 10:34 PM



Hello Karin Kuhn,

Your video is attached!

Your content for [115 Dan Cir, Clarksville, VA 23927](#) is ready for download! Please use the link below to download and access your content:

**Download Link:** <https://precision-vue-llc.aryeo.com/listings/019ce948-94f0-733d-b1cb-525774eee1cc/download-center>

This listing also includes a property website. Please login to your account to customize them further.

**Branded Property Website:** <https://precision-vue-llc.aryeo.com/sites/115-dan-cir-clarksville-va-23927-22916754/branded>

**Unbranded Property Website:** <https://precision-vue-llc.aryeo.com/sites/rjpaplay/unbranded>

This listing also includes interactive content URL(s). Please login to your account to customize them further.

**Branded Interactive Content:** <https://my.matterport.com/show/?m=33SNpu83VKN>

**Unbranded Interactive Content:** <https://my.matterport.com/show/?m=33SNpu83VKN>

If you haven't logged into your account before, you will receive a secure account activation email with your access.

Thank you for your business,  
Precision Vue LLC

 **Download the Precision Vue LLC App Today!**

Access your orders & media, from anywhere.



[Download Center](#)

[Login to Account](#)

---

© 2026. All rights reserved.