

3728 Marina Dr, #7 (Lake Worth) Like new & Affordable!



Reasons that you'll regret if you let this house pass...

Step into your future home in the Spring Manor 55+ community, situated in the Lake Worth area (with lake view). This like-new 2023 gem, 2-bed, 2-bath, 896 SF, offers a fantastic home that is move-in ready and priced to sell. As you walk in, the open floor plan immediately draws you into the heart of the home, where the kitchen, living, and breakfast areas converge. The kitchen features matched appliances, including a refrigerator, range/oven with venthood, microwave, and dishwasher, together with a large, deep double SS sink w/modern fixtures as well as separate pantry with plenty of shelving. Kitchen island has additional cabinets & breakfast bar. The primary bedroom comes complete with a large walk-in closet and ensuite bath. The ensuite bath has double sinks, built-in cabinets, brushed nickel & oil-rubbed-bronze hardware, and a separate step-in shower with convenient seating. There is a separate laundry area with shelving (washer/dryer convey). The home has luxury vinyl plank flooring, together with base & crown molding as well as modern fixtures throughout. Imagine relaxing on the large covered 13 x 6 front porch (with lakeview) or the 9x6 back patio, ideal for entertaining guests, simply unwinding, or offering respite in the Texas heat. The home is in a small mfg home community with secluded area and large shade trees plus 2-car parking – a cozy neighborhood near the lake with great nearby features. The home comes fully equipped including clothes washer & dryer! Additional features include modern decor, an efficient HVAC system - R410-A/SEER 14.3/2.5-ton unit with smart thermostat, double-pane low-e windows, storm doors, ceiling fans, and superior construction with 2x6 studs exterior and solid wood doors thru-out. Walking distance to Lake Worth Boat & Ski club (fishing, boating, etc.) as well as Marina Park. Additionally, the iconic Rayl Family Park is nearby - a must visit destination. For cash purchase, total estimated costs ~\$920 per month + utilities. For loan - less than ~\$1490 per month (which includes \$825/mo lot lease)! Some photos may be virtually staged.

Exclusions: TV mount(s) **Conveyance:** all appliances (refrigerator, dishwasher, microwave, range); window blinds.

Virtual Tour, photos, & 3d-walkthrough: <https://www.seetheproperty.com/491079>

Lender List : <https://realtysidebyside.com/wp-content/uploads/2026/02/Lender-List-Thoughts-about-purchasing-a-mfg-home-in-a-community.pdf>

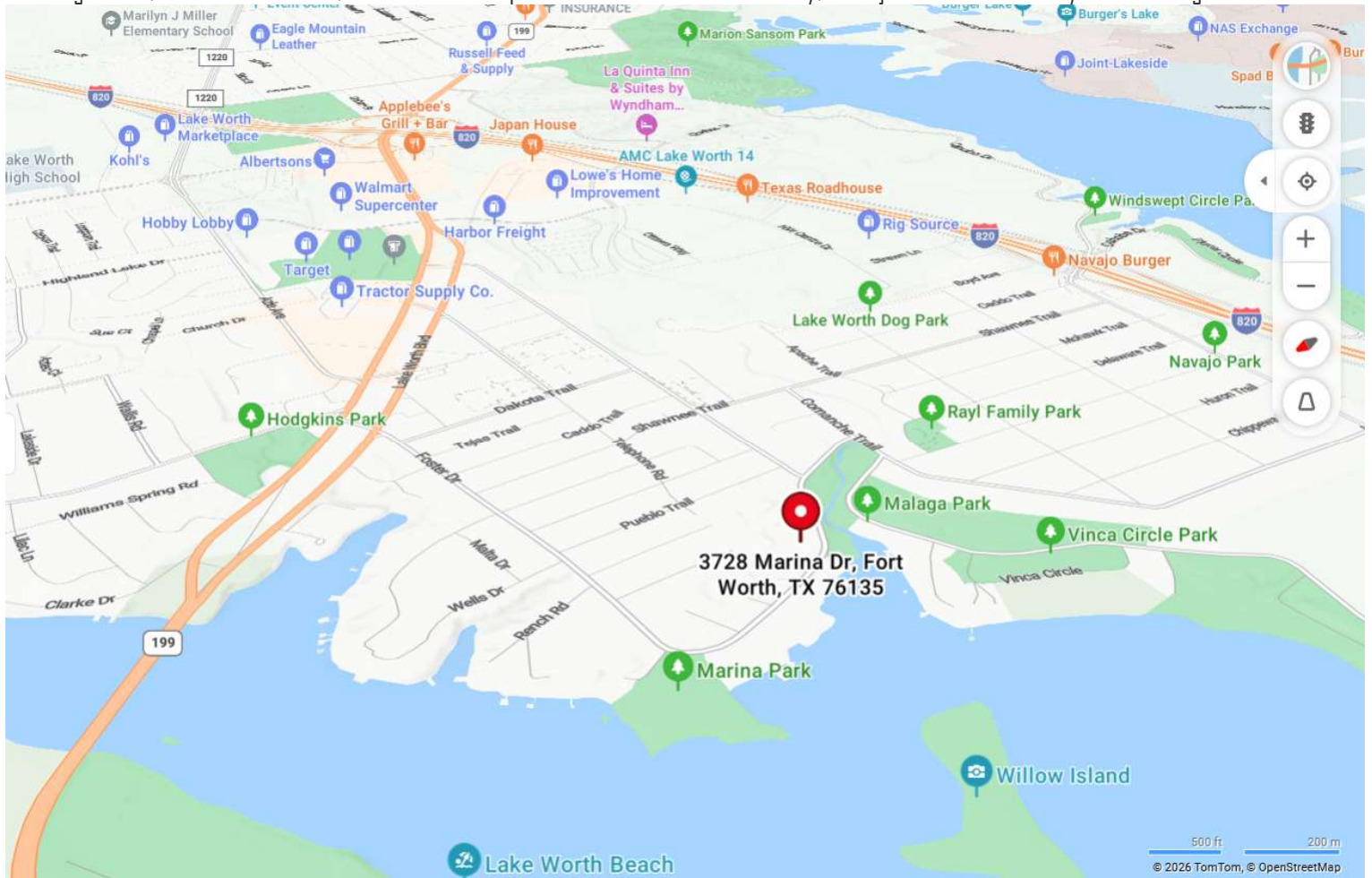
Spring Manor Rules & Regulations + Residency app: <https://realtysidebyside.com/wp-content/uploads/2026/03/Spring-Manor-RR-Res-App.pdf>



SCAN ME

Location:

- Minutes from BNSF railroad, Bell Helicopter, DFW Airport, and many other [major DFW employers](https://www.star-telegram.com/news/business/fort-worth/article314748593.html) (<https://www.star-telegram.com/news/business/fort-worth/article314748593.html>)
- Quick access to Hwys I-820 and SH-199 nearby; ~20 mins to downtown Fort Worth; ~40 mins to DFW Int'l Airport
- Walking distance to [Lake Worth Boat & Ski club](https://www.lakeworthtx.org/parks-and-recreation/pages/rayl-family-park) (events, fishing, boating, swimming, ballroom, picnic spots, etc.), Reynolds Park, as well as [Marina Park](https://www.yelp.com/biz/marina-park-lake-worth) (<https://www.yelp.com/biz/marina-park-lake-worth>). Additionally, the iconic [Rayl Family Park](https://www.lakeworthtx.org/parks-and-recreation/pages/rayl-family-park) (<https://www.lakeworthtx.org/parks-and-recreation/pages/rayl-family-park>) is nearby - a must visit destination. Also, be sure to checkout Malaga Park, Vinca Circle Park, and a fantastic place for reflection & serenity, Navajo Park - all nearby and walking distance.



Location:

Lake view (w/Lake Worth Boat & Ski walking distance)

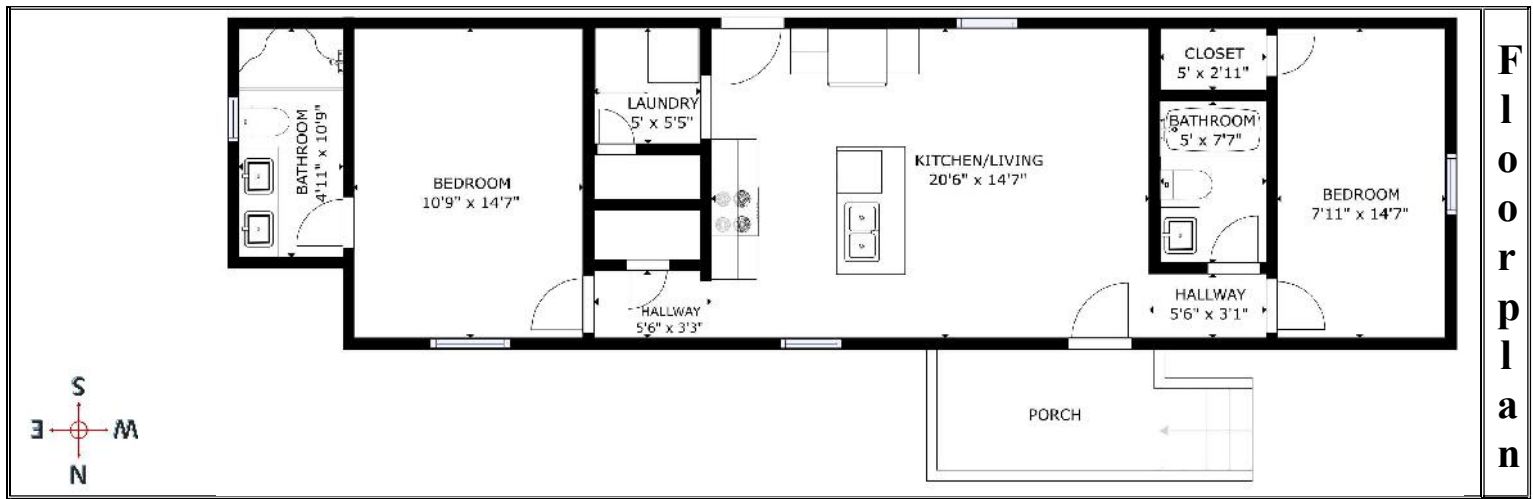


Marina Park (walking distance)



Rayl Family Park (nearby)





Features & Upgrades:

This home has great curb appeal, fantastic floorplan, and is move-in ready. Don't miss this GREAT house!

Structural:

- Energy efficiencies – dual pane low-e windows; ceiling fans; storm doors
- Roof is 3yo; R410-A/SEER 14.3/2.5-ton HVAC w/smart thermostat

Notable features*:

- Floorplan - 2-bed/2-bath; living, kitchen, pantry, breakfast, laundry; 896 sq-ft - open floorplan
- Kitchen – includes matched black appliances (including refrigerator, range/oven + venthood, dishwasher, microwave)
- Kitchen – island includes double SS sink + dishwasher + breakfast bar
- Kitchen – lots of quality built-in cabinets, tastefully painted with modern decor
- Separate laundry area with shelving and includes washer & dryer
- Living room - large 14 x 11 open space
- Base & crown molding throughout the home
- Bright lighting with LED lights throughout; low-e/double pane windows with blinds throughout
- Flooring is luxury vinyl plank throughout
- Master Bed - huge walkin closet with lots of shelving; ensuite bath
- Ensuite bath - double sink; step-in shower w/seating
- Laundry has shelving + washer/dryer hookups; 200 AMP breaker box; clothes washer/dryer convey with the property
- Large 13 x 6 covered porch with motion-sensor security lighting; 9x6 back patio; fantastic areas for entertainment or relaxation! Lake view from front porch and shaded property with large trees behind.
- 2-car parking
- solar shades on all windows
- storm doors front and back

* buyer's need to verify all features, measurements, taxes, easements, & school info.

Manufactured home on leased land - \$825 per month. This type loan requires a lender willing to do chattel loans - ask listing agent! Low taxes! (~\$530/yr) Very affordable for the DFW area! **For cash purchase, total estimated costs ~\$920 per month + utilities.** For loans - less than \$1490 per month assumes qualification w lender at 5% down & 25-yr loan @ ~8.5% interest rate. No rental or lease of homes allowed in the subdivision. See Community Guidelines.

Make an offer today!