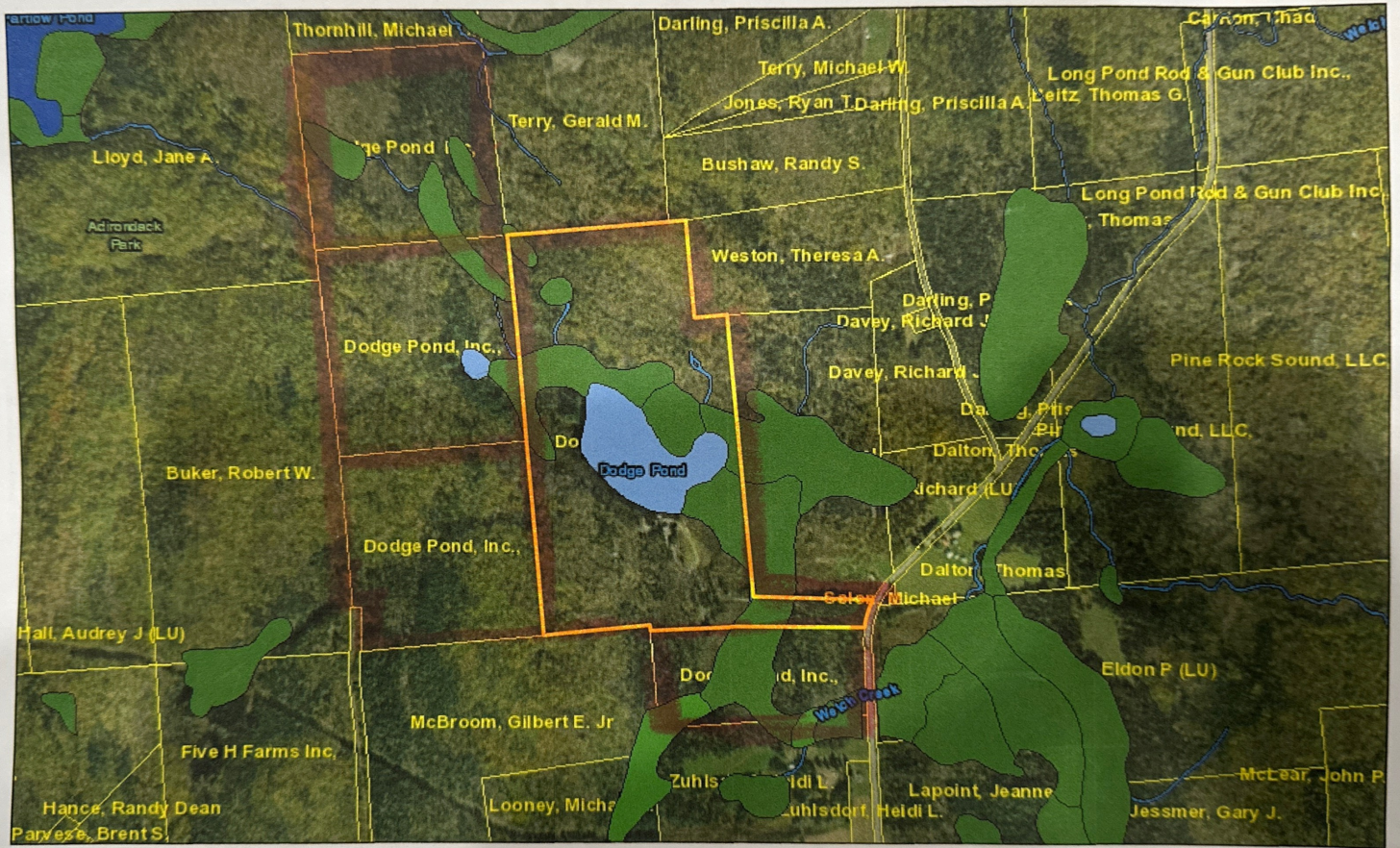
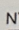


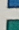






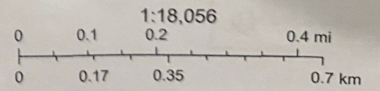
# Dodge Pond MAPS



April 29, 2025

NY Wetlands

- |   |                                   |   |                 |   |          |
|---|-----------------------------------|---|-----------------|---|----------|
|  | Freshwater Emergent Wetland       |  | Freshwater Pond |  | Other    |
|  | Freshwater Forested/Shrub Wetland |  | Lake            |  | Riverine |
|  | Estuarine and Marine Wetland      |   |                 |   |          |
|  | Estuarine and Marine Deepwater    |   |                 |   |          |



NYS Office of Information Technology Services Geospatial Data Services,  
 nysgis@its.ny.gov, 518-242-5029, Esri, HERE, Garmin, (c) OpenStreetMap