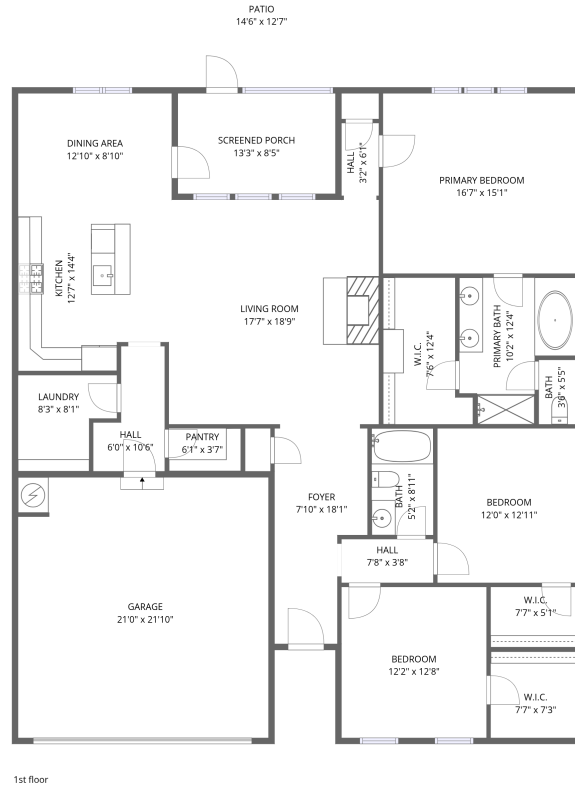


Home data report

30246 Persimmon Drive, Spanish Fort, Baldwin County,
Alabama, United States, 36527



Total Area: 1897 sq. ft

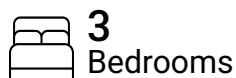
1st Floor: 1897 sq. ft

Excluded: Garage 458 sq. ft, Screened porch 111 sq. ft, Patio 182 sq. ft, Walls: 144 sq. ft

Property summary



1
Floors



3
Bedrooms



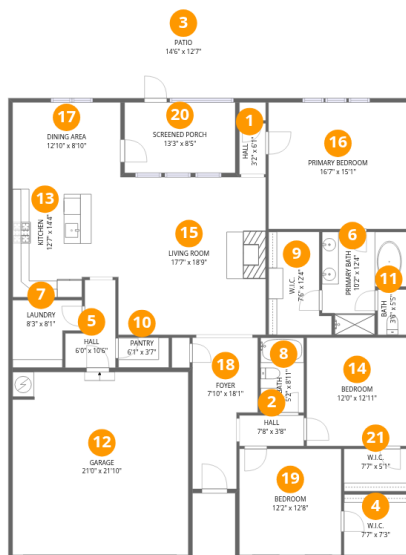
2
Bathrooms



1
Garages

Home data report

30246 Persimmon Drive, Spanish Fort, Baldwin County, Alabama, United States, 36527



Room dimensions

Floor 1

Total:1897sqft Excluded: 751sqft

#		Dimensions	sqft	Counted as living area
1	Hall	3'2" x 6'1"	19 sq. ft	Yes
2	Hall	7'8" x 3'8"	28 sq. ft	Yes
3	Patio	14'6" x 12'7"	182 sq. ft	No
4	W.I.C.	7'7" x 7'3"	55 sq. ft	Yes
5	Hall	6'0" x 10'6"	63 sq. ft	Yes
6	Primary Bath	10'2" x 12'4"	125 sq. ft	Yes
7	Laundry	8'3" x 8'1"	67 sq. ft	Yes
8	Bath	5'2" x 8'11"	46 sq. ft	Yes
9	W.I.C.	7'6" x 12'4"	93 sq. ft	Yes
10	Pantry	6'1" x 3'7"	22 sq. ft	Yes
11	Bath	3'6" x 5'5"	19 sq. ft	Yes

Home data report

**30246 Persimmon Drive, Spanish Fort, Baldwin County,
Alabama, United States, 36527**

#		Dimensions	sqft	Counted as living area
12	Garage	21'0" x 21'10"	458 sq. ft	No
13	Kitchen	12'7" x 14'4"	180 sq. ft	Yes
14	Bedroom	12'0" x 12'11"	156 sq. ft	Yes
15	Living Room	17'7" x 18'9"	329 sq. ft	Yes
16	Primary Bedroom	16'7" x 15'1"	251 sq. ft	Yes
17	Dining Area	12'10" x 8'10"	114 sq. ft	Yes
18	Foyer	7'10" x 18'1"	141 sq. ft	Yes
19	Bedroom	12'2" x 12'8"	153 sq. ft	Yes
20	Screened Porch	13'3" x 8'5"	111 sq. ft	No
21	W.I.C.	7'7" x 5'1"	38 sq. ft	Yes

30246 Persimmon Drive, Spanish Fort, Baldwin County,
Alabama, United States, 36527

1 Floor 1 - Hall



Dimensions: 3'2" x 6'1"
Area: 19 sq. ft
Counted as living area: Yes

Heated: Yes
Finished: Yes
Enclosed: Yes
Contiguous: Yes
Permitted: Yes
Wet space: No
Addition: No
Conversion: No

2 Floor 1 - Hall



Dimensions: 7'8" x 3'8"
Area: 28 sq. ft
Counted as living area: Yes

Heated: Yes
Finished: Yes
Enclosed: Yes
Contiguous: Yes
Permitted: Yes
Wet space: No
Addition: No
Conversion: No

30246 Persimmon Drive, Spanish Fort, Baldwin County,
Alabama, United States, 36527

3 Floor 1 - Patio



Dimensions: 14'6" x 12'7"
Area: 182 sq. ft
Counted as living area: No

Heated: No
Finished: No
Enclosed: No
Contiguous: Yes
Permitted: Yes
Wet space: No
Addition: No
Conversion: No

4 Floor 1 - W.I.C.



Dimensions: 7'7" x 7'3"
Area: 55 sq. ft
Counted as living area: Yes

Heated: Yes
Finished: Yes
Enclosed: Yes
Contiguous: Yes
Permitted: Yes
Wet space: No
Addition: No
Conversion: No

5 Floor 1 - Hall



Dimensions: 6'0" x 10'6"
Area: 63 sq. ft
Counted as living area: Yes

Heated: Yes
Finished: Yes
Enclosed: Yes
Contiguous: Yes
Permitted: Yes
Wet space: No
Addition: No
Conversion: No

30246 Persimmon Drive, Spanish Fort, Baldwin County,
Alabama, United States, 36527

6 Floor 1 - Primary Bath



Dimensions: 10'2" x 12'4"
Area: 125 sq. ft
Counted as living area: Yes

Heated: Yes
Finished: Yes
Enclosed: Yes
Contiguous: Yes
Permitted: Yes
Wet space: Yes
Addition: No
Conversion: No

7 Floor 1 - Laundry



Dimensions: 8'3" x 8'1"
Area: 67 sq. ft
Counted as living area: Yes

Heated: Yes
Finished: Yes
Enclosed: Yes
Contiguous: Yes
Permitted: Yes
Wet space: No
Addition: No
Conversion: No

8 Floor 1 - Bath



Dimensions: 5'2" x 8'11"
Area: 46 sq. ft
Counted as living area: Yes

Heated: Yes
Finished: Yes
Enclosed: Yes
Contiguous: Yes
Permitted: Yes
Wet space: Yes
Addition: No
Conversion: No

30246 Persimmon Drive, Spanish Fort, Baldwin County,
Alabama, United States, 36527

9 Floor 1 - W.I.C.



Dimensions: 7'6" x 12'4"
Area: 93 sq. ft
Counted as living area: Yes

Heated: Yes
Finished: Yes
Enclosed: Yes
Contiguous: Yes
Permitted: Yes
Wet space: No
Addition: No
Conversion: No

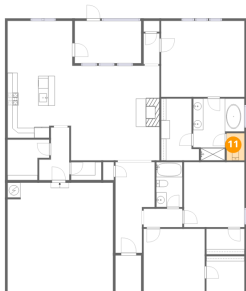
10 Floor 1 - Pantry



Dimensions: 6'1" x 3'7"
Area: 22 sq. ft
Counted as living area: Yes

Heated: Yes
Finished: Yes
Enclosed: Yes
Contiguous: Yes
Permitted: Yes
Wet space: No
Addition: No
Conversion: No

11 Floor 1 - Bath

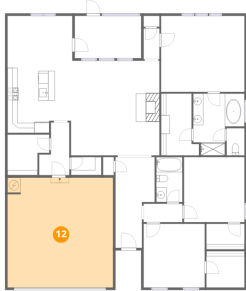


Dimensions: 3'6" x 5'5"
Area: 19 sq. ft
Counted as living area: Yes

Heated: Yes
Finished: Yes
Enclosed: Yes
Contiguous: Yes
Permitted: Yes
Wet space: Yes
Addition: No
Conversion: No

30246 Persimmon Drive, Spanish Fort, Baldwin County,
Alabama, United States, 36527

12 Floor 1 - Garage



Dimensions: 21'0" x 21'10"
Area: 458 sq. ft
Counted as living area: No

Heated: No
Finished: No
Enclosed: Yes
Contiguous: Yes
Permitted: Yes
Wet space: No
Addition: No
Conversion: No

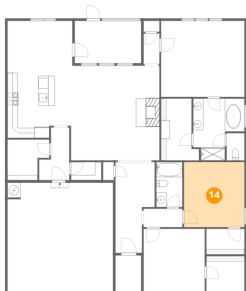
13 Floor 1 - Kitchen



Dimensions: 12'7" x 14'4"
Area: 180 sq. ft
Counted as living area: Yes

Heated: Yes
Finished: Yes
Enclosed: Yes
Contiguous: Yes
Permitted: Yes
Wet space: No
Addition: No
Conversion: No

14 Floor 1 - Bedroom

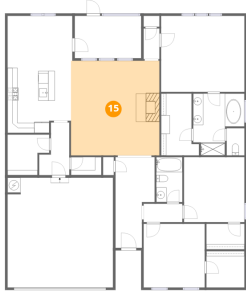


Dimensions: 12'0" x 12'11"
Area: 156 sq. ft
Counted as living area: Yes

Heated: Yes
Finished: Yes
Enclosed: Yes
Contiguous: Yes
Permitted: Yes
Wet space: No
Addition: No
Conversion: No

30246 Persimmon Drive, Spanish Fort, Baldwin County,
Alabama, United States, 36527

15 Floor 1 - Living Room



Dimensions: 17'7" x 18'9"
Area: 329 sq. ft
Counted as living area: Yes

Heated: Yes
Finished: Yes
Enclosed: Yes
Contiguous: Yes
Permitted: Yes
Wet space: No
Addition: No
Conversion: No

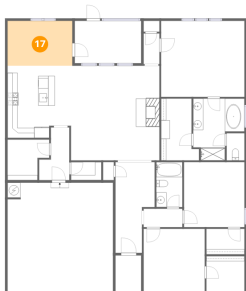
16 Floor 1 - Primary Bedroom



Dimensions: 16'7" x 15'1"
Area: 251 sq. ft
Counted as living area: Yes

Heated: Yes
Finished: Yes
Enclosed: Yes
Contiguous: Yes
Permitted: Yes
Wet space: No
Addition: No
Conversion: No

17 Floor 1 - Dining Area



Dimensions: 12'10" x 8'10"
Area: 114 sq. ft
Counted as living area: Yes

Heated: Yes
Finished: Yes
Enclosed: Yes
Contiguous: Yes
Permitted: Yes
Wet space: No
Addition: No
Conversion: No

30246 Persimmon Drive, Spanish Fort, Baldwin County,
Alabama, United States, 36527

18 Floor 1 - Foyer



Dimensions: 7'10" x 18'1"
Area: 141 sq. ft
Counted as living area: Yes

Heated: Yes
Finished: Yes
Enclosed: Yes
Contiguous: Yes
Permitted: Yes
Wet space: No
Addition: No
Conversion: No

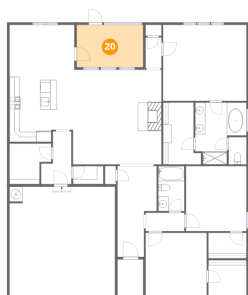
19 Floor 1 - Bedroom



Dimensions: 12'2" x 12'8"
Area: 153 sq. ft
Counted as living area: Yes

Heated: Yes
Finished: Yes
Enclosed: Yes
Contiguous: Yes
Permitted: Yes
Wet space: No
Addition: No
Conversion: No

20 Floor 1 - Screened Porch



Dimensions: 13'3" x 8'5"
Area: 111 sq. ft
Counted as living area: No

Heated: No
Finished: No
Enclosed: No
Contiguous: Yes
Permitted: Yes
Wet space: No
Addition: No
Conversion: No

Home data report

**30246 Persimmon Drive, Spanish Fort, Baldwin County,
Alabama, United States, 36527**

21 Floor 1 - W.I.C.



Dimensions: 7'7" x 5'1"
Area: 38 sq. ft
Counted as living area: Yes

Heated: Yes
Finished: Yes
Enclosed: Yes
Contiguous: Yes
Permitted: Yes
Wet space: No
Addition: No
Conversion: No