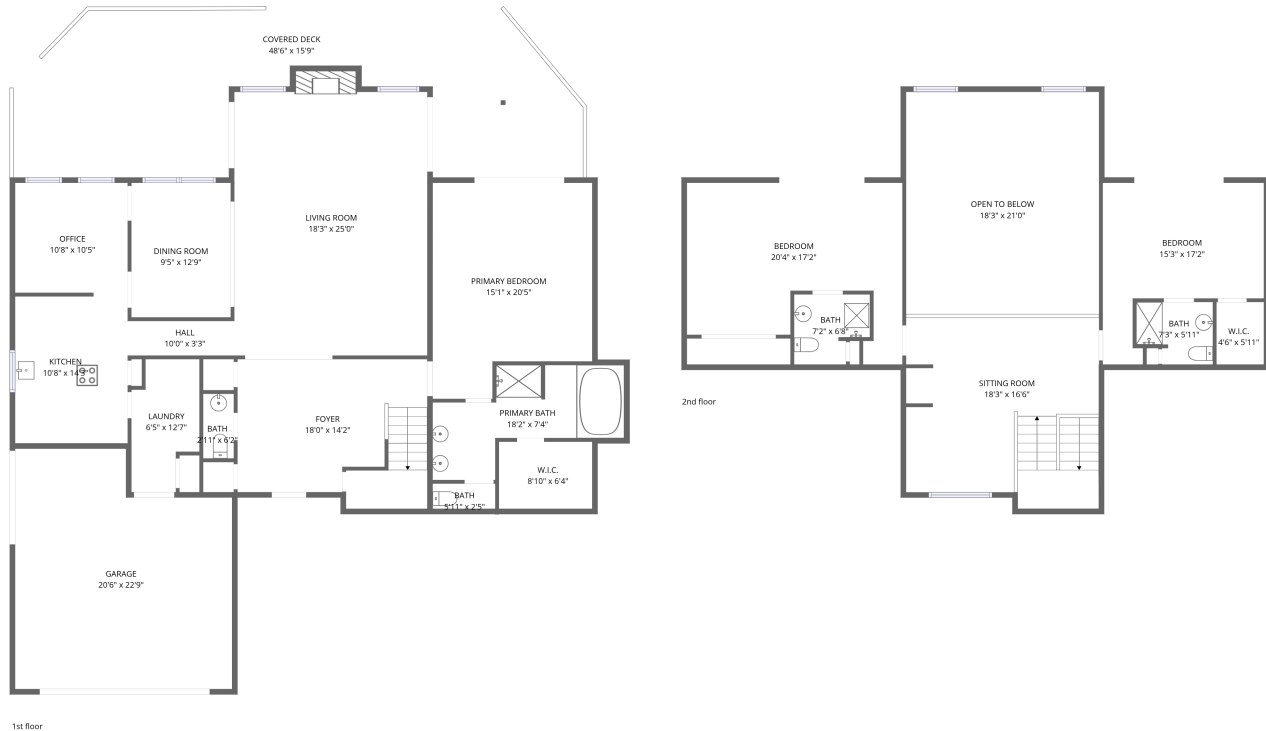


Home data report

503 Ridgewood Drive, Daphne, Baldwin County, Alabama, United States, 36526



Total Area: 2712 sq. ft

1st Floor: 1767 sq. ft, 2nd Floor: 945 sq. ft

Excluded: Garage 421 sq. ft, Covered deck 613 sq. ft, Fireplace 13 sq. ft, Open to below 384 sq. ft, Walls: 220 sq. ft

Property summary



Home data report

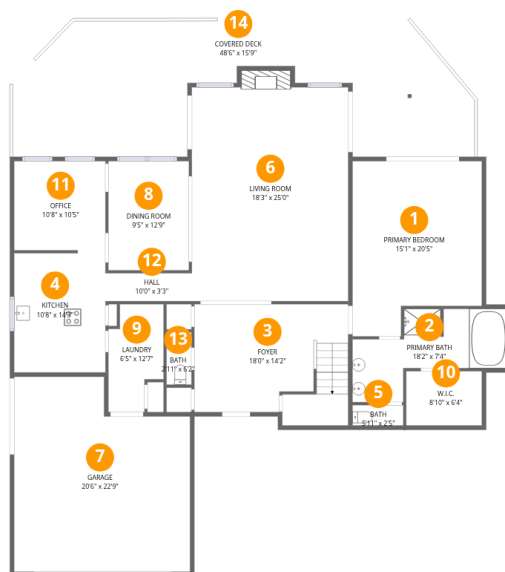
503 Ridgewood Drive, Daphne, Baldwin County, Alabama, United States, 36526

 **1**
Half baths

 **1**
Garages

Home data report

503 Ridgewood Drive, Daphne, Baldwin County, Alabama, United States, 36526



Room dimensions

Floor 1

Total:1767sqft

Excluded: 1047sqft

#		Dimensions	sqft	Counted as living area
1	Primary Bedroom	15'1" x 20'5"	309 sq. ft	Yes
2	Primary Bath	18'2" x 7'4"	133 sq. ft	Yes
3	Foyer	18'0" x 14'2"	255 sq. ft	Yes
4	Kitchen	10'8" x 14'3"	152 sq. ft	Yes
5	Bath	5'11" x 2'5"	14 sq. ft	Yes
6	Living Room	18'3" x 25'0"	456 sq. ft	Yes
7	Garage	20'6" x 22'9"	467 sq. ft	No
8	Dining Room	9'5" x 12'9"	120 sq. ft	Yes
9	Laundry	6'5" x 12'7"	81 sq. ft	Yes
10	W.I.C.	8'10" x 6'4"	56 sq. ft	Yes
11	Office	10'8" x 10'5"	110 sq. ft	Yes

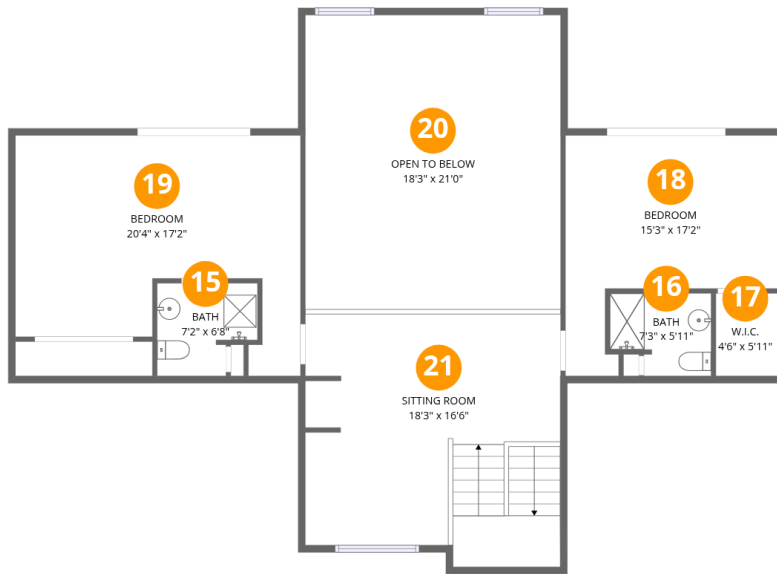
Home data report

503 Ridgewood Drive, Daphne, Baldwin County, Alabama, United States, 36526

#		Dimensions	sqft	Counted as living area
12	Hall	10'0" x 3'3"	33 sq. ft	Yes
13	Bath	2'11" x 6'2"	18 sq. ft	Yes
14	Covered Deck	48'6" x 15'9"	765 sq. ft	No

Home data report

503 Ridgewood Drive, Daphne, Baldwin County, Alabama, United States, 36526



Room dimensions

Floor 2

Total:945sqft

Excluded: 384sqft

#		Dimensions	sqft	Counted as living area
15	Bath	7'2" x 6'8"	48 sq. ft	Yes
16	Bath	7'3" x 5'11"	43 sq. ft	Yes
17	W.I.C.	4'6" x 5'11"	27 sq. ft	Yes
18	Bedroom	15'3" x 17'2"	262 sq. ft	Yes
19	Bedroom	20'4" x 17'2"	350 sq. ft	Yes
20	Open To Below	18'3" x 21'0"	384 sq. ft	No
21	Sitting Room	18'3" x 16'6"	301 sq. ft	Yes

1 Floor 1 - Primary Bedroom



Dimensions: 15'1" x 20'5"
Area: 309 sq. ft
Counted as living area: Yes

Heated: Yes
Finished: Yes
Enclosed: Yes
Contiguous: Yes
Permitted: Yes
Wet space: No
Addition: No
Conversion: No

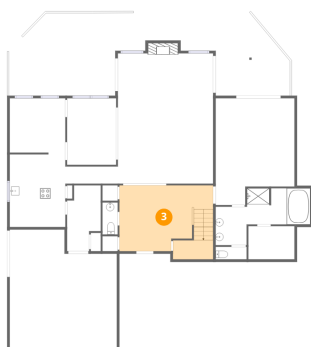
2 Floor 1 - Primary Bath



Dimensions: 18'2" x 7'4"
Area: 133 sq. ft
Counted as living area: Yes

Heated: Yes
Finished: Yes
Enclosed: Yes
Contiguous: Yes
Permitted: Yes
Wet space: Yes
Addition: No
Conversion: No

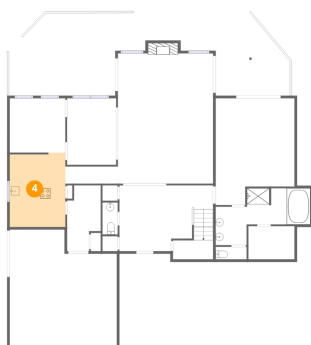
3 Floor 1 - Foyer



Dimensions: 18'0" x 14'2"
Area: 255 sq. ft
Counted as living area: Yes

Heated: Yes
Finished: Yes
Enclosed: Yes
Contiguous: Yes
Permitted: Yes
Wet space: No
Addition: No
Conversion: No

4 Floor 1 - Kitchen



Dimensions: 10'8" x 14'3"
Area: 152 sq. ft
Counted as living area: Yes

Heated: Yes
Finished: Yes
Enclosed: Yes
Contiguous: Yes
Permitted: Yes
Wet space: No
Addition: No
Conversion: No

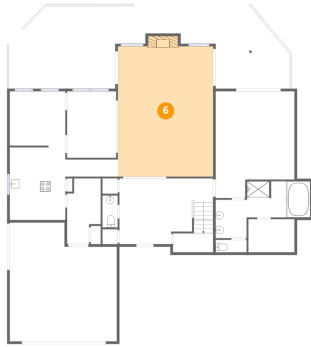
5 Floor 1 - Bath



Dimensions: 5'11" x 2'5"
Area: 14 sq. ft
Counted as living area: Yes

Heated: Yes
Finished: Yes
Enclosed: Yes
Contiguous: Yes
Permitted: Yes
Wet space: Yes
Addition: No
Conversion: No

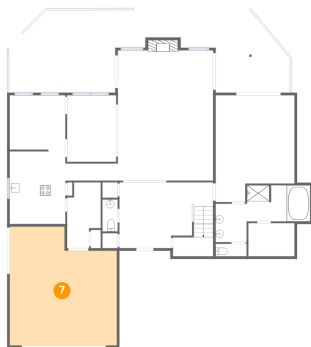
6 Floor 1 - Living Room



Dimensions: 18'3" x 25'0"
Area: 456 sq. ft
Counted as living area: Yes

Heated: Yes
Finished: Yes
Enclosed: Yes
Contiguous: Yes
Permitted: Yes
Wet space: No
Addition: No
Conversion: No

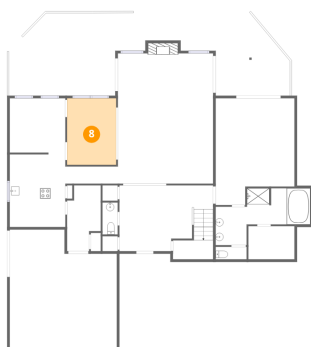
7 Floor 1 - Garage



Dimensions: 20'6" x 22'9"
Area: 467 sq. ft
Counted as living area: No

Heated: No
Finished: No
Enclosed: Yes
Contiguous: Yes
Permitted: Yes
Wet space: No
Addition: No
Conversion: No

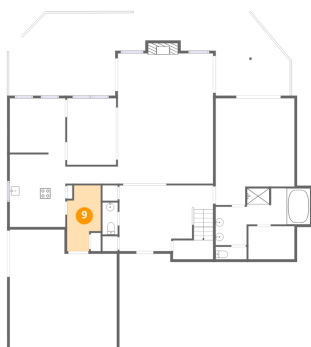
8 Floor 1 - Dining Room



Dimensions: 9'5" x 12'9"
Area: 120 sq. ft
Counted as living area: Yes

Heated: Yes
Finished: Yes
Enclosed: Yes
Contiguous: Yes
Permitted: Yes
Wet space: No
Addition: No
Conversion: No

9 Floor 1 - Laundry



Dimensions: 6'5" x 12'7"
Area: 81 sq. ft
Counted as living area: Yes

Heated: Yes
Finished: Yes
Enclosed: Yes
Contiguous: Yes
Permitted: Yes
Wet space: No
Addition: No
Conversion: No

10 Floor 1 - W.I.C.



Dimensions: 8'10" x 6'4"
Area: 56 sq. ft
Counted as living area: Yes

Heated: Yes
Finished: Yes
Enclosed: Yes
Contiguous: Yes
Permitted: Yes
Wet space: No
Addition: No
Conversion: No

11 Floor 1 - Office



Dimensions: 10'8" x 10'5"
Area: 110 sq. ft
Counted as living area: Yes

Heated: Yes
Finished: Yes
Enclosed: Yes
Contiguous: Yes
Permitted: Yes
Wet space: No
Addition: No
Conversion: No

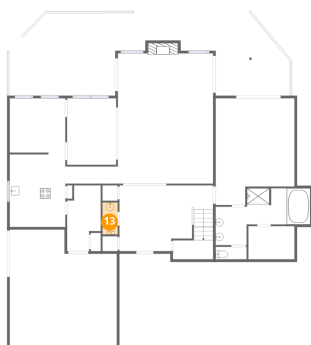
12 Floor 1 - Hall



Dimensions: 10'0" x 3'3"
Area: 33 sq. ft
Counted as living area: Yes

Heated: Yes
Finished: Yes
Enclosed: Yes
Contiguous: Yes
Permitted: Yes
Wet space: No
Addition: No
Conversion: No

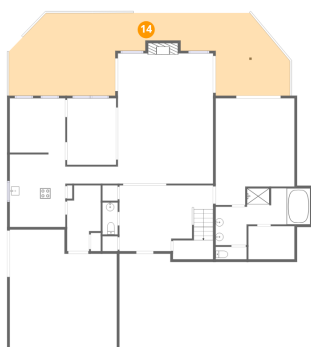
13 Floor 1 - Bath



Dimensions: 2'11" x 6'2"
Area: 18 sq. ft
Counted as living area: Yes

Heated: Yes
Finished: Yes
Enclosed: Yes
Contiguous: Yes
Permitted: Yes
Wet space: Yes
Addition: No
Conversion: No

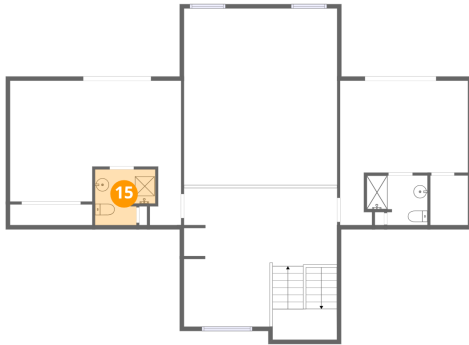
14 Floor 1 - Covered Deck



Dimensions: 48'6" x 15'9"
Area: 765 sq. ft
Counted as living area: No

Heated: No
Finished: No
Enclosed: No
Contiguous: Yes
Permitted: Yes
Wet space: No
Addition: No
Conversion: No

15 Floor 2 - Bath



Dimensions: 7'2" x 6'8"
Area: 48 sq. ft
Counted as living area: Yes

Heated: Yes
Finished: Yes
Enclosed: Yes
Contiguous: Yes
Permitted: Yes
Wet space: Yes
Addition: No
Conversion: No

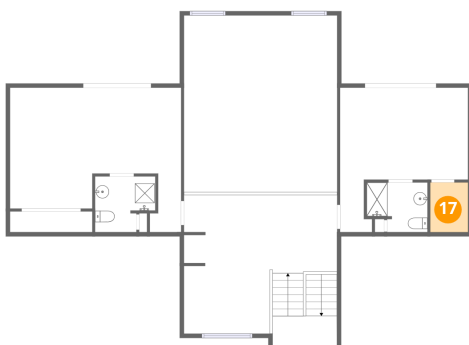
16 Floor 2 - Bath



Dimensions: 7'3" x 5'11"
Area: 43 sq. ft
Counted as living area: Yes

Heated: Yes
Finished: Yes
Enclosed: Yes
Contiguous: Yes
Permitted: Yes
Wet space: Yes
Addition: No
Conversion: No

17 Floor 2 - W.I.C.



Dimensions: 4'6" x 5'11"
Area: 27 sq. ft
Counted as living area: Yes

Heated: Yes
Finished: Yes
Enclosed: Yes
Contiguous: Yes
Permitted: Yes
Wet space: No
Addition: No
Conversion: No

18 Floor 2 - Bedroom



Dimensions: 15'3" x 17'2"
Area: 262 sq. ft
Counted as living area: Yes

Heated: Yes
Finished: Yes
Enclosed: Yes
Contiguous: Yes
Permitted: Yes
Wet space: No
Addition: No
Conversion: No

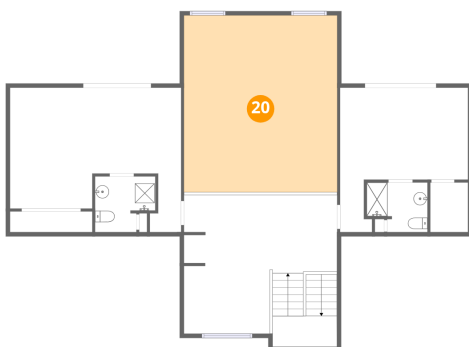
19 Floor 2 - Bedroom



Dimensions: 20'4" x 17'2"
Area: 350 sq. ft
Counted as living area: Yes

Heated: Yes
Finished: Yes
Enclosed: Yes
Contiguous: Yes
Permitted: Yes
Wet space: No
Addition: No
Conversion: No

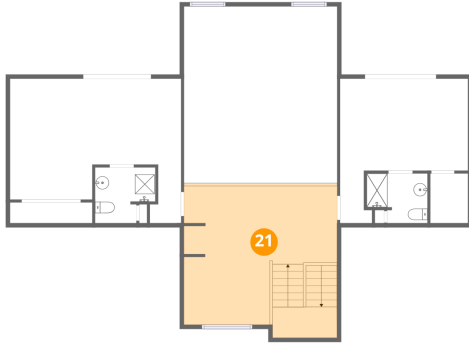
20 Floor 2 - Open To Below



Dimensions: 18'3" x 21'0"
Area: 384 sq. ft
Counted as living area: No

Heated: No
Finished: No
Enclosed: No
Contiguous: Yes
Permitted: No
Wet space: No
Addition: No
Conversion: No

21 Floor 2 - Sitting Room



Dimensions: 18'3" x 16'6"
Area: 301 sq. ft
Counted as living area: Yes

Heated: Yes
Finished: Yes
Enclosed: Yes
Contiguous: Yes
Permitted: Yes
Wet space: No
Addition: No
Conversion: No