

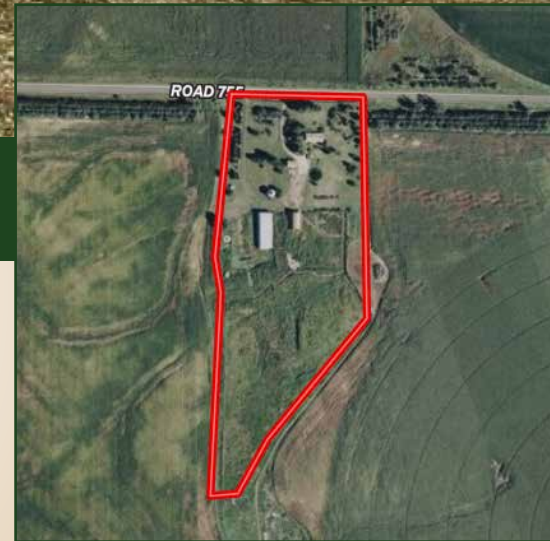
# Home & Acreage For Sale



## Road 755 Acreage

16.59± acres | Wallace, Nebraska

This 16.59± acre property in Perkins County offers a great blend of country living and functionality. The home features a partially finished basement and is complemented by numerous outbuildings, providing ample space for livestock, storage, or projects. With room to expand and enjoy the outdoors, this acreage offers versatility for a variety of rural lifestyles.



Faith Correll

### LISTING AGENT:

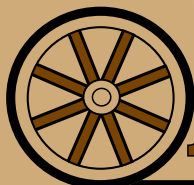
**FAITH CORRELL**

C: 308.386.8035 | E: FCorrell@AgriAffiliates.com

*Chase Dodson, Bruce Dodson, D.J. Lunkwitz, Mike Wilken,  
Mike Polk, Bonnie Downing*



See more info &  
browse full gallery



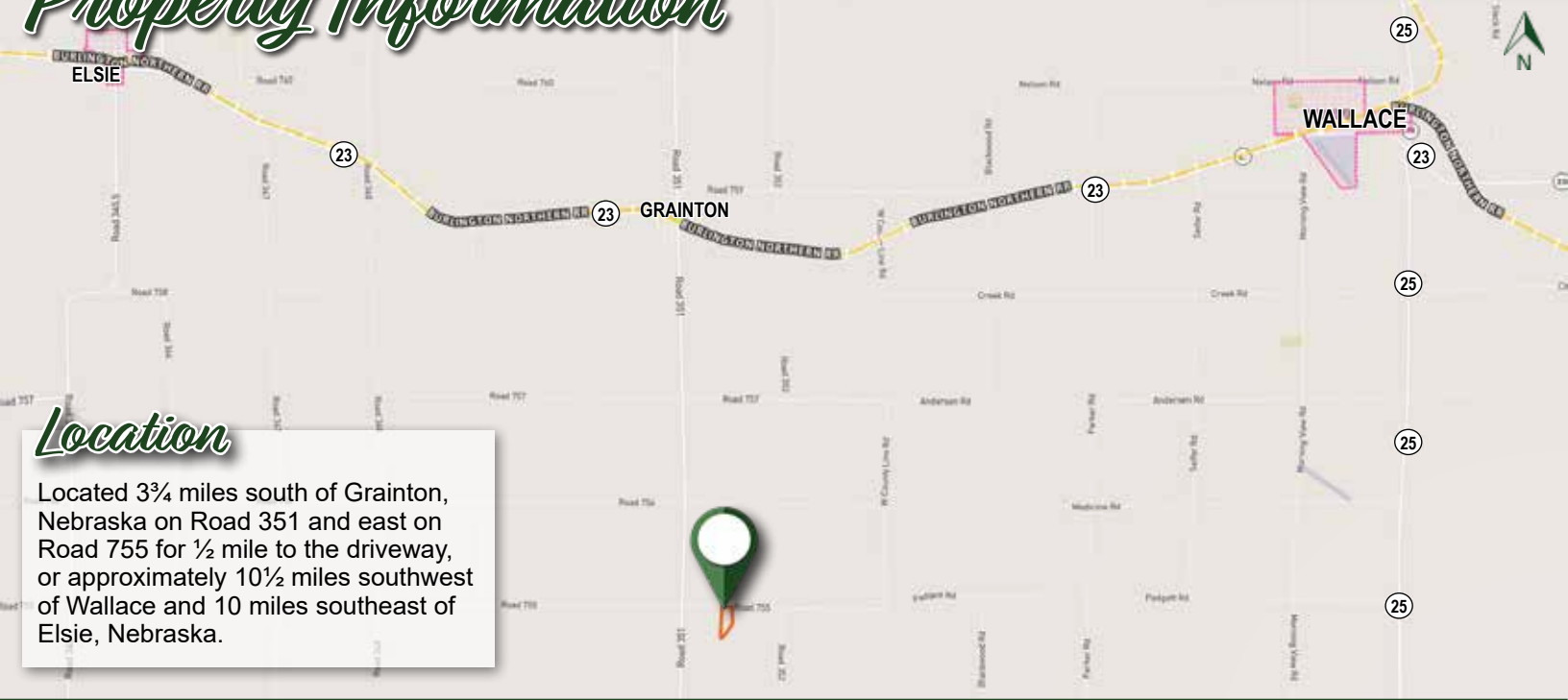
Offered exclusively by:

# AGRI AFFILIATES®

North Platte, NE • [AgriAffiliates.com](http://AgriAffiliates.com) • 308.534.9240

Information contained herein was obtained from sources deemed reliable. We have no reason to doubt the accuracy, but the information is not guaranteed. Prospective Buyers should verify all information. All maps provided by Agri Affiliates, Inc. are approximations only, to be used as a general guideline, and not intended as survey accurate. As with any agricultural land, this property may include noxious weeds. Agri Affiliates, Inc. and all agents are acting as Agent of the Seller.

# Property Information



**Location**  
 Located 3¼ miles south of Granton, Nebraska on Road 351 and east on Road 755 for ½ mile to the driveway, or approximately 10½ miles southwest of Wallace and 10 miles southeast of Elsie, Nebraska.

**LEGAL DESCRIPTION:** A tract of land located in the North ½ of Section 11, Township 9 North, Range 35 West of the 6th P.M. in Perkins County, Nebraska.  
**Property Address:**  
 35140 Road 755  
 Wallace, NE 69169

**ACRES & TAXES:** 16.59± surveyed acres (LS-554)  
 Approximate real estate taxes: \$2,053.51

**PRICE: \$365,000**



# Home Details



## Home Amenities

<b>YEAR BUILT:</b>	1954
<b>LIVING SPACE:</b>	1,849 sq. ft.
<b>BASEMENT:</b>	1,057 sq. ft. unfinished basement with partial finishes and cellar.
<b>BEDROOMS:</b>	3
<b>BATHROOM:</b>	2
<b>DETACHED GARAGE:</b>	864 sq. ft.

- New furnace in 2025
- Submersible domestic well - replaced in February 2026
- Wood-burning fireplace in basement

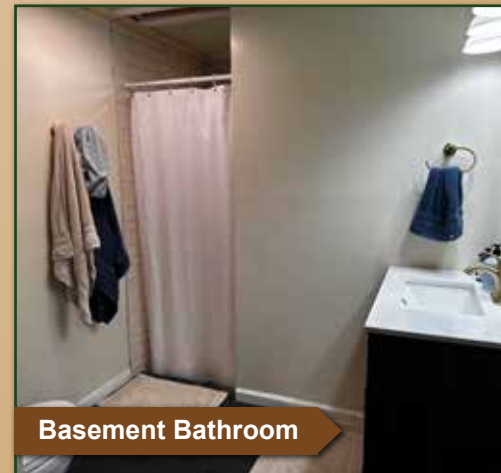


The partially finished basement includes a full bathroom, while the remaining unfinished space offers endless potential for bonus rooms, rec room, or additional living space.

**Showing by appointment only.**



Living Room



Basement Bathroom

*A versatile property with space,  
function, and rural charm.*

Farm Utility Building

Barn



Farm Utility Building



## *Outbuildings*

### **FARM UTILITY BUILDING**

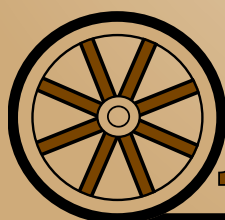
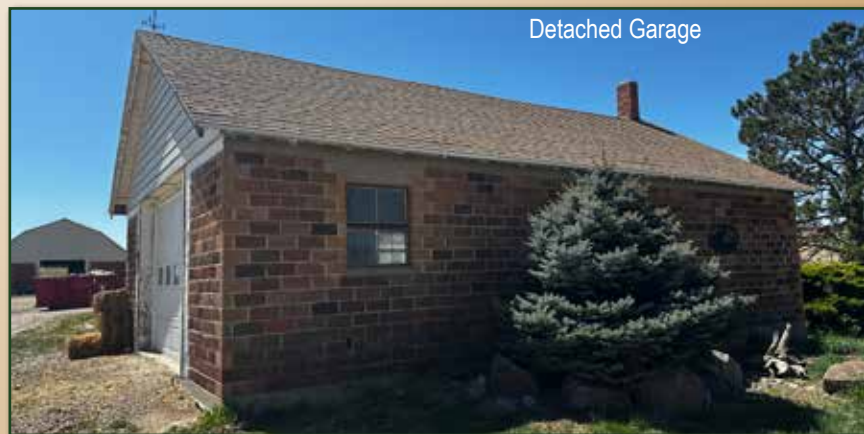
7,500 sq. ft. metal pole barn/shop building built in 1978 with sliding door access and concrete flooring.

### **BARN**

2,520 sq. ft. with overhead door, concrete flooring, and electricity.

Multiple other sheds & outbuildings on the property.

Detached Garage



# **AGRI AFFILIATES**<sup>®</sup>

*Helping Clients Achieve Their Real Estate Goals*

North Platte, NE • [AgriAffiliates.com](http://AgriAffiliates.com) • 308.534.9240 • [f](#) [@](#) [X](#) [in](#) [v](#)