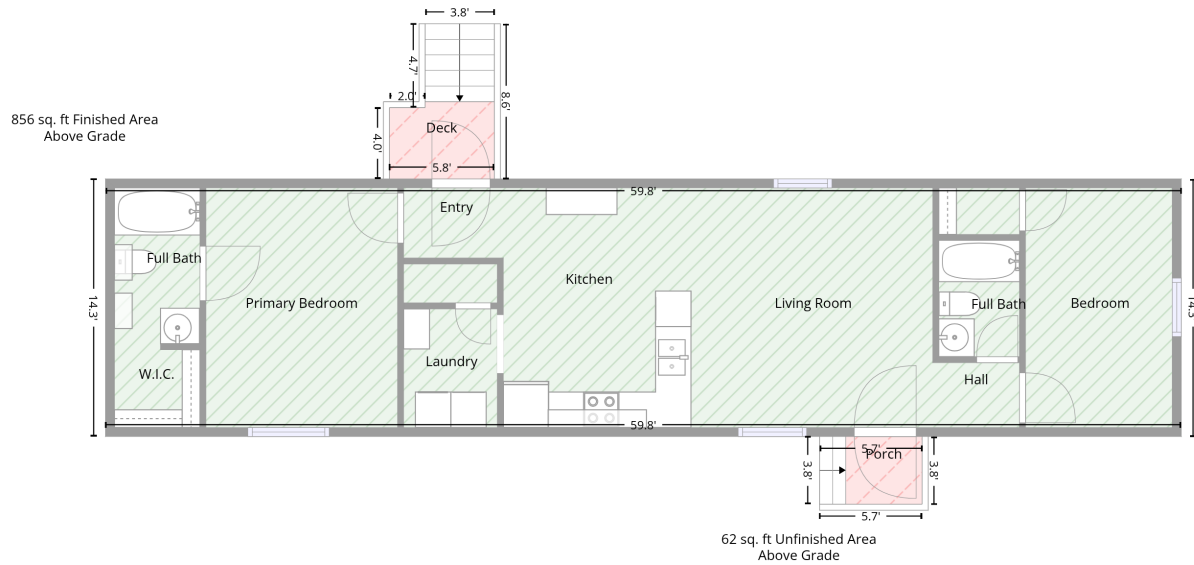


24 Outer Park Drive, Hendersonville, Henderson County, North Carolina, United States, 28792

Total area: 856 sq. ft
Gross living area: 856 sq. ft

Finished area: 856 sq. ft
Non-standard finished area: 0 sq. ft

Level 1



Total area: 856 sq. ft
Gross living area: 856 sq. ft

Finished area: 856 sq. ft
Non-standard finished area: 0 sq. ft

Space	Area (sq. ft)	Calculation <small>Coordinate Polygon Area Algorithm using inches</small>
Finished Area • Living area • Finished Area	856	$-((614.8 + 614.8) * (298.5 - 470.3) + (614.8 + -103) * (470.3 - 470.3) + (-103 + -103) * (470.3 - 298.5) + (-103 + 614.8) * (298.5 - 298.5)) * 0.5 * 0.00694$
PORCH • Non-living area • Unfinished Area	21	$-((441.9 + 441.9) * (470.3 - 515.5) + (441.9 + 373.4) * (515.5 - 515.5) + (373.4 + 373.4) * (515.5 - 470.3) + (373.4 + 441.9) * (470.3 - 470.3)) * 0.5 * 0.00694$
DECK • Non-living area • Unfinished Area	41	$-((156.4 + 156.4) * (195.1 - 298.5) + (156.4 + 86.4) * (298.5 - 298.5) + (86.4 + 86.4) * (298.5 - 251) + (86.4 + 110.2) * (251 - 251) + (110.2 + 110.2) * (251 - 195.1) + (110.2 + 156.4) * (195.1 - 195.1)) * 0.5 * 0.00694$

24 Outer Park Drive, Hendersonville, Henderson County, North Carolina, United States, 28792

Total area: 856 sq. ft
Gross living area: 856 sq. ft

Finished area: 856 sq. ft
Non-standard finished area: 0 sq. ft

Property UPD

Data	Value
Structure	1
Unit	1
Level Number	1
Below Grade	false
Level Low Ceiling	false
ADU Indicator	false
Total Area	856
Finished Area	856
Non-Standard Finished Area	0