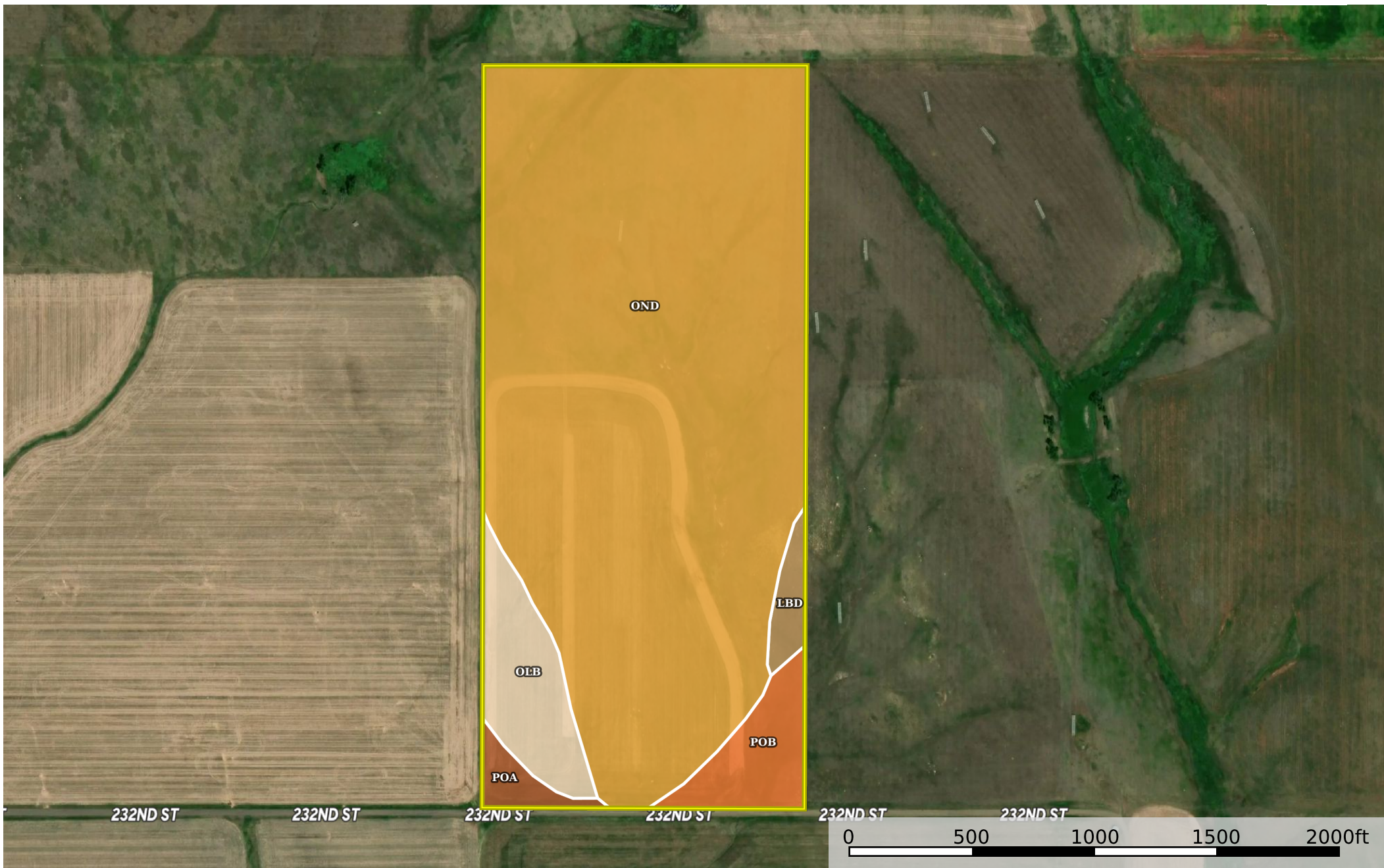



Lyman 80.2 - Byron Nielsen
Lyman County, South Dakota, 80.2 AC +/-



 Boundary

Boundary 79.12 ac

SOIL CODE	SOIL DESCRIPTION	ACRES	%	CPI	NCCPI	CAP
OnD	Opal-Sansarc clays, 6 to 15% slopes	67.24	84.97	41	24	6e
OIB	Opal clay, 3 to 6 percent slopes	5.38	6.8	60	26	3e
PoB	Promise clay, 3 to 6 percent slopes	3.84	4.85	64	22	3e
PoA	Promise clay, 0 to 3 percent slopes	1.35	1.71	69	22	3s
LbD	Lakoma-Okaton silty clays, 6 to 15 percent slopes	1.31	1.66	34	25	4e
TOTALS		79.12(*)	100%	43.76	24.02	5.57

(*) Total acres may differ in the second decimal compared to the sum of each acreage soil. This is due to a round error because we only show the acres of each soil with two decimal.

Capability Legend

Increased Limitations and Hazards

Decreased Adaptability and Freedom of Choice Users

Land, Capability

	1	2	3	4	5	6	7	8
'Wild Life'	•	•	•	•	•	•	•	•
Forestry	•	•	•	•	•	•	•	
Limited	•	•	•	•	•	•	•	
Moderate	•	•	•	•	•	•		
Intense	•	•	•	•	•			
Limited	•	•	•	•				
Moderate	•	•	•					
Intense	•	•						
Very Intense	•							

Grazing Cultivation

(c) climatic limitations (e) susceptibility to erosion

(s) soil limitations within the rooting zone (w) excess of water