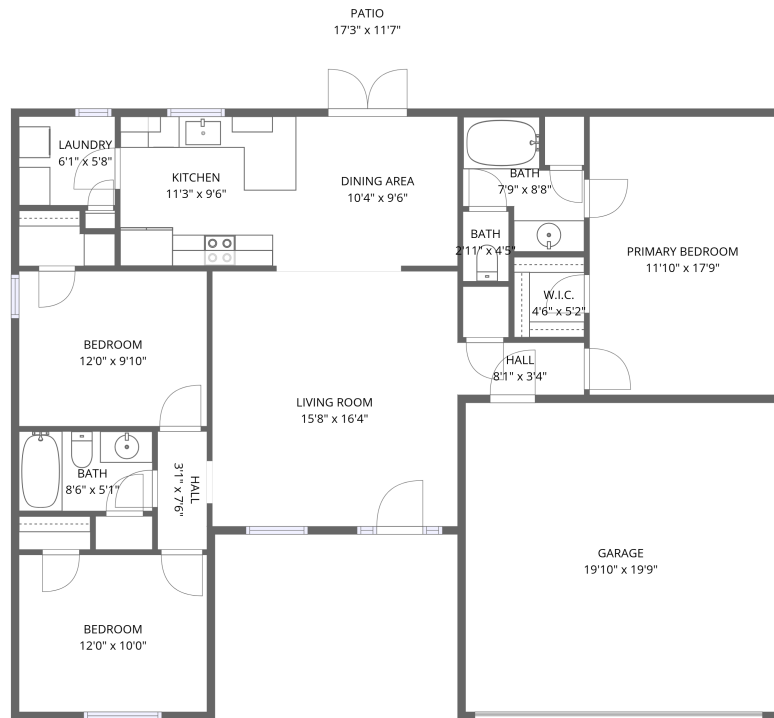


Home data report

21637 Shadowbrook Street, Robertsdale, Baldwin County, Alabama, United States, 36567



1st floor

Total Area: 1627 sq. ft

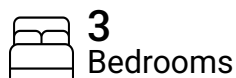
1st Floor: 1627 sq. ft

Excluded: Patio 201 sq. ft, Walls: 114 sq. ft

Property summary



1 Floors



3 Bedrooms



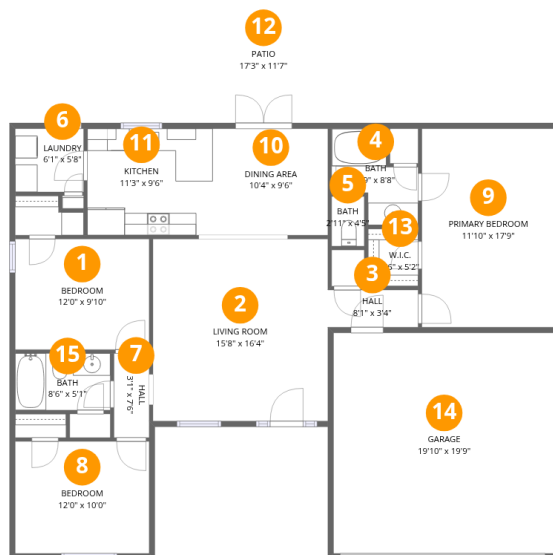
2 Bathrooms



1 Garages

Home data report

21637 Shadowbrook Street, Robertsedale, Baldwin County, Alabama, United States, 36567



Room dimensions

Floor 1

Total:1627sqft

Excluded: 201sqft

#		Dimensions	sqft	Counted as living area
1	Bedroom	12'0" x 9'10"	119 sq. ft	Yes
2	Living Room	15'8" x 16'4"	255 sq. ft	Yes
3	Hall	8'1" x 3'4"	27 sq. ft	Yes
4	Bath	7'9" x 8'8"	48 sq. ft	Yes
5	Bath	2'11" x 4'5"	13 sq. ft	Yes
6	Laundry	6'1" x 5'8"	35 sq. ft	Yes
7	Hall	3'1" x 7'6"	24 sq. ft	Yes
8	Bedroom	12'0" x 10'0"	120 sq. ft	Yes
9	Primary Bedroom	11'10" x 17'9"	212 sq. ft	Yes
10	Dining Area	10'4" x 9'6"	98 sq. ft	Yes
11	Kitchen	11'3" x 9'6"	107 sq. ft	Yes

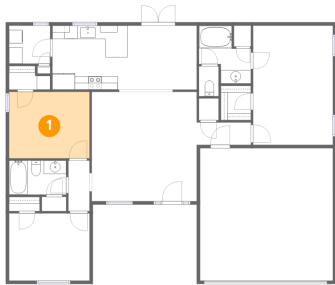
Home data report

**21637 Shadowbrook Street, Robertsdale, Baldwin County,
Alabama, United States, 36567**

#		Dimensions	sqft	Counted as living area
12	Patio	17'3" x 11'7"	201 sq. ft	No
13	W.I.C.	4'6" x 5'2"	23 sq. ft	Yes
14	Garage	19'10" x 19'9"	391 sq. ft	Yes
15	Bath	8'6" x 5'1"	43 sq. ft	Yes

21637 Shadowbrook Street, Robertsdale, Baldwin County,
Alabama, United States, 36567

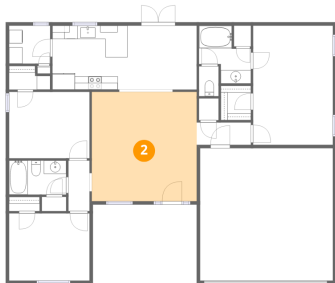
1 Floor 1 - Bedroom



Dimensions: 12'0" x 9'10"
Area: 119 sq. ft
Counted as living area: Yes

Heated: Yes
Finished: Yes
Enclosed: Yes
Contiguous: Yes
Permitted: Yes
Wet space: No
Addition: No
Conversion: No

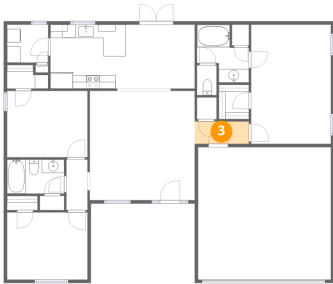
2 Floor 1 - Living Room



Dimensions: 15'8" x 16'4"
Area: 255 sq. ft
Counted as living area: Yes

Heated: Yes
Finished: Yes
Enclosed: Yes
Contiguous: Yes
Permitted: Yes
Wet space: No
Addition: No
Conversion: No

3 Floor 1 - Hall



Dimensions: 8'1" x 3'4"
Area: 27 sq. ft
Counted as living area: Yes

Heated: Yes
Finished: Yes
Enclosed: Yes
Contiguous: Yes
Permitted: Yes
Wet space: No
Addition: No
Conversion: No

4 Floor 1 - Bath



Dimensions: 7'9" x 8'8"
Area: 48 sq. ft
Counted as living area: Yes

Heated: Yes
Finished: Yes
Enclosed: Yes
Contiguous: Yes
Permitted: Yes
Wet space: Yes
Addition: No
Conversion: No

5 Floor 1 - Bath

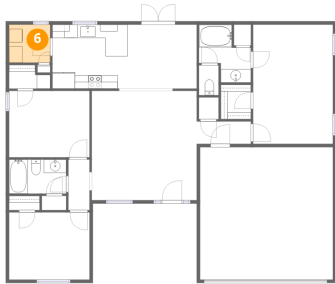


Dimensions: 2'11" x 4'5"
Area: 13 sq. ft
Counted as living area: Yes

Heated: Yes
Finished: Yes
Enclosed: Yes
Contiguous: Yes
Permitted: Yes
Wet space: No
Addition: No
Conversion: No

21637 Shadowbrook Street, Robertsdale, Baldwin County,
Alabama, United States, 36567

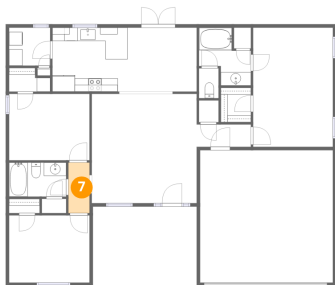
6 Floor 1 - Laundry



Dimensions: 6'1" x 5'8"
Area: 35 sq. ft
Counted as living area: Yes

Heated: Yes
Finished: Yes
Enclosed: Yes
Contiguous: Yes
Permitted: Yes
Wet space: No
Addition: No
Conversion: No

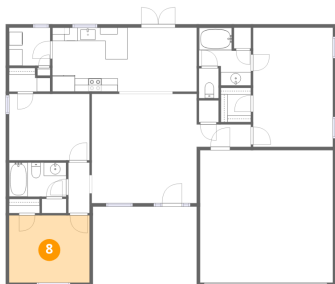
7 Floor 1 - Hall



Dimensions: 3'1" x 7'6"
Area: 24 sq. ft
Counted as living area: Yes

Heated: Yes
Finished: Yes
Enclosed: Yes
Contiguous: Yes
Permitted: Yes
Wet space: No
Addition: No
Conversion: No

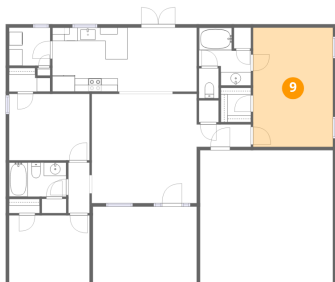
8 Floor 1 - Bedroom



Dimensions: 12'0" x 10'0"
Area: 120 sq. ft
Counted as living area: Yes

Heated: Yes
Finished: Yes
Enclosed: Yes
Contiguous: Yes
Permitted: Yes
Wet space: No
Addition: No
Conversion: No

9 Floor 1 - Primary Bedroom



Dimensions: 11'10" x 17'9"
Area: 212 sq. ft
Counted as living area: Yes

Heated: Yes
Finished: Yes
Enclosed: Yes
Contiguous: Yes
Permitted: Yes
Wet space: No
Addition: No
Conversion: No

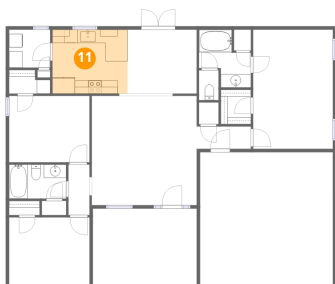
10 Floor 1 - Dining Area



Dimensions: 10'4" x 9'6"
Area: 98 sq. ft
Counted as living area: Yes

Heated: Yes
Finished: Yes
Enclosed: Yes
Contiguous: Yes
Permitted: Yes
Wet space: No
Addition: No
Conversion: No

11 Floor 1 - Kitchen

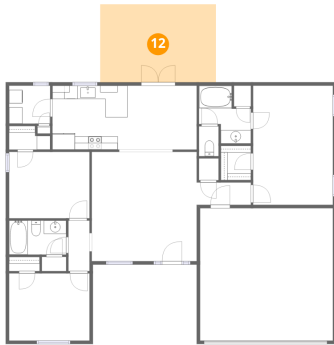


Dimensions: 11'3" x 9'6"
Area: 107 sq. ft
Counted as living area: Yes

Heated: Yes
Finished: Yes
Enclosed: Yes
Contiguous: Yes
Permitted: Yes
Wet space: No
Addition: No
Conversion: No

21637 Shadowbrook Street, Robertsdale, Baldwin County,
Alabama, United States, 36567

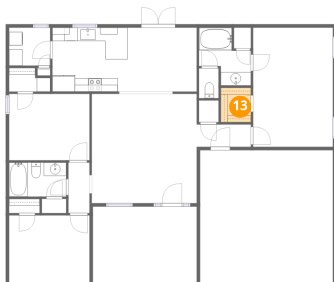
12 Floor 1 - Patio



Dimensions: 17'3" x 11'7"
Area: 201 sq. ft
Counted as living area: No

Heated: No
Finished: No
Enclosed: No
Contiguous: Yes
Permitted: Yes
Wet space: No
Addition: No
Conversion: No

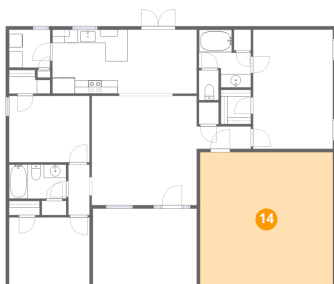
13 Floor 1 - W.I.C.



Dimensions: 4'6" x 5'2"
Area: 23 sq. ft
Counted as living area: Yes

Heated: Yes
Finished: Yes
Enclosed: Yes
Contiguous: Yes
Permitted: Yes
Wet space: No
Addition: No
Conversion: No

14 Floor 1 - Garage

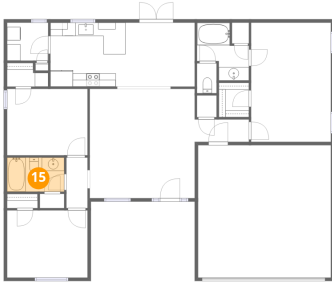


Dimensions: 19'10" x 19'9"
Area: 391 sq. ft
Counted as living area: No

Heated: No
Finished: Yes
Enclosed: Yes
Contiguous: Yes
Permitted: Yes
Wet space: No
Addition: No
Conversion: No

21637 Shadowbrook Street, Robertsdale, Baldwin County,
Alabama, United States, 36567

15 Floor 1 - Bath



Dimensions: 8'6" x 5'1"
Area: 43 sq. ft
Counted as living area: Yes

Heated: Yes
Finished: Yes
Enclosed: Yes
Contiguous: Yes
Permitted: Yes
Wet space: Yes
Addition: No
Conversion: No