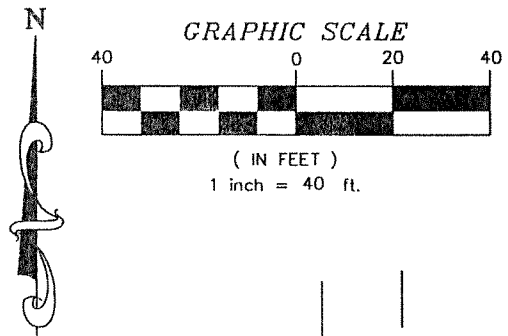


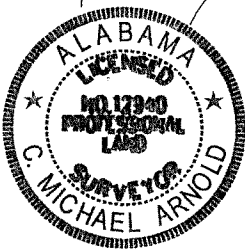
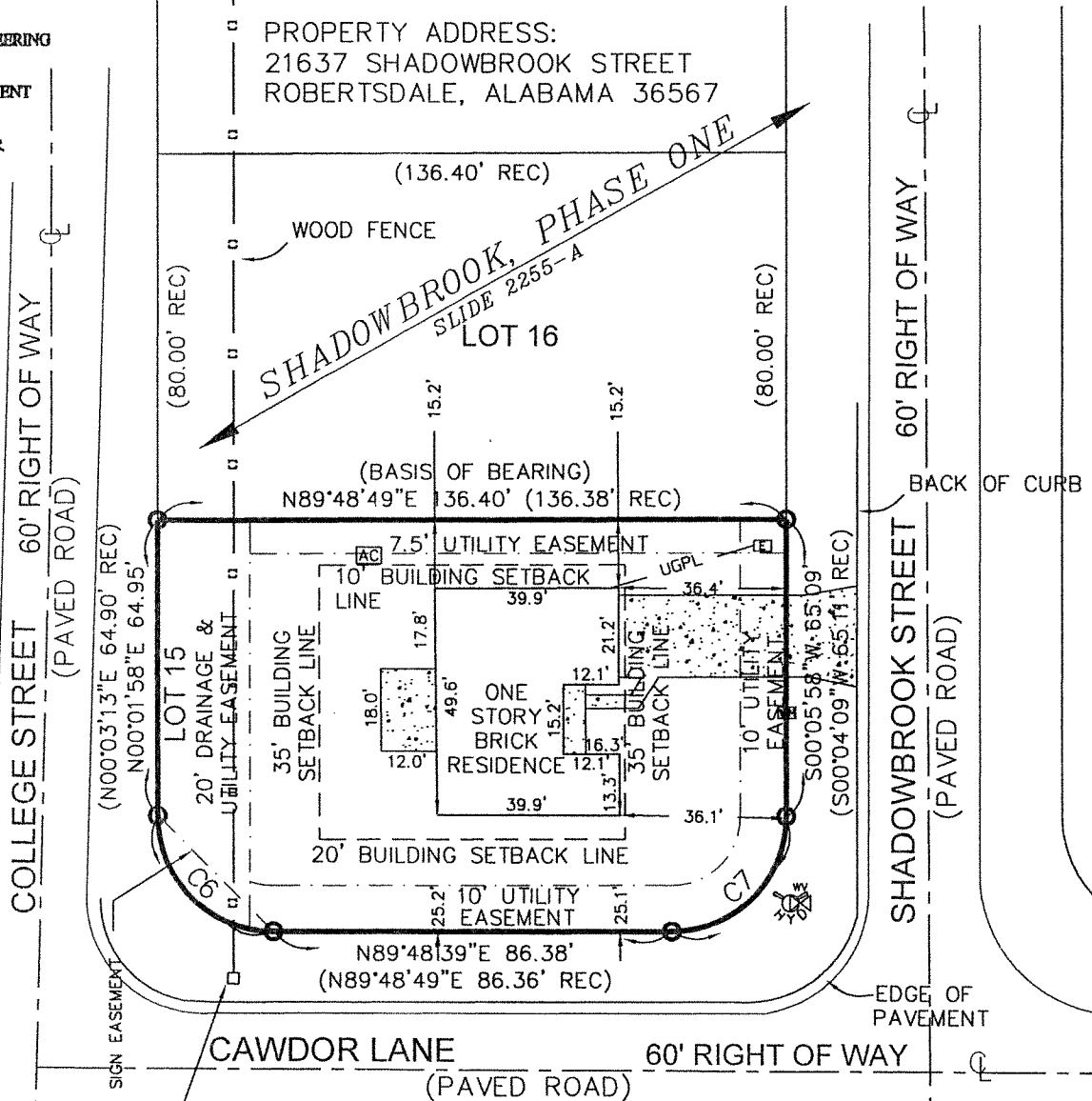
PROPERTY IS LOCATED IN THE NW 1/4 OF SECTION 8, TOWNSHIP 6 SOUTH, RANGE 4 EAST, BALDWIN COUNTY, ALABAMA.



CURVE TABLE					
CURVE	LENGTH	RADIUS	TANGENT	CHORD	BEARING
REC C6	39.37	25.00	25.10	35.43	S45°03'59"E
C6	39.30	24.88	25.10	35.34	S45°08'35"E
REC C7	39.16	25.00	24.89	35.28	N44°56'29"E
C7	39.15	24.89	24.94	35.24	N44°56'53"E

ENGINEERING  
DEVELOPMENT  
SERVICES, L.L.C.

PROPERTY ADDRESS:  
21637 SHADOWBROOK STREET  
ROBERTSDALE, ALABAMA 36567



**LEGEND:**

- = 5/8" CAPPED IRON PIN FOUND (EDS)
- = FIRE HYDRANT
- = WATER VALVE
- = CENTERLINE
- REC = RECORD
- EDS = ENGINEERING DEVELOPMENT SERVICES
- UGPL = UNDERGROUND POWER
- = AIR CONDITIONER

**DESCRIPTION:**

LOT 15, SHADOWBROOK SUBDIVISION, PHASE ONE, AS SHOWN BY MAP OR PLAT THEREOF RECORDED AT SLIDE 2255-A, PROBATE RECORDS, BALDWIN COUNTY, ALABAMA. (DESCRIPTION COMPOSED FROM PROBATE RECORDS AND AN ACTUAL FIELD SURVEY.)

**SURVEYOR'S CERTIFICATE:**

I HEREBY STATE THAT ALL PARTS OF THIS SURVEY AND DRAWING HAVE BEEN COMPLETED IN ACCORDANCE WITH THE CURRENT REQUIREMENTS OF THE STANDARDS OF PRACTICE FOR SURVEYING IN THE STATE OF ALABAMA TO THE BEST OF MY KNOWLEDGE, INFORMATION AND BELIEF, EFFECTIVE MAY 7, 2002.

ENGINEERING DEVELOPMENT SERVICES, L.L.C.  
C. Michael Arnold AL. P.L.S. No. 12940  
SURVEY NOT VALID WITHOUT ORIGINAL SIGNATURE AND EMBOSSED SEAL.

*By JH*

REVISIONS	ISSUE DATE	FIELD DATE	FIELD BOOK & PAGE	BOUNDARY SURVEY WITH IMPROVEMENTS SHOWN FOR	DATE:
STAKE OUT	12/22/06	12/21/06	BK 217, PG 47		<b>BENCHMARK HOMES, INC.</b>
FINAL SURVEY	04/23/07	04/19/07	BK 197, PG 10	<b>ENGINEERING DEVELOPMENT SERVICES, L.L.C.</b>	SCALE: 1" = 40'
				Engineering • Planning • Surveying • Construction Management	DRAWN BY: LNJ
				27164 Pollard Road • Daphne, Alabama 36628	CHECKED BY: CMA
				P.O. Box 1395 • Daphne, Alabama 36628	SECTION 8, T-6-S, R-4-E BALDWIN COUNTY, ALABAMA
				(261) 828-2122 • Fax (261) 828-6269	PROJECT# 040725
				engds@bellsouth.net	REF.# 120624.DWG
					DWG.# 040725.DWG
					SHEET NO. 1 OF 1