

Pacolet Hwy

±16.49 Acre Development Site in Gaffney, SC

SITE

**FUTURE MILL CREEK
RESIDENTIAL DEVELOPMENT**

**LIMESTONE-CENTRAL
ELEMENTARY SCHOOL**


REEDY
LAND CO.



Parcel Overview

00A Pacolet Hwy, Gaffney, SC 29340
Cherokee County Tax ID: 083-00-00-001.003



Executive Summary

00A Pacolet Hwy | Gaffney, SC 29340

Property Highlights

- ±16.49 Acre Development Site
- Zoning: RG (General Residential)
- Across the street from the new Mill Creek Development
 - 90 Patio Homes
 - 100 2-story townhomes
- Adjacent to Limestone-Central Elementary School
- All utilities available
- Within city limits of Gaffney
- ±875' of road frontage on Highway 150
- ±6 minutes to Downtown Gaffney
- ±13 minutes to I-85
- ±33 minutes to Downtown Spartanburg

Offering Summary

Lot Size: ±16.49 Acres

Sale Price: \$265,000

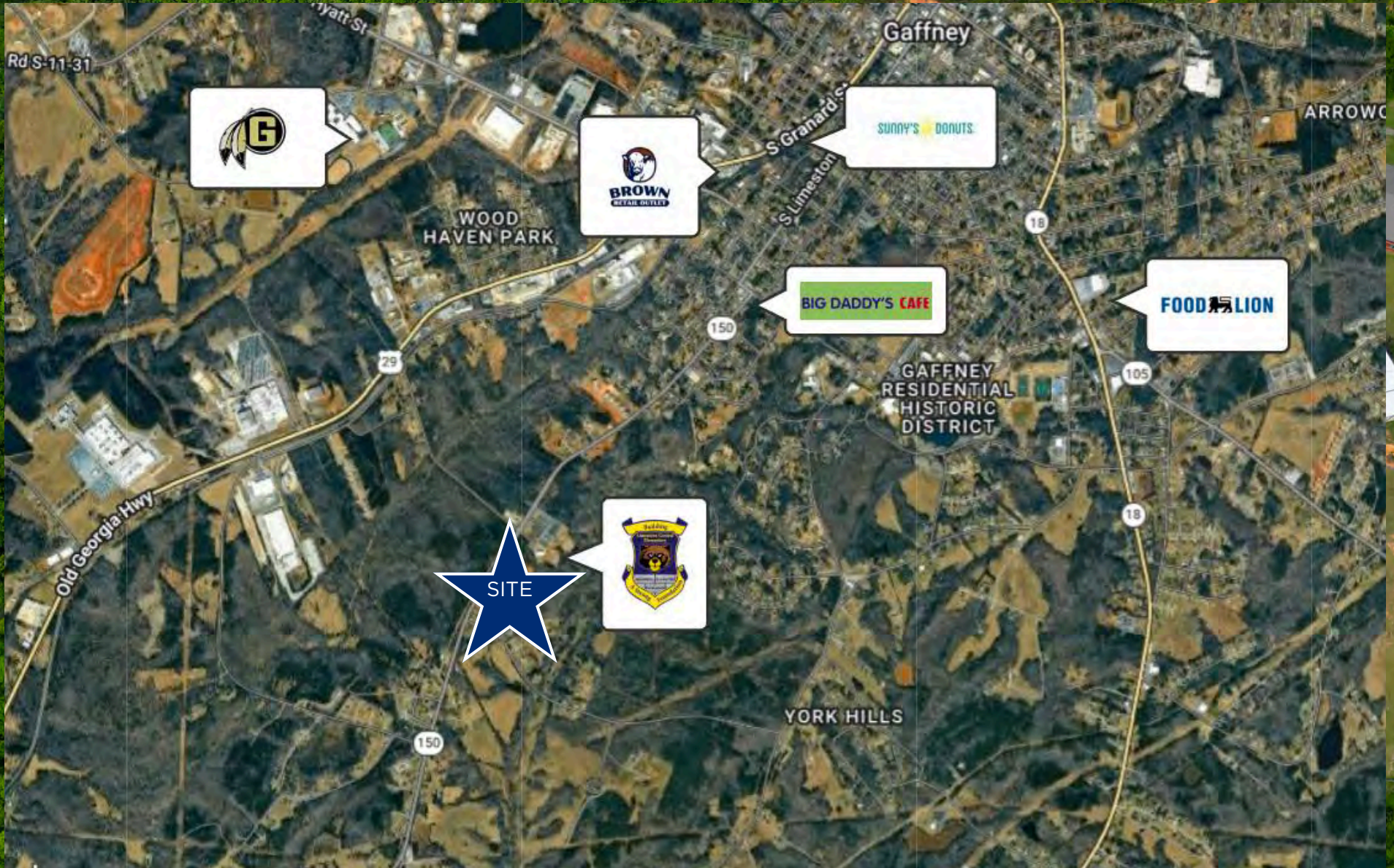
Acreage, taxes, utilities, and lot dimensions to be verified by Buyer and/or Buyer's agent



Retail Map

Gaffney, SC

REEDY



Contact Info

Reedy Land Co.

REEDY



Knox Duncan

Senior Associate

864-608-0029

kduncan@reedypg.com



Gabe Grammer

Senior Associate

803-205-3260

ggrammer@reedypg.com



Jonathan Monts

Associate

864-389-0299

jmonts@reedypg.com



Denton Warlick

Associate

864-238-7740

dwarlick@reedypg.com