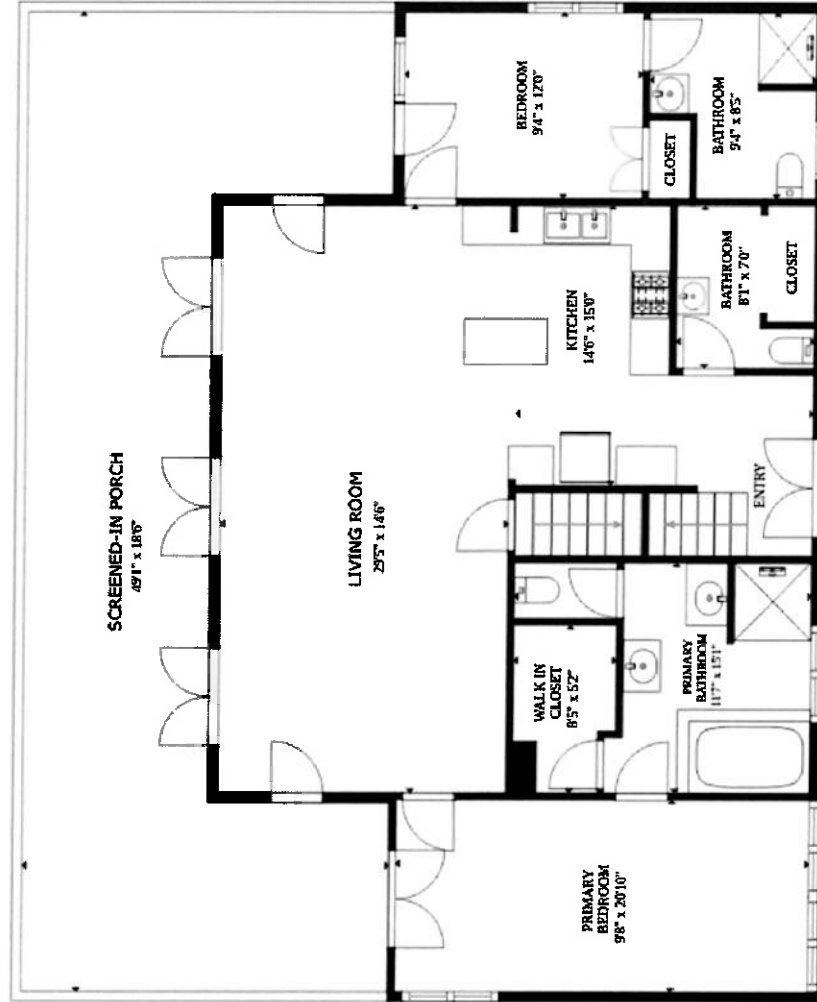
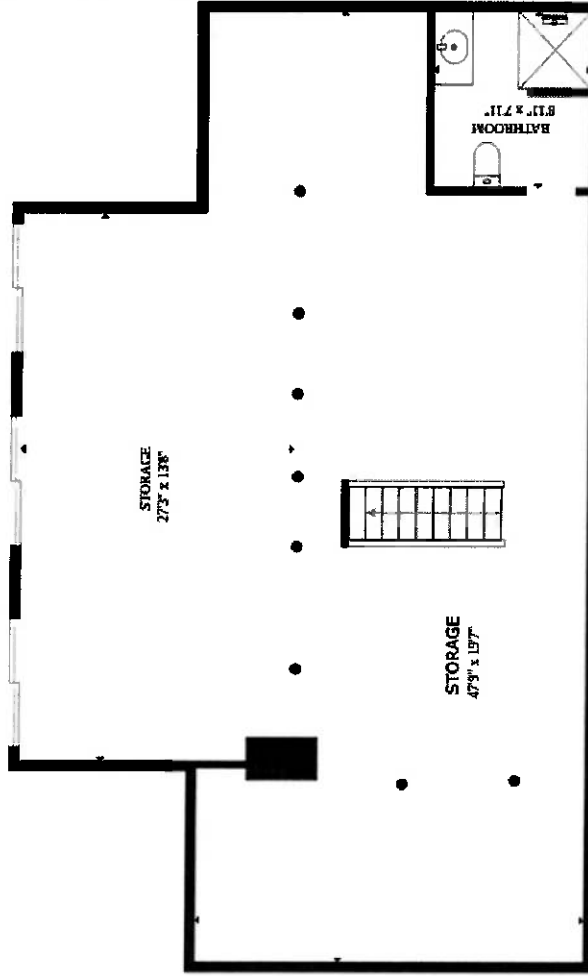
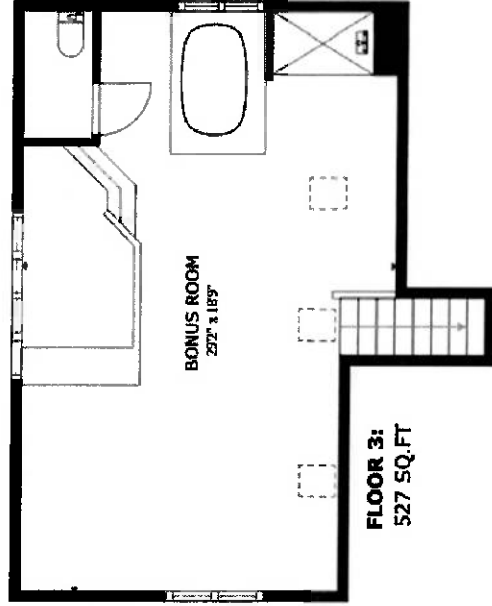


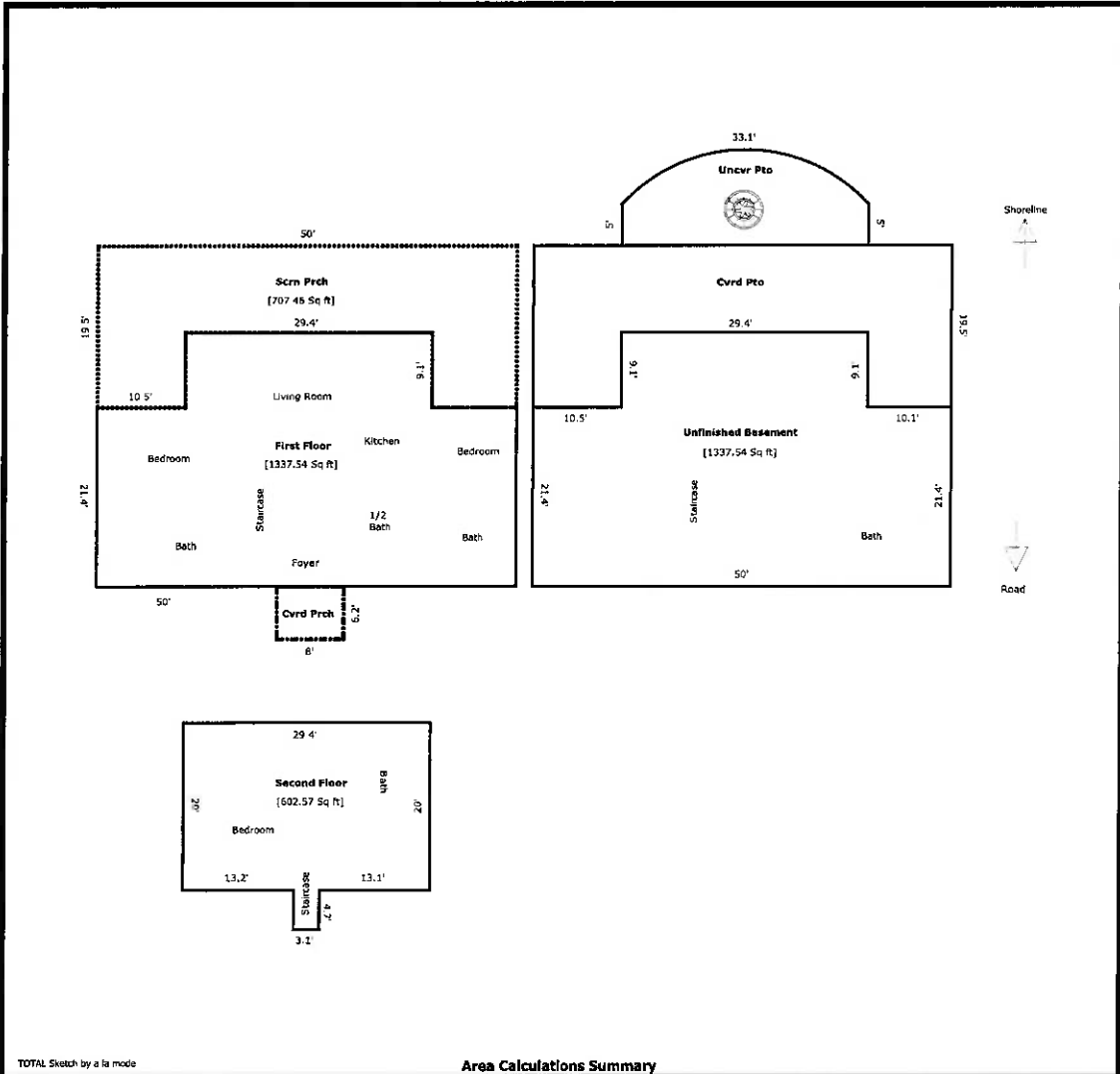
# --- 263 MEADOWLARK LN ---

TOTAL APPROXIMATE FLOOR AREA: 1,815 SQ.FT



## Building Sketch

<b>Borrower</b>			
<b>Property Address</b>	263 Meadowlark Ln		
<b>City</b>	Buffalo Junction	<b>County</b>	Mecklenburg
<b>State</b>	VA	<b>Zip Code</b>	24529
<b>Lender/Client</b>	N/A		



TOTAL Sketch by a la mode

### Area Calculations Summary

Living Area	Area	Calculation Details
<b>Living Area</b>		
First Floor	1337.5 Sq ft	50 × 21.4 = 1070 29.4 × 9.1 = 267.5
Second Floor	602.6 Sq ft	29.4 × 20 = 588 3.1 × 4.7 = 14.6
<b>Total Living Area (Rounded):</b>	<b>1940 Sq ft</b>	
<b>Non-living Area</b>		
Cvrd Prch	49.6 Sq ft	8 × 6.2 = 49.6
Uncvr Pto	279.3 Sq ft	29.4 × 5 = 147 Arc = 132.3
Unfinished Basement	1337.5 Sq ft	50 × 21.4 = 1070 29.4 × 9.1 = 267.5
Cvrd Pto	707.5 Sq ft	50 × 10.4 = 520 10.1 × 9.1 = 91.9 10.5 × 9.1 = 95.6
Scrn Prch	707.5 Sq ft	50 × 10.4 = 520 10.1 × 9.1 = 91.9 10.5 × 9.1 = 95.6