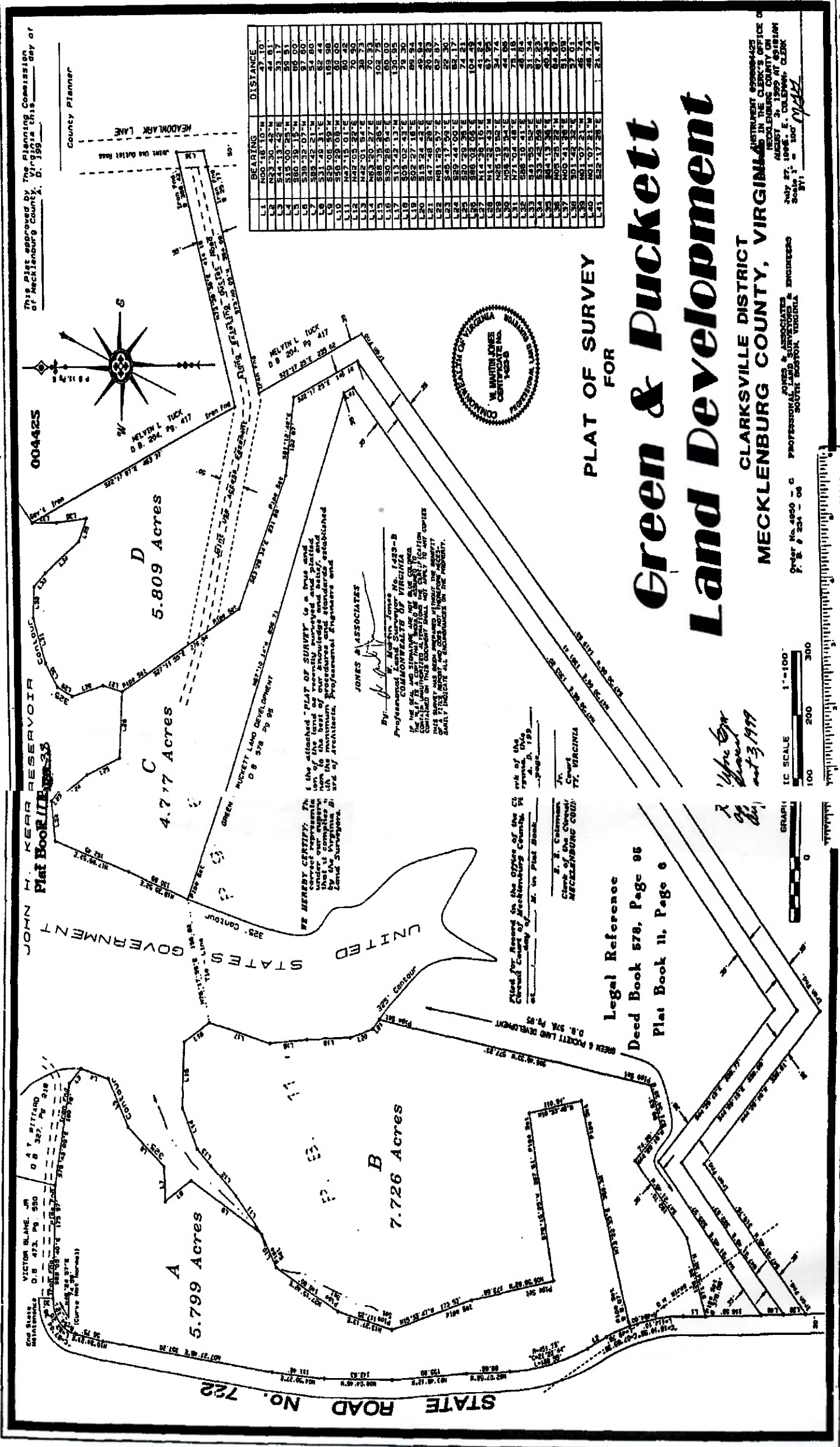


Page 1 004425

Page 2



This Plat approved by The Planning Commission of Mecklenburg County, N. C. on the 11th day of August, 1998.

0004425

JOHN M. KEAR RESERVOIR
Plat Book 11, Page 35

STATE ROAD No. 722

VICTOR BLANK, JR.
D. B. 473, Pg. 580

DAVID BITTING
D. B. 387, Pg. 318

County Planner

HEADMARK LANE

W

HELVIN L. TUCK
D. B. 204, Pg. 417

W

HELVIN L. TUCK
D. B. 204, Pg. 417

W

HELVIN L. TUCK
D. B. 204, Pg. 417

W

HELVIN L. TUCK
D. B. 204, Pg. 417

W

HELVIN L. TUCK
D. B. 204, Pg. 417

W

HELVIN L. TUCK
D. B. 204, Pg. 417

W

HELVIN L. TUCK
D. B. 204, Pg. 417

W

HELVIN L. TUCK
D. B. 204, Pg. 417

W

HELVIN L. TUCK
D. B. 204, Pg. 417

W

HELVIN L. TUCK
D. B. 204, Pg. 417

W

HELVIN L. TUCK
D. B. 204, Pg. 417

W

LINE	BEARING	DISTANCE
L1	N00°16'10"W	27.10
L2	N23°30'42"W	31.01
L3	S74°00'34"W	52.41
L4	S80°39'15"W	68.00
L5	S38°32'07"W	97.80
L6	S31°49'31"E	62.44
L7	S39°05'59"W	169.98
L8	S59°29'08"W	60.00
L9	N27°13'31"E	70.48
L10	N42°01'54"E	38.73
L11	N63°20'27"E	70.33
L12	S88°35'26"E	102.75
L13	S30°28'54"E	60.00
L14	S13°42'13"W	130.95
L15	S03°02'43"E	79.30
L16	S05°27'18"E	88.34
L17	S13°24'28"E	20.83
L18	N41°29'57"E	62.87
L19	S48°17'59"E	22.30
L20	S28°44'00"E	62.17
L21	S20°29'39"E	74.21
L22	S86°03'05"E	104.49
L23	N14°38'15"E	41.24
L24	N14°23'43"W	67.92
L25	N25°19'58"E	44.84
L26	N74°31'48"E	75.18
L27	S28°10'41"E	48.84
L28	S43°05'52"E	31.34
L29	S44°13'46"E	67.23
L30	N05°28'22"W	60.34
L31	N00°41'38"E	64.87
L32	S01°42'32"E	31.08
L33	S01°02'32"E	22.74
L34	N61°02'31"W	48.74
L35	S22°11'28"E	21.47

WE HEREBY CERTIFY: That the attached "PLAT OF SURVEY" is a true and correct representation of the land as surveyed and plotted hereon to the best of our knowledge and belief, and that we are duly Licensed Professional Engineers and Land Surveyors.

By: *[Signature]*
JONES & ASSOCIATES
Professional Land Surveyors, Inc. License No. 14255-B
COMMONWEALTH OF VIRGINIA
100 W. MAIN STREET, SUITE 200, RICHMOND, VA 23219
FOR A COMPLETE LIST OF SURVEYS, CONTACT US AT (804) 781-1111
THIS SURVEY WAS PREPARED IN ACCORDANCE WITH THE SURVEYING ACT OF 1954 AND ALL REQUIREMENTS THEREOF.
EARLY INDICATE ALL ENCUMBRANCES FOR THE PROPERTY.



Filed for Record in the Office of the Clerk of the Circuit Court of Mecklenburg County, N. C. on the 11th day of August, 1998.

[Signature]
E. E. Coleman
Clerk of the Circuit Court
MECKLENBURG COUNTY, VIRGINIA

PLAT OF SURVEY FOR

Green & Puckett Land Development

Legal Reference
Deed Book 578, Page 95
Plat Book 11, Page 6

[Signature]
W. Martin Jones
August 3, 1998

CLARKSVILLE DISTRICT
MECKLENBURG COUNTY, VIRGINIA

JONES & ASSOCIATES
PROFESSIONAL LAND SURVEYORS, INC.
SUITE 200, W. MAIN STREET, RICHMOND, VIRGINIA

Order No. 4450 - C P. E. # 254 - 06

INSTRUMENT REGISTRATION OFFICE
MECKLENBURG COUNTY, VA
AUGUST 3, 1998 AT 6:18 AM
JUDY ST. 1998 E. E. COLEMAN, CLERK
Scale 1" = 100'
311

