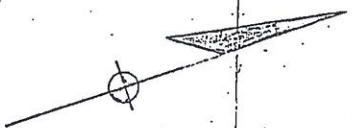
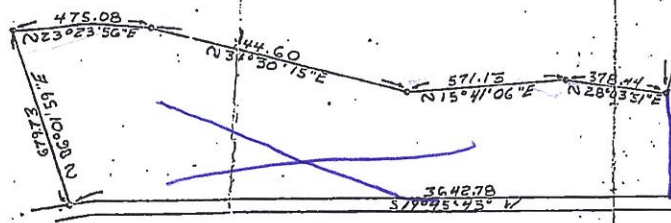


MAP OF A PORTION OF LAND OWNED BY  
BURRUSS LAND & LUMBER COMPANY, INCORPORATED  
D.B. 51 P 143 FOR ROBERT H. MOYER

□ POST  
○ IRON PIN  
SCALE 1"=300'      MAYS, 1977  
Robert H. Moyer C.L.S. S-005673



105.182 AC.



ROUTE 220

WILLARD J. WALKER, et al  
D.B. 32 P 154  
JAMES E. + CORRYN M. BAYDORF  
D.B. 45 P 414  
DON + VIRGINIA SULENBERGER  
D.B. 50 P 263  
SARA S. BOBBITT  
D.B. 57 P 60  
FAY V. EARLY  
D.B. 57 P 50

Bluebird Ln.

To be divided off