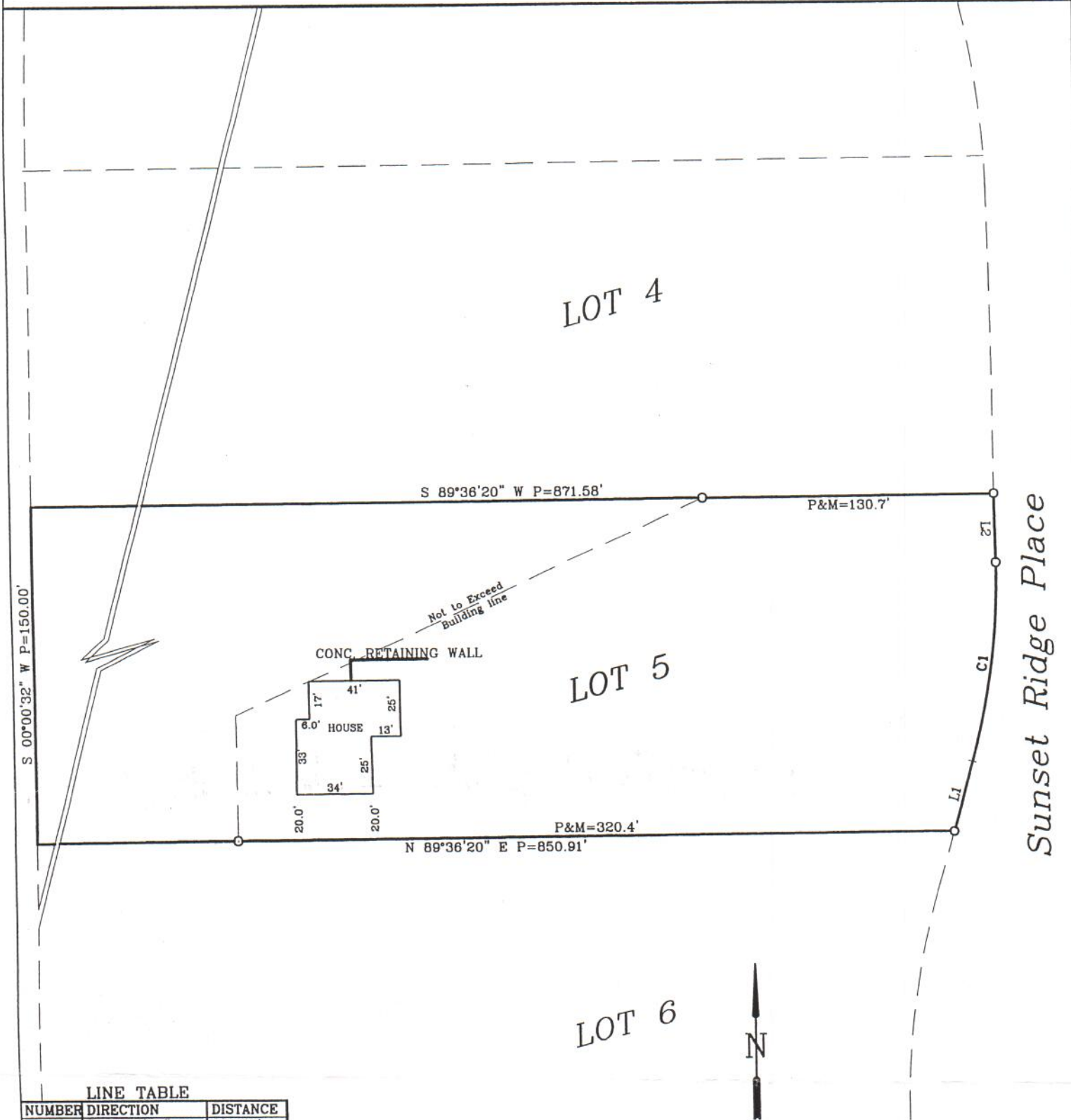


# SURVEY

Lot 5 of Sunset Ridge Addition,  
to the City of Pierre, Hughes County, South Dakota.



S 00°00'32" W P=150.00'

S 89°36'20" W P=871.58'

P&M=130.7'

Not to Exceed  
Building line

CONC. RETAINING WALL



LOT 5

P&M=320.4'

N 89°36'20" E P=850.91'

Sunset Ridge Place

LOT 6



**LINE TABLE**

NUMBER	DIRECTION	DISTANCE
L1	N 16°28'22" E	31.67'
L2	N 00°44'11" W	30.90'

**CURVE TABLE**

NUMBER	DELTA ANGLE	CHORD DIRECTION	TANGENT	RADIUS	ARC LENGTH	CHORD LENGTH
C1	17°01'00"	N 07°48'19" E	45.43	303.70	90.20	89.87

ACKNOWLEDGMENT  
STATE OF SOUTH DAKOTA

