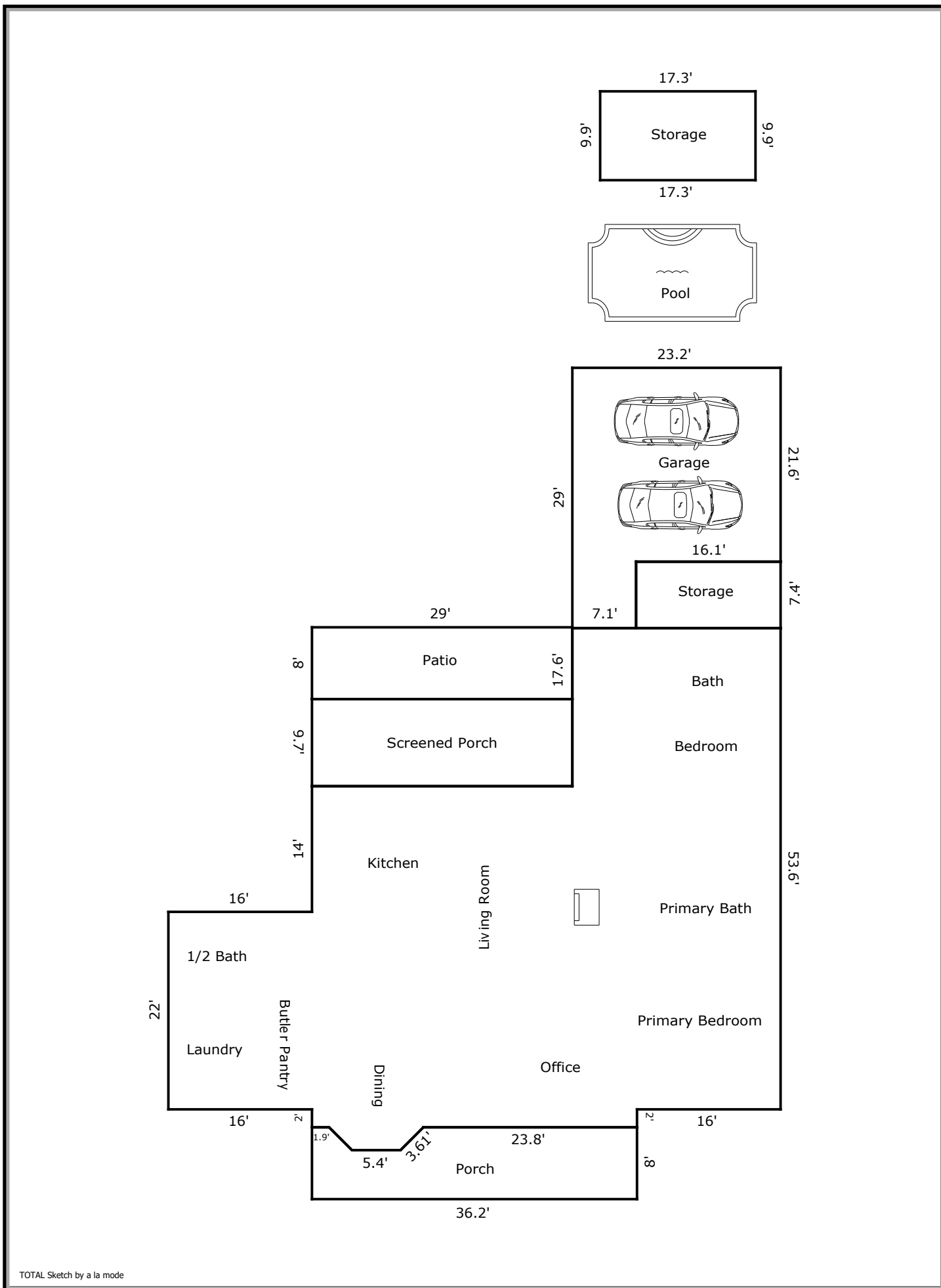


Building Sketch (Page - 1)

Borrower	Borrower				
Property Address	907 Carter Ave				
City	Ba500 Rouge	County	East Baton Rouge	State	LA Zip Code 70806
Lender/Client	N/A				



TOTAL Sketch by a la mode



Building Sketch (Page - 2)

Borrower	Borrower				
Property Address	907 Carter Ave				
City	Ba500 Rouge	County	East Baton Rouge	State	LA Zip Code 70806
Lender/Client	N/A				

TOTAL Sketch by a la mode

Area Calculations Summary

Living Area		Calculation Details	
First Floor	2732.19 Sq ft	0.5 × 2.55 × 2.55 =	3.25
		0.5 × 2.55 × 2.55 =	3.25
		5.4 × 2.55 =	13.77
		22 × 16 =	352
		38 × 29 =	1102
		23.2 × 53.6 =	1243.52
		7.2 × 2 =	14.4
Total Living Area (Rounded):	2732 Sq ft		
Non-living Area			
Storage	119.14 Sq ft	16.1 × 7.4 =	119.14
Storage	171.27 Sq ft	9.9 × 17.3 =	171.27
2 Car Attached	553.66 Sq ft	7.1 × 7.4 =	52.54
		23.2 × 21.6 =	501.12
Screened Porch	281.3 Sq ft	9.7 × 29 =	281.3
Concrete Patio	232 Sq ft	29 × 8 =	232
Open Porch	269.33 Sq ft	36.2 × 5.45 =	197.29
		2.55 × 23.8 =	60.69
		0.5 × 2.55 × 2.55 =	3.25
		2.55 × 1.9 =	4.84
		0.5 × 2.55 × 2.55 =	3.25