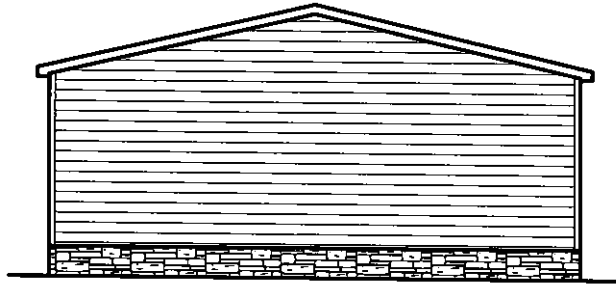
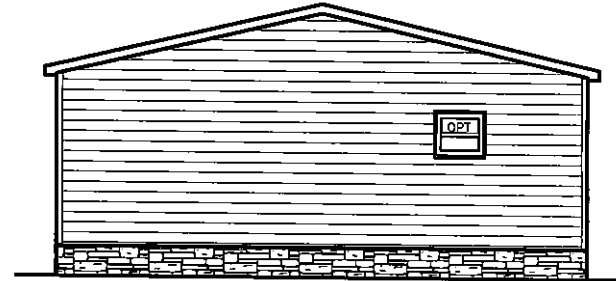


REAR ELEVATION



LEFT ELEVATION



RIGHT ELEVATION



FRONT ELEVATION

1470 SQ.FT. (STD PLAN "CONDITIONED")  
 SQ.FT. (W/OPT. PORCH/RECESS "CONDITIONED")

CMH CONSTRUCTION MANAGEMENT	PLAN #	38M142
	DATE	11/11/11
SHEET #		28 x 56 Salmon
ELEVATION		

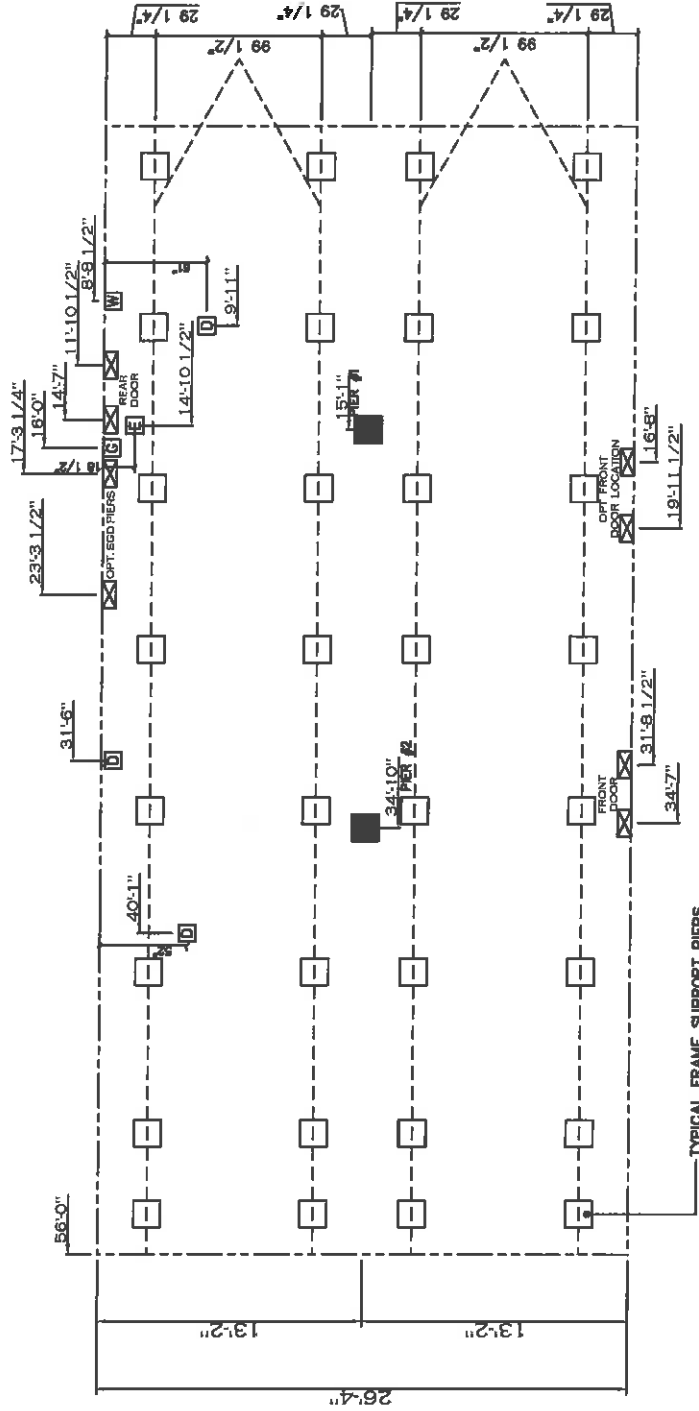
20 lb ROOF LOAD SIDEWALL OPENING PIER LOAD 28' BOX WIDTH	SIDEWALL OPENING (FT) REQUIRED PIER LOAD (LBS)					
	3	4	5	6	8	10
	1175	1330	1485	1640	1950	2260

\*FOR 30 lb & 40 lb ROOF LOAD REFER TO TABLES 7b & 7c IN THE INSTALLATION MANUAL.

20 psf Roof Live Load		
Column Pier #	Distance from Hitch (lbs)	Pier Load (lbs)
1	15,083	4301
2	34,833	4301

30 psf Roof Live Load		
Column Pier #	Distance from Hitch (lbs)	Pier Load (lbs)
1	15,083	6654
2	34,833	6654

40 psf Roof Live Load		
Column Pier #	Distance from Hitch (lbs)	Pier Load (lbs)
1	15,083	8218
2	34,833	8218



TYPICAL FRAME SUPPORT PIERS

PIER LEGEND	
□	SUPPORT UNDER WALKING OPENING
■	SUPPORT AT WALKING COLUMN
▨	SUPPORT UNDER WALKING WALL
▩	PIER POUCH/RECESSED ENTRY
□	PIER WITH BEAM
■	PIER FORMER
●	72-INCH SUPPORT (QTY PER TRAILER)
■	SEE DETAIL D-9 IN FOUND. PLAN

- GENERAL NOTES:
- PIER LOADS SHOWN ARE TO BE USED TO SIZE THE FOOTINGS BELOW THE MARRIAGEWALL FOR COLLUM SUPPORT PIERS. REFER TO TABLES 6b AND 6c IN THE INSTALLATION MANUAL FOR LOAD ON FRAME PIER FOOTINGS FOR HOMES THAT DO NOT REQUIRE PERIMETER BLOCKING. REFER TO TABLES 7b AND 7c IN THE INSTALLATION MANUAL FOR LOAD ON FRAME PIER FOOTINGS THAT REQUIRE PERIMETER BLOCKING. REFER TO TABLES 10 AND 10a TO DETERMINE FOOTING SIZE FOR ALL PIERS.
  - REFER TO TABLE 9 FOR PIER CONFIGURATION AND MAXIMUM ALLOWABLE HEIGHTS. CROSS REFERENCE THE PIER HEIGHT WITH THE MAXIMUM ALLOWABLE FLOOR HEIGHT LISTED IN THE FRAME TIEDOWN CHARTS (TABLE 18, 19, AND 20).
  - FLOOR WIDTH SHOWN IS FOR STANDARD PRODUCT ONLY. CONTACT THE MFG PLANT FOR SPECIFICATIONS OF OPTIONS ORDERED.
  - SERVICE DROP LOCATIONS IDENTIFIED ARE APPROXIMATE.
  - THE MAXIMUM SPACING FOR FRAME SUPPORT PIERS FOR 8" I-BEAMS IS 8 FEET, 10" & 12" I-BEAMS ARE 10 FEET.

1475 SQ.FT. (STD PLAN "CONDITIONED")  
SQ.FT. (W/OPT. PORCH/RECESS "CONDITIONED")

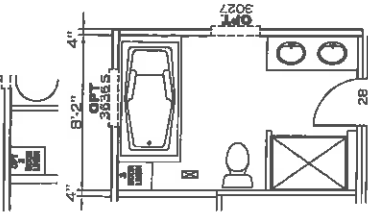
CMH MANUFACTURING	Model #: 5LT28564A Date: VA 3BM142	Drawing #:
Product Designer: JDC	26 x 56 Solution	

PIER LOADS

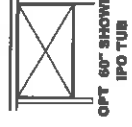
1/14/16 JDC



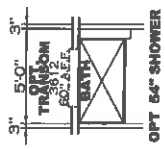
OPTION LINEN  
IPO SHELVES



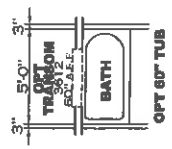
OPT 54" SHOWER  
IPO LINEN SHELVES  
at MARRIAGE WALL



OPT 60" SHOWER  
IPO TUB



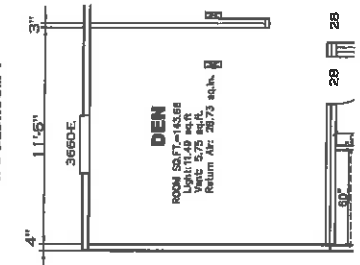
OPT 54" SHOWER



OPT 60" TUB

OPT S.G.D.

OPT DEN  
IPO BEDROOM 4



**BEDROOM 4**  
ROOM SQ.FT. = 106.00  
Light: 8.22 sq.ft.  
Vent: 4.22 sq.ft.  
Return Air: 21.12 sq.ft.

**BEDROOM 3**  
ROOM SQ.FT. = 118.59  
Light: 9.22 sq.ft.  
Vent: 4.88 sq.ft.  
Return Air: 25.31 sq.ft.

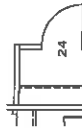
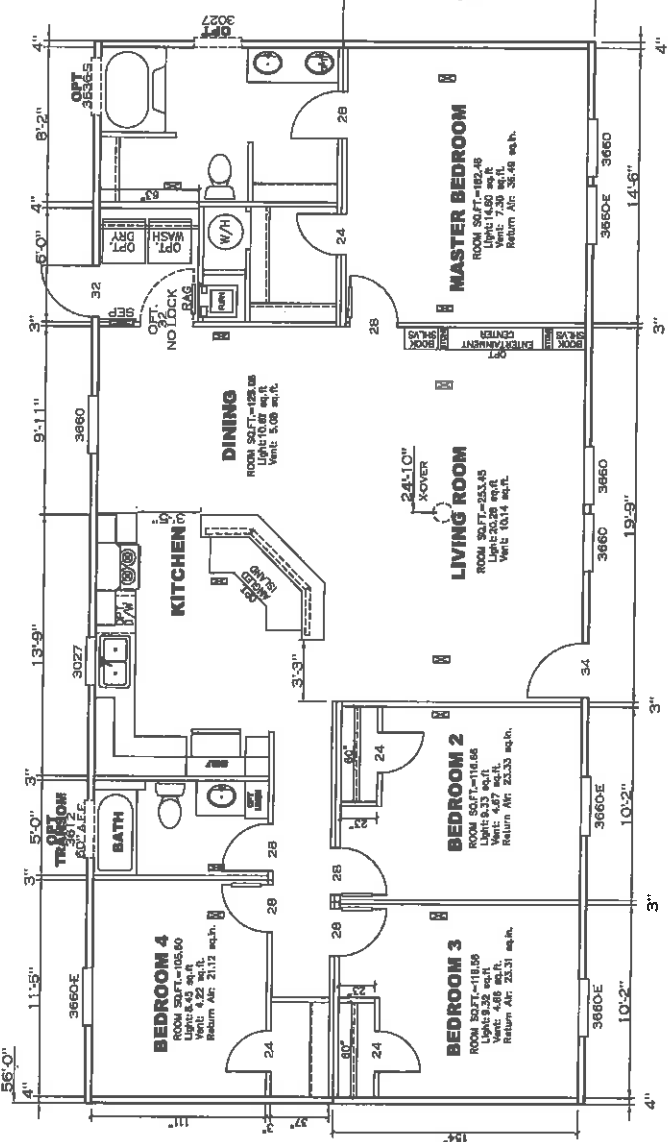
**BEDROOM 2**  
ROOM SQ.FT. = 116.68  
Light: 8.33 sq.ft.  
Vent: 4.33 sq.ft.  
Return Air: 25.33 sq.ft.

**LIVING ROOM**  
ROOM SQ.FT. = 253.45  
Light: 10.14 sq.ft.  
Vent: 10.14 sq.ft.

**DINING**  
ROOM SQ.FT. = 123.08  
Light: 10.67 sq.ft.  
Vent: 5.08 sq.ft.

**KITCHEN**

**MASTER BEDROOM**  
ROOM SQ.FT. = 182.48  
Light: 14.50 sq.ft.  
Vent: 7.30 sq.ft.  
Return Air: 38.08 sq.ft.



OPT CLOSET  
REPLACES STD BATH

**APPROVED**  
**REVISED**  
SEPT 29 2015  
FP-28-4552  
Federal Manufactured  
Home Construction  
And Safety Standards

**APPROVED**

1475 SQ.FT. (STD PLAN "CONDITIONED")  
SQ.FT. (W/OPT. PORCH/RECESS "CONDITIONED")

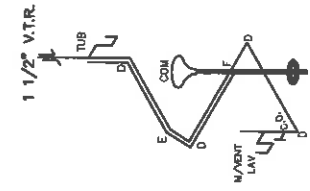
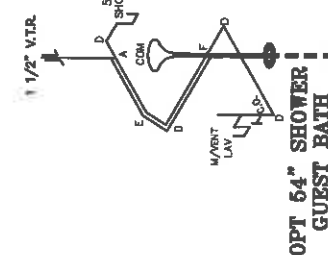
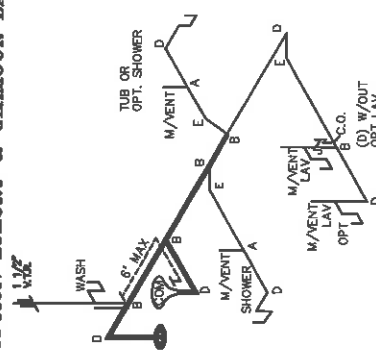
<b>CMH</b> FABRICATORS	Model No. 5172656-6A	Plan No. 30M142
Product Designer: JDC	28 x 56 Solution	

**FLOOR PLAN**

REVISION 30P-287061  
9/28/15 JDC

NOTE: WITH OPTION POOL, LOCATION,  
SLIDING GLASS DOORS IS REQUIRED IN  
DINING ROOM TO MEET 305" RULE.

**OPTION LUXURY & GLAMOUR BATHS**



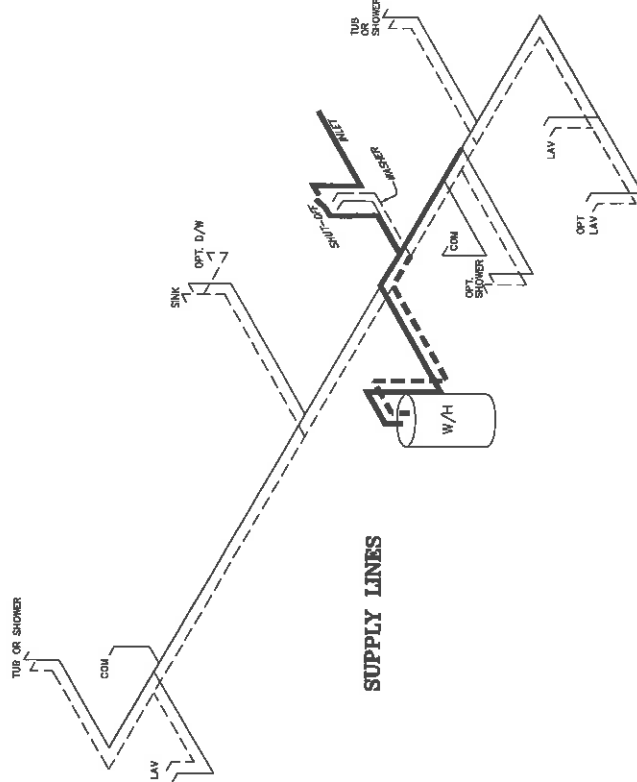
NOTE: SHOWER LINES INDICATE HOT WATER. SHOWER LINES INDICATE COLD WATER.

D.W.V. LINE SIZE CHART

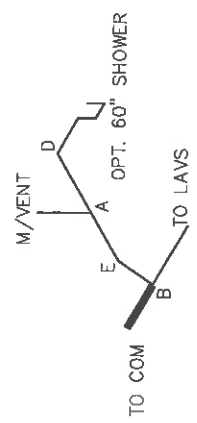
—	= 3"
—	= 2"
—	= 1 1/2"

LEGEND

A	SHORT TURN T-Y
B	LONG TURN T-Y
D	LONG SWEEP 1/4" BEND
E	45° ELL
F	90° SANITARY TEE
G	90° CLEAN ELB
H	90° ELB
I	45° Y
J	45° STREET ELBOW
K	45° TURN STREET ELBOW
L	90° TURN



**APPROVED**  
**REVISED**  
 SEPT 22 2015  
 FP-28-4552  
 Federal Manufacture  
 Home Construction  
 And Safety Standards



**OPT SHOWER/STD M-BATH**

1475 SQ.FT. (STD PLAN "CONDITIONED")  
 SQ.FT. (W/OPT. PORCH/RECESS "CONDITIONED")

<b>CMH</b>	Manufacturer	38M142
16000000000	Product No.	28 x 56 Solution
Project Designer: JCC	Project No.	16/16

**D.W.V. and Supply Lines**