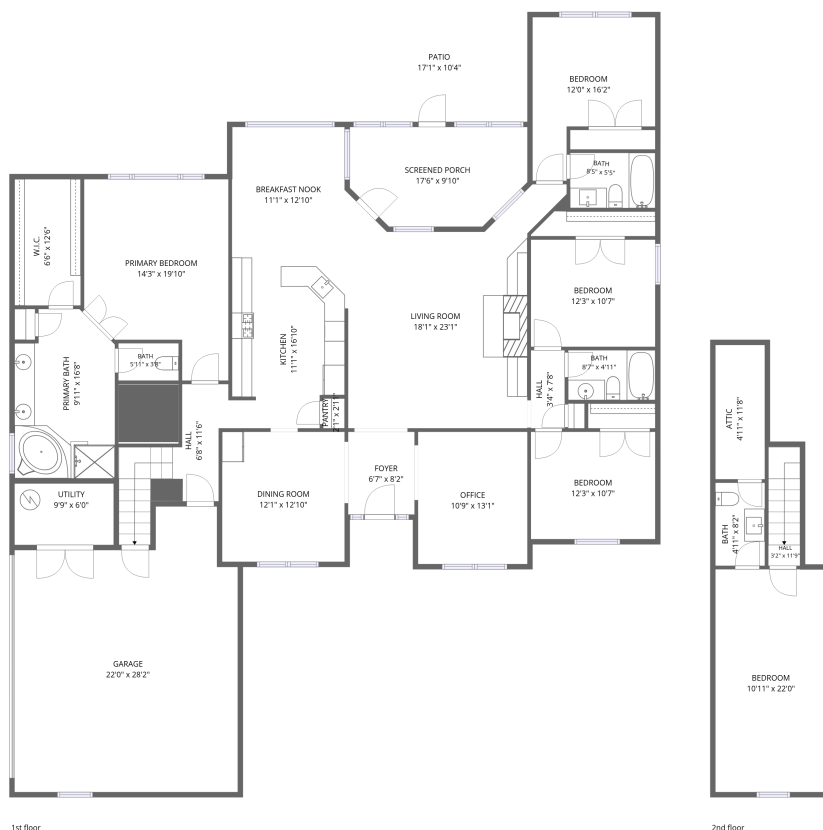


Home data report

9282 Sehoj Boulevard, Daphne, Baldwin County, Alabama,
United States, 36526



Total Area: 2690 sq. ft

1st Floor: 2365 sq. ft, 2nd Floor: 325 sq. ft

Excluded: Patio 177 sq. ft, Screened porch 155 sq. ft, Garage 548 sq. ft, Utility 59 sq. ft, Attic 57 sq. ft, Low ceiling 8 sq. ft, Walls: 241 sq. ft

Property summary



Home data report

**9282 Sehoj Boulevard, Daphne, Baldwin County, Alabama,
United States, 36526**



1
Half baths



1
Garages

Home data report

9282 Sehoj Boulevard, Daphne, Baldwin County, Alabama, United States, 36526



Room dimensions

Floor 1

Total:2365sqft Excluded: 939sqft

#		Dimensions	sqft	Counted as living area
1	Utility	9'9" x 6'0"	59 sq. ft	No
2	Dining Room	12'1" x 12'10"	155 sq. ft	Yes
3	Primary Bath	9'11" x 16'8"	151 sq. ft	Yes
4	Pantry	2'1" x 2'11"	6 sq. ft	Yes
5	Bath	5'11" x 3'8"	22 sq. ft	Yes
6	Bath	8'7" x 4'11"	42 sq. ft	Yes
7	Living Room	18'1" x 23'1"	374 sq. ft	Yes
8	Breakfast Nook	11'1" x 12'10"	143 sq. ft	Yes
9	Bedroom	12'3" x 10'7"	130 sq. ft	Yes
10	Kitchen	11'1" x 16'10"	179 sq. ft	Yes
11	W.I.C.	6'6" x 12'6"	81 sq. ft	Yes

Home data report

**9282 Sehoj Boulevard, Daphne, Baldwin County, Alabama,
United States, 36526**

#		Dimensions	sqft	Counted as living area
12	Primary Bedroom	14'3" x 19'10"	239 sq. ft	Yes
13	Garage	22'0" x 28'2"	548 sq. ft	No
14	Hall	6'8" x 11'6"	93 sq. ft	Yes
15	Bedroom	12'0" x 16'2"	149 sq. ft	Yes
16	Bath	8'5" x 5'5"	46 sq. ft	Yes
17	Office	10'9" x 13'1"	141 sq. ft	Yes
18	Hall	3'4" x 7'8"	26 sq. ft	Yes
19	Patio	17'1" x 10'4"	177 sq. ft	No
20	Bedroom	12'3" x 10'7"	130 sq. ft	Yes
21	Screened Porch	17'6" x 9'10"	155 sq. ft	No
22	Foyer	6'7" x 8'2"	54 sq. ft	Yes

Home data report

9282 Sehoj Boulevard, Daphne, Baldwin County, Alabama,
United States, 36526



Room dimensions

Floor 2

Total:325sqft Excluded: 65sqft

#		Dimensions	sqft	Counted as living area
23	Bedroom	10'11" x 22'0"	241 sq. ft	Yes
24	Bath	4'11" x 8'2"	40 sq. ft	Yes
25	Hall	3'2" x 11'9"	37 sq. ft	Yes
26	Attic	4'11" x 11'8"	57 sq. ft	No

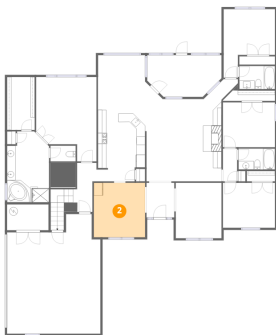
1 Floor 1 - Utility



Dimensions: 9'9" x 6'0"
Area: 59 sq. ft
Counted as living area: No

Heated: Yes
Finished: No
Enclosed: Yes
Contiguous: Yes
Permitted: Yes
Wet space: No
Addition: No
Conversion: No

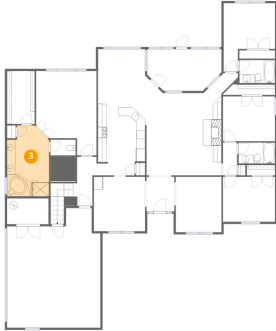
2 Floor 1 - Dining Room



Dimensions: 12'1" x 12'10"
Area: 155 sq. ft
Counted as living area: Yes

Heated: Yes
Finished: Yes
Enclosed: Yes
Contiguous: Yes
Permitted: Yes
Wet space: No
Addition: No
Conversion: No

3 Floor 1 - Primary Bath



Dimensions: 9'11" x 16'8"
Area: 151 sq. ft
Counted as living area: Yes

Heated: Yes
Finished: Yes
Enclosed: Yes
Contiguous: Yes
Permitted: Yes
Wet space: Yes
Addition: No
Conversion: No

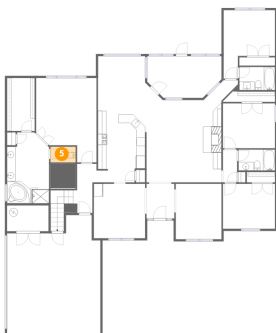
4 Floor 1 - Pantry



Dimensions: 2'1" x 2'11"
Area: 6 sq. ft
Counted as living area: Yes

Heated: Yes
Finished: Yes
Enclosed: Yes
Contiguous: Yes
Permitted: Yes
Wet space: No
Addition: No
Conversion: No

5 Floor 1 - Bath



Dimensions: 5'11" x 3'8"
Area: 22 sq. ft
Counted as living area: Yes

Heated: Yes
Finished: Yes
Enclosed: Yes
Contiguous: Yes
Permitted: Yes
Wet space: Yes
Addition: No
Conversion: No

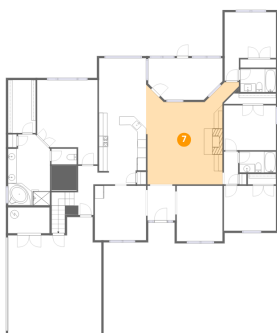
6 Floor 1 - Bath



Dimensions: 8'7" x 4'11"
Area: 42 sq. ft
Counted as living area: Yes

Heated: Yes
Finished: Yes
Enclosed: Yes
Contiguous: Yes
Permitted: Yes
Wet space: Yes
Addition: No
Conversion: No

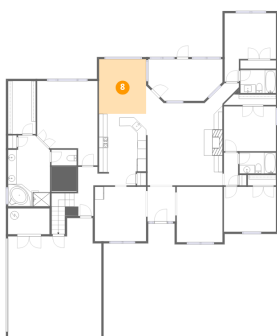
7 Floor 1 - Living Room



Dimensions: 18'1" x 23'1"
Area: 374 sq. ft
Counted as living area: Yes

Heated: Yes
Finished: Yes
Enclosed: Yes
Contiguous: Yes
Permitted: Yes
Wet space: No
Addition: No
Conversion: No

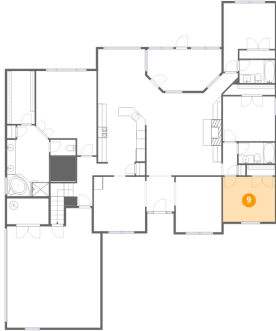
8 Floor 1 - Breakfast Nook



Dimensions: 11'1" x 12'10"
Area: 143 sq. ft
Counted as living area: Yes

Heated: Yes
Finished: Yes
Enclosed: Yes
Contiguous: Yes
Permitted: Yes
Wet space: No
Addition: No
Conversion: No

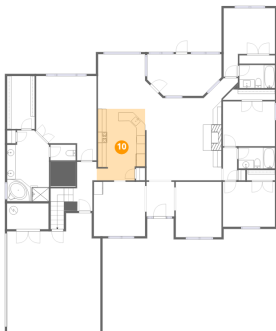
9 Floor 1 - Bedroom



Dimensions: 12'3" x 10'7"
Area: 130 sq. ft
Counted as living area: Yes

Heated: Yes
Finished: Yes
Enclosed: Yes
Contiguous: Yes
Permitted: Yes
Wet space: No
Addition: No
Conversion: No

10 Floor 1 - Kitchen



Dimensions: 11'1" x 16'10"
Area: 179 sq. ft
Counted as living area: Yes

Heated: Yes
Finished: Yes
Enclosed: Yes
Contiguous: Yes
Permitted: Yes
Wet space: No
Addition: No
Conversion: No

11 Floor 1 - W.I.C.



Dimensions: 6'6" x 12'6"
Area: 81 sq. ft
Counted as living area: Yes

Heated: Yes
Finished: Yes
Enclosed: Yes
Contiguous: Yes
Permitted: Yes
Wet space: No
Addition: No
Conversion: No

12 Floor 1 - Primary Bedroom



Dimensions: 14'3" x 19'10"
Area: 239 sq. ft
Counted as living area: Yes

Heated: Yes
Finished: Yes
Enclosed: Yes
Contiguous: Yes
Permitted: Yes
Wet space: No
Addition: No
Conversion: No

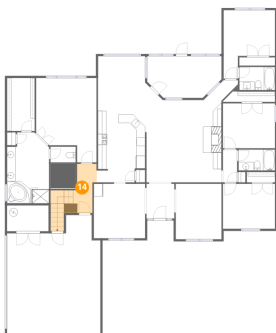
13 Floor 1 - Garage



Dimensions: 22'0" x 28'2"
Area: 548 sq. ft
Counted as living area: No

Heated: No
Finished: No
Enclosed: Yes
Contiguous: Yes
Permitted: Yes
Wet space: No
Addition: No
Conversion: No

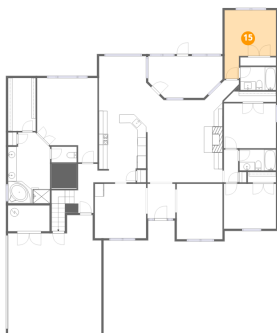
14 Floor 1 - Hall



Dimensions: 6'8" x 11'6"
Area: 93 sq. ft
Counted as living area: Yes

Heated: Yes
Finished: Yes
Enclosed: Yes
Contiguous: Yes
Permitted: Yes
Wet space: No
Addition: No
Conversion: No

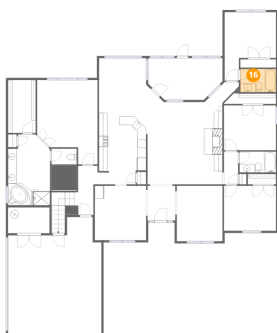
15 Floor 1 - Bedroom



Dimensions: 12'0" x 16'2"
Area: 149 sq. ft
Counted as living area: Yes

Heated: Yes
Finished: Yes
Enclosed: Yes
Contiguous: Yes
Permitted: Yes
Wet space: No
Addition: No
Conversion: No

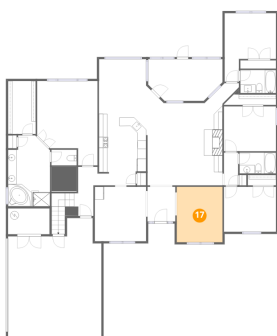
16 Floor 1 - Bath



Dimensions: 8'5" x 5'5"
Area: 46 sq. ft
Counted as living area: Yes

Heated: Yes
Finished: Yes
Enclosed: Yes
Contiguous: Yes
Permitted: Yes
Wet space: Yes
Addition: No
Conversion: No

17 Floor 1 - Office



Dimensions: 10'9" x 13'1"
Area: 141 sq. ft
Counted as living area: Yes

Heated: Yes
Finished: Yes
Enclosed: Yes
Contiguous: Yes
Permitted: Yes
Wet space: No
Addition: No
Conversion: No

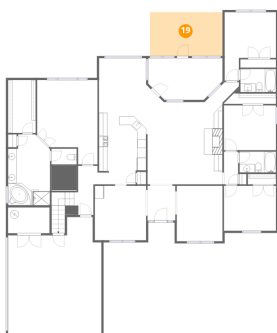
18 Floor 1 - Hall



Dimensions: 3'4" x 7'8"
Area: 26 sq. ft
Counted as living area: Yes

Heated: Yes
Finished: Yes
Enclosed: Yes
Contiguous: Yes
Permitted: Yes
Wet space: No
Addition: No
Conversion: No

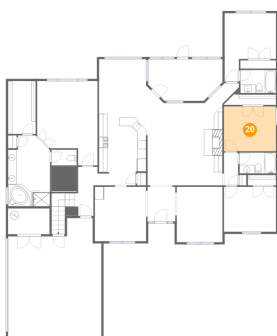
19 Floor 1 - Patio



Dimensions: 17'1" x 10'4"
Area: 177 sq. ft
Counted as living area: No

Heated: No
Finished: No
Enclosed: No
Contiguous: Yes
Permitted: Yes
Wet space: No
Addition: No
Conversion: No

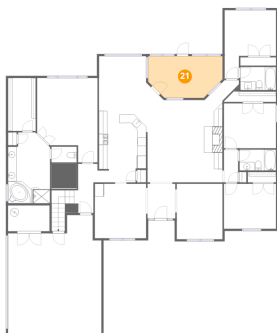
20 Floor 1 - Bedroom



Dimensions: 12'3" x 10'7"
Area: 130 sq. ft
Counted as living area: Yes

Heated: Yes
Finished: Yes
Enclosed: Yes
Contiguous: Yes
Permitted: Yes
Wet space: No
Addition: No
Conversion: No

21 Floor 1 - Screened Porch



Dimensions: 17'6" x 9'10"
Area: 155 sq. ft
Counted as living area: No

Heated: No
Finished: No
Enclosed: No
Contiguous: Yes
Permitted: Yes
Wet space: No
Addition: No
Conversion: No

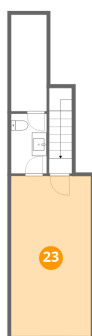
22 Floor 1 - Foyer



Dimensions: 6'7" x 8'2"
Area: 54 sq. ft
Counted as living area: Yes

Heated: Yes
Finished: Yes
Enclosed: Yes
Contiguous: Yes
Permitted: Yes
Wet space: No
Addition: No
Conversion: No

23 Floor 2 - Bedroom



Dimensions: 10'11" x 22'0"
Area: 241 sq. ft
Counted as living area: Yes

Heated: Yes
Finished: Yes
Enclosed: Yes
Contiguous: Yes
Permitted: Yes
Wet space: No
Addition: No
Conversion: No

9282 Sehoj Boulevard, Daphne, Baldwin County, Alabama,
United States, 36526

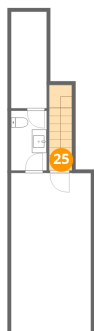
24 Floor 2 - Bath



Dimensions: 4'11" x 8'2"
Area: 40 sq. ft
Counted as living area: Yes

Heated: Yes
Finished: Yes
Enclosed: Yes
Contiguous: Yes
Permitted: Yes
Wet space: Yes
Addition: No
Conversion: No

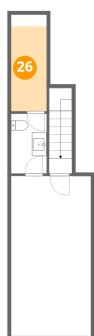
25 Floor 2 - Hall



Dimensions: 3'2" x 11'9"
Area: 37 sq. ft
Counted as living area: Yes

Heated: Yes
Finished: Yes
Enclosed: Yes
Contiguous: Yes
Permitted: Yes
Wet space: No
Addition: No
Conversion: No

26 Floor 2 - Attic



Dimensions: 4'11" x 11'8"
Area: 57 sq. ft
Counted as living area: No

Heated: No
Finished: No
Enclosed: Yes
Contiguous: Yes
Permitted: Yes
Wet space: No
Addition: No
Conversion: No