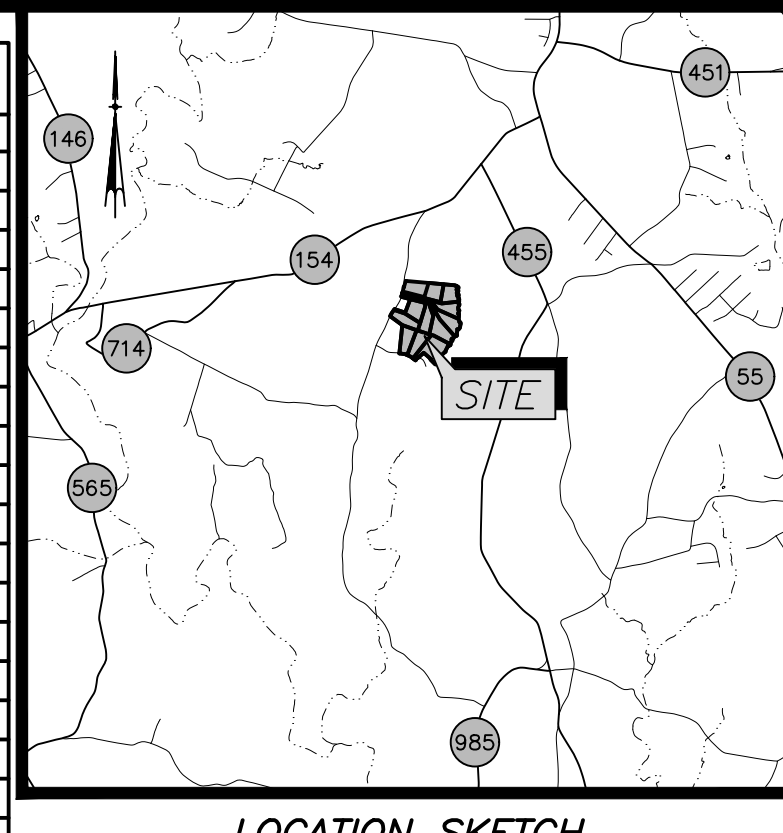


TRACT "1" 5.07 ACRES			TRACT "3" 5.50 ACRES			TRACT "4" 5.13 ACRES			TRACT "5" 6.20 ACRES			TRACT "6" 7.56 ACRES			TRACT "12" 8.51 ACRES		
PT-PT	BEARING	DISTANCE	PT-PT	BEARING	DISTANCE	PT-PT	BEARING	DISTANCE	PT-PT	BEARING	DISTANCE	PT-PT	BEARING	DISTANCE	PT-PT	BEARING	DISTANCE
415-512	S 84°51'19" E	632.84'	505-555	S 75°29'59" E	33.00'	1105-1104	N 55°12'27" E	7.29'	503-504	N 15°30'16" E	25.00'	503-557	S 75°33'11" E	33.00'	501-3008	N 19°15'27" E	6.49'
512-514	S 16°52'30" W	408.80'	555-517	S 75°29'59" E	1,045.70'	1104-1103	N 16°17'44" E	15.82'	504-556	S 75°29'14" E	33.00'	557-523	S 75°33'11" E	807.61'	3008-502	N 15°30'16" E	18.53'
514-554	S 75°29'56" W	579.20'	517-511	N 10°07'22" E	502.69'	1103-1102	S 79°27'47" E	24.96'	556-520	S 75°29'14" E	1,087.90'	523-524	S 37°45'03" E	268.49'	502-558	S 75°29'44" E	35.04'
554-506	N 75°29'56" W	33.00'	511-3037	S 84°51'19" E	288.94'	1102-1101	S 10°04'09" E	13.05'	520-553	N 83°12'47" E	404.65'	524-552	S 65°55'54" E	600.63'	558-527	S 75°29'58" E	759.40'
506-3006	N 11°04'03" E	63.81'	3037-3	S 84°51'19" E	25.15'	1101-1100	S 13°57'43" W	17.48'	553-1086	N 83°12'47" E	25.00'	527-528	S 75°29'58" E	550.93'	527-528	S 75°29'58" E	550.93'
3006-3005	N 08°10'50" E	55.59'	31-123	S 15°42'35" W	4.54'	1100-1099	S 50°38'54" W	36.21'	1086-1085	S 65°16'06" E	18.01'	1066-1065	S 21°46'24" E	48.37'	528-551	S 41°32'29" E	569.89'
3005-14	N 10°29'16" E	5.52'	1123-1122	S 64°24'10" E	40.94'	1099-1098	S 01°12'03" E	20.19'	1085-1084	S 08°37'34" W	18.84'	1065-1064	S 09°50'11" E	46.89'	551-1048	S 64°42'44" E	25.00'
14-3058	S 38°46'07" E	13.64'	1122-1121	S 16°06'18" E	23.23'	1098-1097	S 33°34'11" E	13.30'	1084-1082	S 52°53'32" E	23.19'	1064-1063	S 87°17'49" E	26.94'	1048-1047	S 19°32'35" W	28.16'
3058-415	N 15°44'45" E	189.31'	1121-1120	N 67°41'15" E	33.15'	1097-1096	N 85°48'29" E	14.87'	1082-1081	S 75°54'51" E	23.52'	1063-1062	S 19°16'36" E	39.21'	1047-1043	S 13°12'58" W	36.61'
			1119-1118	S 39°58'50" E	36.77'	1096-1095	N 11°51'17" E	27.38'	1081-1080	S 13°51'50" E	17.78'	1062-1061	S 17°40'11" W	24.87'	1043-1042	S 72°57'28" W	46.56'
			1118-1117	S 29°59'21" W	20.18'	1095-1094	N 64°24'00" E	19.33'	1080-1079	S 03°15'09" W	32.47'	1061-1060	S 08°43'15" W	28.74'	1042-1041	S 38°11'19" W	28.31'
			1117-1116	S 07°12'57" W	28.04'	1094-1093	S 09°31'28" W	87.47'	1079-1078	S 30°18'00" W	49.66'	1060-1059	S 08°49'40" W	57.03'	1041-1040	S 64°42'44" E	33.76'
			1116-1115	N 07°12'57" W	28.04'	1093-1092	S 47°54'35" E	33.59'	1078-1077	S 17°19'29" W	33.93'	1059-1058	S 29°10'17" W	45.96'	1040-1039	S 02°30'07" W	17.64'
			1115-1114	N 49°11'48" W	29.56'	1092-1091	S 05°59'22" E	38.99'	1077-1076	S 18°01'17" E	26.05'	1058-1057	S 70°03'54" W	39.82'	1039-1038	S 35°15'12" W	24.40'
			1114-1113	S 54°15'02" W	30.32'	1091-1090	S 57°55'44" W	22.54'	1076-1075	S 04°56'54" W	30.93'	1057-1056	N 75°07'34" W	22.17'	1038-1037	S 70°15'11" W	16.85'
			1113-1112	S 14°42'52" E	21.53'	1090-1089	S 40°27'31" E	26.97'	1075-1074	S 70°36'51" W	30.65'	1056-1055	S 19°32'39" W	30.72'	1037-1036	S 34°10'05" W	44.08'
			1112-1111	S 47°08'26" E	21.56'	1089-1088	S 22°46'36" W	14.36'	1074-1073	S 09°19'57" W	23.54'	1055-1054	S 15°58'20" W	25.44'	1036-1035	S 05°19'43" E	35.02'
			1111-1110	S 83°51'46" E	28.11'	1088-1087	N 25°06'21" W	35.17'	1073-1072	S 28°27'44" W	31.77'	1054-1053	S 13°59'04" W	37.75'	1035-1034	S 12°09'58" W	10.06'
			1110-1109	S 08°49'22" E	11.01'	1087-1086	S 27°22'27" W	11.87'	1072-1071	S 26°14'23" W	32.58'	1053-1052	S 14°52'38" W	42.41'	1034-1033	N 62°25'04" W	25.00'
			1109-1108	S 65°11'46" W	21.23'	1086-553	S 83°12'47" W	25.00'	1071-1070	S 01°34'22" E	22.55'	1052-1051	S 04°39'13" E	35.36'	1033-1032	S 72°57'28" W	46.56'
			1108-1107	S 13°34'45" W	19.72'	553-520	S 83°12'47" W	404.65'	1070-1069	S 75°25'37" E	24.13'	1051-1050	S 42°33'42" W	27.83'	1032-1031	S 39°21'20" W	22.60'
			1107-1106	S 82°34'30" W	18.18'	520-556	N 75°29'14" W	1,087.90'	1069-1068	S 01°24'38" W	48.05'	1050-1049	S 81°06'12" W	31.80'	1031-1030	S 75°14'29" W	16.38'
			1106-1105	S 04°16'40" W	29.71'	556-504	N 75°29'14" W	33.00'	1068-1067	S 03°21'41" W	30.74'	1049-1048	N 66°25'44" W	29.53'	1030-1029	S 00°57'11" W	33.80'
						504-505	N 15°30'16" E	25.00'	1067-1066	S 15°21'27" W	48.56'	1048-551	N 41°32'29" W	25.00'	1029-1028	S 76°50'40" W	26.76'
									1066-524	N 65°55'54" E	626.63'	551-528	N 41°32'29" W	569.89'	1028-1027	S 13°44'05" W	26.74'
									524-523	N 37°45'03" W	268.49'	528-527	N 30°27'01" W	550.93'	1027-1026	S 32°40'10" W	42.86'
									523-557	N 75°33'11" W	807.61'	527-558	N 75°29'58" W	759.40'	1026-1025	S 20°24'49" W	34.40'
									557-503	N 75°33'11" W	33.00'	526-502	N 15°30'15" E	25.00'	1025-1024	S 28°57'20" W	33.68'
												525-502	N 15°30'15" E	25.00'	1024-1023	S 01°47'11" W	31.15'
												524-502	N 15°30'15" E	25.00'	1023-1022	S 58°11'33" W	43.27'
												523-502	N 15°30'15" E	25.00'	1022-1021	S 48°20'41" W	52.34'
												522-502	N 15°30'15" E	25.00'	1021-1020	S 40°26'06" W	37.30'
												521-502	N 15°30'15" E	25.00'	1020-1017	S 29°39'36" W	40.10'
												520-502	N 15°30'15" E	25.00'	1017-1016	S 39°21'20" W	22.60'
												519-502	N 15°30'15" E	25.00'	1016-1015	N 74°19'14" W	21.40'
												518-502	N 15°30'15" E	25.00'	1015-1014	S 27°26'37" W	47.98'
												517-502	N 15°30'15" E	25.00'	1014-1013	S 81°19'31" W	37.85'
												516-502	N 15°30'15" E	25.00'	1013-1012	S 05°11'53" E	11.81'
												515-502	N 15°30'15" E	25.00'	1012-1011	S 50°27'32" E	20.97'
												514-502	N 15°30'15" E	25.00'	1011-1010	S 19°05'42" W	22.65'
												513-502	N 15°30'15" E	25.00'	1010-1009	S 29°43'52" E	26.39'
												512-502	N 15°30'15" E	25.00'	1009-1008	S 46°01'40" W	28.13'
												511-502	N 15°30'15" E	25.00'	1008-1007	N 73°17'46" W	28.17'
												510-502	N 15°30'15" E	25.00'	1007-1006	S 78°20'57" W	23.89'
												509-502	N 15°30'15" E	25.00'	1006-1005	S 18°22'59" W	31.98'
												508-502	N 15°30'15" E	25.00'	1005-1004	S 18°39'53" E	34.84'
												507-502	N 15°30'15" E	25.00'	1004-12	S 54°58'59" W	26.81'
												506-502	N 15°30'15" E	25.00'	12-1141	N 45°13'16" W	8.88'
												505-502	N 15°30'15" E	25.00'	1141-106	N 45°13'09" W	169.34'
												504-502	N 15°30'15" E	25.00'	106-13	N 45°13'09" W	6.84'
												503-502	N 15°30'15" E	25.00'	13-19	N 66°35'35" E	17.34'
												502-502	N 15°30'15" E	25.00'	19-18	N 48°29'25" W	275.00'
												501-502	N 15°30'15" E	25.00'	18-3087	S 46°43'54" W	175.02'
												500-502	N 15°30'15" E	25.00'	3087-15	S 46°43'54" W	27.30'
												499-502	N 15°30'15" E	25.00'	15-1133	N 70°56'00" W	14.05'
												498-502	N 15°30'15" E	25.00'	1133-1132	S 50°07'54" W	88.92'
												497-502	N 15°30'15" E	25.00'	1132-16	S 44°37'48" W	17.66'
												496-502	N 15°30'15" E	25.00'	16-1131	S 46°43'54" W	8.55'
												495-502	N 15°30'15" E	25.00'	1131-509	N 53°27'42" W	88.84'



GEODETIC AND SC STATE GRID POINT DATA

HORIZONTAL DATUM: NAD83 (2011)
 VERTICAL DATUM: NAVD83

POINT NUMBER: 415
 SC GRID COORDINATES:
 NORTH: 1,019,142.65'
 EAST: 1,617,625.15'
 GEODETIC COORDINATES:
 LATITUDE: N 034°37'40.4664"
 LONGITUDE: W 082°16'15.9338"

POINT NUMBER: 507
 SC GRID COORDINATES:
 NORTH: 1,018,344.42'
 EAST: 1,617,307.40'
 GEODETIC COORDINATES:
 LATITUDE: N 034°37'32.5323"
 LONGITUDE: W 082°16'19.6184"

POINT NUMBER: 509
 SC GRID COORDINATES:
 NORTH: 1,017,909.93'
 EAST: 1,617,824.12'
 GEODETIC COORDINATES:
 LATITUDE: N 034°37'19.3954"
 LONGITUDE: W 082°16'22.5392"

COORDINATE DERIVATION: GNSS
 COMBINED REDUCTION FACTOR: 0.99991252
 MEASUREMENTS SHOWN ARE FIELD SURVEY DISTANCES.
 NOTE: THIS DATA TO BE USED FOR LOCATION ONLY.

TRACT "2" 5.08 ACRES

PT-PT	BEARING	DISTANCE
505-3007	N 15°30'15" E	15.91'
3007-506	N 11°04'03" E	9.11'
506-554	S 75°29	